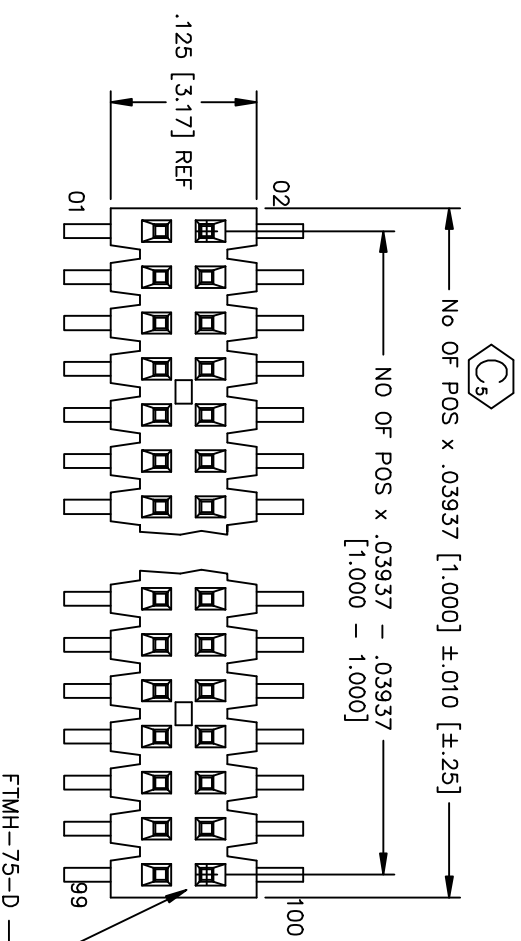
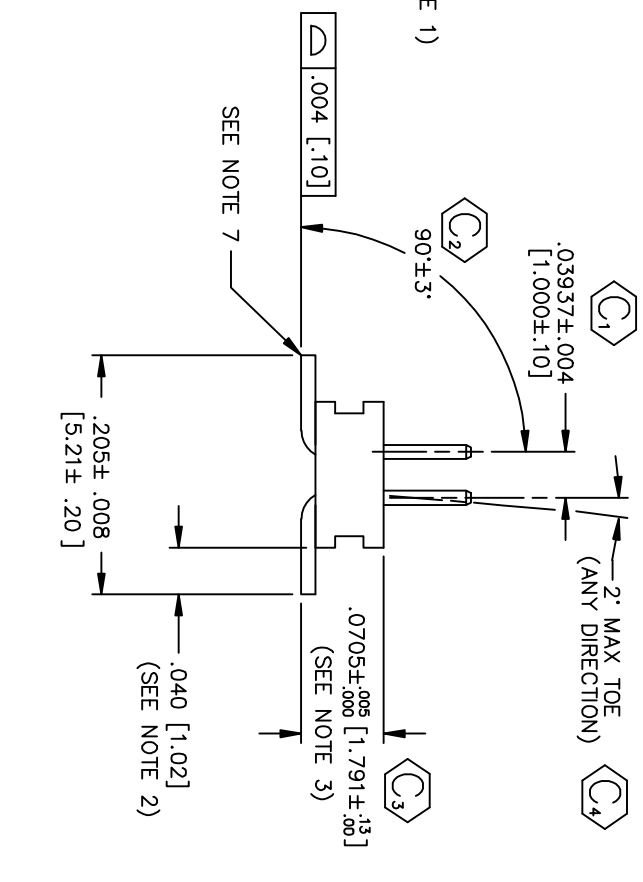
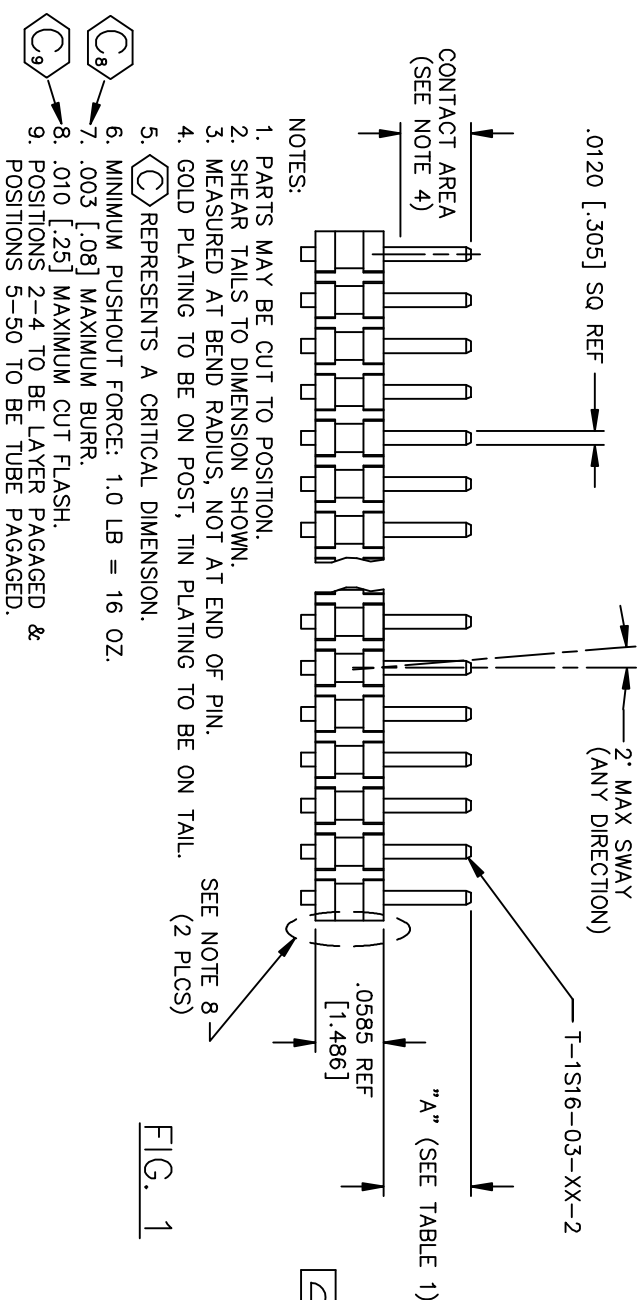


TABLE 1
"A"

LEAD STYLE	"A"
-02	.075 [1.91]
-03	.065 [1.65]



- FTMH-1XX-XX-XX-DV-XX
- No OF POS PER ROW -02 THRU -50
- LEAD STYLE
- 02: .075 [1.91] (USE T-1S16-03-XX-2)
 - 03: .065 [1.65] MIN (USE T-1S16-03-XX-2)
- PLATING
- L: LIGHT SELECTIVE (USE T-1S16-03-L-2)
 - F: FLASH SELECTIVE (USE T-1S16-03-F-2)
 - H: HEAVY GOLD (USE T-1S16-03-H-2)
 - LM: LIGHT SELECTIVE GOLD, MATTE TIN TAIL (USE T-1S16-03-L-2)
 - FM: FLASH SELECTIVE GOLD, MATTE TIN TAIL (USE T-1S16-03-F-2)
 - G: GOLD (USE T-1S16-03-G-2)
- ROW SPECIFICATION
- DV: DOUBLE ROW VERTICAL (USE FTMH-75-D)
- OPTIONS
- P: PICK & PLACE PAD (USE PPP-30) (USE PPP-30-NT FOR TAPE & REEL) (SEE FIG. 3, SHT 3)
 - (6 POS. PER ROW MIN)
 - TR: TAPE & REEL PACKAGING (SEE FIG. 2, SHT 2) (9 POS. PER ROW MIN)
 - ES: SNAP ON END SHRROUDS (SEE FIG. 2, SHT 2) (9 POS. PER ROW MIN)
 - MOULDED TO POSITION END SHRROUDS. (5 POS. PER ROW MIN) (SEE FIG. 2 SHT.2)
 - EP: GUIDE POST (SEE FIG. 4, SHT.3) (9 POS. PER ROW MIN) (USE ONLY WHEN MATING WITH A CLM)
 - EC: LOCKING CLIP (SEE FIG. 5, SHT. 3) (9 POS. PER ROW MIN)
 - A: ALIGNMENT PIN (SEE FIG. 6 & 7, SHT 4) MOULDED TO POSITION (3 POSITIONS PER ROW MIN.) MOULDED TO POSITION WITH END SHRROUDS (5 POS. PER ROW MIN)
- (SAMTEC DISCRETION ON WHICH -A PIN IS USED) (MOLD 3 POSITION MIN, USE FTMH-75-D-XX) (STAKE 7 POSITION MIN, USE FTMH-60-D)



- NOTES:
- PARTS MAY BE CUT TO POSITION.
 - SHEAR TAILS TO DIMENSION SHOWN.
 - MEASURED AT BEND RADIUS, NOT AT END OF PIN.
 - GOLD PLATING TO BE ON POST, TIN PLATING TO BE ON TAIL. SEE NOTE 8 - (2 PLCS)
 - ☐ REPRESENTS A CRITICAL DIMENSION.
 - MINIMUM PUSHOUT FORCE: 1.0 LB = 16 OZ.
 - .003 [.08] MAXIMUM BURR.
 - .010 [.25] MAXIMUM CUT FLASH.
 - POSITIONS 2-4 TO BE LAYER PAGAGED &
 - POSITIONS 5-50 TO BE TUBE PAGAGED.

FIG. 1

TABLE 2: *SEE NOTE 9 FOR PACKAGING NOTES*

LEAD STYLE	OPTION (S)	PACKAGING TUBE	TUBE PLUG
-02	-NONE	PT-1-24-02-49	TP-12 (2 REQ'D)
-02, -03	-A	PT-1-24-01-60	TP-03 (2 REQ'D)
-02, -03	-P, -A-P	PT-1-24-01-43	TP-24 (2 REQ'D)
-03	NONE	PT-1-24-02-49	TP-30 (2 REQ'D)
-02, -03	-ES, -ES-P, -ES-A, -EP	PT-1-24-01-63	TP-24-02 (2 REQ'D)
-02, -03	-EC	PT-1-24-01-60	TP-09 (2 REQ'D)
-02, -03	-EP-A, -EP-A-P	PT-1-24-02-15	TP-03 (2 REQ'D)

DO NOT SCALE

PROPRIETARY NOTE
 THIS DOCUMENT CONTAINS INFORMATION
 THAT IS THE PROPERTY OF SAMTEC INC.
 AND SHALL NOT BE REPRODUCED,
 COPIED, OR TRANSMITTED IN ANY
 FORM OR BY ANY MEANS, WITHOUT THE
 WRITTEN CONSENT OF SAMTEC INC.

MATERIAL:
INSULATOR:
BLACK LIQUID CRYSTAL POLYMER

TERMINAL:
PHOSPHOR BRONZE

MADE BY: PURVIS 04-22-96

520 PARK EAST BLVD. NEW ALBANY, INDIANA 47150
 PHONE (812) 944-6733 P.O. BOX 1147
 CODE 55322

samtec MISC/MKTG
FTMHSK1T

FTMH-1XX-XX-DV-XX
 Sheet 1 of 3