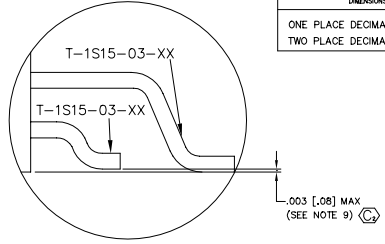


REVISION AX

DO NOT SCALE FROM THIS PRINT

TABLE 1	
LEAD STYLE	"A"
-01	.120 [3.05]
-02	.075 [1.91]
-04	.150 [3.81]



DIMENSIONS ARE IN INCHES UNLESS OTHERWISE NOTED		TOLERANCES ARE:	TITLE:	DWG NO:
ONE PLACE DECIMALS ± .1[2.54]	THREE PLACE DECIMALS ± .005[.13]	ANGLES ± 1°	.050 x .050 C.L. DOUBLE HORIZONTAL TERMINAL STRIP	FTSH-1XX-XX-XXX-DH-XX
TWO PLACE DECIMALS ± .01[.25]	FOUR PLACE DECIMALS ± .0010[.025]			SHEET 1 OF 2

- FTSH-1XX-XX-XXX-DH-XX
- No. OF POSITIONS -02 THRU -50 (PER ROW)
  - LEAD STYLE
    - 01: .120 [3.05] (USE T-1S15-03-XX)
    - 02: .075 [1.91] (USE T-1S15-03-XX)
    - 04: .150 [3.81] (USE T-1S15-03-XX)
  - PLATING
    - L: LIGHT SELECTIVE (USE T-1S15-XX-L)
    - F: FLASH SELECTIVE (USE T-1S15-XX-F)
    - S: SELECTIVE GOLD (USE T-1S15-XX-S)
    - H: HEAVY SELECTIVE (USE T-1S15-XX-H)
    - LM: LIGHT SELECTIVE MATTE (USE T-1S15-XX-L)
    - FM: FLASH SELECTIVE MATTE (USE T-1S15-XX-F)
    - SM: SELECTIVE GOLD MATTE (USE T-1S15-XX-S)
    - LTL: LIGHT SELECTIVE TIN/LEAD (USE T-1S15-XX-LTL)
  - OPTIONS
    - TR: TAPE AND REEL
    - A: ALIGNMENT PIN (SEE FIG. 3 & 4, SHT. 2) (USE FTSH-XX-DH-XXX-AXX) (MOLDED TO POSITION OR STAKED) (SAMTEC DISCRETION WHICH -A PIN IS USED) (STAKED 8 POSITION MIN. SEE FIG. 3, SHT. 2) (MOLDED 5 POSITION MIN. SEE FIG. 4, SHT. 2)
    - C: POLYIMIDE FILM (SEE FIG. 5, SHT. 2)
  - TAIL OPTION
    - DH: DOUBLE HORIZONTAL (USE FTSH-XX-DH)

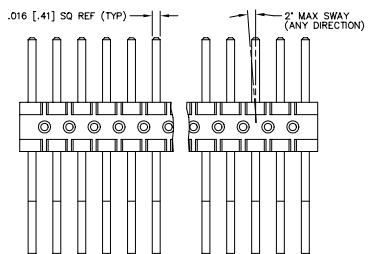
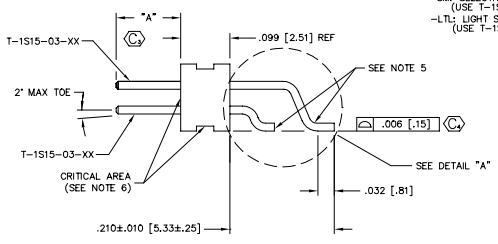
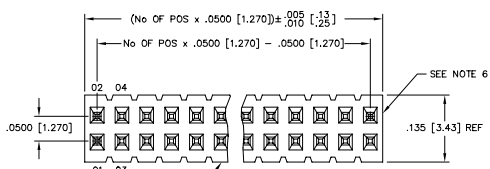
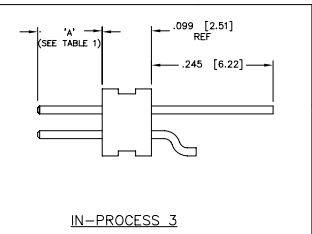
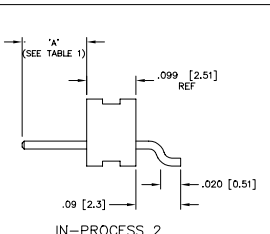
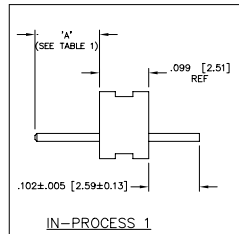


TABLE 3	
No. OF POS. PER FINISHED ASSM	No. OF FINISHED ASSEMBLIES PER FULL STRIP
4 - 5	10
6 - 10	5
11 - 16	3
17 - 25	2
26 - 50	1

FIG 1

PATENT NUMBERS  
5713755 / 5961339

- NOTES:
1. (C) REPRESENTS A CRITICAL DIMENSION
  2. NOTE 2 DELETED.
  3. NOTE 3 DELETED.
  4. MINIMUM PUSH OUT FORCE: .5 LB.
  5. .002 MAX BURR ALLOWED.
  6. .010 MAX CUT FLASH ALLOWED IN NON-CRITICAL AREA, NO CUT FLASH ALLOWED IN CRITICAL AREAS AS SHOWN.
  7. NOTE DELETED.
  8. MAX HEIGHT VARIATION .005 [.13] BETWEEN ROWS.
  9. PIN 1 AND 2 TO BE FLUSH TO .0030 [.076] ABOVE BODY.



PROPRIETARY NOTE  
THIS DOCUMENT CONTAINS INFORMATION WHICH IS THE PROPERTY OF SAMTEC. IT IS TO BE USED ONLY FOR THE PURPOSES OF ORDERING THIS PRODUCT. IT IS NOT TO BE REPRODUCED OR TRANSMITTED IN ANY FORM OR BY ANY MEANS, ELECTRONIC OR MECHANICAL, INCLUDING PHOTOCOPYING, RECORDING, OR BY ANY INFORMATION STORAGE AND RETRIEVAL SYSTEM, WITHOUT THE WRITTEN PERMISSION OF SAMTEC.

MATERIAL:  
INSULATOR:  
BLACK LIQUID CRYSTAL POLYMER,  
30% GLASS FILLED

TERMINAL:  
PHOSPHOR BRONZE, ALLOY  
NO. 510, GRADE A, FED. SPEC.  
QQ-B-750, SPRING TEMPER

520 PARK EAST BLVD. NEW ALBANY, INDIANA 47150  
PHONE (812) 944-6733 P.O. BOX 1147  
CODE 55322

MADE BY: BRATCHER 1-4-95

FTSH-1XX-XX-XXX-DH-XX  
SHEET 1 OF 2