

REV. DJ

FIG. 2
(DIFFERENT AS SHOWN, OTHERWISE SAME AS FIG. 1)
(USE -02 OR -03 LEAD STYLE ONLY)
(9 POS. MIN. FOR SNAP SHROUDS)
(5 POS. MIN. FOR MOLDED SHROUDS)
-ES OPTION

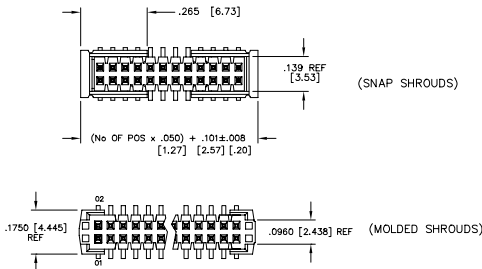


TABLE 5		
OPTION	PAD	MIN. POS
NONE, -A	PPP-25 **	4
E,J,EJC,EJM	PPP-41	10
ES,EC,EP,EL	PPP-25 **	9
EPC	PPP-25 **	5 *
K, K-EJ	PPP-48	SEE FIG 10

* MOLDED SHROUD ONLY
** USE PPP-25-NT WITH -TR PACKAGING ONLY

FIG. 5
-P OPTION
(DIFFERENT AS SHOWN, OTHERWISE SAME AS FIG. 1)

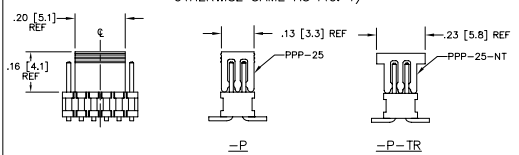


FIG. 16
-EJ OPTION (SHROUDS OPEN)
(DIFFERENT AS SHOWN, OTHERWISE SAME AS FIG. 1 AND FIG. 8)
(-01 LEAD STYLE ONLY)

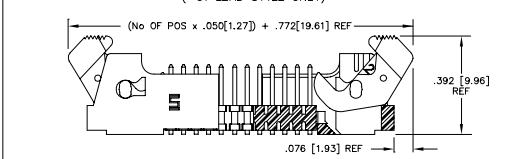


FIG. 8
(DIFFERENT AS SHOWN, OTHERWISE SAME AS FIG. 1)
(-01 LEAD STYLE ONLY)

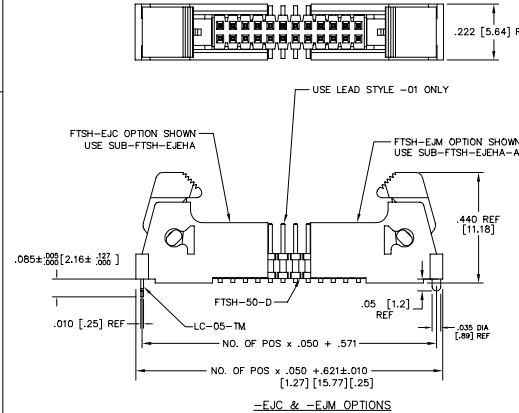
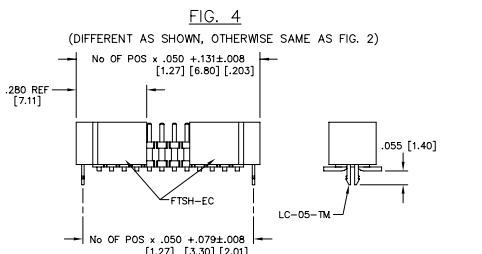


FIG. 4
(DIFFERENT AS SHOWN, OTHERWISE SAME AS FIG. 2)
(USE -02 OR -03 LEAD STYLE ONLY)
(9 POS. MIN. FOR SNAP SHROUDS)
(5 POS. MIN. FOR MOLDED SHROUDS)
-EC OPTION



PROPRIETARY NOTE
THIS DOCUMENT CONTAINS PROPRIETARY INFORMATION OF SAMTEC. IT IS THE PROPERTY OF SAMTEC AND IS TO BE USED ONLY FOR THE PURPOSES SPECIFIED IN THE ORDER. IT IS NOT TO BE REPRODUCED, COPIED, OR DISTRIBUTED IN ANY MANNER WITHOUT THE WRITTEN CONSENT OF SAMTEC INC.

UNLESS OTHERWISE NOTED TOLERANCES ARE:
ONE PLACE DECIMALS ±.1[2.5] THREE PLACE DECIMALS ±.005[.13] ANGLES ± 2°
TWO PLACE DECIMALS ±.01[.25] FOUR PLACE DECIMALS ±.0020[.051]

TITLE: .050 [1.27] x .050 [1.27] DOUBLE VERTICAL SMT TERMINAL STRIP
DWG NO: FTSH-1XX-XX-XX-DV-XXX
SHEET 2 OF 4

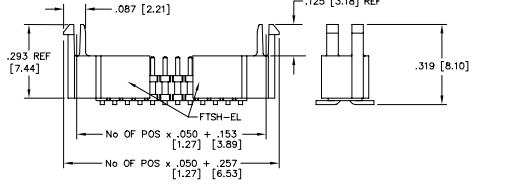


FIG. 6
(DIFFERENT AS SHOWN, OTHERWISE SAME AS FIG. 2)
-EL OPTION (USE ONLY WHEN MATING WITH CLP)

FIG. 7
-P WITH -EJ OR -EJM OPTIONS VIEW
(DIFFERENT AS SHOWN, OTHERWISE SAME AS FIG. 1 AND 8)

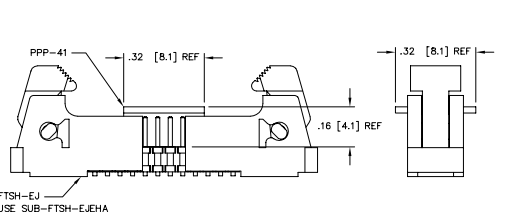


FIG. 9
(DIFFERENT AS SHOWN, OTHERWISE SAME AS FIG. 2)

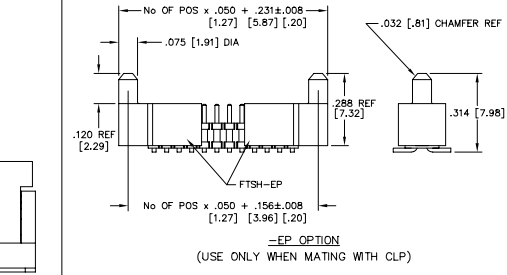


FIG. 9
-EP OPTION
(USE ONLY WHEN MATING WITH CLP)

samtec EXPRO/ASSEMBLY/050 FTSH-02

520 PARK EAST BLD. NEW ALBANY, INDIANA 47150
PHONE (812) 944-6733 P.O. BOX 1147
CODE 55322

MADE BY: BRATCHER 05-03-95 FTSH-1XX-XX-XX-DV-XXX
SHEET 2 OF 4