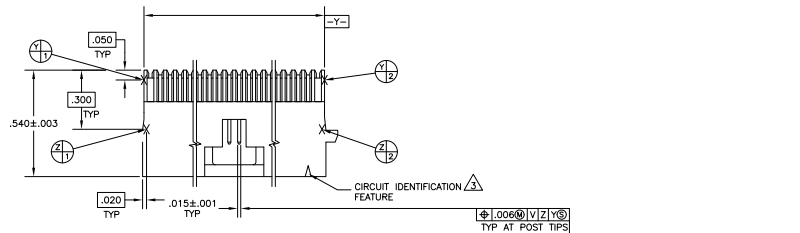
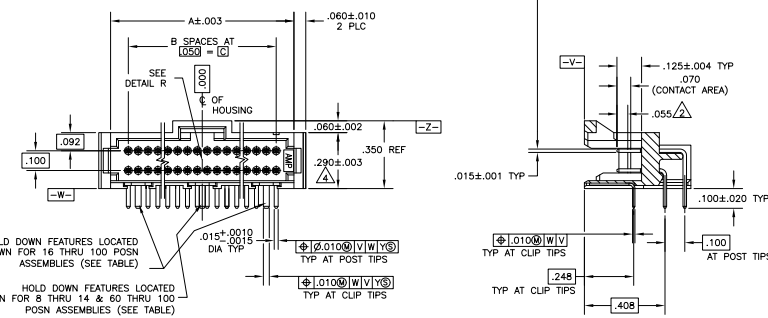


REV	BY	DATE	REVISIONS
AD	00	03/23	REVISIONS RECEIVED
			REVISED PER EDD-11-004587



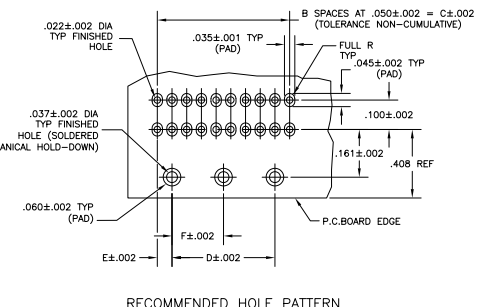
- △ CONTACT AREA PLATED WITH .000030 MIN GOLD, SOLDER LEADS PLATED WITH .000150 TIN LEAD, ALL OVER .000050 NICKEL
- △ POINT OF MEASUREMENT FOR GOLD THICKNESS
- △ CIRCUIT IDENTIFICATION FEATURE OMITTED ON 8,10,12,& 14 POSITION HEADER ASSEMBLIES
- △ DIMENSION APPLIES AT BASE OF SHROUD
- △ THE NOTED DIMENSIONS APPLY AT THE INTERSECTION OF THE POST AND HOUSING
- △ CONTACT AREA PLATED WITH .000030 MIN GOLD, SOLDER LEADS PLATED WITH .000150 TIN, ALL OVER .000050 NICKEL
- △ OBSOLETE PARTS: OBSOLETE CIS STREAMLINING PER D.RENAUD/D.SINISI



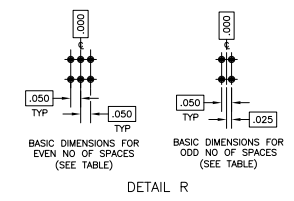
HOLD DOWN FEATURES LOCATED AS SHOWN FOR 16 THRU 100 POSN ASSEMBLIES (SEE TABLE)

HOLD DOWN FEATURES LOCATED AS SHOWN FOR 8 THRU 14 & 60 THRU 100 POSN ASSEMBLIES (SEE TABLE)

	F	E	D	C	B	A	NO OF POSN	PART NUMBER
△	.775	.050	1.550	1.650	33	1.830	68	6-104069-8
△	1.175	.050	2.350	2.450	49	2.630	100	6-104069-7
△	.825	.050	1.650	1.750	35	1.930	72	6-104069-6
△ PRELIMINARY	-.050	.950	1.050	2.1	1.230	44	6-104069-5	
△	-.050	.700	.800	16	.980	34	6-104069-4	
△	-.050	.500	.600	12	.780	26	6-104069-3	
△	-.050	.450	.550	11	.730	24	6-104069-2	
△	-.050	.250	.350	7	.530	16	6-104069-1	
△	-.150	-.300	6	4.80	14	6-104069-0		
△ PRELIMINARY	-.125	-.250	5	4.30	12	5-104069-9		
△ OBSOLETE	-.075	-.150	3	3.30	8	5-104069-8		
△	.675	.050	1.350	1.450	29	1.630	60	5-104069-7
△	-.050	.850	.950	19	1.130	40	5-104069-6	
△	-.100	-.200	4	.380	10	5-104069-4		
△	.925	.050	1.850	1.950	39	2.130	80	5-104069-3
△	-.050	1.100	1.200	24	1.380	50	5-104069-2	
△	-.050	.350	.450	9	.630	20	5-104069-1	
△	.775	.050	1.550	1.650	33	1.830	68	1-104069-8
△	1.175	.050	2.350	2.450	49	2.630	100	1-104069-7
△ OBSOLETE	.825	.050	1.650	1.750	35	1.930	72	1-104069-6
△	-.050	.950	1.050	21	1.230	44	1-104069-5	
△	-.050	.700	.800	16	.980	34	1-104069-4	
△	-.050	.500	.600	12	.780	26	1-104069-3	
△	-.050	.450	.550	11	.730	24	1-104069-2	
△	-.050	.250	.350	7	.530	16	1-104069-1	
△	-.150	-.300	6	4.80	14	1-104069-0		
△ OBSOLETE	-.125	-.250	5	4.30	12	104069-9		
△ OBSOLETE	-.075	-.150	3	3.30	8	104069-8		
△	.675	.050	1.350	1.450	29	1.630	60	104069-7
△	-.050	.850	.950	19	1.130	40	104069-6	
△	-.100	-.200	4	.380	10	104069-4		
△	.925	.050	1.850	1.950	39	2.130	80	104069-3
△	-.050	1.100	1.200	24	1.380	50	104069-2	
△	-.050	.350	.450	9	.630	20	104069-1	



RECOMMENDED HOLE PATTERN



DETAIL R

THIS DRAWING IS A CONTROLLED DOCUMENT. NO REVISIONS TO BE MADE WITHOUT AUTHORITY.

REVISIONS: 11-20031, 108-1093

NO OF POSN: 72

PART NUMBER: 6-104069

CUSTOMER DRAWING