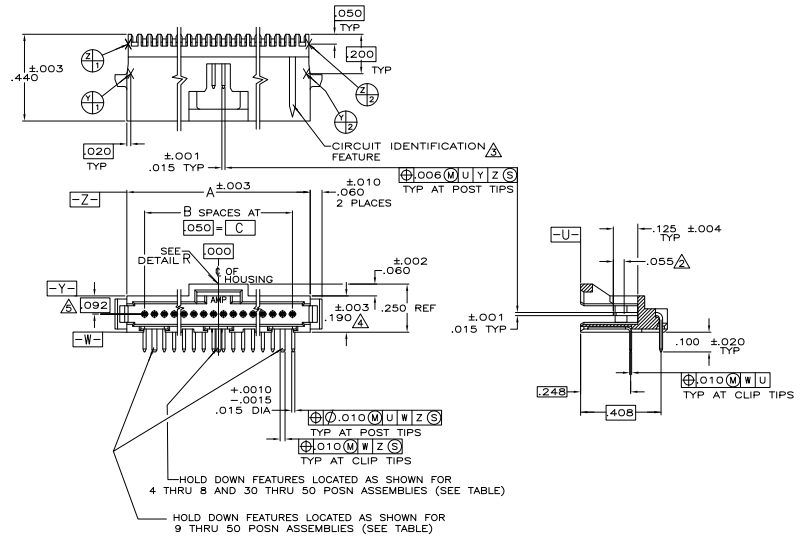


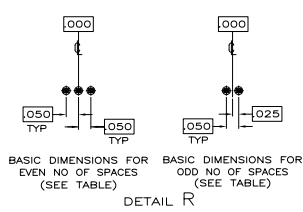
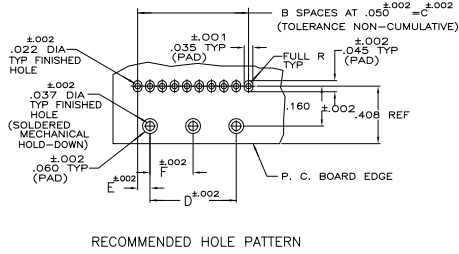
REV	DATE	DESCRIPTION	BY	CHK
AD	00	REVISED PER EDD-11-004587	11MR11	RK HMR



- △ CONTACT AREAS PLATED WITH .00030 GOLD, SOLDER TAILS PLATED WITH .000150 TIN-LEAD, ALL OVER .000050 NICKEL
- △ POINT OF MEASUREMENT FOR GOLD THICKNESS
- △ CIRCUIT IDENTIFICATION FEATURE OMITTED ON 4, 5, 6 & 7 POSITION HEADER ASSEMBLIES
- △ DIMENSION APPLIES AT BASE OF SHROUD
- △ THE NOTED DIMENSIONS APPLY AT THE INTERSECTION OF THE POST AND HOUSING
- △ CONTACT AREAS PLATED WITH .00030 GOLD, SOLDER TAILS PLATED WITH .000150 TIN, ALL OVER .000050 NICKEL
- △ MATERIAL: HOUSING - THERMOPLASTIC, COLOR-BLACK CONTACT - COPPER ALLOY
- △ OBSOLETE PARTS: OBSOLETE CIS STREAMLINING PER D.RENAUD/D.SINISI

HOLD DOWN FEATURES LOCATED AS SHOWN FOR 4 THRU 8 AND 30 THRU 50 POSN ASSEMBLIES (SEE TABLE)

HOLD DOWN FEATURES LOCATED AS SHOWN FOR 9 THRU 50 POSN ASSEMBLIES (SEE TABLE)



	.625	.050	1.250	1.350	27	1.530	28	7-104074-0
△ OBSOLETE	1.175	.050	2.350	2.450	49	2.630	50	6-104074-9
△	1.050	.050	2.100	2.200	44	2.380	45	6-104074-8
△	.925	.050	1.850	1.950	39	2.130	40	6-104074-7
△	.825	.050	1.650	1.750	35	1.930	36	6-104074-6
△ OBSOLETE	.600	.050	1.200	1.300	26	1.480	27	6-104074-5
△ OBSOLETE	-.050	.950	1.050	21	1.230	22	6-104074-4	
△ OBSOLETE	-.050	.700	.800	16	.980	17	6-104074-3	
△ OBSOLETE	-.050	.500	.600	12	.780	13	6-104074-2	
△	-.050	.450	.550	11	.730	12	6-104074-1	
△	-.175	-.350	7	5.30	8	6-104074-0		
△	-.150	-.300	6	4.80	7	5-104074-9		
△	-.125	-.250	5	4.30	6	5-104074-8		
△	-.075	-.150	3	3.30	4	5-104074-7		
△	.675	.050	1.350	1.450	29	1.630	30	5-104074-6
△	-.050	1.100	1.200	24	1.380	25	5-104074-5	
△	-.050	.850	.950	19	1.130	20	5-104074-4	
△	-.050	.600	.700	14	.880	15	5-104074-3	
△	-.100	-.200	4	3.80	5	5-104074-2		
△	-.050	.350	.450	9	6.30	10	5-104074-1	
△ OBSOLETE	.625	.050	1.250	1.350	27	1.530	28	2-104074-0
△	1.175	.050	2.350	2.450	49	2.630	50	1-104074-9
△	1.050	.050	2.100	2.200	44	2.380	45	1-104074-8
△	.925	.050	1.850	1.950	39	2.130	40	1-104074-7
△	.825	.050	1.650	1.750	35	1.930	36	1-104074-6
△	.600	.050	1.200	1.300	26	1.480	27	1-104074-5
△	-.050	.950	1.050	21	1.230	22	1-104074-4	
△	-.050	.700	.800	16	.980	17	1-104074-3	
△	-.050	.500	.600	12	.780	13	1-104074-2	
△	-.050	.450	.550	11	.730	12	1-104074-1	
△	-.175	-.350	7	5.30	8	1-104074-0		
△	-.150	-.300	6	4.80	7	104074-9		
△	-.125	-.250	5	4.30	6	104074-8		
△	-.075	-.150	3	3.30	4	104074-7		
△	.675	.050	1.350	1.450	29	1.630	30	104074-6
△	-.050	1.100	1.200	24	1.380	25	104074-5	
△	-.050	.850	.950	19	1.130	20	104074-4	
△	-.050	.600	.700	14	.880	15	104074-3	
△	-.100	-.200	4	3.80	5	104074-2		
△	-.050	.350	.450	9	6.30	10	104074-1	
	F	E	D	C	B	A	NO OF POSN	PART NUMBER

THIS DRAWING IS A CONTROLLED DOCUMENT. THE ORIGINAL IS KEPT AT THE HEADQUARTERS OF THE COMPANY.

TE Connectivity
 TE Connectivity
 SINGLE ROW, W/SIDE & END LATCHES
 AUTOMOTIVE SYSTEM SO.

114-25031
 108-1093
 111-25031

DATE: 11/11/11
 DRAWING NO: 100779
 REV: 1
 PART NO: 104074