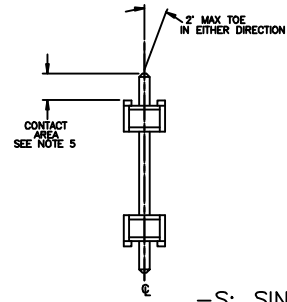
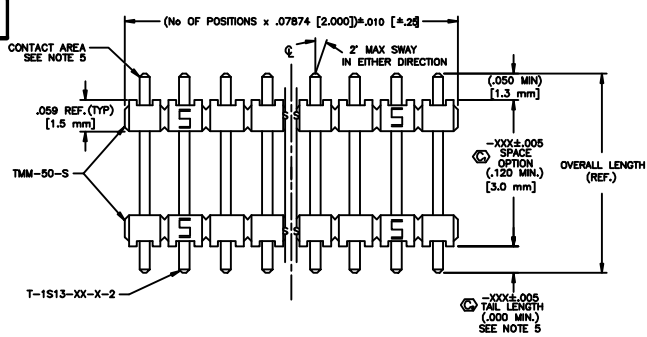


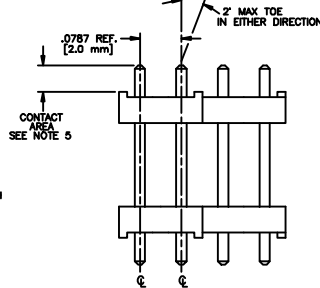
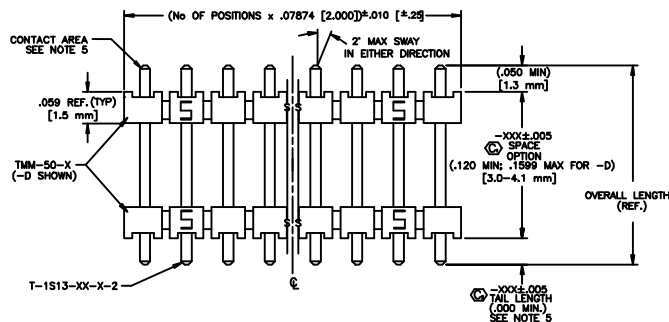
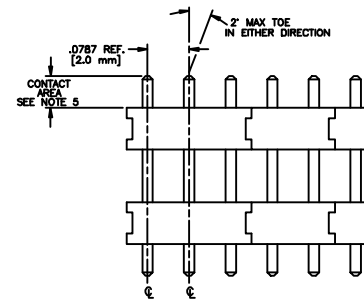
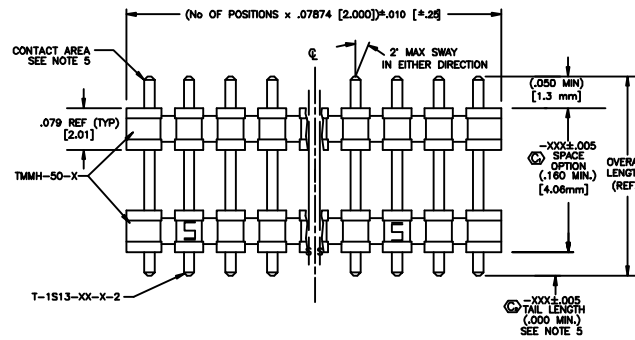
REV. AZ

UNLESS OTHERWISE NOTED	TELEPHONE AREA:	TITLE: HIGH TEMP 2mm TERMINAL STRIP (BOARD STACKING)	DWG NO.: TW-XX-XX-X-X-XXX-XXX-XXX-XX
ONE PLACE DECIMALS ± .1 (2.54mm)	THREE PLACE DECIMALS ± .001 (0.1mm)	ANGLES ± 5°	SHEET 2 OF 3
TWO PLACE DECIMALS ± .01 (0.25mm)	FOUR PLACE DECIMALS ± .0001 (0.01mm)		

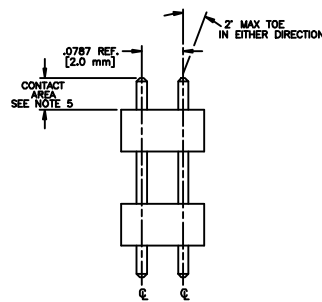
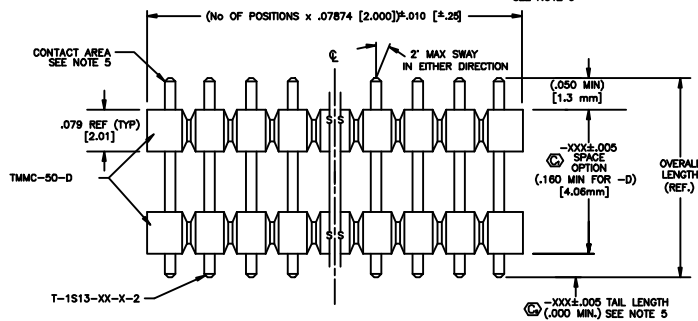


-S: SINGLES

- T: TRIPLE
- 5: FIVE ROW
- 6: SIX ROW



- D: DOUBLE
- Q: QUAD



**PROPRIETARY NOTE**  
This drawing and the information contained herein are the property of Samtec Corporation. No part of this drawing may be reproduced, stored in a retrieval system, or transmitted in any form or by any means, electronic, mechanical, photocopying, recording, or otherwise, without the prior written permission of Samtec Corporation.

FIG. SCALE 1=11

EXP/PROD ASSEMBLY 2MM TW-AS2

**samtec**

830 PARK EAST BLVD. NEW ALBANY, INDIANA 47180  
PHONE (812) 944-8733 P.O. BOX 1147  
CODE 85322

DATE BY MATT CARTER 6-19-98 TW-XX-X-X-XXX-XXX-XXX-XX SHEET 2 OF 3