

REV. AP

DIMENSIONS ARE IN INCHES		UNLESS OTHERWISE NOTED	TOLERANCES ARE:
ONE PLACE DECIMALS	±.1	THREE PLACE DECIMALS	± .005
TWO PLACE DECIMALS	±.01	FOUR PLACE DECIMALS	± .0020
			ANGLES ± 2°

TITLE: **LOW COST BOARD SPACERS**

DWG NO: XW-XX-XX-XXXX-X-XXXX-XXXX-XX-XXX  
SHEET 2 OF 2

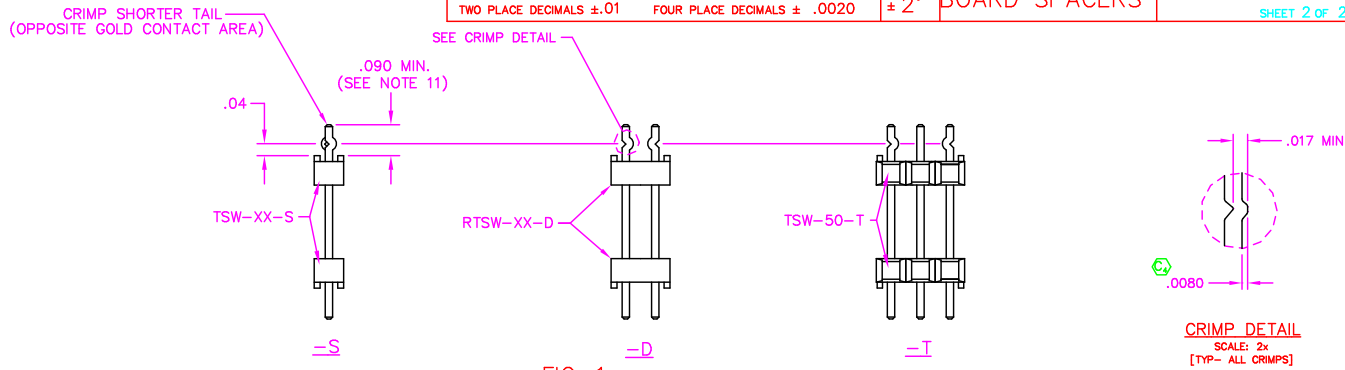
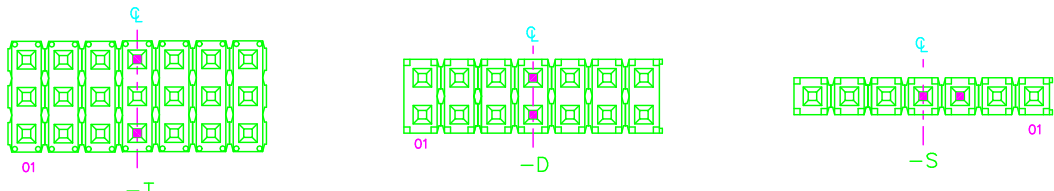
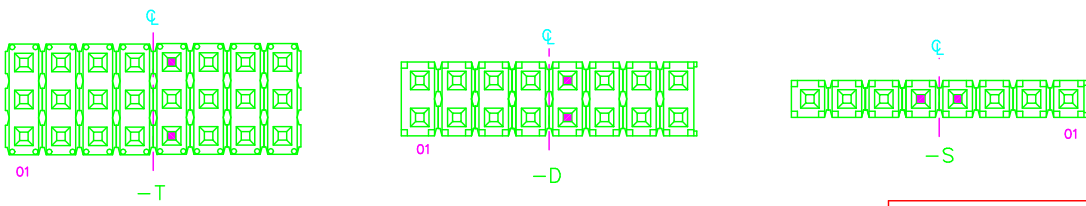


FIG. 1  
LOCKING LEAD OPTION



■ = CRIMP LOCATION  
CRIMP CENTER POSITION AND PIN CLOSEST TO PIN 1  
ODD POSITIONS



■ = CRIMP LOCATION  
TWO CENTER MOST PINS TO BE CRIMPED  
EVEN POSITIONS

**PROPRIETARY NOTE**  
THIS DOCUMENT CONTAINS INFORMATION CONFIDENTIAL AND PROPRIETARY TO SAMTEC INC. AND SHALL NOT BE REPRODUCED OR TRANSMITTED TO OTHER DOCUMENTS OR DISCLOSED TO OTHERS OR USED FOR ANY PURPOSE OTHER THAN THAT FOR WHICH IT WAS OBTAINED WITHOUT THE EXPRESSED WRITTEN CONSENT OF SAMTEC INC.

EXISPROD\ASSEMBLY\100  
XW-ASM2

**samtec**

520 PARK EAST BLVD. NEW ALBANY, INDIANA 47150  
PHONE (812) 944-6733 P.O. BOX 1147  
CODE 55322

MADE BY: WILLIAMS 8-13-84

XW-XX-XX-XXXX-X-XXXX-XXXX-XX-XXX  
SHEET 2 OF 2