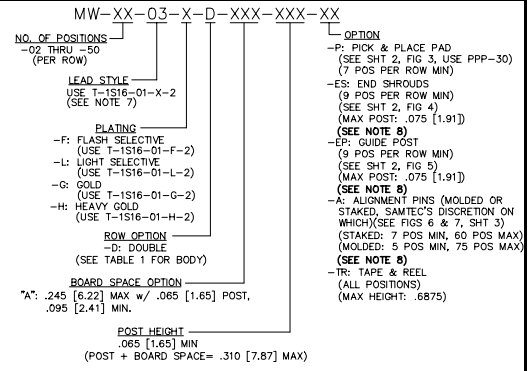
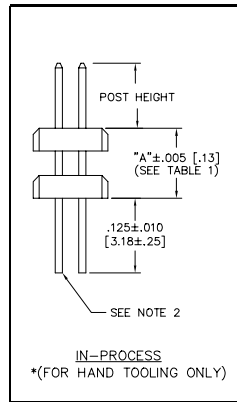
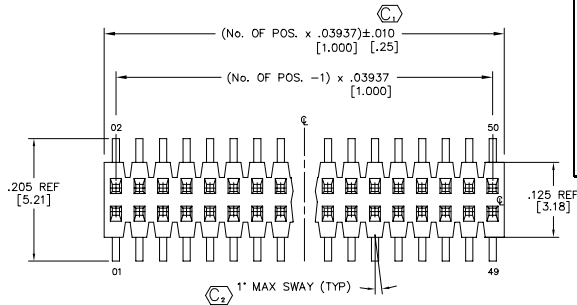


REVISION AJ

DIMENSIONS ARE IN INCHES		UNLESS OTHERWISE NOTED		TOLERANCES ARE:		TITLE: 1mm x 1mm CENTERLINE SURFACE MOUNT BOARD STACKER ASSEMBLY		DWG NO: MW-XX-03-X-D-XXX-XXX-XX	
ONE PLACE DECIMALS ±.1	[.25]	THREE PLACE DECIMALS ±.005	[.13]	ANGLES	± 3°			SHEET 1 OF 3	
TWO PLACE DECIMALS ±.01	[.3]	FOUR PLACE DECIMALS ±.0020	[.051]						

"A" RANGE	BODY STYLE		FIG.
	UPPER	LOWER	
.095 - .129 [2.41 - 3.28]	FTM-50-D	FTM-50-D	2
.130 - .245 [3.30 - 6.22]	FTMH-75-D	MW-75-D	1

SEE NOTES 5 & 6



- NOTES:
- PARTS MAY BE CUT TO POSITION; .010 MAX CUT FLASH.
 - SHEAR TAILS TO DIMENSION SHOWN; .003 MAX BURR.
 - REPRESENTS A CRITICAL DIMENSION (FOR HAND TOOLING ONLY)
 - PACKAGE POSITIONS 02 THROUGH 50 IN TUBES; LAYER PACKAGE POSITIONS 02 THROUGH 04.
 - HAND ASSEMBLED PARTS TO BE 2 BLACK BODIES AND MACHINE ASSEMBLED TO BE TOP-BLACK BOTTOM; NATURAL BOARD SPACE .130-.245. BOARD SPACE .095-.129 WILL HAVE BLACK FTM BODY.
 - FOR HAND FILL, USE FTMH-75-D FOR LOWER BODY.
 - FOR MACHINE FILLED, USE T-1516-03-X-2.
 - AVAILABLE ONLY WITH BOARD SPACE .130 TO .245.

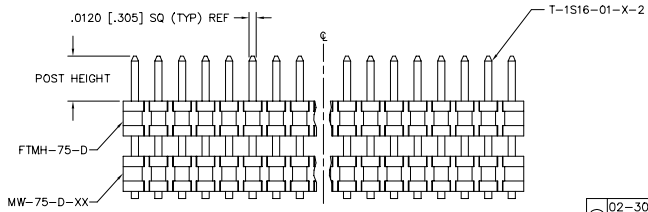


FIG. 2 (DIFFERENT AS SHOWN, OTHERWISE SAME AS FIGURE 1)

PROPRIETARY NOTE
THIS DOCUMENT CONTAINS UNCLASSIFIED INFORMATION
EXCEPT WHERE SHOWN OTHERWISE
IT IS THE PROPERTY OF SAMTEC, INC.
AND IS TO BE USED ONLY FOR THE
PURPOSES SPECIFIED IN THE
ORDER AND/OR CONTRACT.
NO PART OF THIS DOCUMENT IS TO BE
REPRODUCED OR TRANSMITTED IN ANY
FORM OR BY ANY MEANS, ELECTRONIC,
MECHANICAL, OR BY ANY INFORMATION
STORAGE AND RETRIEVAL SYSTEM,
WITHOUT PERMISSION IN WRITING
FROM SAMTEC, INC.

MATERIALS FTM-50-D & FTMH-75-D LIQUID CRYSTAL POLYMER COLOR: BLACK MW-75-D-XX LIQUID CRYSTAL POLYMER COLOR: NATURAL PHOS BRONZE MAX FLASK ALLOWED: .002 [0.05] MAX GATE VENTING ALLOWED: .002 [0.05]		EXPRESS/ASSEMBLY™ mw-asm 520 PARK EAST BLVD., NEW ALBANY, INDIANA 47150 PHONE (812) 944-0733 P.O. BOX 1147 CODE 55322	
MADE BY: BRATHER 4-3-95		MW-XX-03-X-D-XXX-XXX-XX SHEET 1 OF 3	