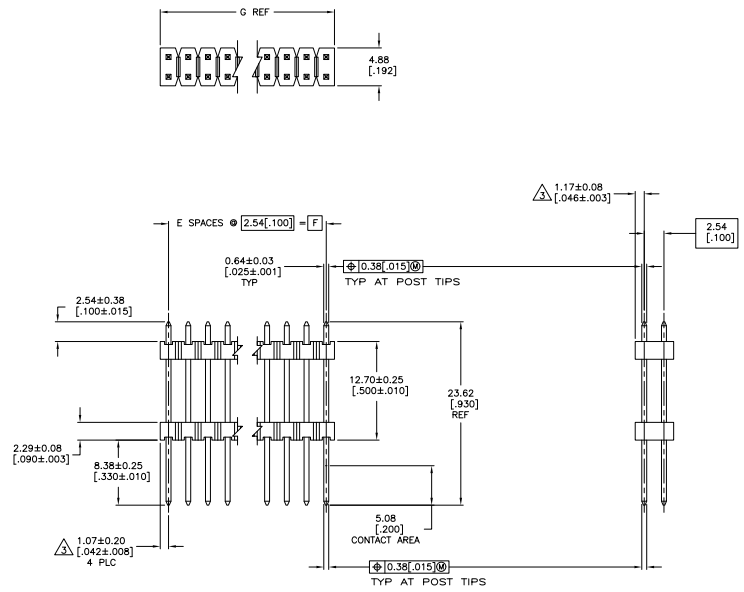
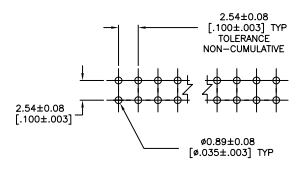


THIS DRAWING IS UNPUBLISHED
 ALL RIGHTS RESERVED

| REV | DESCRIPTION | DATE | BY | APP |
|-------|---------------------------|---------|----|-----|
| AD 00 | | | | |
| AT | REVISED PER ECO-11-004820 | 11MAR11 | RC | HMR |



- 1. ASSEMBLY MAY BE BROKEN TO THE DESIRED NUMBER OF POSITIONS
 - 2. TRUE POSITION TOLERANCE OF THE POST TIPS APPLIES WHEN THE HEADER IS HELD FLAT AGAINST THE PRINTED CIRCUIT BOARD
- △ THE NOTED DIMENSIONS APPLY AT THE INTERSECTION OF THE POST AND HOUSING
- △ HOUSING: FLAME RETARDANT THERMOPLASTIC; COLOR: BLACK.
- △ FINISH: 0.000381 [0.00015] GOLD ON CONTACT AREA, 0.00254-0.00508 [0.00100-0.00200] MATTE TIN-LEAD ON SOLDER TAIL, 0.00127 [0.00050] NICKEL ENTIRE POST.
- △ FINISH: 0.000381 [0.00015] GOLD ON CONTACT AREA, 0.00254-0.00508 [0.00100-0.00200] MATTE TIN ON SOLDER TAIL, 0.00127 [0.00050] NICKEL ENTIRE POST.



RECOMMENDED HOLE LAYOUT

| UNLESS OTHERWISE SPECIFIED: | | INCHES | MILLIMETERS |
|-----------------------------|-----------------|--------|-------------|
| FINISH | ASSEMBLY METHOD | INCHES | MILLIMETERS |
| FINISH | ASSEMBLY METHOD | INCHES | MILLIMETERS |
| FINISH | ASSEMBLY METHOD | INCHES | MILLIMETERS |
| FINISH | ASSEMBLY METHOD | INCHES | MILLIMETERS |
| FINISH | ASSEMBLY METHOD | INCHES | MILLIMETERS |

THIS DRAWING IS A CONTROLLED DOCUMENT.

| | | | | | |
|------|-------|-----|---|----|---|
| DATE | 00779 | REV | 1 | OF | 2 |
| DATE | 00779 | REV | 2 | OF | 2 |

CUSTOMER DRAWING

THIS DRAWING IS UNPUBLISHED
 ALL RIGHTS RESERVED

REVISONS
 REVISION DESCRIPTION DATE BY APP
 - SEE SHEET 1 - - -

| | | | | | |
|---------|---------|---------|----|------------------|-------------|
| △ | 101.19 | 99.06 | 39 | 80 | 9-146494-0 |
| △ | [3.884] | [3.900] | | | |
| △ | 98.65 | 96.52 | 38 | 78 | 8-146494-9 |
| △ | [3.884] | [3.800] | | | |
| △ | 96.11 | 93.98 | 37 | 76 | 8-146494-8 |
| △ | [3.784] | [3.700] | | | |
| △ | 93.57 | 91.44 | 36 | 74 | 8-146494-7 |
| △ | [3.684] | [3.600] | | | |
| △ | 91.03 | 88.90 | 35 | 72 | 8-146494-6 |
| △ | [3.584] | [3.500] | | | |
| △ | 88.49 | 86.36 | 34 | 70 | 8-146494-5 |
| △ | [3.484] | [3.400] | | | |
| △ | 85.95 | 83.82 | 33 | 68 | 8-146494-4 |
| △ | [3.384] | [3.300] | | | |
| △ | 83.41 | 81.28 | 32 | 66 | 8-146494-3 |
| △ | [3.284] | [3.200] | | | |
| △ | 80.87 | 78.74 | 31 | 64 | 8-146494-2 |
| △ | [3.184] | [3.100] | | | |
| △ | 78.33 | 76.20 | 30 | 62 | 8-146494-1 |
| △ | [3.084] | [3.000] | | | |
| △ | 75.79 | 73.66 | 29 | 60 | 8-146494-0 |
| △ | [2.984] | [2.900] | | | |
| △ | 73.25 | 71.12 | 28 | 58 | 7-146494-9 |
| △ | [2.884] | [2.800] | | | |
| △ | 70.71 | 68.58 | 27 | 56 | 7-146494-8 |
| △ | [2.784] | [2.700] | | | |
| △ | 68.17 | 66.04 | 26 | 54 | 7-146494-7 |
| △ | [2.684] | [2.600] | | | |
| △ | 65.63 | 63.50 | 25 | 52 | 7-146494-6 |
| △ | [2.584] | [2.500] | | | |
| △ | 63.09 | 60.96 | 24 | 50 | 7-146494-5 |
| △ | [2.484] | [2.400] | | | |
| △ | 60.55 | 58.42 | 23 | 48 | 7-146494-4 |
| △ | [2.384] | [2.300] | | | |
| △ | 58.01 | 55.88 | 22 | 46 | 7-146494-3 |
| △ | [2.284] | [2.200] | | | |
| △ | 55.47 | 53.34 | 21 | 44 | 7-146494-2 |
| △ | [2.184] | [2.100] | | | |
| △ | 52.93 | 50.80 | 20 | 42 | 7-146494-1 |
| △ | [2.084] | [2.000] | | | |
| △ | 50.39 | 48.26 | 19 | 40 | 7-146494-0 |
| △ | [1.984] | [1.900] | | | |
| △ | 47.85 | 45.72 | 18 | 38 | 6-146494-9 |
| △ | [1.884] | [1.800] | | | |
| △ | 45.31 | 43.18 | 17 | 36 | 6-146494-8 |
| △ | [1.784] | [1.700] | | | |
| △ | 42.77 | 40.64 | 16 | 34 | 6-146494-7 |
| △ | [1.684] | [1.600] | | | |
| △ | 40.23 | 38.10 | 15 | 32 | 6-146494-6 |
| △ | [1.584] | [1.500] | | | |
| △ | 37.69 | 35.56 | 14 | 30 | 6-146494-5 |
| △ | [1.484] | [1.400] | | | |
| △ | 35.15 | 33.02 | 13 | 28 | 6-146494-4 |
| △ | [1.384] | [1.300] | | | |
| △ | 32.61 | 30.48 | 12 | 26 | 6-146494-3 |
| △ | [1.284] | [1.200] | | | |
| △ | 30.07 | 27.94 | 11 | 24 | 6-146494-2 |
| △ | [1.184] | [1.100] | | | |
| △ | 27.53 | 25.40 | 10 | 22 | 6-146494-1 |
| △ | [1.084] | [1.000] | | | |
| △ | 24.99 | 22.86 | 9 | 20 | 6-146494-0 |
| △ | [.984] | [.900] | | | |
| △ | 22.45 | 20.32 | 8 | 18 | 5-146494-9 |
| △ | [.884] | [.800] | | | |
| △ | 19.91 | 17.78 | 7 | 16 | 5-146494-8 |
| △ | [.784] | [.700] | | | |
| △ | 17.37 | 15.24 | 6 | 14 | 5-146494-7 |
| △ | [.684] | [.600] | | | |
| △ | 14.83 | 12.70 | 5 | 12 | 5-146494-6 |
| △ | [.584] | [.500] | | | |
| △ | 12.29 | 10.16 | 4 | 10 | 5-146494-5 |
| △ | [.484] | [.400] | | | |
| △ | 9.75 | 7.62 | 3 | 8 | 5-146494-4 |
| △ | [.384] | [.300] | | | |
| △ | 7.21 | 5.08 | 2 | 6 | 5-146494-3 |
| △ | [.284] | [.200] | | | |
| △ | 4.67 | 2.54 | 1 | 4 | 5-146494-2 |
| △ | [.184] | [.100] | | | |
| △ | 2.13 | - | - | 2 | 5-146494-1 |
| △ | [.084] | - | - | | |
| PLATING | G | F | E | NO. OF POSITIONS | PART NUMBER |

| | | | | | |
|---------|---------|---------|----|------------------|-------------|
| △ | 101.19 | 99.06 | 39 | 80 | 4-146494-0 |
| △ | [3.884] | [3.900] | | | |
| △ | 98.65 | 96.52 | 38 | 78 | 3-146494-9 |
| △ | [3.884] | [3.800] | | | |
| △ | 96.11 | 93.98 | 37 | 76 | 3-146494-8 |
| △ | [3.784] | [3.700] | | | |
| △ | 93.57 | 91.44 | 36 | 74 | 3-146494-7 |
| △ | [3.684] | [3.600] | | | |
| △ | 91.03 | 88.90 | 35 | 72 | 3-146494-6 |
| △ | [3.584] | [3.500] | | | |
| △ | 88.49 | 86.36 | 34 | 70 | 3-146494-5 |
| △ | [3.484] | [3.400] | | | |
| △ | 85.95 | 83.82 | 33 | 68 | 3-146494-4 |
| △ | [3.384] | [3.300] | | | |
| △ | 83.41 | 81.28 | 32 | 66 | 3-146494-3 |
| △ | [3.284] | [3.200] | | | |
| △ | 80.87 | 78.74 | 31 | 64 | 3-146494-2 |
| △ | [3.184] | [3.100] | | | |
| △ | 78.33 | 76.20 | 30 | 62 | 3-146494-1 |
| △ | [3.084] | [3.000] | | | |
| △ | 75.79 | 73.66 | 29 | 60 | 3-146494-0 |
| △ | [2.984] | [2.900] | | | |
| △ | 73.25 | 71.12 | 28 | 58 | 2-146494-9 |
| △ | [2.884] | [2.800] | | | |
| △ | 70.71 | 68.58 | 27 | 56 | 2-146494-8 |
| △ | [2.784] | [2.700] | | | |
| △ | 68.17 | 66.04 | 26 | 54 | 2-146494-7 |
| △ | [2.684] | [2.600] | | | |
| △ | 65.63 | 63.50 | 25 | 52 | 2-146494-6 |
| △ | [2.584] | [2.500] | | | |
| △ | 63.09 | 60.96 | 24 | 50 | 2-146494-5 |
| △ | [2.484] | [2.400] | | | |
| △ | 60.55 | 58.42 | 23 | 48 | 2-146494-4 |
| △ | [2.384] | [2.300] | | | |
| △ | 58.01 | 55.88 | 22 | 46 | 2-146494-3 |
| △ | [2.284] | [2.200] | | | |
| △ | 55.47 | 53.34 | 21 | 44 | 2-146494-2 |
| △ | [2.184] | [2.100] | | | |
| △ | 52.93 | 50.80 | 20 | 42 | 2-146494-1 |
| △ | [2.084] | [2.000] | | | |
| △ | 50.39 | 48.26 | 19 | 40 | 2-146494-0 |
| △ | [1.984] | [1.900] | | | |
| △ | 47.85 | 45.72 | 18 | 38 | 1-146494-9 |
| △ | [1.884] | [1.800] | | | |
| △ | 45.31 | 43.18 | 17 | 36 | 1-146494-8 |
| △ | [1.784] | [1.700] | | | |
| △ | 42.77 | 40.64 | 16 | 34 | 1-146494-7 |
| △ | [1.684] | [1.600] | | | |
| △ | 40.23 | 38.10 | 15 | 32 | 1-146494-6 |
| △ | [1.584] | [1.500] | | | |
| △ | 37.69 | 35.56 | 14 | 30 | 1-146494-5 |
| △ | [1.484] | [1.400] | | | |
| △ | 35.15 | 33.02 | 13 | 28 | 1-146494-4 |
| △ | [1.384] | [1.300] | | | |
| △ | 32.61 | 30.48 | 12 | 26 | 1-146494-3 |
| △ | [1.284] | [1.200] | | | |
| △ | 30.07 | 27.94 | 11 | 24 | 1-146494-2 |
| △ | [1.184] | [1.100] | | | |
| △ | 27.53 | 25.40 | 10 | 22 | 1-146494-1 |
| △ | [1.084] | [1.000] | | | |
| △ | 24.99 | 22.86 | 9 | 20 | 1-146494-0 |
| △ | [.984] | [.900] | | | |
| △ | 22.45 | 20.32 | 8 | 18 | 146494-9 |
| △ | [.884] | [.800] | | | |
| △ | 19.91 | 17.78 | 7 | 16 | 146494-8 |
| △ | [.784] | [.700] | | | |
| △ | 17.37 | 15.24 | 6 | 14 | 146494-7 |
| △ | [.684] | [.600] | | | |
| △ | 14.83 | 12.70 | 5 | 12 | 146494-6 |
| △ | [.584] | [.500] | | | |
| △ | 12.29 | 10.16 | 4 | 10 | 146494-5 |
| △ | [.484] | [.400] | | | |
| △ | 9.75 | 7.62 | 3 | 8 | 146494-4 |
| △ | [.384] | [.300] | | | |
| △ | 7.21 | 5.08 | 2 | 6 | 146494-3 |
| △ | [.284] | [.200] | | | |
| △ | 4.67 | 2.54 | 1 | 4 | 146494-2 |
| △ | [.184] | [.100] | | | |
| △ | 2.13 | - | - | 2 | 146494-1 |
| △ | [.084] | - | - | | |
| PLATING | G | F | E | NO. OF POSITIONS | PART NUMBER |

THIS DRAWING IS A CONTROLLED DOCUMENT. SEE SECTION 1000000

TE Connectivity

HEADER ASSEMBLY, MOD II, STACKING, DOUBLE ROW, .002 SQ. POST, UNBROUDED

DATE: 00779 (G=146494)

CUSTOMER DRAWING

REV: 4.1 SHEET 2 OF 2