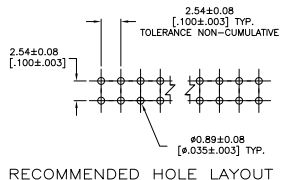
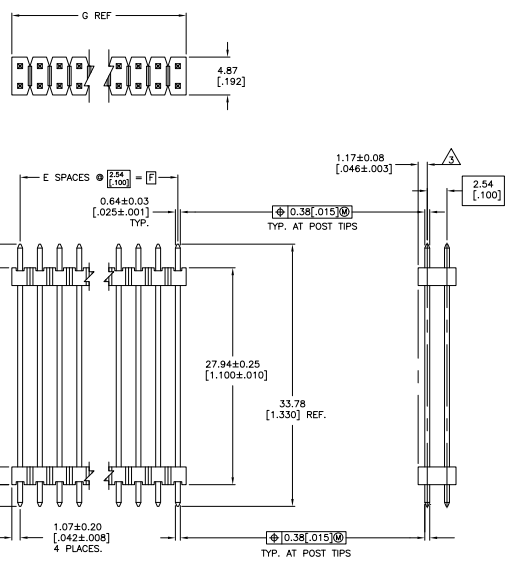


REV	DATE	DESCRIPTION	BY	CHK	APP
AD 39		REVISED PER EDD-11-004820	AT		



- ASSEMBLY MAY BE BROKEN TO THE DESIRED NUMBER OF POSITIONS.
 - TRUE POSITION TOLERANCE OF THE POST TIPS APPLIES WHEN THE HEADER IS HELD FLAT AGAINST THE PRINTED CIRCUIT BOARD.
- ▲ THE NOTED DIMENSIONS APPLY AT THE INTERSECTION OF THE POST AND HOUSING.
 ▲ HOUSING: FLAME RETARDANT THERMOPLASTIC; COLOR: BLACK.
 ▲ FINISH: 0.00254-0.00508 [0.00100-0.00200] BRIGHT TIN-LEAD OVER 0.00127 [0.00050] NICKEL ENTIRE POST.
 ▲ FINISH: 0.00254-0.00508 [0.00100-0.00200] MATTE TIN OVER 0.00127 [0.00050] NICKEL ENTIRE POST.

PLATING	G	F	E	NO. OF POSITIONS	PART NUMBER
▲	101.19	99.06	39	80	9-146505-0
▲	3.984	3.900	38	78	8-146505-9
▲	3.884	3.800	37	76	8-146505-8
▲	3.784	3.700	36	74	8-146505-7
▲	93.57	91.44	35	72	8-146505-6
▲	3.684	3.600	34	70	8-146505-5
▲	91.03	88.90	33	68	8-146505-4
▲	3.584	3.500	32	66	8-146505-3
▲	85.95	83.82	31	64	8-146505-2
▲	3.484	3.400	30	62	8-146505-1
▲	83.41	81.28	29	60	8-146505-0
▲	3.384	3.300	28	58	7-146505-9
▲	80.87	78.74	27	56	7-146505-8
▲	3.284	3.200	26	54	7-146505-7
▲	78.33	76.20	25	52	7-146505-6
▲	3.084	3.000	24	50	7-146505-5
▲	75.79	73.66	23	48	7-146505-4
▲	2.984	2.900	22	46	7-146505-3
▲	73.25	71.12	21	44	7-146505-2
▲	2.884	2.800	20	42	7-146505-1
▲	70.71	68.58	19	40	7-146505-0
▲	2.784	2.700	18	38	6-146505-9
▲	68.17	66.04	17	36	6-146505-8
▲	2.684	2.600	16	34	6-146505-7
▲	65.63	63.50	15	32	6-146505-6
▲	2.584	2.500	14	30	6-146505-5
▲	63.09	60.96	13	28	6-146505-4
▲	2.484	2.400	12	26	6-146505-3
▲	60.55	58.42	11	24	6-146505-2
▲	2.384	2.300	10	22	6-146505-1
▲	58.01	55.88	9	20	6-146505-0
▲	2.284	2.200	8	18	5-146505-9
▲	55.47	53.34	7	16	5-146505-8
▲	2.184	2.100	6	14	5-146505-7
▲	52.93	50.80	5	12	5-146505-6
▲	2.084	2.000	4	10	5-146505-5
▲	50.39	48.26	3	8	5-146505-4
▲	1.984	1.900	2	6	5-146505-3
▲	47.85	45.72	1	4	5-146505-2
▲	1.784	1.700	-	2	5-146505-1
▲	45.31	43.18	-	-	-
▲	42.77	40.64	-	-	-
▲	1.684	1.600	-	-	-
▲	40.23	38.10	-	-	-
▲	1.584	1.500	-	-	-
▲	37.69	35.56	-	-	-
▲	1.484	1.400	-	-	-
▲	35.15	33.02	-	-	-
▲	1.384	1.300	-	-	-
▲	32.61	30.48	-	-	-
▲	1.284	1.200	-	-	-
▲	30.07	27.94	-	-	-
▲	1.184	1.100	-	-	-
▲	27.53	25.40	-	-	-
▲	1.084	1.000	-	-	-
▲	24.99	22.86	-	-	-
▲	0.984	0.900	-	-	-
▲	22.45	20.32	-	-	-
▲	0.884	0.800	-	-	-
▲	19.91	17.78	-	-	-
▲	0.784	0.700	-	-	-
▲	17.37	15.24	-	-	-
▲	0.684	0.600	-	-	-
▲	14.83	12.70	-	-	-
▲	0.584	0.500	-	-	-
▲	12.29	10.16	-	-	-
▲	0.484	0.400	-	-	-
▲	9.75	7.62	-	-	-
▲	0.384	0.300	-	-	-
▲	7.21	5.08	-	-	-
▲	0.284	0.200	-	-	-
▲	4.67	2.54	-	-	-
▲	0.184	0.100	-	-	-
▲	2.13	0.00	-	-	-
▲	0.084	0.00	-	-	-

PLATING	G	F	E	NO. OF POSITIONS	PART NUMBER
▲	101.19	99.06	39	80	4-146505-0
▲	3.984	3.900	38	78	3-146505-9
▲	3.884	3.800	37	76	3-146505-8
▲	3.784	3.700	36	74	3-146505-7
▲	93.57	91.44	35	72	3-146505-6
▲	3.684	3.600	34	70	3-146505-5
▲	91.03	88.90	33	68	3-146505-4
▲	3.584	3.500	32	66	3-146505-3
▲	85.95	83.82	31	64	3-146505-2
▲	3.484	3.400	30	62	3-146505-1
▲	83.41	81.28	29	60	3-146505-0
▲	3.384	3.300	28	58	2-146505-9
▲	80.87	78.74	27	56	2-146505-8
▲	3.284	3.200	26	54	2-146505-7
▲	78.33	76.20	25	52	2-146505-6
▲	3.084	3.000	24	50	2-146505-5
▲	75.79	73.66	23	48	2-146505-4
▲	2.984	2.900	22	46	2-146505-3
▲	73.25	71.12	21	44	2-146505-2
▲	2.884	2.800	20	42	2-146505-1
▲	70.71	68.58	19	40	2-146505-0
▲	2.784	2.700	18	38	1-146505-9
▲	68.17	66.04	17	36	1-146505-8
▲	2.684	2.600	16	34	1-146505-7
▲	65.63	63.50	15	32	1-146505-6
▲	2.584	2.500	14	30	1-146505-5
▲	63.09	60.96	13	28	1-146505-4
▲	2.484	2.400	12	26	1-146505-3
▲	60.55	58.42	11	24	1-146505-2
▲	2.384	2.300	10	22	1-146505-1
▲	58.01	55.88	9	20	1-146505-0
▲	2.284	2.200	8	18	146505-9
▲	55.47	53.34	7	16	146505-8
▲	2.184	2.100	6	14	146505-7
▲	52.93	50.80	5	12	146505-6
▲	2.084	2.000	4	10	146505-5
▲	50.39	48.26	3	8	146505-4
▲	1.984	1.900	2	6	146505-3
▲	47.85	45.72	1	4	146505-2
▲	1.784	1.700	-	2	146505-1
▲	45.31	43.18	-	-	-
▲	42.77	40.64	-	-	-
▲	1.684	1.600	-	-	-
▲	40.23	38.10	-	-	-
▲	1.584	1.500	-	-	-
▲	37.69	35.56	-	-	-
▲	1.484	1.400	-	-	-
▲	35.15	33.02	-	-	-
▲	1.384	1.300	-	-	-
▲	32.61	30.48	-	-	-
▲	1.284	1.200	-	-	-
▲	30.07	27.94	-	-	-
▲	1.184	1.100	-	-	-
▲	27.53	25.40	-	-	-
▲	1.084	1.000	-	-	-
▲	24.99	22.86	-	-	-
▲	0.984	0.900	-	-	-
▲	22.45	20.32	-	-	-
▲	0.884	0.800	-	-	-
▲	19.91	17.78	-	-	-
▲	0.784	0.700	-	-	-
▲	17.37	15.24	-	-	-
▲	0.684	0.600	-	-	-
▲	14.83	12.70	-	-	-
▲	0.584	0.500	-	-	-
▲	12.29	10.16	-	-	-
▲	0.484	0.400	-	-	-
▲	9.75	7.62	-	-	-
▲	0.384	0.300	-	-	-
▲	7.21	5.08	-	-	-
▲	0.284	0.200	-	-	-
▲	4.67	2.54	-	-	-
▲	0.184	0.100	-	-	-
▲	2.13	0.00	-	-	-
▲	0.084	0.00	-	-	-

THIS DRAWING IS A CONTROLLED DOCUMENT. (11-2007-04)

INSTRUCTIONS: (11-2007-04) **TE Connectivity**
 DIMENSIONS: (11-2007-04) **TE Connectivity**
 HEADERS ASSEMBLY, MOD II, STACKING, DOUBLE ROW, 0.025 SQ. POST, UNSHROUDED

SIZE: 00779 (G=146505) PART NUMBER: 146505-9
 CUSTOMER DRAWING: 4.1