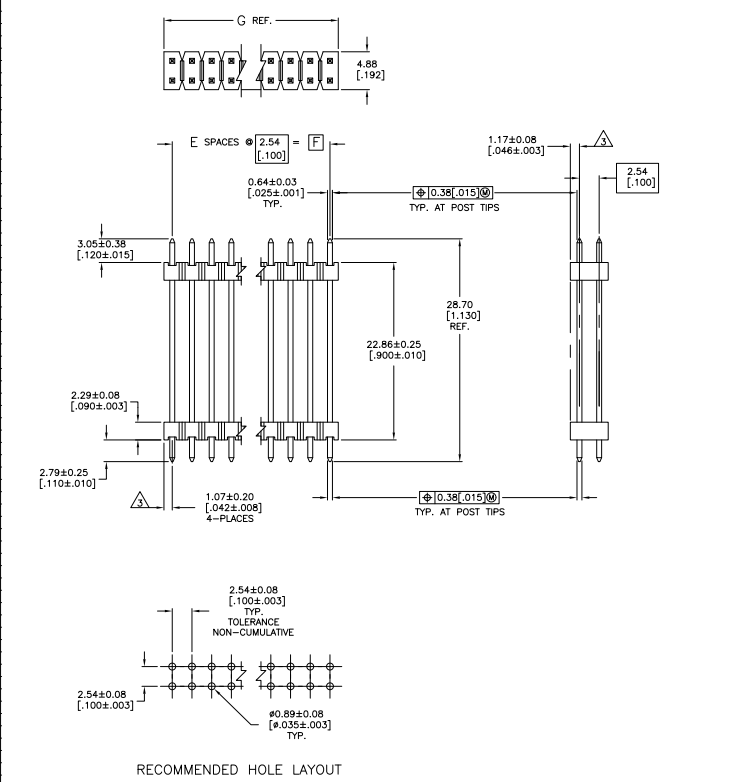


THIS DRAWING IS UNAPPROVED
 ALL RIGHTS RESERVED

REV	DATE	DESCRIPTION	BY	CHK
AD 39		REVISED PER EDD-11-004917		



RECOMMENDED HOLE LAYOUT

- ASSEMBLY MAY BE BROKEN TO THE DESIRED NUMBER OF POSITIONS
 - TRUE POSITION TOLERANCE OF THE POST TIPS APPLIES WHEN THE HEADER IS HELD FLAT AGAINST THE PRINTED CIRCUIT BOARD
- △ THE NOTED DIMENSIONS APPLY AT THE INTERSECTION OF THE POST AND HOUSING
 △ HOUSING: FLAME RETARDANT THERMOPLASTIC; COLOR: BLACK.
 △ FINISH: 0.00254-0.00508 [0.00100-0.00200] BRIGHT TIN-LEAD OVER 0.00127 [0.00050] NICKEL ENTIRE POST.
 △ FINISH: 0.00254-0.00508 [0.00100-0.00200] MATTE TIN OVER 0.00127 [0.00050] NICKEL ENTIRE POST.

PLATING	G	F	E	NO. OF POSITIONS	PART NUMBER	
△	101.19	99.06		39	80	9-146499-0
△	98.65	96.52		38	78	8-146499-9
△	96.11	93.98		37	76	8-146499-8
△	93.57	91.44		36	74	8-146499-7
△	91.03	88.90		35	72	8-146499-6
△	88.49	86.36		34	70	8-146499-5
△	85.95	83.82		33	68	8-146499-4
△	83.41	81.28		32	66	8-146499-3
△	80.87	78.74		31	64	8-146499-2
△	78.33	76.20		30	62	8-146499-1
△	75.79	73.66		29	60	8-146499-0
△	73.25	71.12		28	58	7-146499-9
△	70.71	68.58		27	56	7-146499-8
△	68.17	66.04		26	54	7-146499-7
△	65.63	63.50		25	52	7-146499-6
△	63.09	60.96		24	50	7-146499-5
△	60.55	58.42		23	48	7-146499-4
△	58.01	55.88		22	46	7-146499-3
△	55.47	53.34		21	44	7-146499-2
△	52.93	50.80		20	42	7-146499-1
△	50.39	48.26		19	40	7-146499-0
△	47.85	45.72		18	38	6-146499-9
△	45.31	43.18		17	36	6-146499-8
△	42.77	40.64		16	34	6-146499-7
△	40.23	38.10		15	32	6-146499-6
△	37.69	35.56		14	30	6-146499-5
△	35.15	33.02		13	28	6-146499-4
△	32.61	30.48		12	26	6-146499-3
△	30.07	27.94		11	24	6-146499-2
△	27.53	25.40		10	22	6-146499-1
△	24.99	22.86		9	20	6-146499-0
△	22.45	20.32		8	18	5-146499-9
△	19.91	17.78		7	16	5-146499-8
△	17.37	15.24		6	14	5-146499-7
△	14.83	12.70		5	12	5-146499-6
△	12.29	10.16		4	10	5-146499-5
△	9.75	7.62		3	8	5-146499-4
△	7.21	5.08		2	6	5-146499-3
△	4.67	2.54		1	4	5-146499-2
△	2.13	-		-	2	5-146499-1

PLATING	G	F	E	NO. OF POSITIONS	PART NUMBER	
△	101.19	99.06		39	80	4-146499-0
△	98.65	96.52		38	78	3-146499-9
△	96.11	93.98		37	76	3-146499-8
△	93.57	91.44		36	74	3-146499-7
△	91.03	88.90		35	72	3-146499-6
△	88.49	86.36		34	70	3-146499-5
△	85.95	83.82		33	68	3-146499-4
△	83.41	81.28		32	66	3-146499-3
△	80.87	78.74		31	64	3-146499-2
△	78.33	76.20		30	62	3-146499-1
△	75.79	73.66		29	60	3-146499-0
△	73.25	71.12		28	58	2-146499-9
△	70.71	68.58		27	56	2-146499-8
△	68.17	66.04		26	54	2-146499-7
△	65.63	63.50		25	52	2-146499-6
△	63.09	60.96		24	50	2-146499-5
△	60.55	58.42		23	48	2-146499-4
△	58.01	55.88		22	46	2-146499-3
△	55.47	53.34		21	44	2-146499-2
△	52.93	50.80		20	42	2-146499-1
△	50.39	48.26		19	40	2-146499-0
△	47.85	45.72		18	38	1-146499-9
△	45.31	43.18		17	36	1-146499-8
△	42.77	40.64		16	34	1-146499-7
△	40.23	38.10		15	32	1-146499-6
△	37.69	35.56		14	30	1-146499-5
△	35.15	33.02		13	28	1-146499-4
△	32.61	30.48		12	26	1-146499-3
△	30.07	27.94		11	24	1-146499-2
△	27.53	25.40		10	22	1-146499-1
△	24.99	22.86		9	20	1-146499-0
△	22.45	20.32		8	18	146499-9
△	19.91	17.78		7	16	146499-8
△	17.37	15.24		6	14	146499-7
△	14.83	12.70		5	12	146499-6
△	12.29	10.16		4	10	146499-5
△	9.75	7.62		3	8	146499-4
△	7.21	5.08		2	6	146499-3
△	4.67	2.54		1	4	146499-2
△	2.13	-		-	2	146499-1

THIS DRAWING IS A CONTROLLED DOCUMENT. DATE: 11/20/04

DIMENSIONS: (mm INCHES)
 UNLESS OTHERWISE SPECIFIED:
 A: ALL DIMENSIONS
 B: DIMENSIONS
 C: DIMENSIONS
 D: DIMENSIONS
 E: DIMENSIONS
 F: DIMENSIONS
 G: DIMENSIONS
 H: DIMENSIONS
 I: DIMENSIONS
 J: DIMENSIONS
 K: DIMENSIONS
 L: DIMENSIONS
 M: DIMENSIONS
 N: DIMENSIONS
 O: DIMENSIONS
 P: DIMENSIONS
 Q: DIMENSIONS
 R: DIMENSIONS
 S: DIMENSIONS
 T: DIMENSIONS
 U: DIMENSIONS
 V: DIMENSIONS
 W: DIMENSIONS
 X: DIMENSIONS
 Y: DIMENSIONS
 Z: DIMENSIONS

CUSTOMER DRAWING: A1 00779 G=146499
 DATE: 11/20/04
 DRAWING NO: 00779 G=146499
 SHEET: 4/1 OF 1

TE Connectivity
 HEADER ASSEMBLY, MOD II,
 STACKING, DOUBLE ROW,
 0.25 SQ. POST, UNSHROUDED