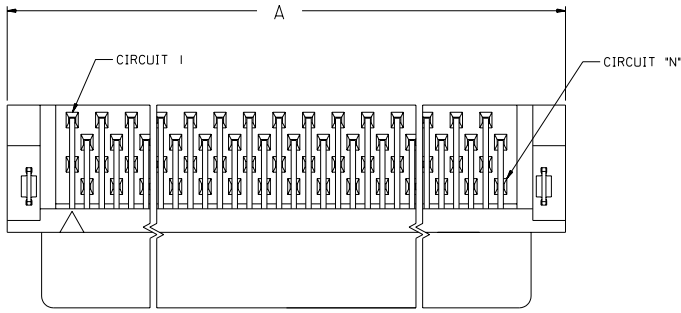
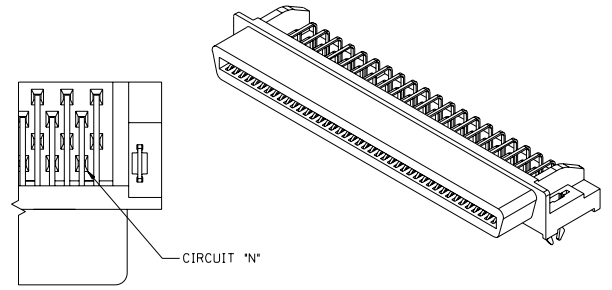


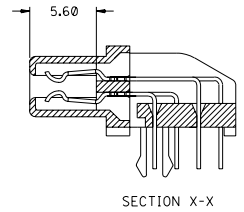
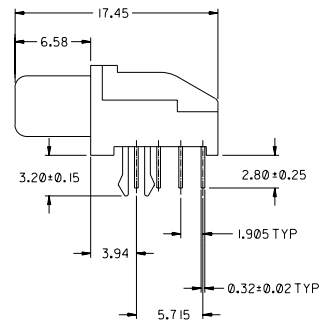
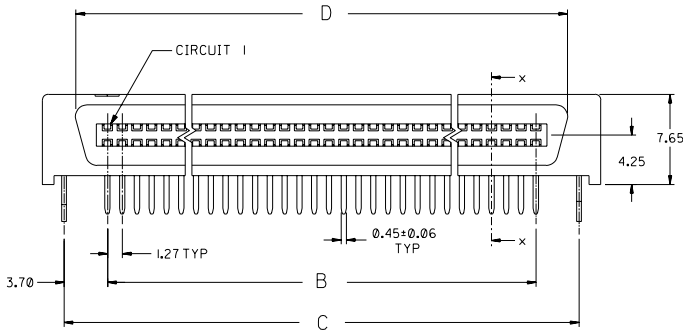
8 7 6 5 4 3 2 1



FOR CIRCUIT SIZES 68 AND 80 ONLY



FOR CIRCUIT SIZE 50 ONLY

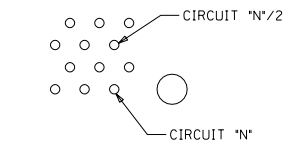
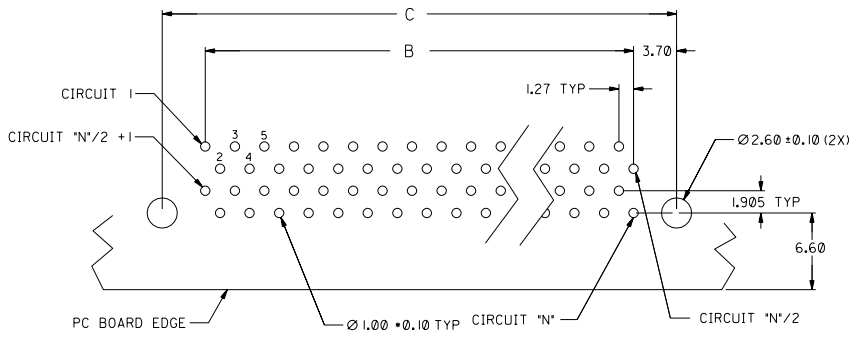


NOTES:

1. MATERIAL: HOUSING -- HIGH TEMP. THERMOPLASTIC, UL94-V0
TERMINALS -- COPPER ALLOY
2. PLATING:
 - 2A. 0.76µM MIN. GOLD IN SELECTIVE CONTACT AREA AND 2.54µM MIN. TIN-LEAD IN SOLDER TAIL AREA, BOTH OVER 1.27µM MIN. NICKEL.
 - 2B. 0.75µM MIN. GOLD IN SELECTIVE CONTACT AREA AND 2.5µM MIN. TIN IN SOLDER TAIL AREA, BOTH OVER 1.27µM MIN. NICKEL.
3. ASSEMBLY MATES WITH MOLEX P/N 71661-0000.
4. RECOMMENDED P.C. BOARD THICKNESS IS 1.60MM.
5. PRODUCT SPEC. NO. : PS-87552-006
6. SEE TABLE ON SHEET 2 FOR ASSEMBLY PART NUMBERS.

ADD TIN PLATED OPTION EC NO. S2004-0161 DRWN: KSEE 030930 CHYK: KCLING 030930 APPR: SKTOH 030930	QUALITY SYMBOLS MAJOR CRITICAL	GENERAL TOLERANCES: (UNLESS SPECIFIED)		SCALE 3:1	DESIGN UNITS	THIRD ANGLE PROJECTION	DIMENSIONS:		2	G1	
			mm	INCH	<input checked="" type="checkbox"/> mm <input type="checkbox"/> INCH	<input type="checkbox"/> mm <input checked="" type="checkbox"/> INCH	<input type="checkbox"/> mm ONLY	SHT	REV		
		4 PLACES	±0. -	±. -	DRAWN BY & DATE	TITLE:					
		3 PLACES	±0. -	±. -	CHECKED BY & DATE	ASSY, 1.27mm PITCH, R/A EBBI RECEIPT					
	2 PLACES	±0.30	±. -	APPROVED BY & DATE	MOLEX INCORPORATED						
	1 PLACE	±0. -	±. -	CAD FILENAME	MATERIAL NO.	DRAWING NO.	SHEET NO.		REVISE ON CAD ONLY		
		ANGULAR: ±	3°	S87552AA.S01	SEE CHART	SD-87552-007	1 OF 2		SIZE A3		
THIS DRAWING CONTAINS INFORMATION THAT IS PROPRIETARY TO MOLEX INCORPORATED AND SHOULD NOT BE USED WITHOUT WRITTEN PERMISSION.											

8	7	6	5	4	3	2	1
D	C	B	A	CKT SIZE	ASSEMBLY PART NUMBER (TIN/LEAD)	ASSEMBLY PART NUMBER (TIN)	
36.02	37.88	30.48	41.70	50	87552-0501	87552-0507	
47.45	49.31	41.91	53.13	68	87552-0681	87552-0687	
55.07	56.93	49.53	60.75	80	87552-0801	87552-0807	



RECOMMENDED PC BOARD LAYOUT COMPONENT SIDE
(FOR CIRCUIT SIZES 68 AND 80 ONLY)

(FOR CIRCUIT SIZE 50 ONLY)

ADD TIN PLATED OPTION EC NO. S2004-0161 DRWH: KSEF 030530 CHK: KCLING 030530 APPR: SKTOH 030530	QUALITY SYMBOLS MAJOR = 0 CRITICAL = 0	GENERAL TOLERANCES: (UNLESS SPECIFIED)		SCALE 3:1	DESIGN UNITS <input checked="" type="checkbox"/> mm <input type="checkbox"/> INCH	THIRD ANGLE PROJECTION <input checked="" type="checkbox"/>	DIMENSIONS: <input type="checkbox"/> mm <input type="checkbox"/> INCH <input checked="" type="checkbox"/> mm ONLY		SHT	REV	
		4 PLACES ±0. -	±. -	DRAWN BY & DATE D SOH 970401	TITLE: ASSY, 1.27mm PITCH, R/A EBBI RECEIPT						
G1	DESCRIPTION	3 PLACES ±0. -	±. -	CHECKED BY & DATE KC LING 970506	APPROVED BY & DATE SK TOH 970508			MATERIAL NO. SEE CHART		DRAWING NO. SD-87552-007	SHEET NO. 2 OF 2
		2 PLACES ±0.30	±. -	CAD FILENAME S87552AA.S01			MATERIAL NO. SEE CHART		DRAWING NO. SD-87552-007	SHEET NO. 2 OF 2	SIZE A3
		1 PLACE ±0. -	±. -	THIS DRAWING CONTAINS INFORMATION THAT IS PROPRIETARY TO MOLEX INCORPORATED AND SHOULD NOT BE USED WITHOUT WRITTEN PERMISSION.							

WBORD_A.BOR REV A
97/05/14 LEVEL 4