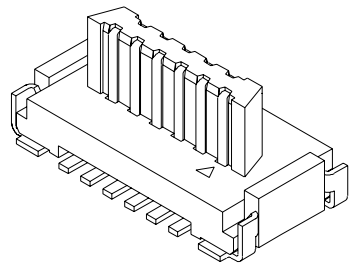
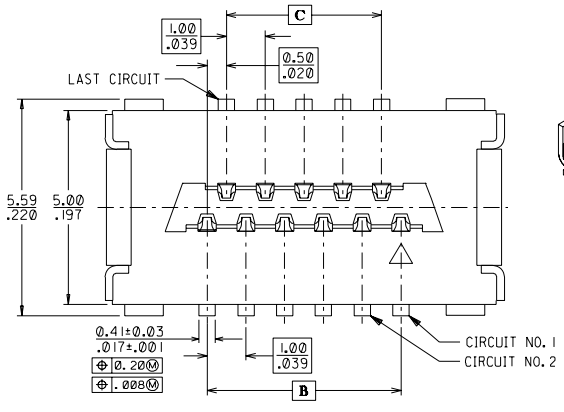
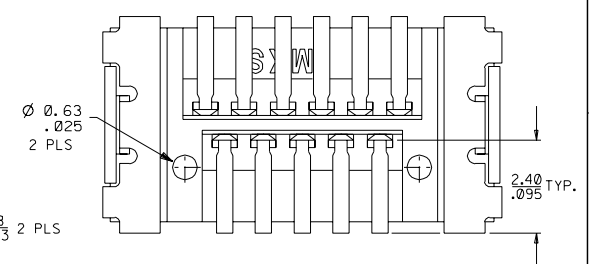
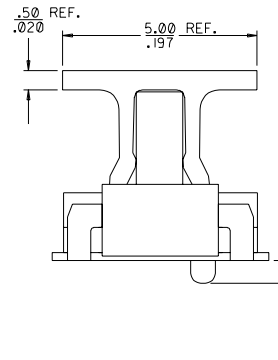
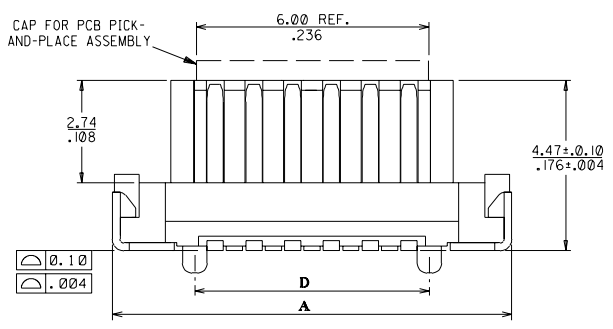


DWG. NO. SD- 87436-\*\*\*5  
 CAD FILE S87436C.LDGN

8 7 6 5 4 3 2 1



- NOTES:-
- MATERIALS : HOUSING - GLASS-FILLED LIQUID CRYSTAL POLYMER (LCP), COLOR: BEIGE, UL FLAMMABILITY RATING V-0  
 COVER - GLASS-FILLED LIQUID CRYSTAL POLYMER (LCP), COLOR: BLACK, UL FLAMMABILITY RATING V-0  
 INSERTS - COPPER ALLOY  
 TERMINALS - COPPER ALLOY
  - FINISH : INSERTS - TIN LEAD ALLOY (SNPB) OVER NICKEL.  
 TERMINALS - SELECTIVE GOLD (AU) 0.76 MICRONS (3 MICRO-INCHES) MINIMUM IN THE CONTACT AREA.  
 SELECTIVE TIN LEAD ALLOY (SNPB) ON THE PC TAILS. NICKEL (NI) UNDERCOAT OVERALL.
  - PRODUCT SPECIFICATION : PS - 87433 - 0001
  - PART NO. LEGEND : 8 7 4 3 6 - \* \* \* 5  
 CIRCUIT SIZE  
 05 - 9 CIRCUITS 21 - 41 CIRCUITS  
 06 - 11 CIRCUITS 26 - 51 CIRCUITS  
 08 - 15 CIRCUITS 35 - 69 CIRCUITS  
 11 - 21 CIRCUITS  
 13 - 25 CIRCUITS  
 16 - 31 CIRCUITS  
 POLARIZING POSTS, PICK-AND-PLACE COVER, AND PACKAGING OPTIONS :  
 2 - NO POSTS, NO COVER, TUBE PACKAGING  
 3 - TWO POSTS, NO COVER, TUBE PACKAGING  
 4 - NO POSTS, WITH COVER, TUBE PACKAGING  
 5 - TWO POSTS, WITH COVER, TUBE PACKAGING  
 6 - NO POSTS, NO COVER, EMBOSSED TAPE AND REEL  
 7 - TWO POSTS, NO COVER, EMBOSSED TAPE AND REEL  
 8 - NO POSTS, WITH COVER, EMBOSSED TAPE AND REEL  
 9 - TWO POSTS, WITH COVER, EMBOSSED TAPE AND REEL



DO NOT SCALE DRAWING

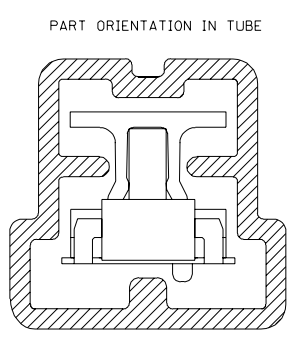
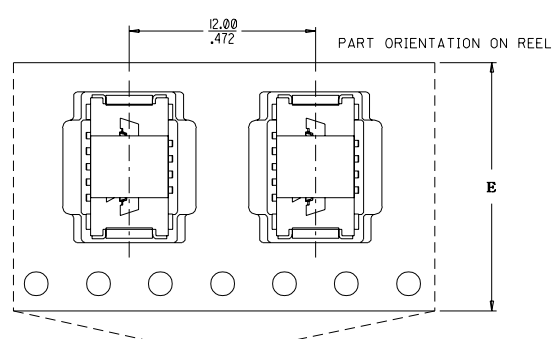
B1	REVISED PER ECR*S2002-0349	---	PSIAN	020206	MATERIAL : PLEASE REFER TO NOTE 1.	MOLEX SINGAPORE PTE LTD SHEET 1 OF 2
B	REVISED PER ECR*S1999-0415	---	PSIAN	990429		
A3	REVISED PER ECR*S1998-0211	---	PSIAN	971021		
A2	REVISED PER ECR*	S70230	PSIAN	961109	FINISH : PLEASE REFER TO NOTE 2.	GENERAL TOLERANCES * 0.20/.008 REV B1 DWG. NO.: SD- 87436-***5
A1	REVISED PER ECR*	S70065	PSIAN	960802		
A	REVISED PER ECR*	S60569	PSIAN	960529		
2	REVISED PER ECR*	S60455	PSIAN	960325		
1	PRELIMINARY RELEASE	S5-587	PSIAN	950602		
LTR	REVISION RECORD	ECN	DR	CHK	DATE	
REVISE ONLY ON CAD SYSTEM					DRAWN BY 950427 GMSimmel	CHK'D BY
					APPR'D BY	SCALE

THIS DRAWING CONTAINS INFORMATION THAT IS PROPRIETARY TO MOLEX (S) PTE LTD AND SHOULD NOT BE USED WITHOUT WRITTEN PERMISSION

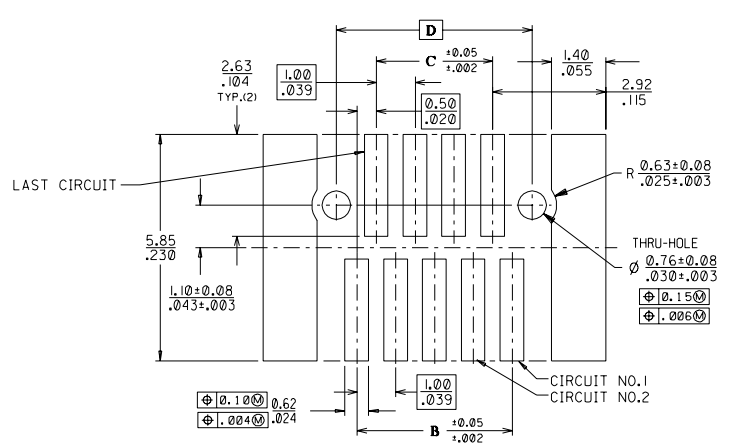
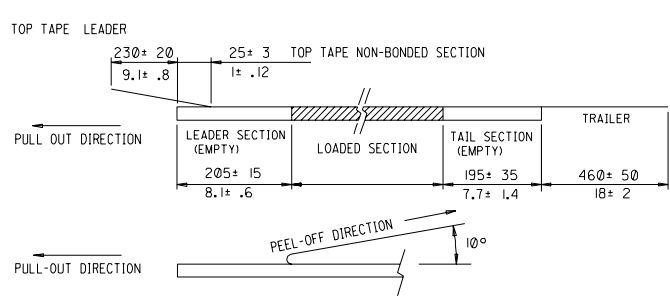
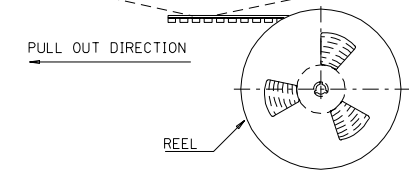
CAD FILE  
S87436C2.DGN

DO NOT SCALE DRAWING

TAPE AND REEL WIDTHS AND HOLE DIMENSIONS CONFORM TO EIA-481 STANDARDS.



PART NO.	CKT. SIZE	PART QTY. PER REEL	DIMENSIONS				
			A	B	C	D	E
87436-05*5	9	800	9.30 .366	4.00 .157	3.00 .118	5.05 .199	24.00 .945
87436-06*5	11	800	10.30 .406	5.00 .197	4.00 .157	6.05 .238	24.00 .945
87436-08*5	15	800	12.30 .484	7.00 .276	6.00 .236	8.05 .317	24.00 .945
87436-11*5	21	800	15.30 .602	10.00 .394	9.00 .354	11.05 .435	24.00 .945
87436-13*5	25	800	17.30 .681	12.00 .472	11.00 .433	13.05 .514	32.00 1.260
87436-16*5	31	800	20.30 .799	15.00 .591	14.00 .551	16.05 .632	44.00 1.732
87436-21*5	41	800	25.30 .996	20.00 .787	19.00 .748	21.05 .829	44.00 1.732
87436-26*5	51	800	30.30 1.193	25.00 .984	24.00 .945	26.05 1.026	44.00 1.732
87436-35*5	69	800	39.30 1.547	34.00 1.339	33.00 1.299	35.05 1.380	56.00 2.205



RECOMMENDED PCB PAD AND HOLE LAYOUT

MM  
INCH

				MATERIAL : SEE SHEET 1		MOLEX SINGAPORE PTE LTD SHEET 2 OF 2	
				FINISH : SEE SHEET 1		GENERAL TOLERANCES ± 0.20/.008 REV B1	
				DRAWN BY GMSimmel		DWG. NO.: SD-1 87436-***5	
				APPR'D BY		TITLE : 1mm BOARD-TO-BOARD SMT PLUG CONNECTOR ASSEMBLY (5mm)	
LTR	REVISION RECORD	ECN	DR CHK	DATE	950427	CHK'D BY	SCALE

THIS DRAWING CONTAINS INFORMATION THAT IS PROPRIETARY TO MOLEX (S) PTE LTD AND SHOULD NOT BE USED WITHOUT WRITTEN PERMISSION