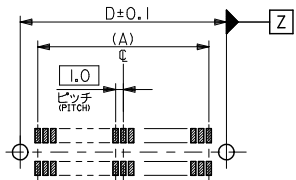
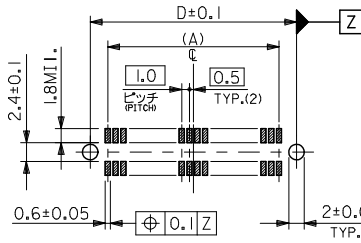
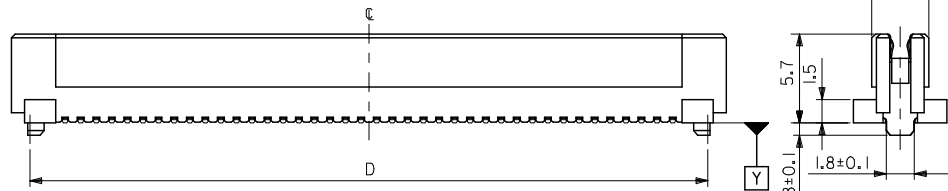
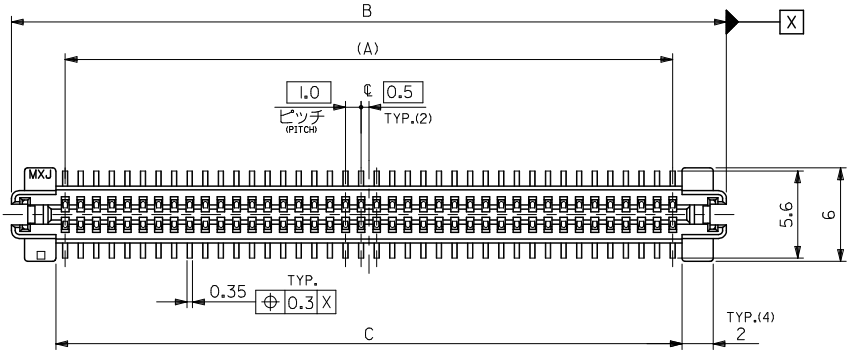
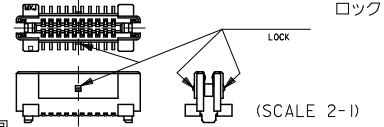


10 9 8 7 6 5 4 3 2 1



注) NOTES

1. 材質 MATERIAL
ハウジング: ガラス入りLCP、白色、UL94V-0
HOUSING: GLASS F.LCP, WHITE, UL94V-0
ターミナル: 燐青銅 (t=0.2)
TERMINAL: PHOSPHOR BRONZE
2. メッキ仕様 PLATING
接点部: 金メッキ0.25µmMIN.
CONTACT AREA: GOLD 0.25µmMIN.
半田付け部: 半田メッキ1.0µmMIN.
SOLDER TAIL AREA: TIN-LEAD 1.0µmMIN.
下地メッキ: ニッケルメッキ2.0µmMIN.
UNDER-PLATING: NICKEL 2.0µmMIN.
3. 推奨基板厚 RECOMMENDED PCB THICKNESS
1.0±0.1mm MIN.
4. テールのバラツキ寸法 TAIL COPLANARITY
テールは、Y面を基準とし、上へ0.02下へ0.15の範囲にあり、目付テール平坦度は0.15とする。
TAILS TO BE WITHIN 0.02 UPWARD AND 0.15 DOWNWARD FROM Y-DATUM PLANE, AND TAIL COPLANARITY TO BE 0.15.
5. ロックは、20, 34, 50極に設置する。
LOCK TO BE ADDED TO 20, 34 AND 50 CKTS.



6. 梱包 PACKING
本製品はスティック梱包とし、梱包後のENG. NO. は52584-***9とする。
THIS PRODUCTS TO BE PACKED IN TUBE. ENG. NO. 52584-***9
7. 同基板内に複数個(2ヶ以上)の使用は避けてください。
DO NOT RECOMMEND THE USAGE OF TWO OR MORE OF THESE CONNECTORS BETWEEN A SINGLE PAIR OF P.C.B. BOARD.

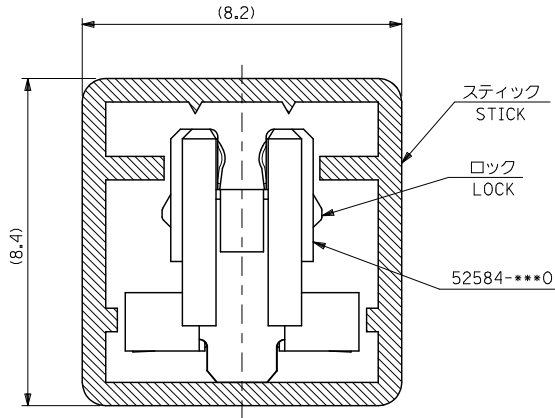
| | | | | | |
|------|------|------|-----|------------|--------------------|
| 73.5 | 70.2 | 75.9 | 69 | 52584-1400 | 140 |
| 63.5 | 60.2 | 65.9 | 59 | 52584-1200 | 120 |
| 36.5 | 33.2 | 38.9 | 32 | 52584-0660 | 66 |
| 33.5 | 30.2 | 35.9 | 29 | 52584-0600 | 60 |
| 28.5 | 25.2 | 30.9 | 24 | 52584-0500 | 50 |
| 20.5 | 17.2 | 22.9 | 16 | 52584-0340 | 34 |
| 13.5 | 10.2 | 15.9 | 9 | 52584-0200 | 20 |
| D | C | B | (A) | ENG. NO. | 極数 NO. OF CKTS. |

推奨基板寸法 (20, 60, 80, 84, 100, 120, 140極)
RECOMMENDED PCB PATTERN LAYOUT (20,60,80,84,100,120,140 CKTS.)
(SCALE 2-1)

推奨基板寸法 (34, 50, 66極)
RECOMMENDED PCB PATTERN LAYOUT (34,50,66 CKTS.)
(SCALE 2-1)

| | | | | | | |
|---|---------------------------------------|------------|----------------------------|--------------|---|------------------------|
| REVISED EC NO: J DRAWN BY: YOSHIDAM 2008/11/06 CHKD: THARUYAMA 2009/03/23 APPR: THARUYAMA 2009/03/25 | GENERAL TOLERANCES (UNLESS SPECIFIED) | | DIMENSION STYLE MM ONLY | SCALE 4:1 | DESIGN UNITS METRIC | THIRD ANGLE PROJECTION |
| | 10 UNDER | ±0.2 | DRAWN BY J. MIYAZAWA | DATE | TITLE 1.0 B-T-O-B S/T REC. HSG ASSY | |
| | 10 OVER 30 UNDER | ±0.25 | CHECKED BY M. SASAO | DATE | MOLEX INCORPORATED DOCUMENT NO. SD-52584-009 | |
| | 30 OVER | ±0.3 | APPROVED BY H. IKESUGI | DATE | | |
| | ANGULAR | ±3° | MATERIAL NO. | SEE TABLE | THIS DRAWING CONTAINS INFORMATION THAT IS PROPRIETARY TO MOLEX INCORPORATED AND SHOULD NOT BE USED WITHOUT WRITTEN PERMISSION | |
| DRAFT WHERE APPLICABLE MUST REMAIN WITHIN DIMENSIONS | | SIZE A3 | | | | |

10 9 8 7 6 5 4 3 2 1



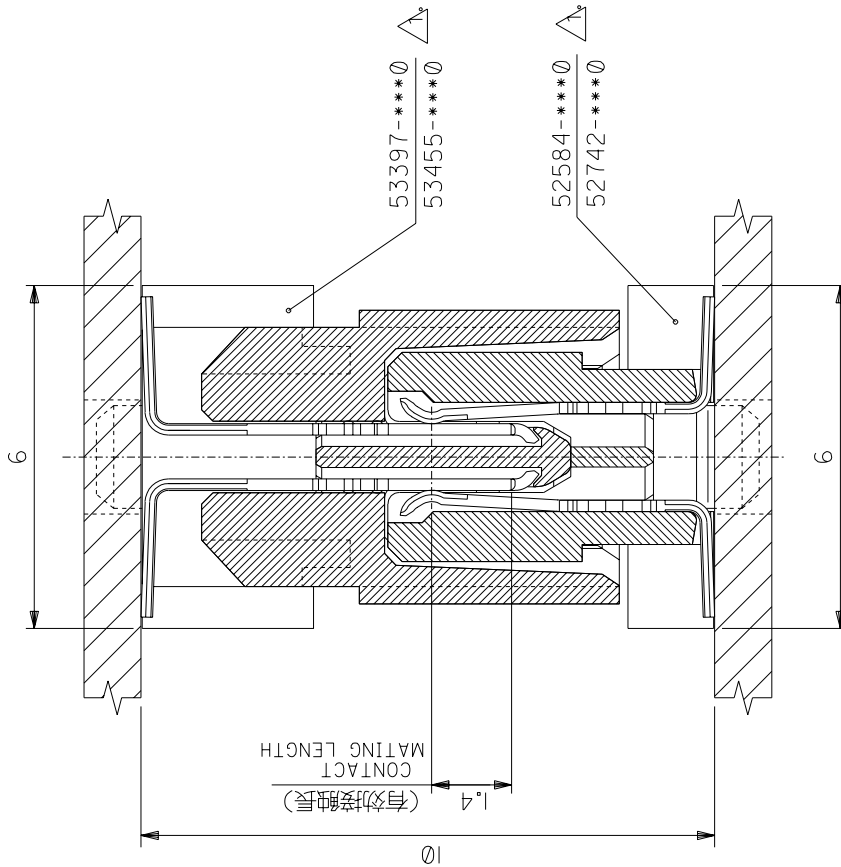
注記
NOTES

1. スティック両端はキャップ止め。
BOTH ENDS WITH CAPS.
2. 全 長: 600±2
TOTAL LENGTH
3. 肉 厚: 0.6±0.2
THICKNESS
4. ロックは、20, 34, 50極に設置。
LOCK TO BE ADDED TO 20, 34
AND 50 CKTS.

| | | |
|----------------|------------|--------------------|
| 8 | 52584-1209 | 120 |
| 24 | 52584-0349 | 34 |
| 極数 QUANTITY | ENG. No. | 極数 NO. OF CKTS. |

| | | | | | | | | | | |
|---|--------|-------------|---------------------------------------|--------------|----------------------------|--------------|--|------------------------|------------------------|--|
| REVISED | EC NO: | 2008/11/07 | GENERAL TOLERANCES (UNLESS SPECIFIED) | | DIMENSION STYLE MM ONLY | | SCALE 10:1 | DESIGN UNITS METRIC | THIRD ANGLE PROJECTION | |
| | DRW: | J. MIYAZAWA | 10 UNDER | ± --- | DRAWN BY DATE | | TITLE 52584-***0 STICK PACKAGING | | | |
| | CHK: | H. IKESUGI | 10 OVER 30 UNDER | ± --- | CHECKED BY DATE | | | | | |
| | APP: | S. YAMADA | 30 OVER | ± --- | APPROVED BY DATE | | MOLEX INCORPORATED | | | |
| REV: | | ANGULAR | ± --- ° | MATERIAL NO. | | DOCUMENT NO. | | | | |
| DRAFT WHERE APPLICABLE MUST REMAIN WITHIN DIMENSIONS | | | SEE TABLE | | SD-52584-010 | | 1 OF 1 | | | |
| THIS DRAWING CONTAINS INFORMATION THAT IS PROPRIETARY TO MOLEX INCORPORATED AND SHOULD NOT BE USED WITHOUT WRITTEN PERMISSION | | | | | | | | | | |

DWG. NO.
SD-53397-***0/52584-***0
SD-53455-***0/52742-***0



注記
NOTES

- △ 53397-***0 } ネール無し品
52584-***0 } WITHOUT NAIL
- 53455-***0 } ネール有り品
52742-***0 } WITH NAIL

| | | |
|-------|-------|-------|
| 角度 | ANGLE | ±3° |
| 30°以上 | OVER | ±0.3 |
| 10°以上 | OVER | ±0.25 |
| 10°未満 | UNDER | ±0.2 |
| 一般公差 | | |

B DIMENSIONS IN METRIC DO NOT SCALE DRAWING

| | | | |
|-------------------|-----------------|-------------------------------------|----------|
| 材料 MATERIAL | | MOLEX-JAPAN CO.,LTD. 日本モレックス株式会社 | |
| 仕上げ FINISH | | — | |
| 適用電線範囲 WIRE RANGE | | — | |
| 被覆外径 INS. RANGE | | — | |
| 変更 (1740044) | 5/21 J.M. | 194/01/27 | CHK'D BY |
| 新規作成 (1720452) | J.M. | 92/10/27 | CHK'D BY |
| 記号 LTR | REVISION RECORD | DR. DATE | SCALE |
| | | | 10-1 |

A : MM
ZFC110.0313MSG33970.DGN

THIS DRAWING CONTAINS INFORMATION THAT IS PROPRIETARY TO MOLEX(JAPAN) AND SHOULD NOT BE USED WITHOUT WRITTEN PERMISSION
本図面は日本モレックス(株)の所有する情報を含むもので、当社の許可なく複製を禁止する。
EN-01C(032)MX1-33