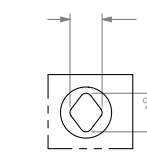
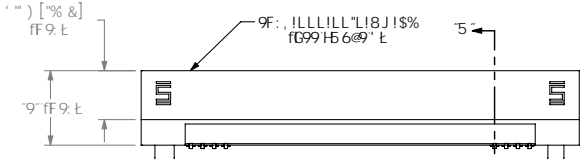
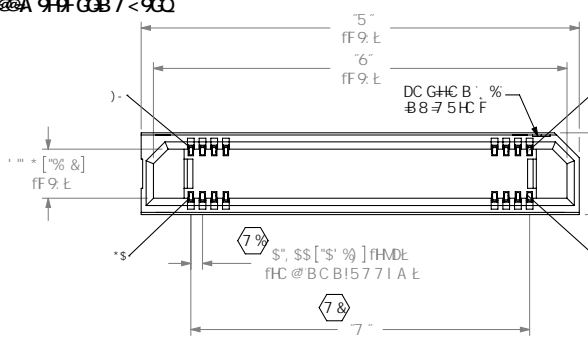


F9J G€ B @

89G B98 / 8A 9BGC B98
B A @A 9F9GB7 < 900

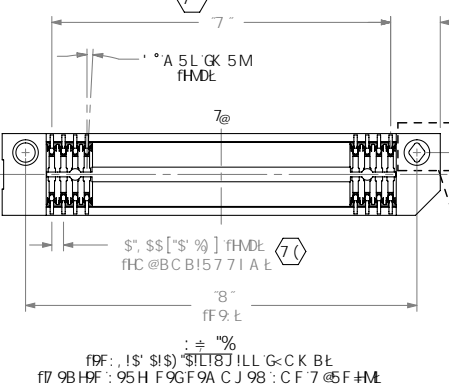
8C BCH
G75 @ FCA
K: GDF BH



89F5 @ 8F fi
G75 @) . %

No. OF POS.	
-005, -010, -011, -013, -020, -025, -023 -030	0.10 [.004]
**035, -040, -049, -050, -060	0.12 [.005]
-070, -075, **100	0.15 [.006]

STACK HEIGHT		ERM8 LEAD STYLE		
ERF8 LEAD STYLE		-02.0	-05.0	**09.0
-05.0	7.0MM	10.0MM	14.0MM	
-07.0	9.0MM	12.0MM	16.0MM	

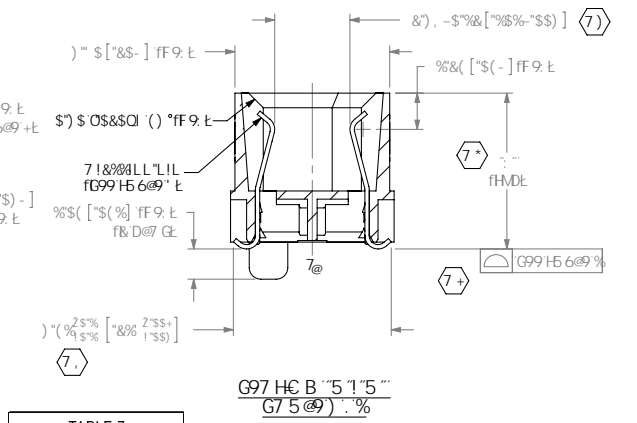
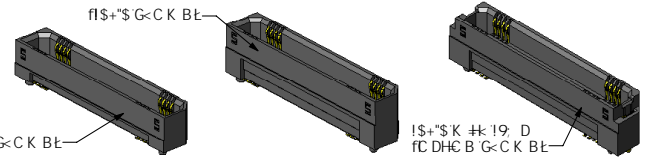


9F: , !LLL!LL!L!L!8J!LLL

Bc C: DC GHC BG
TDF FCK E

C DHC B
I? DC @M5A -89: @A D58
HF: H5D9 / F99@
!@ @H7 < 9G F99 B C H9) L
H !G@ GE I 99N9 @5H7 <
..... F99 B C H9) / : ± * L
19: D 9L H8 B 98 : I -89 DC GH
..... F99 B C H9 * L

F C K @97 ± 7 5HC B
18J . 8C1 6@J 9FH7 5@
H 1 BC HF9@5 G98 : C F DFC 81 7 HC B



OPTION	"N"
NONE	3.40 [.134]
-L	4.15 [.163]

BC HG

%) F9DF99BHG5 7F H7 5@8 A 9BGC B"
& * 6I FF 5@C K 5B7 9. \$S', OSS%) QA 5L"
** A B A I A DI G-C I H: CF7 9. && B O) @5"O
(*D5FHGC 69D57 75: 98 B HF5M2I B@GG
...HF C DHC B: @GD97 ± 90"
) * C DHC B C B @M5 J 5 @5 @C B 1 S' \$ @58 GM@9"
** C DHC B C B @M5 J 5 @5 @C B 1 S+ \$ @58 GM@9 5 @C 1@ / 16@
*** C DHC BGC B H5 J 5 @5 @C B 7 CA 6B5HC B K # 19: DC DHC B"

I B @9G C H: 9K @9 @97 ± 982
8 A 9BGC BG5F9 B
A @9A 9F9GB7 < 900
HC @9F 5B7 9G 5F9.
897 A 5 @5
L L ± 5% OS%
L L L ± 5% OSS) O
L L L L ± 5% S OSS&S

DFC DF 9H5 FMBC H9
H: GBC T I A 9H7 C B E @G: C F A 5HC B
T C B @9H5 B 8 DFC DF @9H5 B
@A H97 2@7 * 588 G-5 @BCH69F9FC B I 7 98
C F H 58G 9F98 HC C H 9F 8C T I A 9HCCF
B 4F9C 898 HC C H 9G C F I 898: C F 5B M
D FDC 89C H 9F H 5B H 5HC - 2 < H K S G
C @5 8 98 K H C I H 8 9 L D F 9888 K F H 88
T C B BHC: @A H97 2@7

Samtec

8907 F DHC B.
\$' A A '98: 9F5H9GC 7?9H5 @9A 6@M

BK: "BC"

9F: , !LLL!LL!L!L!8J!LLL

6M ?BC K @89B - #&* #&\$) G-99H% C: '

: PBK : PA 67 PA _J(P9F: , !LLL!LL!L!L!8J!LLLIA ?H@B8FK

F9J GCB @

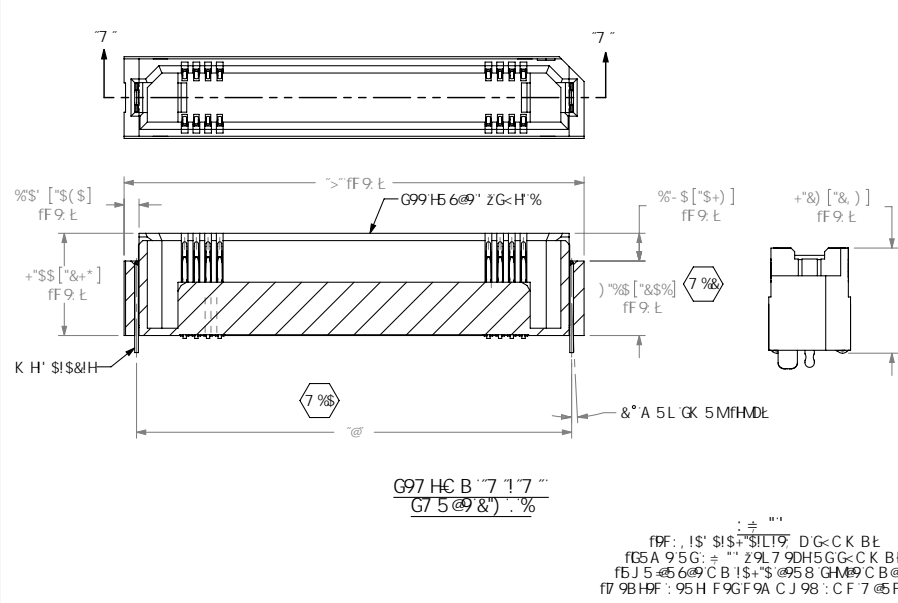
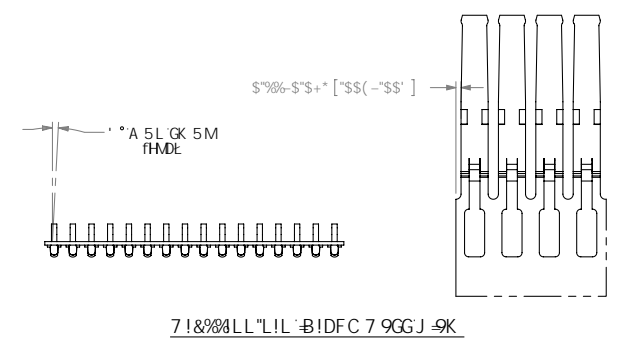
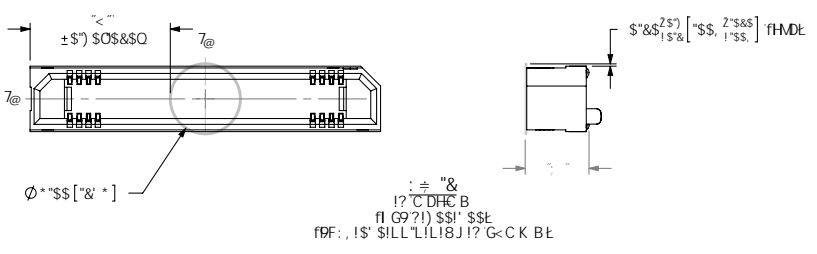


TABLE 4

POSITION	"A"	"B"	"C"	"D"	"H"
-005	10.00 [.394]	8.32 [.328]	3.200 [.1260]	6.80 [.268]	2.00 [.079]
-010	14.00 [.551]	12.32 [.485]	7.200 [.2835]	10.80 [.425]	4.00 [.157]
-011	14.80 [.583]	13.12 [.517]	8.000 [.3150]	11.60 [.457]	4.40 [.173]
-013	16.40 [.646]	14.72 [.580]	9.600 [.3780]	13.20 [.520]	5.20 [.205]
-020	22.00 [.866]	20.32 [.800]	15.200 [.5984]	18.80 [.740]	8.00 [.315]
-023	24.40 [.961]	22.72 [.894]	17.600 [.6929]	21.20 [.835]	10.40 [.409]
-025	26.00 [1.024]	24.32 [.957]	19.200 [.7559]	22.80 [.898]	10.00 [.394]
-030	30.00 [1.181]	28.32 [1.115]	23.200 [.9134]	26.80 [1.055]	12.00 [.472]
** -035	34.00 [1.339]	32.32 [1.272]	27.200 [1.071]	30.80 [1.213]	14.00 [.551]
-040	38.00 [1.496]	36.32 [1.423]	31.200 [1.2283]	34.80 [1.370]	16.00 [.630]
-049	45.20 [1.780]	43.52 [1.713]	38.400 [1.5118]	42.00 [1.654]	19.60 [.772]
-050	46.00 [1.811]	44.32 [1.745]	39.20 [1.543]	42.80 [1.685]	20.00 [.787]
-060	54.00 [2.126]	52.32 [2.060]	47.20 [1.858]	50.80 [2.000]	24.00 [.945]
-070	62.00 [2.441]	60.32 [2.375]	55.20 [2.173]	58.80 [2.315]	28.00 [1.102]
-075	66.00 [2.598]	64.32 [2.532]	59.20 [2.331]	62.80 [2.472]	30.00 [1.181]
** -100	86.00 [3.386]	84.32 [3.320]	79.20 [3.118]	82.80 [3.260]	40.00 [1.575]

III 1 B C H F 9 9 5 G 9 8 : C F
D F C B I 7 H C B E

TABLE 5

HEIGHT	"E"	"F"	"G"
-05.0	5.10 [.201]	5.335 [.2100]	5.52 [.217]
-07.0	7.00 [.275]	7.250 [.2835]	7.37 [.290]

TABLE 3

OPTION	STYLE	ERF8-XXX-XX.X-DV-XX	C-211-XX-X-X	WT-30-01-F
NONE	-05.0	ERF8-XXX-05.0-DV-01	C-211-05.0-X	N.A.
	-07.0	ERF8-XXX-07.0-DV-01	C-211-07.0-X	N.A.
-L	-05.0	ERF8-XXX-05.0-DV-L	C-211-05.0-X	WT-30-01-F
-SL	-05.0	ERF8-XXX-05.0-DV-SL	C-211-05.0-X	WT-30-01-F
-EGP	-07.0	ERF8-XXX-07.0-DV-EGP	C-211-07.0-X	WT-30-02-T

DFC DF 9 5 F M B C H D
K 4 B C 7 1 A 9 B H 7 C B 6 E G B : C F A 5 H C B
7 C B : 8 H 6 H 5 B 5 B D F C F 4 E F 1 M C
G A 1 H 7 2 8 7 : 5 B B G 5 M B C H 6 9 7 9 0 C B I 7 9 B
C F H 5 B 0 9 F 9 8 H C H 4 9 F B C 7 1 A 9 B H C F
8 6 7 4 0 9 H E C H 4 9 G C F 1 0 9 : C F 5 B M
D F D C 0 9 C H 4 9 H 5 B H 5 H K 4 7 4 H K 5 G
C 4 6 B 9 8 K 4 C 1 H K 9 8 D F 9 2 9 8 K F 4 H 8
7 C B 0 9 H C : G A 1 H 7 2 8 7

8 C : B C H G 7 5 8 9 8 F 5 K B :

G-99H G 7 5 8 9 8 & %

samtec

8 9 0 7 F 4 H C B :
\$ * , A A ' 9 8 : 9 F 5 H 9 G C 7 9 H 5 G 3 9 A 6 @ M

8 K : " B C "
9 F : , I L L L I L L " L I L ! 8 J I L L L

6 M ? B C K @ 8 9 B - # & * # & \$ \$) G - 9 9 H & C : '

: P 8 K : P A 6 7 P A J 1 P 9 F : , I L L L I L L I L L I B J I L L L I A ? H 6 B 8 F K

F9J GCB "@

CONTROL PLAN CRITICAL INSPECTION TABLE			
OPTION	ASSEMBLY OPERATION	START-UP INSPECTION CODE A	IN-PROCESS INSPECTION CODE B
ANY	CUT COMBS		C16,C17
NONE	FILL C-211-XX-X-X	C1,C2,C3,C4,C8,C18	C5,C6
-L & -SL	FILL WT-30-01-X & C-211-XX-X-X	C1,C2,C3,C4,C8,C9,C10,C12,C18,C19	C5,C6,C11
-EGP	FILL WT-30-02-X & C-211-XX-X-X	C1,C2,C3,C4,C8,C10,C12,C18,C19	C5,C6,C11
-K ONLY	APPLY KAPTON	C1,C2,C3,C4,C13,C14	
-L, -SL, -EGP w/ -K	APPLY KAPTON	C1,C2,C3,C4,C10,C12,C14,C15	C11

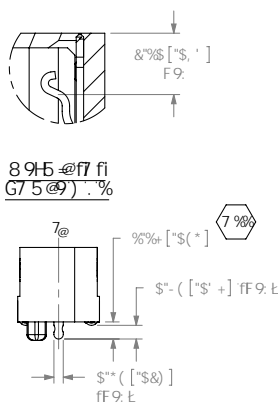
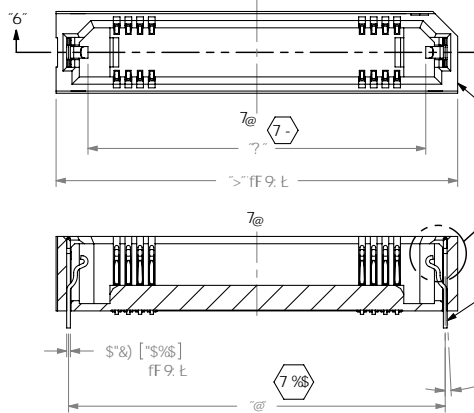
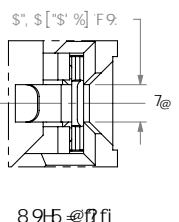
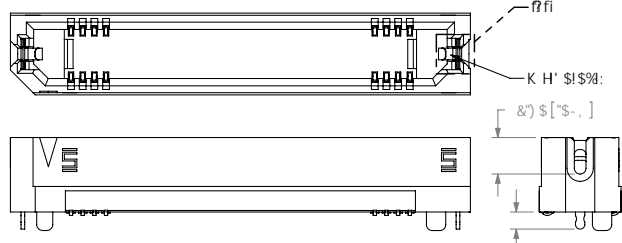


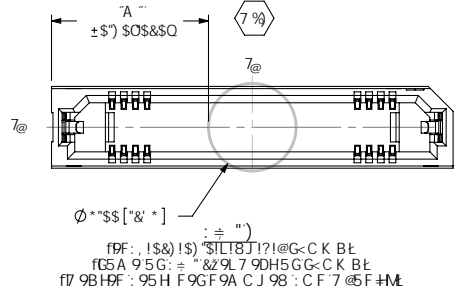
TABLE 6				
POSITION	"J"	"K"	"L"	"M"
-005	11.50 [.453]	7.13 [.281]	9.8 [.386]	2.75 [.108]
-010	15.50 [.610]	11.13 [.438]	13.8 [.543]	4.75 [.187]
-011	16.30 [.642]	11.93 [.470]	14.6 [.575]	5.15 [.203]
-013	17.90 [.705]	13.53 [.533]	16.2 [.638]	5.95 [.234]
-020	23.50 [.925]	19.13 [.753]	21.8 [.858]	8.75 [.344]
-023	25.90 [1.020]	21.53 [.848]	24.2 [.953]	11.15 [.439]
-025	27.50 [1.083]	23.13 [.911]	25.8 [1.016]	10.75 [.423]
-030	31.50 [1.240]	27.13 [1.068]	29.8 [1.173]	12.75 [.502]
**035	35.50 [1.398]	31.13 [1.226]	33.8 [1.330]	14.75 [.581]
-040	39.50 [1.555]	35.13 [1.383]	37.8 [1.488]	16.75 [.659]
-049	46.70 [1.839]	42.33 [1.667]	45.0 [1.772]	20.35 [.801]
-050	47.50 [1.870]	43.13 [1.698]	45.8 [1.803]	20.75 [.817]
-060	55.50 [2.185]	51.13 [2.013]	53.8 [2.118]	24.75 [.974]
-070	63.50 [2.500]	59.13 [2.328]	61.8 [2.433]	28.75 [1.132]
-075	67.50 [2.657]	63.13 [2.485]	65.8 [2.591]	30.75 [1.211]
**100	87.50 [3.445]	83.13 [3.273]	85.8 [3.378]	40.75 [1.604]

G97 HC B "6"1"6"
G7 5 @ 7 % . %
f9f : , ! \$ & ! \$ " \$! L I 8 J ! @ G < C K B L
fG5 A 9 5 G : = " % 9 L 7 9 D H 5 G G < C K B L
fB J 5 @ 6 @ 9 C B ! \$ " \$ @ 9 5 8 G H M 9 C B @ M L
f7 9 B H F : 9 5 H F 9 G F 9 A C J 9 8 : C F 7 @ 5 F H M L

11 1 B C H F 9 @ 9 5 G 9 8 : C F D F C 8 1 7 H C B L



f9f : , ! \$ & ! \$ " \$! L I 8 J ! @ G < C K B L
fG5 A 9 5 G 9 F : , ! \$ ' \$! \$ " \$! L I @ 9 L 7 9 D H 5 G G < C K B L
fB J 5 @ 6 @ 9 C B ! \$ " \$ @ 9 5 8 G H M 9 C B @ M L
f7 9 B H F : 9 5 H F 9 G F 9 A C J 9 8 : C F 7 @ 5 F H M L
11 B C H F 9 @ 9 5 G 9 8 : C F D F C 8 1 7 H C B



f9f : , ! \$ & ! \$ " \$! L I 8 J ! @ G < C K B L
fG5 A 9 5 G : = " % 9 L 7 9 D H 5 G G < C K B L
f7 9 B H F : 9 5 H F 9 G F 9 A C J 9 8 : C F 7 @ 5 F H M L

D F C D F 9 5 F M B C H D
H 4 B C 7 1 A 9 B H 7 C B 1 6 8 B : C F A 5 H C B
7 C B : 8 B H 6 5 B 5 B D F C D F 4 E F 1 M C
G A H 9 7 2 4 7 " S B B G 5 @ B C H 6 9 7 9 0 C 8 1 7 9 8
C F H 5 B 0 9 F 9 8 H C C H 9 F B C 7 1 A 9 B H C F
8 6 7 4 6 8 9 E C H 9 F C F 1 0 8 : C F 5 B M
D F D C 0 9 C H 9 F H 5 B H 5 H K < F 4 H 5 G
C H 6 8 9 8 K 4 4 C 1 H K 9 8 D F 9 2 9 8 X F 4 H 8
7 C B 0 9 H C : G A H 9 7 2 4 7 "

samtec

) & 0 5 F 7 9 5 G H 6 @ 8 2 B 9 K 5 6 5 B M 2 8 (+) \$
D < C B 9 : 9 8 - ((*) : : : : 5 L . : 9 8 . () \$ (+
Y I A U J . : 2 4 G A H 7 " W a W X Y .) : & &

8 C B C H G 7 5 @ 9 8 F 5 K B :

8 9 7 F D H C B :
\$, A A ' 9 8 : 9 F 5 H 9 G C 7 ? 9 H 5 G 9 A 6 @ M

G 9 9 H 7 5 @ 9 8 :

8 K : " B C "
9 F : , ! L L L ! L ! " L ! L ! 8 J ! L L L

6 M ? B C @ 8 9 B - # & # & \$ \$) G < 9 9 H " C : ')

: P 8 K : P A 6 7 P A J 1 P 9 f . : , ! L L L L L ! L ! L I 8 J ! L L L I A ? H 6 9 8 F K