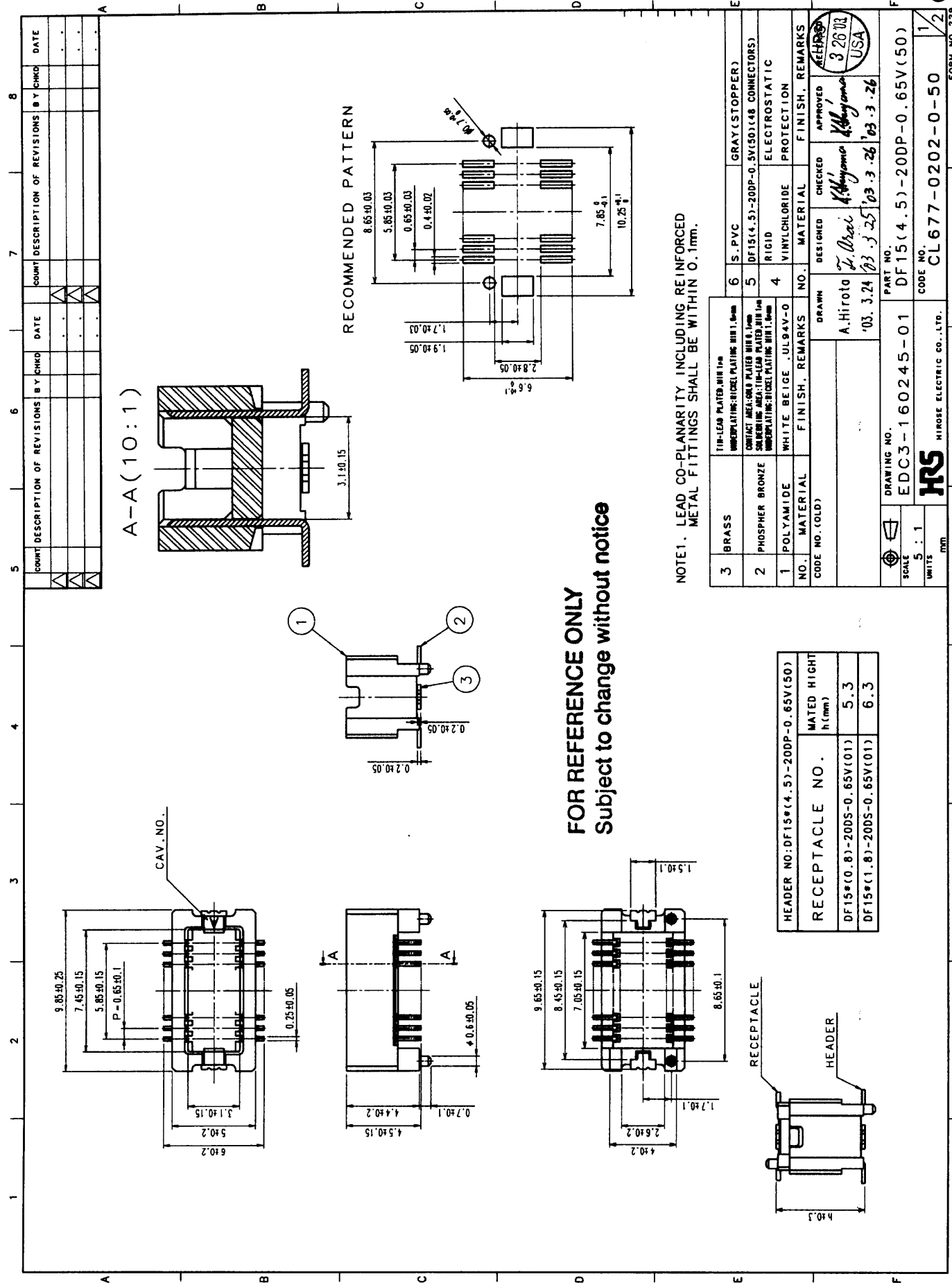


DESCRIPTION OF REVISIONS		BY	CHKD	DATE	COUNT	DESCRIPTION OF REVISIONS		BY	CHKD	DATE
△					△					
△					△					
APPLICABLE STANDARD										
RATING	OPERATING TEMPERATURE RANGE	-35 °C TO +85 °C (NOTE1)			STORAGE TEMPERATURE RANGE	-10 °C TO 60 °C				
	VOLTAGE	50 V AC			APPLICABLE CONNECTOR	DF15#(**)-20DS-0.65V(01)				
	CURRENT	0.3 A								
SPECIFICATIONS										
ITEM	TEST METHOD				REQUIREMENTS				QT	AT
CONSTRUCTION										
GENERAL EXAMINATION	VISUALLY AND BY MEASURING INSTRUMENT.				ACCORDING TO DRAWING.				○	○
MARKING	CONFIRMED VISUALLY.								○	○
ELECTRICAL CHARACTERISTICS										
CONTACT RESISTANCE	100 mA (DC OR 1000 Hz).				50 mΩ MAX.				○	-
CONTACT RESISTANCE MILLIVOLT LEVEL METHOD.	20 mV MAX. mA(DC OR 1000 Hz).				mΩ MAX.				-	-
INSULATION RESISTANCE	100 VDC.				500 MΩ MIN.				○	-
VOLTAGE PROOF	150 V AC FOR 1 min.				NO FLASHOVER OR BREAKDOWN.				○	-
MECHANICAL CHARACTERISTICS										
CONTACT INSERTION AND EXTRACTION FORCES	- BY STEEL GAUGE.				INSERTION FORCE - N MAX. EXTRACTION FORCE - N MIN.				-	-
INSERTION AND WITHDRAWAL FORCES	MEASURED BY APPLICABLE CONNECTOR.				INSERTION FORCE 12 N MAX. EXTRACTION FORCE 1 N MIN.				○	-
MECHANICAL OPERATION	50 TIMES INSERTIONS AND EXTRACTIONS.				① CONTACT RESISTANCE: 50 mΩ MAX. ② NO DAMAGE, CRACK AND LOOSENESS, OF PARTS.				○	-
VIBRATION	FREQUENCY 10 TO 55 Hz, SINGLE AMPLITUDE 0.75 mm, - m/s ² AT 2 h, FOR 3 DIRECTIONS.				① NO ELECTRICAL DISCONTINUITY OF 1 μs. ② CONTACT RESISTANCE: 50 mΩ MAX. ③ NO DAMAGE, CRACK AND LOOSENESS, OF PARTS.				○	-
SHOCK	490 m/s ² DURATION OF PULSE 11 ms AT 3 TIMES FOR 3 DIRECTIONS.				① NO ELECTRICAL DISCONTINUITY OF 1 μs. ② CONTACT RESISTANCE: 50 mΩ MAX. ③ NO DAMAGE, CRACK AND LOOSENESS, OF PARTS.				○	-
ENVIRONMENTAL CHARACTERISTICS										
DAMP HEAT (STEADY STATE)	EXPOSED AT 40±2 °C, 90 TO 95 %, 96 h.				① CONTACT RESISTANCE: 50 mΩ MAX. ② INSULATION RESISTANCE: 500 MΩ MIN. ③ NO DAMAGE, CRACK AND LOOSENESS, OF PARTS.				○	-
RAPID CHANGE OF TEMPERATURE	TEMPERATURE -55→5 TO 35→85→5 TO 35 °C TIME 30→10 TO 15→30→10 TO 15 min UNDER 5 CYCLES.				① CONTACT RESISTANCE: 50 mΩ MAX. ② INSULATION RESISTANCE: 500 MΩ MIN. ③ NO DAMAGE, CRACK AND LOOSENESS, OF PARTS.				○	-
CORROSION SALT MIST	EXPOSED IN 5% SALT WATER SPRAY FOR 48 h.				① CONTACT RESISTANCE: 50 mΩ MAX. ② NO HEAVY CORROSION.				○	-
SULPHUR DIOXIDE	EXPOSED IN 10 PPM FOR 96h. (TEST STANDARD: JEIDA-39)				① CONTACT RESISTANCE: 50 mΩ MAX. ② NO HEAVY CORROSION.				○	-
REMARKS	NOTE1: INCLUDE THE TEMPERATURE RISING BY CURRENT.				DRAWN	DESIGNED	CHECKED	APPROVED	RELEASED	
					A. Hirota '03. 3.24	T. Urai '03. 3.25	K. Hayama '03. 3.25	K. Hayama '03. 3.25	HRS 3 26 '03 USA	
	Unless otherwise specified, refer to MIL-STD-1344.									
	Note QT: Qualification Test AT: Assurance Test O: Applicable Test									
HRS HIROSE ELECTRIC CO., LTD.				SPECIFICATION SHEET				PART NO. DF15(4.5)-20DP-0.65V(50)		
CODE NO.(OLD) CL		DRAWING NO. ELC4-160245-01			CODE NO. CL677-0202-0-50			1/1		

FOR REFERENCE ONLY
Subject to change without notice

TO





FOR REFERENCE ONLY
 Subject to change without notice

NOTE1. LEAD CO-PLANARITY INCLUDING REINFORCED METAL FITTINGS SHALL BE WITHIN 0.1mm.

NO.	MATERIAL	FINISH	REMARKS	NO.	MATERIAL	FINISH	REMARKS
3	BRASS	TIN-LEAD PLATED WIRE 1.0mm		6	S. PVC	GRAY (STOPPER)	
2	PHOSPHOR BRONZE	CONTACT AREA: GOLD PLATED WIRE 0.1mm SOLDERING AREA: TIN-LEAD PLATED WIRE 1.0mm		5	DF15(4.5)-20DP-0.65V(50)	ELECTROSTATIC PROTECTION	
1	POLYAMIDE	WHITE BEIGE .UL94V-0		4	VINYLCHLORIDE		

DESIGNED	CHECKED	MATERIAL	FINISH	REMARKS
A. Hirota	K. Kobayama			
03. 3.24	03. 3.25			

RECEPTACLE NO.	MATED HEIGHT h (mm)
DF15*(0.8)-20DS-0.65V(01)	5.3
DF15*(1.8)-20DS-0.65V(01)	6.3

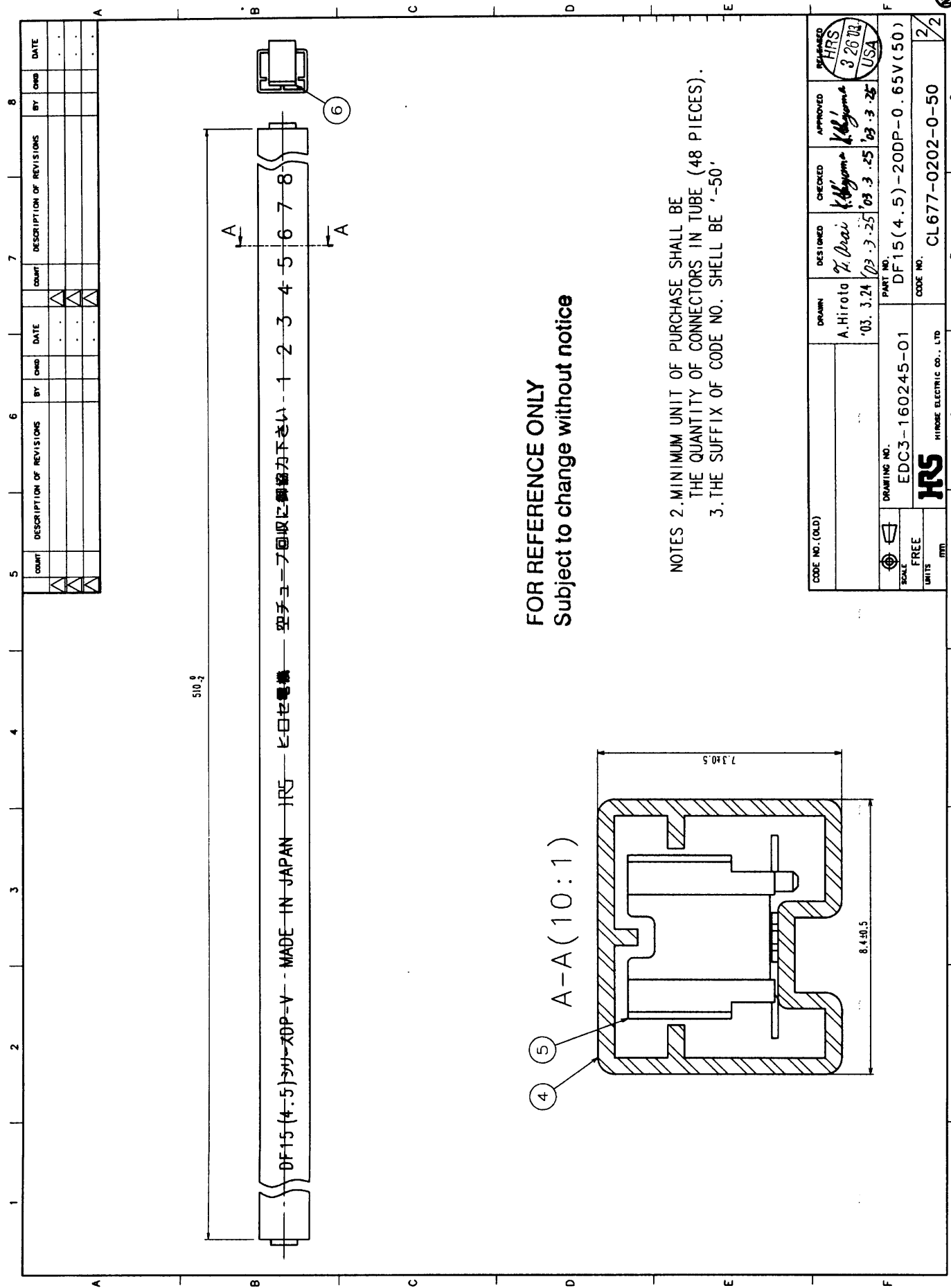
HEADER NO.:	DF15*(4.5)-20DP-0.65V(50)
DRAWING NO.	EDC3-160245-01
PART NO.	DF15(4.5)-20DP-0.65V(50)
CODE NO.	CL 677-0202-0-50

SCALE	UNITS
5 : 1	mm

COUNT DESCRIPTION OF REVISIONS BY CHKD DATE	COUNT DESCRIPTION OF REVISIONS BY CHKD DATE

TO
 NC
 1/2

FORM NO. 229



NO.	DESCRIPTION OF REVISIONS	BY	DATE	COUNT	DESCRIPTION OF REVISIONS	BY	DATE
1				1			
2				1			
3				1			
4				1			
5				1			
6				1			
7				1			
8				1			

FOR REFERENCE ONLY
Subject to change without notice

NOTES 2. MINIMUM UNIT OF PURCHASE SHALL BE
 THE QUANTITY OF CONNECTORS IN TUBE (48 PIECES).
 3. THE SUFFIX OF CODE NO. SHALL BE '-50'.

CODE NO. (OLD)		DRAWN	A. Hiroto	DESTINED	T. Orai	CHECKED	K. Kiyama	APPROVED	K. Kiyama	RELEASED	HRS
			'03. 3. 24		'03. 3. 25		'03. 3. 25		'03. 3. 25		3 20 03 USA
DRAWING NO.	EDC3-160245-01	PART NO.	DF15(4.5)-20DP-0.65V(50)								
SCALE	FREE	UNITS	mm								
HRS HIROSE ELECTRIC CO., LTD			CODE NO.	CL677-0202-0-50							
				2							

TO	