

4

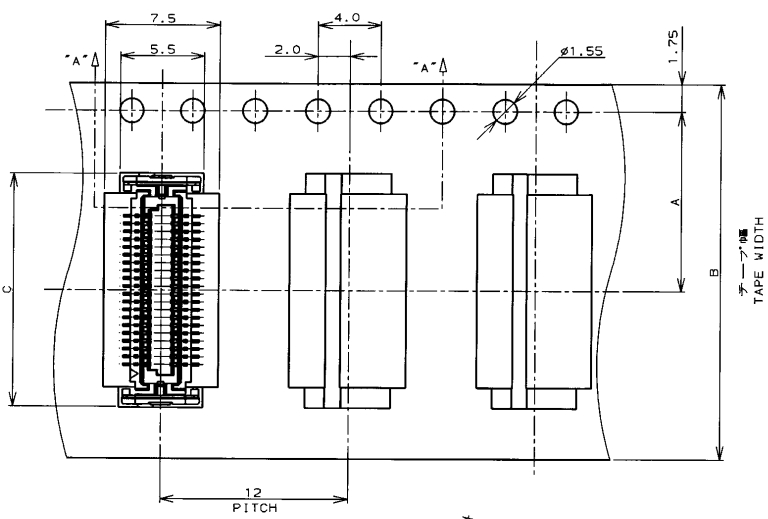
3

2

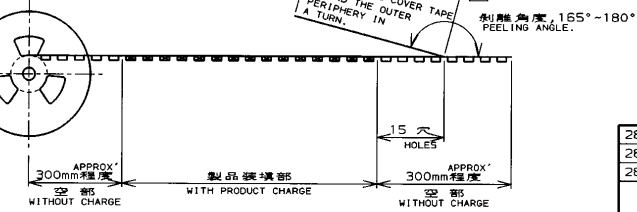
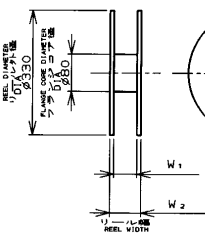
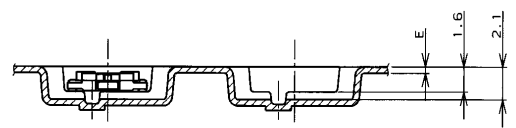
1

THIS DRAWING IS UNPUBLISHED. RELEASED FOR PUBLICATION .19
 (C) COPYRIGHT 19 BY AMP INCORPORATED. ALL RIGHTS RESERVED.

REVISIONS								
LOC	DTST	P	LTR	DESCRIPTION	ECN	DATE	DWN	APVD
J		O		RELEASED	FJ00-5477-96	12/8/96	S.K.	S.K.



TOP OF REEL
引出し方向
→



カマーテープリーフ部
外周一部
WEEDING THE COVER TAPE AROUND THE OUTER PERIPHERY IN A TURN.
剝離角度, 165°-180°
PEELING ANGLE.

28.4	24.4	0.4	15.0	24	11.5	1500	40	4-353686-0	4-353687-0	
28.4	24.4	0.4	12.5	24	11.5	1500	30	3-353686-0	3-353687-0	
28.4	24.4	0.4	10.0	24	11.5	1500	20	2-353686-0	2-353687-0	
W2	W1	E	C	B	A	数量 (個)	極数	コネクタ型番 (シールド)	コネクタ型番 (シールド)	
							数量 (個)	極数	コネクタ型番 (シールド)	コネクタ型番 (シールド)

THIS DRAWING IS A CONTROLLED DOCUMENT FOR AMP INCORPORATED. IT IS SUBJECT TO CHANGE AND THE CONTROLLING ENGINEERING ORGANIZATION SHOULD BE CONTACTED FOR THE LATEST REVISION.

CHK: S. Kajiruma 12/96
 APVD: K. Kobayashi 3/98
 DATE: 12/8/96

AMP Kawasaki, Japan

ON TAPING (EMBOSS)
 0.5mm PITCH FS CONN. RECEPTACLE ASSEMBLY
 WITH KEY WITHOUT BOSS & POLYIMIDE FILM

SIZE: A3 CAGE CODE: 00779 DRAWING NO: 353687

CUSTOMER DRAWING SCALE: SHEET 1 OF 1 REV 0

AMP1470-19 REV 10/93

参考図面