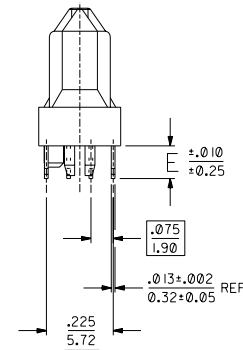
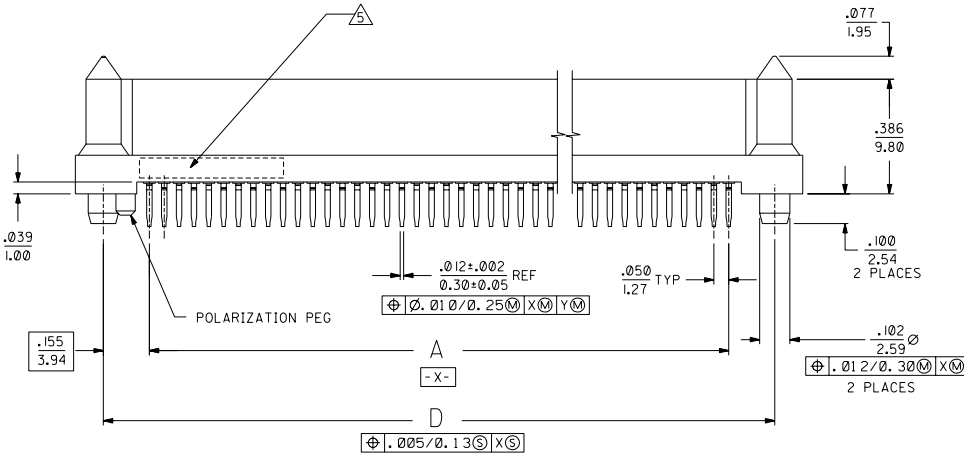
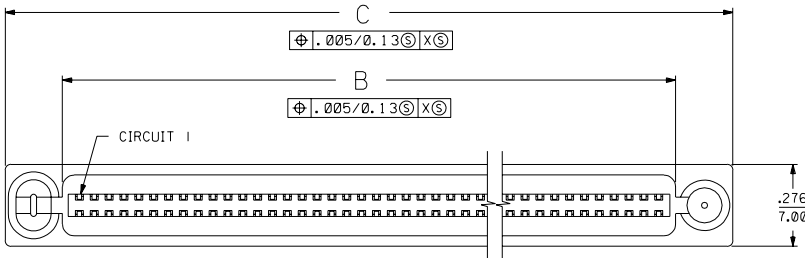


**NOTES:**

- 1) MATERIALS:  
HOUSING- LCP, GLASS FILLED, 94V-0, BLACK.  
TERMINALS- COPPER ALLOY
  - 2) FINISH:  
TERMINALS:  
.000030/(0.00076) MINIMUM GOLD IN CONTACT AREA AND  
.000050/(0.00127) MINIMUM TIN IN TAIL AREA OVER  
.000075/(0.00191) MINIMUM NICKEL UNDERPLATE OVERALL.
  - 3) ASSEMBLY MATES WITH MOLEX P/N SDA-71661-7\*\*\*.  
CONFORMS TO PRODUCT SPECIFICATION PS-71660.
- ⚠️ RECOMMENDED P.C. BOARD THICKNESS IS .062/1.6 mm.
- ⚠️ FOUR DIGIT DATE CODE TO BE LOCATED ON SURFACE AS SHOWN.



**NOTE FOR LEAD FREE CONVERSION:**

THE PRIMARY SHIPPING CARTON WILL BE LABELED 'COMPLIANT TO ROHS DIRECTIVE 2002/95/EC AND ELV ANNEX II OF DIRECTIVE 2000/53/EC'. CARTONS WITHOUT THIS LABEL MAY CONTAIN PRODUCT WITH LEAD.

N	ADD LONG TAIL UCP2004-1302 RWHITE 04/07/14			
M	LEAD FREE CONV ECN UCP2004-2096 RKADAMS 04/04/29			
L	REVISED PER UDT 2000-1231 ACHAMMER 00/06/07			
K	REVISED PER ECN U71314 ACHAMMER 97/4/25			
J	REVISED PER ECN U70153 ACHAMMER 96/07/19			
I	REVISED PER ECN U70090 ACHAMMER 96/7/26			
H	REVISED PER ECN U61278 5-2-96 DGA			
G	REVISED PER ECN U60641 11-29-95 DHS			
F	REVISED PER ECN U60564 11-8-95 RAN			
E	REVISED PER ECN U50229 9-23-94 RAN			
D	REVISED PER ECN U50090 9-30-94 RAN			
C	REVISED PER ECN U40506 4-15-94 RAN			
B	REVISED PER ECN U40305 3-4-94 RAN			
A	INITIAL RELEASE PER ECN U31832 12-15-93 RAN			
2	N	I	PRELIMINARY	
1	N	I	11-17-93 RAN	
MFG.	SH.	REV.	LTR.	REVISIONS

SALES ASSEMBLY  
EBBI 50D VERTICAL RPT  
BLIND MATE CONNECTOR

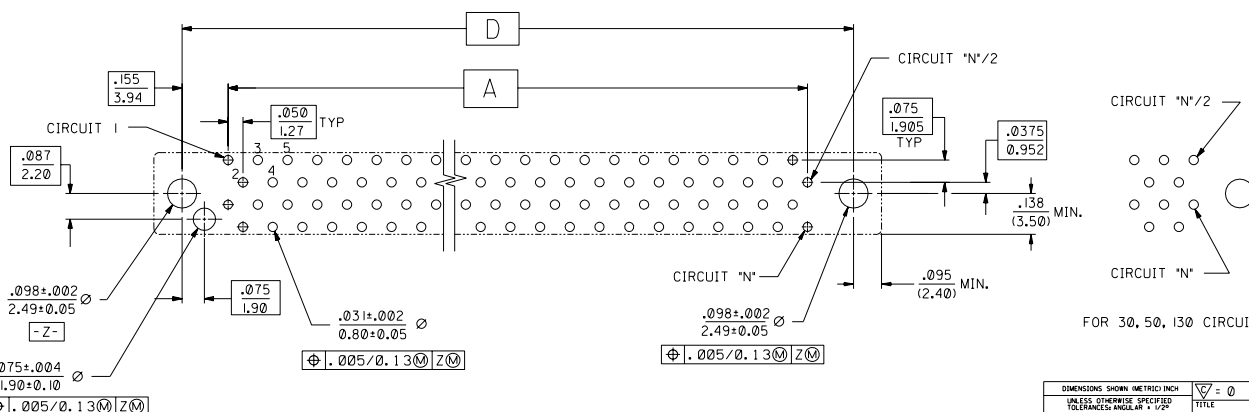
MOLEX INCORPORATED SHEET NO. DATE  
1 OF 2 11/17/93

SEE TABLE

SALES ASSEMBLY SDA-71660-7\*\*\*

NO DRAWING CONTAINS INFORMATION THAT IS PROPRIETARY TO MOLEX INC. AND SHOULD NOT BE USED WITHOUT WRITTEN PERMISSION.

ITEM NUMBER	CKT ('N')	A	B	C	D	E
71660-7030	30	.700 (17.78)	.815 (20.70)	1.199 (30.45)	1.010 (25.65)	.110 (2.79)
71660-7040	40	.950 (24.13)	1.065 (27.05)	1.449 (36.80)	1.260 (32.00)	
71660-7050	50	1.200 (30.48)	1.315 (33.40)	1.699 (43.15)	1.510 (38.35)	
71660-7060	60	1.450 (36.83)	1.565 (39.75)	1.949 (49.50)	1.760 (44.70)	.134 (3.40)
71660-7068	68	1.650 (41.91)	1.765 (44.83)	2.149 (54.58)	1.960 (49.78)	
71660-7080	80	1.950 (49.53)	2.065 (52.45)	2.449 (62.20)	2.260 (57.40)	
71660-7100	100	2.450 (62.23)	2.565 (65.15)	2.949 (74.90)	2.760 (70.10)	.155 (3.94)
71660-7120	120	2.950 (74.93)	3.065 (77.85)	3.449 (87.60)	3.260 (82.80)	
71660-7130	130	3.200 (81.28)	3.315 (84.20)	3.699 (93.95)	3.510 (89.15)	
71660-7230	30	.700 (17.78)	.815 (20.70)	1.199 (30.45)	1.010 (25.65)	.110 (2.79)
71660-7240	40	.950 (24.13)	1.065 (27.05)	1.449 (36.80)	1.260 (32.00)	
71660-7250	50	1.200 (30.48)	1.315 (33.40)	1.699 (43.15)	1.510 (38.35)	
71660-7260	60	1.450 (36.83)	1.565 (39.75)	1.949 (49.50)	1.760 (44.70)	.134 (3.40)
71660-7268	68	1.650 (41.91)	1.765 (44.83)	2.149 (54.58)	1.960 (49.78)	
71660-7280	80	1.950 (49.53)	2.065 (52.45)	2.449 (62.20)	2.260 (57.40)	
71660-7300	100	2.450 (62.23)	2.565 (65.15)	2.949 (74.90)	2.760 (70.10)	.155 (3.94)
71660-7320	120	2.950 (74.93)	3.065 (77.85)	3.449 (87.60)	3.260 (82.80)	
71660-7330	130	3.200 (81.28)	3.315 (84.20)	3.699 (93.95)	3.510 (89.15)	
71660-7630	30	.700 (17.78)	.815 (20.70)	1.199 (30.45)	1.010 (25.65)	.110 (2.79)
71660-7640	40	.950 (24.13)	1.065 (27.05)	1.449 (36.80)	1.260 (32.00)	
71660-7650	50	1.200 (30.48)	1.315 (33.40)	1.699 (43.15)	1.510 (38.35)	
71660-7660	60	1.450 (36.83)	1.565 (39.75)	1.949 (49.50)	1.760 (44.70)	.134 (3.40)
71660-7668	68	1.650 (41.91)	1.765 (44.83)	2.149 (54.58)	1.960 (49.78)	
71660-7680	80	1.950 (49.53)	2.065 (52.45)	2.449 (62.20)	2.260 (57.40)	
71660-7700	100	2.450 (62.23)	2.565 (65.15)	2.949 (74.90)	2.760 (70.10)	.155 (3.94)
71660-7720	120	2.950 (74.93)	3.065 (77.85)	3.449 (87.60)	3.260 (82.80)	
71660-7730	130	3.200 (81.28)	3.315 (84.20)	3.699 (93.95)	3.510 (89.15)	



RECOMMENDED PC BOARD LAYOUT  $\Delta$   
 COMPONENT SIDE  
 FOR 40, 60, 68, 80, 100, 120 CIRCUIT SIZES

DIMENSIONS SHOWN (METRIC) INCH		MFG. SH. REV. LTR. REVISIONS	
SALES OTHERWISE SPECIFIED TOLERANCES ANGULAR $\pm 1/2^\circ$		REVISIONS	
TITLE		REVISIONS	
SALES ASSEMBLY		N SEE SHEET I	
EBBI 50D, VERTICAL RCPT,		K SEE SHEET I	
BLIND MATE CONNECTOR		B	
MOLEX INCORPORATED		A	
SHEET NO. 2		DATE 11/17/93	
PART NO. SDA-71660-7***		DRWG. NO. C C	
SEE TABLE		DRG. BY	
FILE NAME		SCALE	
APP'D. CAB		BY	