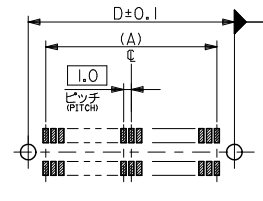
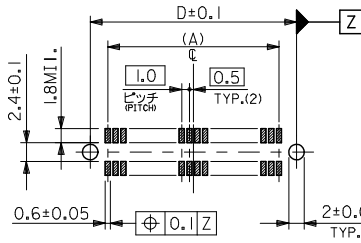
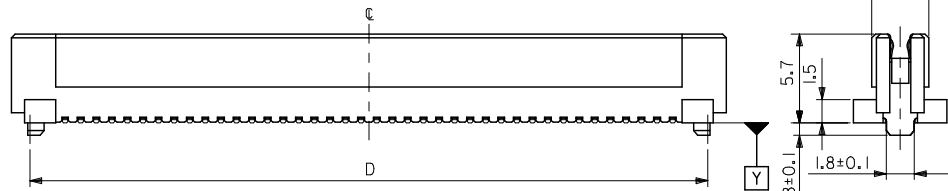
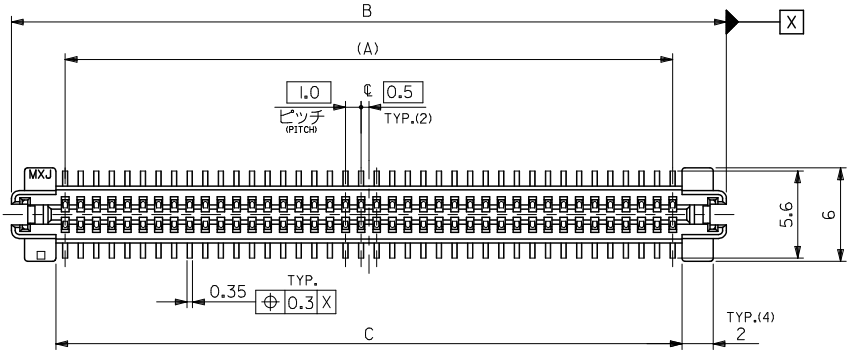
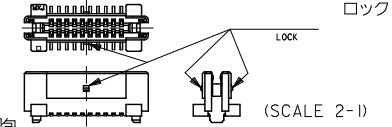


10 9 8 7 6 5 4 3 2 1



注) NOTES

1. 材質 MATERIAL  
ハウジング: ガラス入りLCP、白色、UL94V-0  
HOUSING: GLASS F.LCP, WHITE, UL94V-0  
ターミナル: 燐青銅 (t=0.2)  
TERMINAL: PHOSPHOR BRONZE
2. メッキ仕様 PLATING  
接点部: 金メッキ0.25µmMIN.  
CONTACT AREA: 0.25µmMIN.  
半田付け部: 半田メッキ1.0µmMIN.  
SOLDER TAIL AREA: IN-LEAD 1.0µmMIN.  
下地メッキ: ニッケルメッキ2.0µmMIN.  
UNDER-PLATING: NICKEL 2.0µmMIN.
3. 推奨基板厚 RECOMMENDED PCB THICKNESS  
1.0±0.1mm MIN.
4. テールのバラツキ寸法 TAIL COPLANARITY  
テールは、Y面を基準とし、上へ0.02下へ0.15の範囲にあり、目付テール平坦度は0.15とする。  
TAILS TO BE WITHIN 0.02 UPWARD AND 0.15 DOWNWARD FROM Y-DATUM PLANE, AND TAIL COPLANARITY TO BE 0.15.
5. ロックは、20, 34, 50極に設置する。  
LOCK TO BE ADDED TO 20, 34 AND 50 CKTS.



6. 梱包 PACKING  
本製品はスティック梱包とし、梱包後のENG. NO. は52584-\*\*\*9とする。  
THIS PRODUCTS TO BE PACKED IN TUBE, ENG. NO. 52584-\*\*\*9  
NO. DO NOT RECOMMEND THE USAGE OF TWO OR MORE OF THESE CONNECTORS BETWEEN A SINGLE PAIR OF P.C.B. BOARD.
7. 同基板内に複数個(2ヶ以上)の使用は避けてください。  
DO NOT RECOMMEND THE USAGE OF TWO OR MORE OF THESE CONNECTORS BETWEEN A SINGLE PAIR OF P.C.B. BOARD.

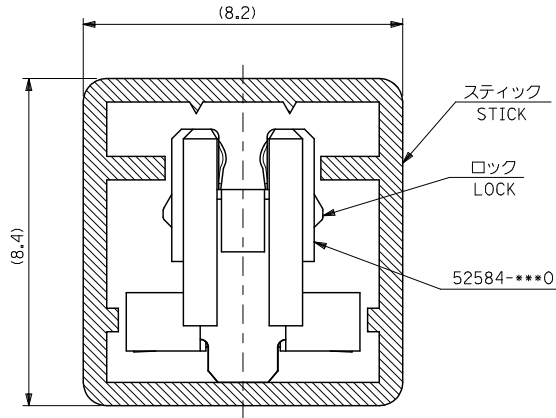
|      |      |      |     |            |                    |
|------|------|------|-----|------------|--------------------|
| 73.5 | 70.2 | 75.9 | 69  | 52584-1400 | 140                |
| 63.5 | 60.2 | 65.9 | 59  | 52584-1200 | 120                |
| 36.5 | 33.2 | 38.9 | 32  | 52584-0660 | 66                 |
| 33.5 | 30.2 | 35.9 | 29  | 52584-0600 | 60                 |
| 28.5 | 25.2 | 30.9 | 24  | 52584-0500 | 50                 |
| 20.5 | 17.2 | 22.9 | 16  | 52584-0340 | 34                 |
| 13.5 | 10.2 | 15.9 | 9   | 52584-0200 | 20                 |
| D    | C    | B    | (A) | ENG. NO.   | 極数<br>NO. OF CKTS. |

推奨基板寸法 (20, 60, 80, 84, 100, 120, 140極)  
RECOMMENDED PCB PATTERN LAYOUT (20,60,80,84,100,120,140 CKTS.)  
(SCALE 2-1)

推奨基板寸法 (34, 50, 66極)  
RECOMMENDED PCB PATTERN LAYOUT (34,50,66 CKTS.)  
(SCALE 2-1)

|   |                                       |            |                            |   |  |                        |
|---|---------------------------------------|------------|----------------------------|---|--|------------------------|
| REVISED<br>EC NO:<br>J<br>DRAWN BY:<br>YOSHIDAM<br>2008/11/06<br>CHKD:<br>THARUYAMA<br>2009/03/23<br>APPR:<br>THARUYAMA<br>2009/03/25 | GENERAL TOLERANCES (UNLESS SPECIFIED) |            | DIMENSION STYLE<br>MM ONLY | SCALE<br>4:1  | DESIGN UNITS<br>METRIC                             | THIRD ANGLE PROJECTION |
|   | 10 UNDER                              | ±0.2       | DRAWN BY<br>J. MIYAZAWA    | DATE  | TITLE<br>1.0 B-T-O-B S/T REC.<br>HSG ASSY          |                        |
|   | 10 OVER 30 UNDER                      | ±0.25      | CHECKED BY<br>M. SASAO     | DATE  | MOLEX INCORPORATED<br>DOCUMENT NO.<br>SD-52584-009 |                        |
|   | 30 OVER                               | ±0.3       | APPROVED BY<br>H. IKESUGI  | DATE  |  |                        |
|   | ANGULAR                               | ±3°        | MATERIAL NO.<br>SEE TABLE  | THIS DRAWING CONTAINS INFORMATION THAT IS PROPRIETARY TO MOLEX INCORPORATED AND SHOULD NOT BE USED WITHOUT WRITTEN PERMISSION |  |                        |
| DRAFT WHERE APPLICABLE MUST REMAIN WITHIN DIMENSIONS  |                                       | SIZE<br>A3 |                            |   |  |                        |

10 9 8 7 6 5 4 3 2 1



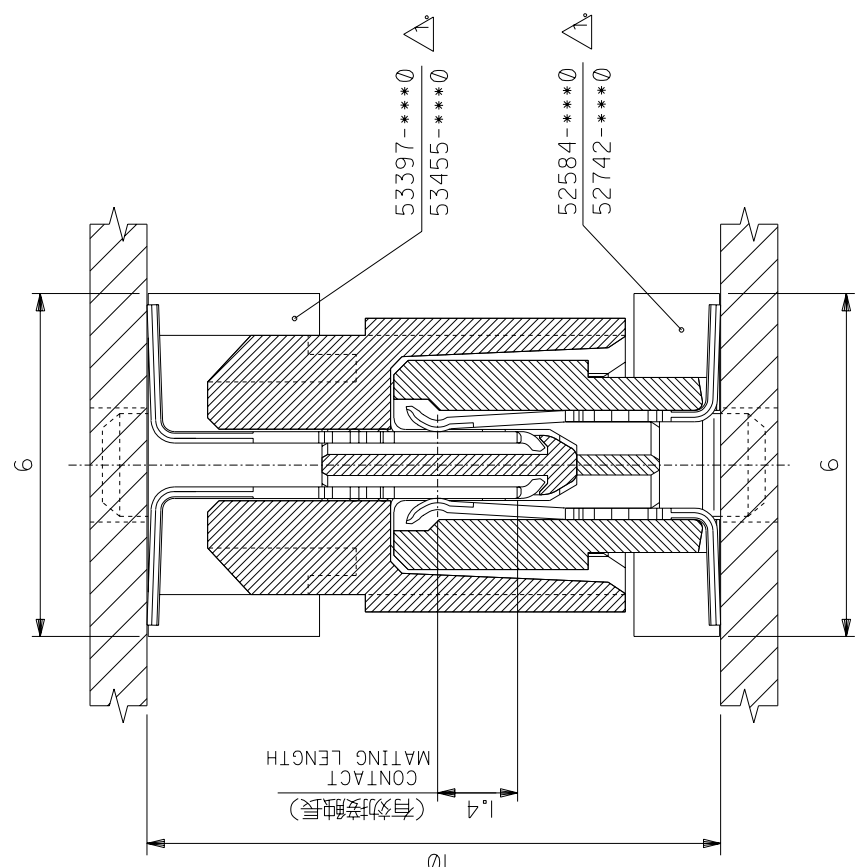
注記  
NOTES

1. スティック両端はキャップ止め。  
BOTH ENDS WITH CAPS.
2. 全 長: 600±2  
TOTAL LENGTH
3. 肉 厚: 0.6±0.2  
THICKNESS
4. ロックは、20, 34, 50極に設置。  
LOCK TO BE ADDED TO 20, 34  
AND 50 CKTS.

|                |            |                    |
|----------------|------------|--------------------|
| 8              | 52584-1209 | 120                |
| 24             | 52584-0349 | 34                 |
| 極数<br>QUANTITY | ENG. No.   | 極数<br>NO. OF CKTS. |

|         |        |             |  |        |  |  |           |              |  |  |
|---------|--------|-------------|--|--------|--|--|-----------|--------------|--|--|
| REVISED | EC NO: | 2008/11/07  | GENERAL TOLERANCES (UNLESS SPECIFIED)                      |        | DIMENSION STYLE<br>MM ONLY   |  | SCALE     | DESIGN UNITS | THIRD ANGLE PROJECTION                 |  |
|         | DRW:   | J. MIYAZAWA | 10 UNDER   | ±---   | DRAWN BY DATE  |  | 10:1      | METRIC       | TITLE<br>52584-***0<br>STICK PACKAGING |  |
|         | CHK:   | H. IKESUGI  | 10 OVER 30 UNDER   | ±---   | CHECKED BY DATE  |  |           |              |  |  |
|         | APP:   | S. YAMADA   | 30 OVER  | ±---   | APPROVED BY DATE   |  |           |              | MOLEX INCORPORATED                     |  |
| REV:    |        |             | ANGULAR  | ±--- ° | MATERIAL NO.   |  | SEE TABLE | DOCUMENT NO. | SHEET NO.                              |  |
|         |        |             | DRAFT WHERE APPLICABLE<br>MUST REMAIN<br>WITHIN DIMENSIONS |        | THIS DRAWING CONTAINS INFORMATION THAT IS PROPRIETARY TO MOLEX<br>INCORPORATED AND SHOULD NOT BE USED WITHOUT WRITTEN PERMISSION |  |           | SD-52584-010 | 1 OF 1                                 |  |

DWG. NO.  
SD-53397-\*\*\*0/52584-\*\*\*0  
SD-53455-\*\*\*0/52742-\*\*\*0



注記  
NOTES

- △ 53397-\*\*\*0 } ネール無し品  
52584-\*\*\*0 } WITHOUT NAIL
- 53455-\*\*\*0 } ネール有り品  
52742-\*\*\*0 } WITH NAIL

| 角度          | ANGLE | 公差    |
|-------------|-------|-------|
| 30°以上       | OVER  | ±0.3  |
| 10°以上 30°未満 | OVER  | ±0.25 |
| 10°未満       | UNDER | ±0.2  |
| 一般公差        |       |       |

SCALE DRAWING DO NOT SCALE DIMENSIONS IN METRIC

B

A

|                           |                                     |      |
|---------------------------|-------------------------------------|------|
| 材料<br>MATERIAL            | MOLEX-JAPAN CO.,LTD.<br>日本モレックス株式会社 |      |
| 仕上げ<br>FINISH             | —                                   |      |
| 適用電線範囲<br>WIRE RANGE      | —                                   |      |
| 被覆外径<br>INS. RANGE        | —                                   |      |
| DRAWN BY                  | CHK'D BY                            | REV  |
| J.M.                      | M.Yepo                              | A    |
| DATE                      | SCALE                               | 10-1 |
| 194/01/27                 |                                     |      |
| APP'D BY                  | DATE                                |      |
| J.M.                      | 92/10/27                            |      |
| DR.                       | CHK.                                |      |
| REVISION RECORD           |                                     |      |
| 記号                        | 変更内容                                |      |
| 0                         | 新規作成                                |      |
| A                         | 変更                                  |      |
| REVISION RECORD           |                                     |      |
| TITLE 名称                  |                                     |      |
| I;0 B-T0-B CONNECTOR 嵌合図  |                                     |      |
| CROSS-SECTION VIEW        |                                     |      |
| OF MATED CONNECTORS       |                                     |      |
| REVISE ONLY ON CAD SYSTEM |                                     |      |
| DWG. NO.                  |                                     |      |
| SD-53397-***0/52584-***0  |                                     |      |
| SD-53455-***0/52742-***0  |                                     |      |
| REV A                     |                                     |      |

ZF3110.0313MSG33970.DGN

THIS DRAWING CONTAINS INFORMATION THAT IS PROPRIETARY TO MOLEX(JAPAN) AND SHOULD NOT BE USED WITHOUT WRITTEN PERMISSION  
本図面は日本モレックス(株)の所有する情報を含むもので、当社の許可なく複製を禁止する。  
EN-01C(032)MAX1-33