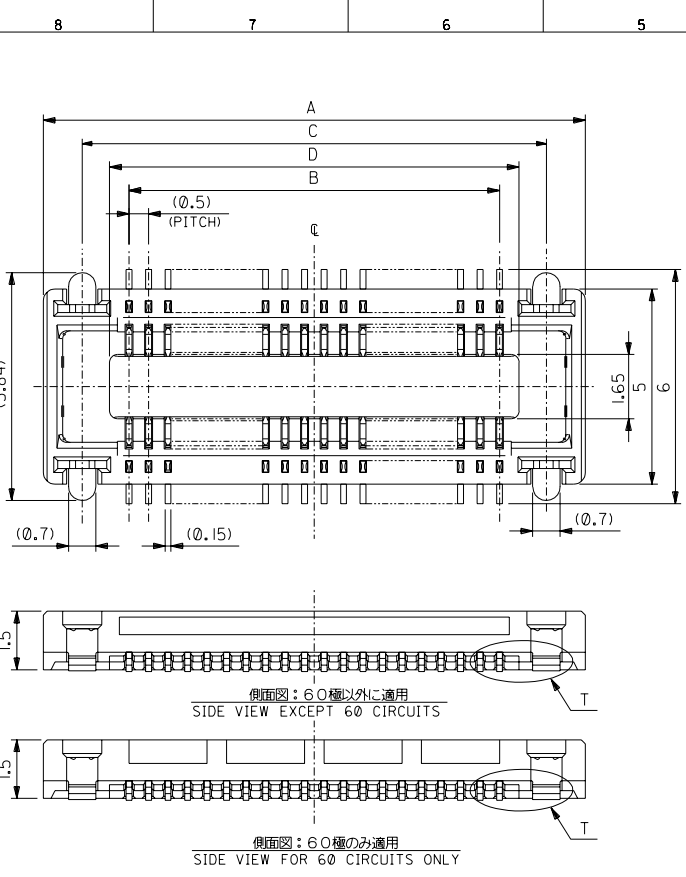
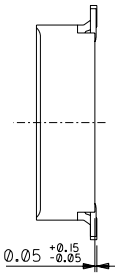


DWG. NO. SD-54363-038



注記 NOTES:

1. 材質 MATERIAL
ハウジング: LCP (液晶ポリマー)、ガラス充填、黒色、UL94V-0
HOUSING: LCP (LIQUID CRYSTAL POLYMER), GLASS FILLED, BLACK, UL94V-0
ターミナル: 銅合金 (t=0.15)
TERMINAL: COPPER ALLOY (t=0.15)
ネイル: 銅合金 (t=0.2)
NAIL: COPPER ALLOY (t=0.2)
2. メッキ仕様 PLATING
ターミナル TERMINAL
接点部: 金メッキ 0.25マイクロメートル以上
CONTACT AREA: GOLD 0.25 MICROMETER MINIMUM
半田付テール: 金メッキ 0.4マイクロメートル以下
SOLDER TAIL AREA: GOLD 0.4 MICROMETER MAXIMUM
下地メッキ: ニッケルメッキ 1.5マイクロメートル以上
UNDER PLATING: NICKEL 1.5 MICROMETER MINIMUM
ネイル NAIL
銅メッキ 3.0マイクロメートル以上
S: 3.0 MICROMETER MINIMUM
下地メッキ: ニッケルメッキ 1.0マイクロメートル以上
UNDER PLATING: NI 1.0 MICROMETER MINIMUM
3. テール平坦度は、0.08ミリメートル以下。テールとネイルを併せた平坦度は、0.1ミリメートル以下。
TAIL COPPLANARITY TO BE 0.08 MAXIMUM. TAILS AND NAILS COPPLANARITY TO BE 0.1 MAXIMUM.
4. 嵌合相手: 55299-**** (H=3mm)
MATED CONN.: 55299-**** (H=3mm)
55201-****, 55650-**** (H=2mm)
5. この製品は54363-**01, (エンボス梱包品 54363-**08)の給付品です。
THIS PRODUCT IS 'LEAD FREE' OF 54363-***01, (EMBOSSED TAPE PKG 54363-***08)



側面図: 60極以外に適用
SIDE VIEW EXCEPT 60 CIRCUITS

側面図: 60極のみ適用
SIDE VIEW FOR 60 CIRCUITS ONLY

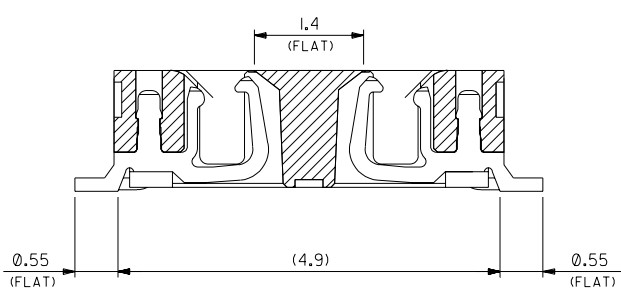
40.5	41.9	39.5	43.9	54363-1678	54363-1671	160	—
35.5	36.9	34.5	38.9	54363-1478	54363-1471	140	○
30.5	31.9	29.5	33.9	54363-1278	54363-1271	120	○
28	29.4	27	31.4	54363-1178	54363-1171	110	○
25.5	26.9	24.5	28.9	54363-1078	54363-1071	100	○
23	24.4	22	26.4	54363-0978	54363-0971	90	—
20.5	21.9	19.5	23.9	54363-0878	54363-0871	80	○
18	19.4	17	21.4	54363-0778	54363-0771	70	○
15.5	16.9	14.5	18.9	54363-0678	54363-0671	60	○
13	14.4	12	16.4	54363-0578	54363-0571	50	○
10.5	11.9	9.5	13.9	54363-0478	54363-0471	40	○
8	9.4	7	11.4	54363-0378	54363-0371	30	○
5.5	6.9	4.5	8.9	54363-0278	54363-0271	20	○

D	C	B	A	エンボス梱包品 EMBOSSED TAPE PACKAGING	製品番号 MATERIAL NO.	極数 CIRCUITS	量産対応 AVAILABLE
GENERAL TOLERANCES: (UNLESS SPECIFIED) — 一般公差				SCALE 10-1	DESIGN UNITS <input checked="" type="checkbox"/> mm <input type="checkbox"/> INCH	THIRD ANGLE PROJECTION <input type="checkbox"/> mm <input checked="" type="checkbox"/> INCH	SHT REV REVISE ON CAD ONLY
10 UNDER 未満				DRAWN BY & DATE <i>A. Iida</i> '04/01/06	TITLE: 0.5 mm PITCH B/B CONN. REC. HOUSING ASS'Y (H=2,3mm) WITH FITTING NAIL -LEAD FREE-		
10 OVER 以上	30 UNDER 未満			CHECKED BY & DATE <i>S. Takase</i> '04/01/06	MOLEX INCORPORATED		
30 OVER 以上				APPROVED BY & DATE <i>S. Takase</i> '04/01/06	CAD FILENAME SD-54363-038.S01	DRAWING NO. SD-54363-038	SHEET NO. 1 OF 2
WIRE RANGE 適用電線範囲				ANGLE 角度	THIS DRAWING CONTAINS INFORMATION THAT IS PROPRIETARY TO MOLEX INCORPORATED AND SHOULD NOT BE USED WITHOUT WRITTEN PERMISSION.		
INS. RANGE 被覆外径					EN-02J(097) MXJ-54		

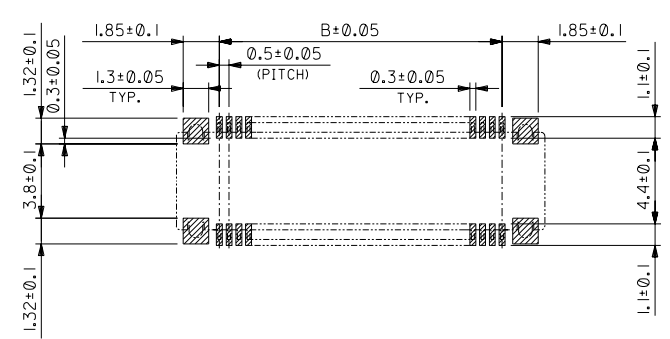
DO NOT SCALE DRAWING

DWG. NO. SD-54363-038

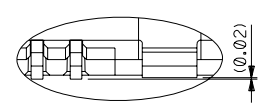
8 7 6 5 4 3 2 1



製品断面図 (半田付け部、吸着面寸法)
DETAIL FOR SOLDERING AND VACUUM AREA



推奨基板寸法
RECOMMENDED PCB PATTERN LAYOUT
(SCALE:5-1)

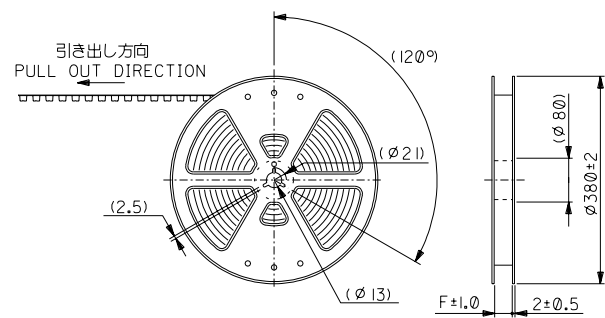


T音階詳細
DETAIL T

DO NOT SCALE DRAWING	EC NO.	EC NO.	EC NO.	EC NO.	SEE SHEET 1 OF 2	MATERIAL	GENERAL TOLERANCES:	SCALE	DESIGN UNITS	DIMENSIONS:	SHT	REV
	DRWN:	DRWN:	DRWN:	DRWN:	EC NO.	材料	(UNLESS SPECIFIED)	20-1	<input checked="" type="checkbox"/> mm <input type="checkbox"/> INCH	<input type="checkbox"/> mm <input type="checkbox"/> INCH <input checked="" type="checkbox"/> mm ONLY	REVISE ON	CAD ONLY
	CHK:	CHK:	CHK:	CHK:	DRWN:	注記参照	10 UNDER	DRAWN BY & DATE	<input type="checkbox"/> THIRD ANGLE			
	APPR:	APPR:	APPR:	APPR:	CHK:	SEE NOTES	未満	A. Iida '04/01/06	PROJECTION			
				APPR:	DESCRIPTION	注記参照	10 OVER	CHECKED BY & DATE		TITLE:		
					仕上付	SEE NOTES	30 UNDER	S. Takaya '04/01/06		0.5 mm PITCH B/B CONN. REC. HOUSING ASS'Y		
					WIRE RANGE		未満	APPROVED BY & DATE		(H=2,3mm) WITH FITTING NAIL		
					適用電線範囲		30 OVER	Y. Yamada '04/01/06		-LEAD FREE-		
					INS. RANGE		以上			MATERIAL NO.		
					被覆外径		ANGLE			SEE CHART		
							角度			DRAWING NO.		
										SD-54363-038		
										SHEET NO.		
										2		
										SIZE		
										B		
										EN-02J(097) MXJ-54		

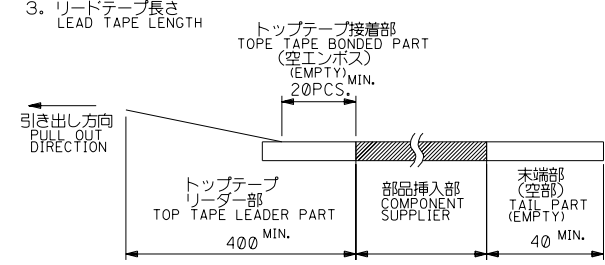
DWG. NO. SD-54363-039

8 7 6 5 4 3 2 1



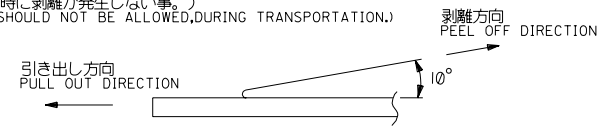
注) NOTES

- 製品番号 54363-***71 詳細寸法については、製品単体図面を参照下さい。
IN THE PACKAGE PART NUMBER 54363-***71 DETAILED DIMENSIONS, SEE SALES DRAWING FOR CONNECTOR.
- 梱包数量: 2500個/リール
NUMBER OF CONNECTORS: 2500 PCS/REEL.
- リードテープ長さ
LEAD TAPE LENGTH



- トップテープの剥離強度: (剥離方向は下図参照)
PEELING OFF FORCE OF TOP TAPE (PELLING DIRECTION AS SHOWN IN FOLLOWING FIGURE.)
0.1~1.3N (10~130gf)

尚、本規格値は、出荷時に適用。
THIS REQUIREMENT SHOULD BE APPLIED AT SHIPMENT.
(但し、輸送時に剥離が発生しない事。)
(PEEL OFF SHOULD NOT BE ALLOWED, DURING TRANSPORTATION.)



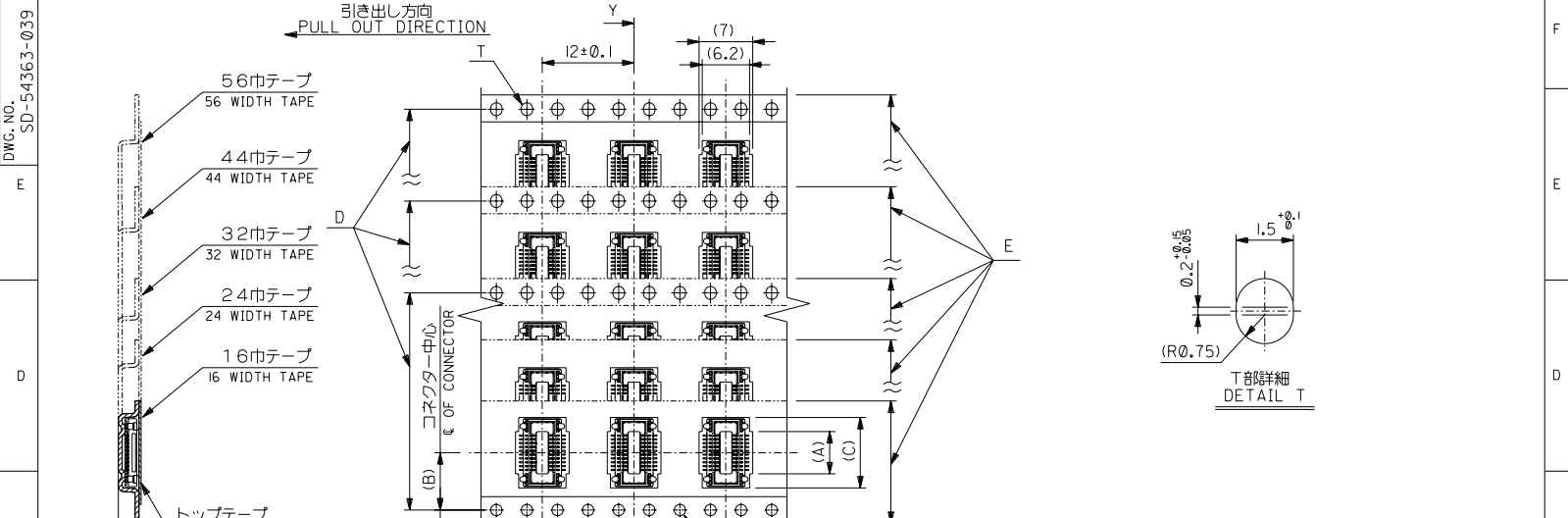
- 材料
MATERIAL
キャリアテープ: ポリプロピレン (PP)
CARRIER TAPE: POLYPROPYLENE (PP)
トップテープ: PET, PE, PEF
TOP TAPE: PET, PE, PEF
リール: ポリスチレン
REEL: POLYSTYRENE

- この製品は54363-***01, (エンボス梱包品 54363-***08)の鉛フリー品です。
THIS PRODUCT IS 'LEAD FREE' OF 54363-***01, (EMBOSSED TAPE PKG 54363-***08)

DO NOT SCALE DRAWING

EC NO. DRWN: CHK: APPR:	EC NO. DRWN: CHK: APPR:	EC NO. DRWN: CHK: APPR:	REVISED ECNNO. J2004-2225 DRWN: A.IDA '04/02/02 CHK: H.TAKASE APPR: MIYAZAWA, YO.ITO	REVISED ECNNO. J2004-1740 DRWN: A.IDA '04/01/06 CHK: H.TAKASE APPR: MIYAZAWA, YO.ITO	MATERIAL 材料 注記参照 SEE NOTES	GENERAL TOLERANCES: (UNLESS SPECIFIED) 一般公差	SCALE NONE	DESIGN UNITS <input checked="" type="checkbox"/> mm <input type="checkbox"/> INCH	THIRD ANGLE PROJECTION	DIMENSIONS: <input type="checkbox"/> mm <input type="checkbox"/> INCH <input checked="" type="checkbox"/> mm ONLY	SHT REV
			A	0	FINISH 仕上げ 注記参照 SEE NOTES	10 UNDER 未満 +0.2	DRAWN BY & DATE A. Iida '04/01/06	TITLE: 54363-***71 TAPING PACKAGE -LEAD FREE-			REVISE ON CAD ONLY
					WIRE RANGE 適用電線範囲	10 OVER 30 UNDER 以上 未満 +0.25	CHECKED BY & DATE S. Takase '04/01/06	MOLEX INCORPORATED			
					INS. RANGE 被覆外径	30 OVER 以上 +0.3	APPROVED BY & DATE Y. Ito '04/01/06				
						ANGLE 角度	CAD FILENAME SD-54363-039.S01	MATERIAL NO. SEE CHART	DRAWING NO. SD-54363-039	SHEET NO. 1 OF 2	SIZE B
							THIS DRAWING CONTAINS INFORMATION THAT IS PROPRIETARY TO MOLEX INCORPORATED AND SHOULD NOT BE USED WITHOUT WRITTEN PERMISSION.				EN-02J(097) MXJ-54

DWG. NO. SD-54363-039



57.5	56±0.3	52.4	44.2 39.2 34.2	26.2	40.55 35.55 30.55	54363-1678 54363-1478 54363-1278	160 140 120	— ○ ○
45.5	44±0.3	40.4	31.7 29.2 26.7 24.2	20.2	28.05 25.55 23.05 20.55	54363-1178 54363-1078 54363-0978 54363-0878	110 100 90 80	○ ○ — ○
33.5	32±0.3	28.4	21.7 19.2	14.2	18.05 15.55	54363-0778 54363-0678	70 60	○ ○
25.5	24±0.3	—	16.7 14.2 11.7	11.5	13.05 10.55 8.05	54363-0578 54363-0478 54363-0378	50 40 30	○ ○ ○
17.5	16±0.3	—	9.2	7.5	5.55	54363-0278	20	○

E キャリアテープ幅 CARRIER TAPE WIDTH		D	(C)	(B)	(A)	製品番号 MATERIAL NO.	極数 CIRCUITS	量産対応 AVAILABLE
GENERAL TOLERANCES: — 一般公差		SCALE NONE	DESIGN UNITS <input checked="" type="checkbox"/> mm <input type="checkbox"/> INCH	THIRD ANGLE PROJECTION <input type="checkbox"/> mm <input type="checkbox"/> INCH <input checked="" type="checkbox"/> mm ONLY		TITLE: 54363-**71 TAPING PACKAGE -LEAD FREE-		
10 UNDER 未満	+0.2	DRAWN BY & DATE A. Iida '04/01/06		MATERIAL NO. DRAWING NO. SHEET NO. SEE CHART SD-54363-039 2				
10 OVER 以上	30 UNDER 未満	+0.25	CHECKED BY & DATE S. Takano '04/01/06		MATERIAL NO. DRAWING NO. SHEET NO. SEE CHART SD-54363-039 2			
30 OVER 以上	+0.3	APPROVED BY & DATE Y. Iida '04/01/06		MATERIAL NO. DRAWING NO. SHEET NO. SEE CHART SD-54363-039 2				
ANGLE 角度	+3°	CAD FILENAME SD-54363-039.S02		MATERIAL NO. DRAWING NO. SHEET NO. SEE CHART SD-54363-039 2				

EC NO. DRWN: CHK: APPR:	EC NO. DRWN: CHK: APPR:	EC NO. DRWN: CHK: APPR:	EC NO. DRWN: CHK: APPR:	SEE SHEET 1 OF 2 ECNNO. DRWN: CHK: APPR:	DESCRIPTION FINISH 仕上げ	WIRE RANGE 適用電線範囲	INS. RANGE 被覆外径	REVISION
8	7	6	5	4	3	2	1	0