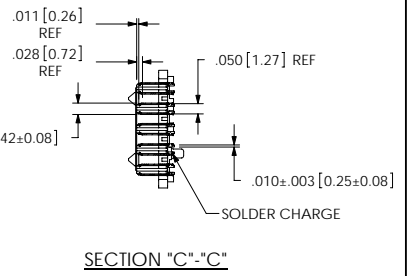
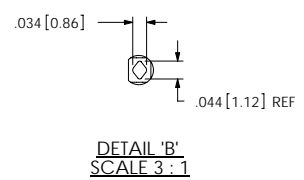
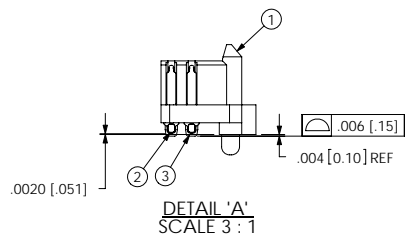
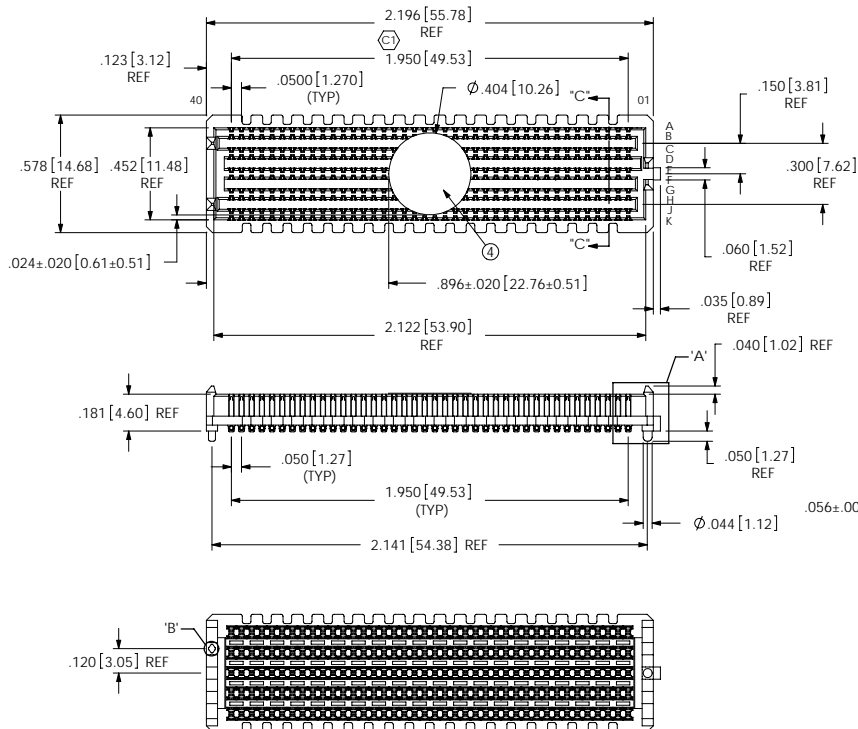


ASP-134602-01

REVISION

NOTES:

1. VITA 57 CONNECTOR.
2. Ⓢ REPRESENTS A CRITICAL DIMENSION.
3. MINIMUM PUSHOUT FORCE: .75 LB.
4. PARTS TO BE PACKAGED IN TAPE & REEL.



ITEM NO.	PART NUMBER	QUANTITY	MATERIAL
1	SEAM-40-02-0-10-A	1.0000	VECTRA E130I, COLOR: BLACK
2	T-1M36-02-0-S	400.00	BRUSH ALLOY 390 HT
3	SDT-645-012-02	400.00	SOLDER 95.5% TIN/3.8% SILVER 7% COPPER
4	K-DOT-.404-.500-.005	1.0000	POLYIMIDE FILM
5	CT-SEAM032MS	1.0000	CONDUCTIVE POLYMER

UNLESS OTHERWISE SPECIFIED, DIMENSIONS ARE IN INCHES. TOLERANCES ARE:  
 DECIMALS ANGLES  
 XX:  $\pm .01 [3]$  2°  
 XXX:  $\pm .005 [13]$   
 XXXX:  $\pm .0020 [051]$

PROPRIETARY NOTE  
 THIS DOCUMENT CONTAINS INFORMATION CONFIDENTIAL AND PROPRIETARY TO SAMTEC, INC. AND SHALL NOT BE REPRODUCED OR TRANSMITTED TO OTHER DOCUMENTS OR DISCLOSED TO OTHERS OR USED FOR ANY PURPOSE OTHER THAN THAT WHICH IT WAS OBTAINED WITHOUT THE EXPRESSED WRITTEN CONSENT OF SAMTEC, INC.

DO NOT SCALE DRAWING SHEET SCALE: 1:5:1

PLATING:  
 CONTACT AREA: .00030 GOLD OVER .00050 NICKEL  
 REMAINDER: .00200 REF TIN OVER .00050 NICKEL  
 SOLDER COMPOSITION: 95.5% TIN/3.8% SILVER/7% COPPER CHARGE TAIL

F:\dwg\sw\asp\134600\ASP-134602-01.SLDDRW

**samtec**

520 PARK EAST BLVD, NEW ALBANY, IN 47150  
 PHONE: 812-944-6733 FAX: 812-948-5047  
 e-Mail: info@SAMTEC.com code: 55322

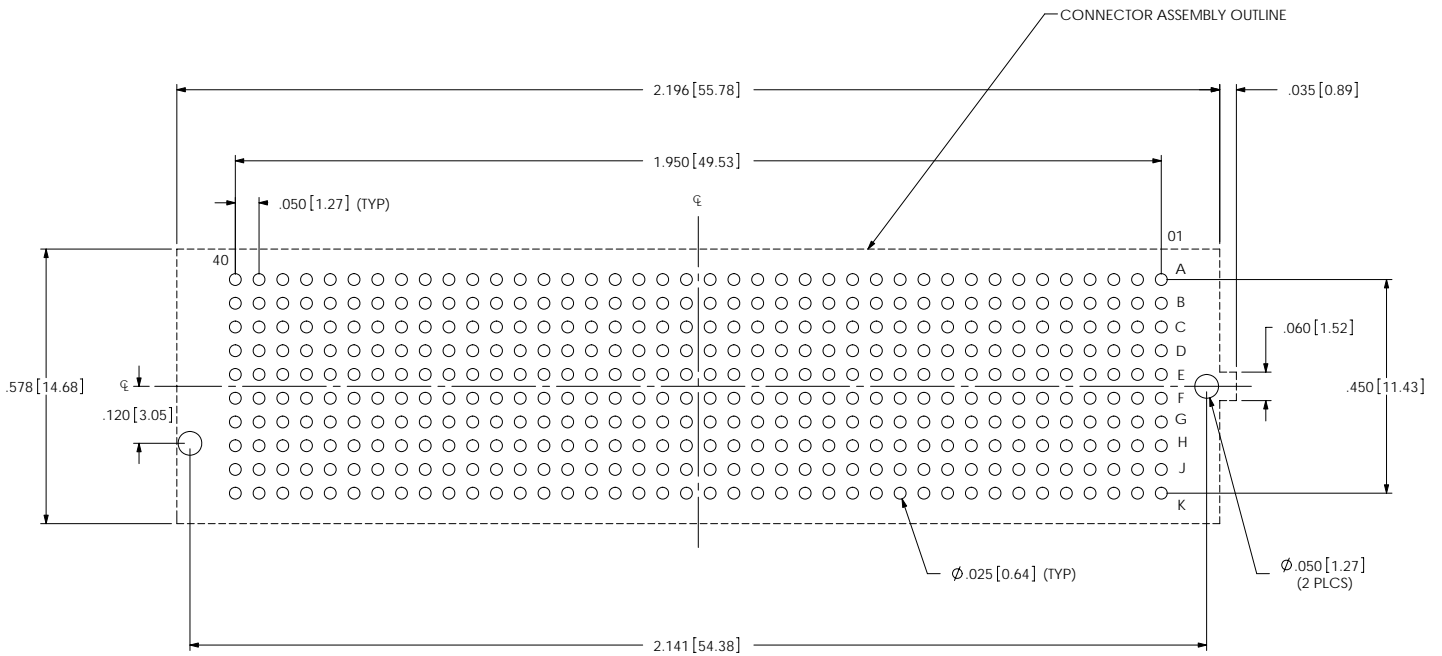
DESCRIPTION:  
 .050 PITCH TERMINAL ARRAY ASSEMBLY

DWG. NO.  
**ASP-134602-01**

BY: G. PURVIS 10/31/2007 SHEET 1 OF 4

REVISION E

RECOMMENDED PCB LAYOUT FOR ASP-134602-01



ALL DIMENSIONS ARE SYMMETRIC ABOUT CENTERLINE

PROPRIETARY NOTE

THIS DOCUMENT CONTAINS INFORMATION CONFIDENTIAL AND PROPRIETARY TO SAMTEC, INC. AND SHALL NOT BE REPRODUCED OR TRANSFERRED TO OTHER DOCUMENTS OR DISCLOSED TO OTHERS OR USED FOR ANY PURPOSE OTHER THAN THAT WHICH IT WAS OBTAINED WITHOUT THE EXPRESSED WRITTEN CONSENT OF SAMTEC, INC.

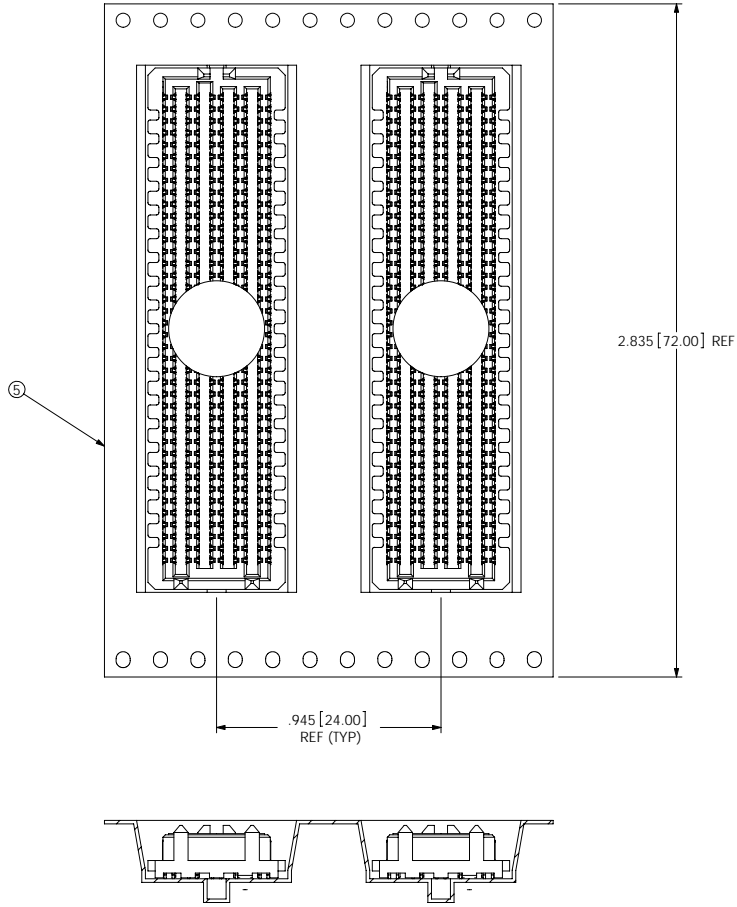


520 PARK EAST BLVD, NEW ALBANY, IN 47150  
PHONE: 812-944-6733 FAX: 812-948-5047  
e-Mail: info@SAMTEC.com code: 55322

F:\dwg\sw\asp\134000\ASP-134602-01.SLDDRW



REVISION E



**PROPRIETARY NOTE**  
 THIS DOCUMENT CONTAINS INFORMATION  
 CONFIDENTIAL AND PROPRIETARY TO  
 SAMTEC, INC. AND SHALL NOT BE REPRODUCED  
 OR TRANSFERRED TO OTHER DOCUMENTS OR  
 DISCLOSED TO OTHERS OR USED FOR ANY  
 PURPOSE OTHER THAN THAT WHICH IT WAS  
 OBTAINED WITHOUT THE EXPRESSED WRITTEN  
 CONSENT OF SAMTEC, INC.

**samtec**  
 520 PARK EAST BLVD, NEW ALBANY, IN 47150  
 PHONE: 812-944-6733 FAX: 812-948-5047  
 e-Mail: info@SAMTEC.com code: 55322

F:\dwg\sw\asp\134000\ASP-134602-01.SLDDRW