

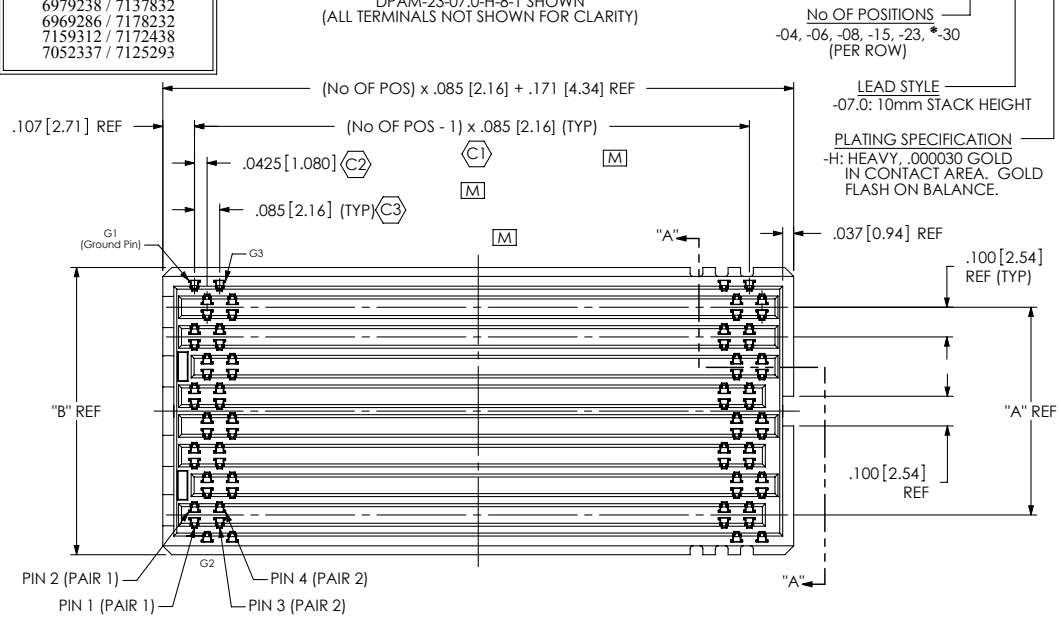
REVISION M

DO NOT SCALE FROM THIS PRINT

**PATENT NUMBERS**  
 6979238 / 7137832  
 6969286 / 7178232  
 7159312 / 7172438  
 7052337 / 7125293

**FIG. 1**  
 DPAM-23-07.0-H-8-1 SHOWN  
 (ALL TERMINALS NOT SHOWN FOR CLARITY)

**DPAM-XX-07.0-X-X-X-XX**



**No OF POSITIONS**  
 -04, -06, -08, -15, -23, \*-30  
 (PER ROW)

**LEAD STYLE**  
 -07.0: 10mm STACK HEIGHT

**PLATING SPECIFICATION**  
 -H: HEAVY, .000030 GOLD IN CONTACT AREA, GOLD FLASH ON BALANCE.

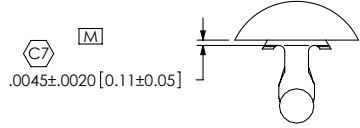
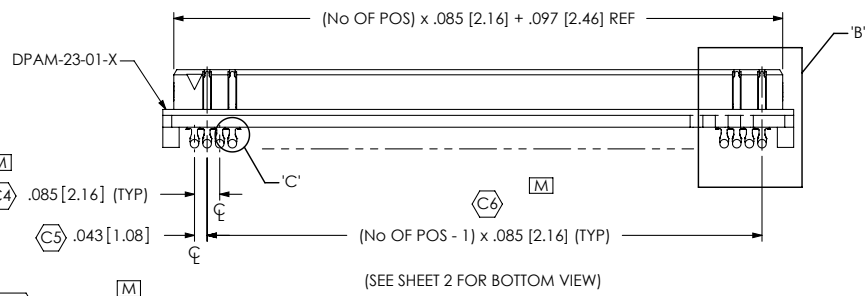
**OPTION**  
 -A: ALIGNMENT PIN (SEE FIG. 2, SHT 3)  
 -K: KAPTON PAD (SEE FIG. 3, SHT 3)  
 -TR: TAPE & REEL (SEE FIG. 4, SHT 4)  
 \*-GP: GUIDE POST (23 POSITION ONLY)

**SOLDER CRIMP MATERIAL**  
 -1: 63%TIN/37%LEAD (USE T-1M26-07.0-H-01)  
 -2: 96.5% TIN/3% SILVER/0.5% COPPER (USE T-1M26-07.0-H-02)

**ROW**  
 -8: 8 DIFFERENTIAL PAIR ROWS  
 -3: 3 DIFFERENTIAL PAIR ROWS

**TABLE 1 - ARRAY SIZE TABLE**

SIZE	DIFFERENTIAL PAIRS PER ARRAY	
	3 ROW	8 ROW
-04	6 PAIRS	16 PAIRS
-06	12 PAIRS	32 PAIRS
-08	18 PAIRS	48 PAIRS
-15	39 PAIRS	104 PAIRS
-23	63 PAIRS	168 PAIRS
-30	84 PAIRS	N/A

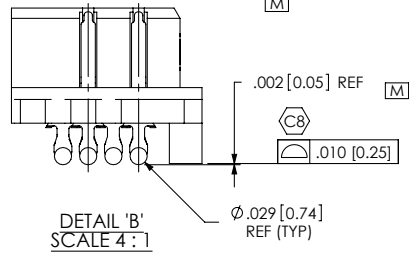


**DETAIL 'C'**  
 SCALE 8 : 1  
 (ALL TERMINALS NOT SHOWN FOR CLARITY)

(SEE SHEET 2 FOR BOTTOM VIEW)

**TABLE 2**

ROW	"A"	"B"	"C"
-8	.700 [17.78]	.968 [24.59]	.234 [5.94]
-3	.200 [5.08]	.468 [11.89]	.165 [4.19]



- NOTES:**
1. (C) REPRESENTS A CRITICAL DIMENSION.
  2. MINIMUM PUSHOUT FORCE: .5 LBS.
  3. PARTS PACKAGED IN TRAYS
  4. SOLDER CRIMP LOCATION MUST BE VERIFIED ON 6 CONSECUTIVE PINS.
  5. SEE RECOMMENDED FOOTPRINT DRAWING FOR STENCIL REQUIREMENTS.

UNLESS OTHERWISE SPECIFIED, DIMENSIONS ARE IN INCHES. TOLERANCES ARE:

DECIMALS	ANGLES
.XX: ± .01 [3]	2°
.XXX: ± .003 [08]	
.XXXX: ± .0015 [038]	

**PROPRIETARY NOTE**  
 THIS DOCUMENT CONTAINS INFORMATION CONFIDENTIAL AND PROPRIETARY TO SAMTEC, INC. AND SHALL NOT BE REPRODUCED OR TRANSFERRED TO OTHER DOCUMENTS OR DISCLOSED TO OTHERS OR USED FOR ANY PURPOSE OTHER THAN THAT WHICH IT WAS OBTAINED WITHOUT THE EXPRESSED WRITTEN CONSENT OF SAMTEC, INC.

**MATERIAL:** DO NOT SCALE DRAWING  
 INSULATOR: L.C.P., COLOR: BLACK  
 TERMINAL: COPPER ALLOY  
 KAPTON: K-1000-800

SHEET SCALE: 2:1  
 F:\DWG\MISC\WMTG\DPAM-XX-07.0-X-X-X-XX-MKT.SLDDRW

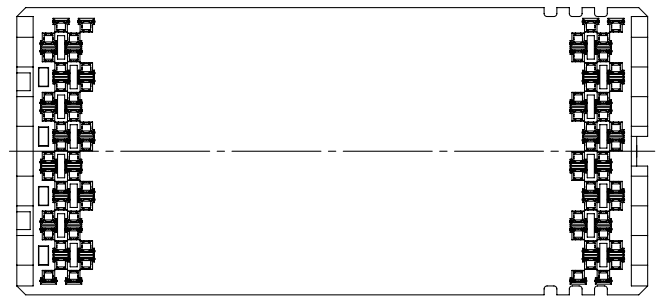
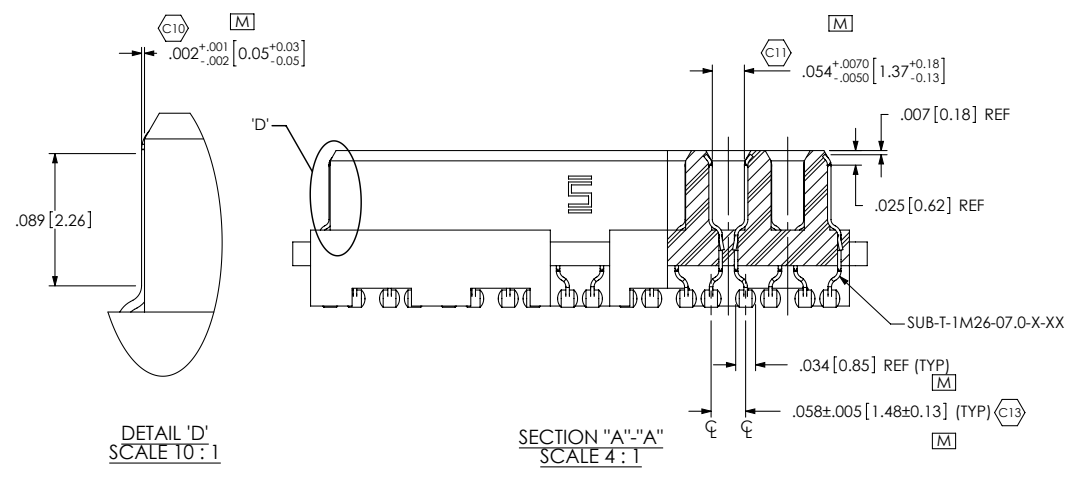
520 PARK EAST BLVD, NEW ALBANY, IN 47150  
 PHONE: 812-944-6733 FAX: 812-948-5047  
 e-Mail: info@SAMTEC.com code: 55322

DESCRIPTION: .085 PITCH DP TERMINAL ASSEMBLY

DWG. NO. **DPAM-XX-07.0-X-X-X-XX**

BY: CHAD F 6/3/2003 SHEET 1 OF 4

REVISION M



(BOTTOM VIEW PROJECTED FROM SHEET 1)  
(ALL TERMINALS NOT SHOWN FOR CLARITY)

<p><b>PROPRIETARY NOTE</b> THIS DOCUMENT CONTAINS INFORMATION CONFIDENTIAL AND PROPRIETARY TO SAMTEC, INC. AND SHALL NOT BE REPRODUCED OR TRANSFERRED TO OTHER DOCUMENTS OR DISCLOSED TO OTHERS OR USED FOR ANY PURPOSE OTHER THAN THAT WHICH IT WAS OBTAINED WITHOUT THE EXPRESSED WRITTEN CONSENT OF SAMTEC, INC.</p> <p>DO NOT SCALE DRAWING</p> <p>SHEET SCALE: 2:1</p>	<p><b>samtec</b> 520 PARK EAST BLVD, NEW ALBANY, IN 47150 PHONE: 812-944-6733 FAX: 812-949-5047 e-Mail: info@SAMTEC.com code: 55322</p>	
	<p>DESCRIPTION: .085 PITCH DP TERMINAL ASSEMBLY</p>	
	<p>DWG. NO. DPAM-XX-07.0-X-X-X-XX</p>	
	<p>BY: CHAD F</p>	<p>6/3/2003</p>

F:\DWG\MISC\MKTG\DPAM-XX-07.0-X-X-X-XX-MKT.SLDDRW

REVISION M

FIG. 2  
 DPAM-23-07.0-H-8-1-A SHOWN  
 (SAME AS FIG. 1, EXCEPT AS SHOWN)  
 [ALL TERMINALS NOT SHOWN FOR CLARITY]

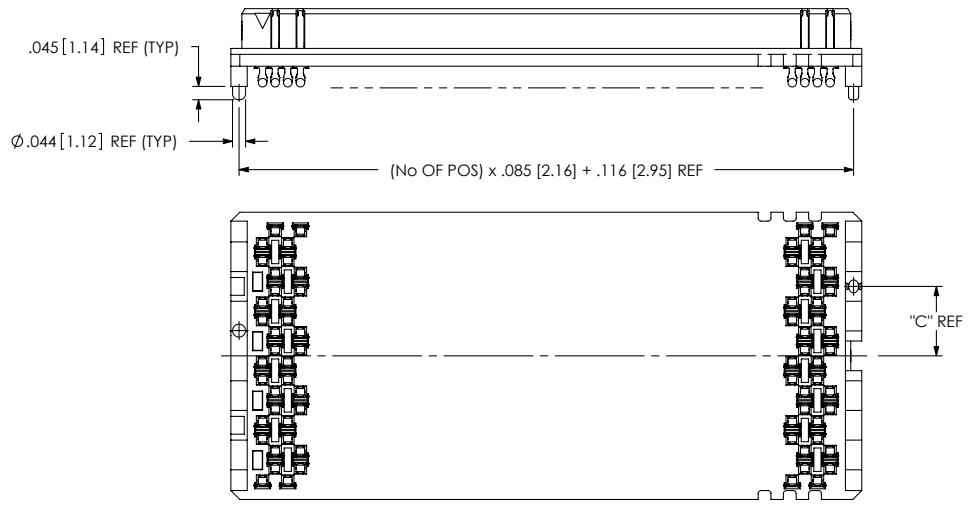


FIG. 3  
 DPAM-23-07.0-H-8-1-A-K SHOWN  
 (SAME AS FIG. 1, EXCEPT AS SHOWN)  
 (ALL TERMINALS NOT SHOWN FOR CLARITY)

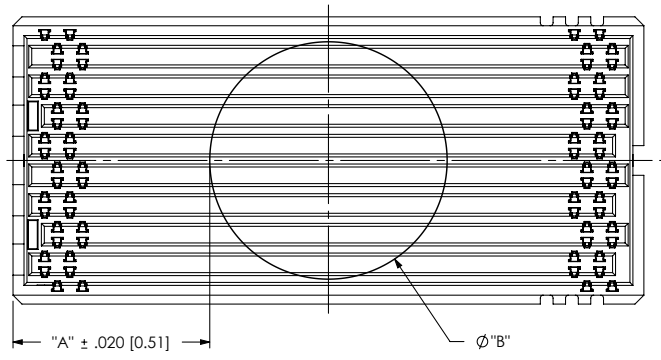
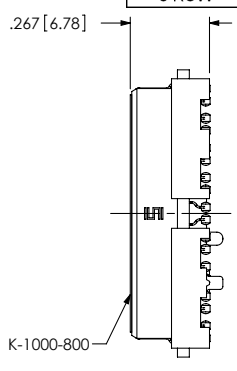


TABLE 2			
ROW OPTION	# OF POSITIONS	DIM "A"	DIA "B"
3 ROW	4,6,8,15,23,30	"A" = ((No OF POS) x .085 [2.16])/2 - .064 [1.63]	.30 [7.5]
8 ROW	4,6	"A" = ((No OF POS) x .085 [2.16])/2 - .314 [7.98]	.30 [7.5]
8 ROW	8,15,23,30	"A" = ((No OF POS) x .085 [2.16])/2 - .314 [7.98]	.80 [20.3]



PROPRIETARY NOTE  
 THIS DOCUMENT CONTAINS INFORMATION  
 CONFIDENTIAL AND PROPRIETARY TO  
 SAMTEC, INC. AND SHALL NOT BE REPRODUCED  
 OR TRANSFERRED TO OTHER DOCUMENTS OR  
 DISCLOSED TO OTHERS OR USED FOR ANY  
 PURPOSE OTHER THAN THAT WHICH IT WAS  
 OBTAINED WITHOUT THE EXPRESSED WRITTEN  
 CONSENT OF SAMTEC, INC.

DO NOT SCALE DRAWING

SHEET SCALE: 2:1



DESCRIPTION: .085 PITCH DP TERMINAL ASSEMBLY

DWG. NO. DPAM-XX-07.0-X-X-X-XX

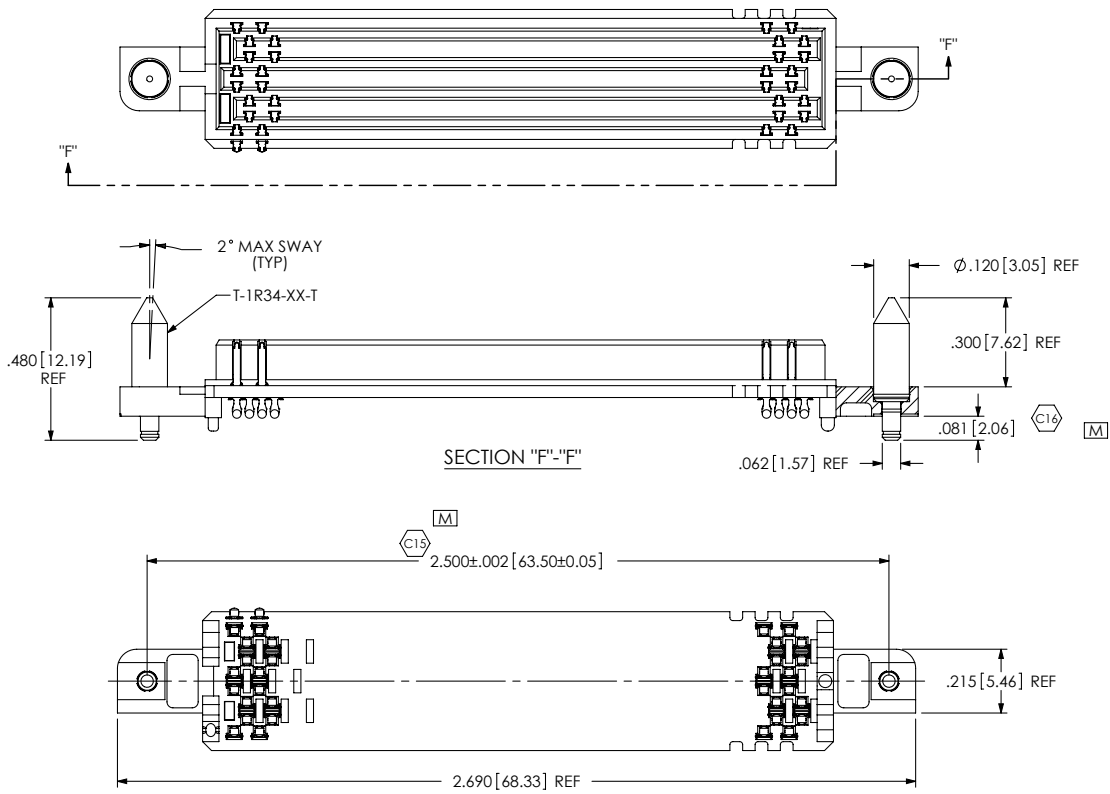
BY: CHAD F 6/3/2003 SHEET 3 OF 4

F:\DWG\MISC\MKTG\DPAM-XX-07.0-X-X-X-XX-MKT.SLDDRW

REVISION M

FIG. 4

\* DPAM-23-07.0-H-3-X-A-GP SHOWN  
 (SAME AS FIG. 1, EXCEPT AS SHOWN)  
 (ALL TERMINALS NOT SHOWN FOR CLARITY)  
 (NOT AVAILABLE ON 8 ROW) (23 POSITION ONLY)  
 \* = NOT RELEASED FOR PRODUCTION



**PROPRIETARY NOTE**  
 THIS DOCUMENT CONTAINS INFORMATION  
 CONFIDENTIAL AND PROPRIETARY TO  
 SAMTEC, INC. AND SHALL NOT BE REPRODUCED  
 OR TRANSFERRED TO OTHER DOCUMENTS OR  
 DISCLOSED TO OTHERS OR USED FOR ANY  
 PURPOSE OTHER THAN THAT WHICH IT WAS  
 OBTAINED WITHOUT THE EXPRESSED WRITTEN  
 CONSENT OF SAMTEC, INC.

DO NOT SCALE DRAWING

SHEET SCALE: 2:1

<b>samtec</b>	
520 PARK EAST BLVD, NEW ALBANY, IN 47150 PHONE: 812-944-6733 FAX: 812-948-5047 e-Mail: info@SAMTEC.com code: 55322	
DESCRIPTION:	.085 PITCH DP TERMINAL ASSEMBLY
DWG. NO.	DPAM-XX-07.0-X-X-X-XX
BY: CHAD F	6/3/2003 SHEET 4 OF 4

F:\DWG\MISC\MKTG\DPAM-XX-07.0-X-X-X-XX-MKT.SLDDRW