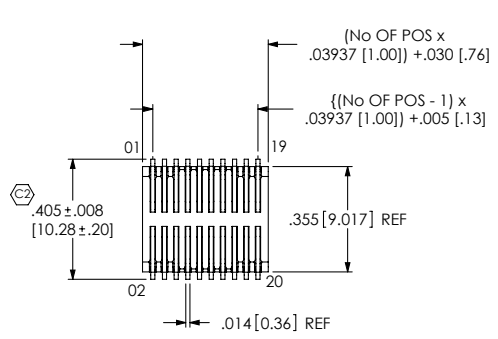


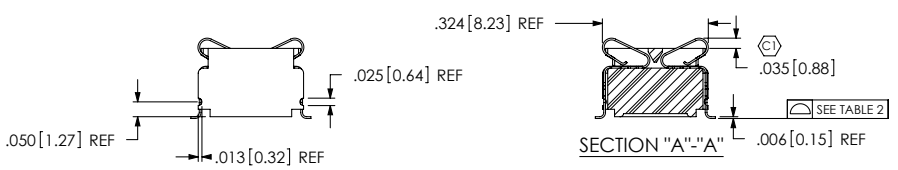
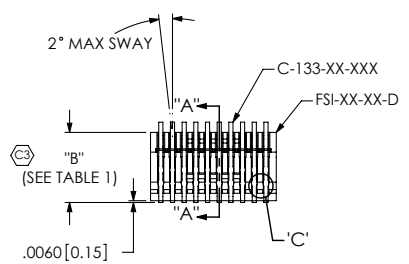
REVISION AM



FSI-1XX-XX-XXX-D-X-XX-XX

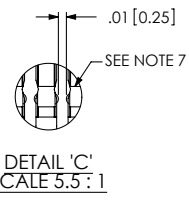
- NO. OF POSITIONS**  
 THREADED: -10, -20, -25, -30, -40, -50  
 NON-THREADED: -05 THRU -50  
 [IN MULTIPLES OF 5]
- BODY HEIGHT**  
 -06: 6mm (USE C-133-02-XXX)  
 -10: 10mm (USE C-133-03-XXX)
- PLATING**  
 -L: .00010 GOLD ON CONTACT AREA, .000100-.000250 TIN ON TAIL (USE C-133-XX-L)  
 -S: .000030 GOLD ON CONTACT AREA, .000100-.000250 TIN ON TAIL (USE C-133-XX-S)  
 -STL: .000030 GOLD ON CONTACT AREA, .000200 TIN LEAD ON TAIL (USE C-133-XX-STL)  
 -LTL: .00010 GOLD ON CONTACT AREA, .000200 TIN LEAD ON TAIL (USE C-133-XX-LTL)  
 -LM: .00010 GOLD ON CONTACT AREA, .000100-.000250 MATTE TIN ON TAIL (USE C-133-XX-L)  
 -SM: .000030 GOLD ON CONTACT AREA, .000100-.000250 MATTE TIN ON TAIL (USE C-133-XX-S)
- ROW SPECIFICATION**  
 -D: DOUBLE ROW  
 FOR -06 BODY: USE FSI-XX-06-D-XX-X  
 FOR -10 BODY: USE FSI-XX-10-D-XX-X
- OPTION**  
 -TR: TAPE & REEL PACKAGING  
 BLANK FOR TUBED PARTS.  
 -P: FOR AVAILABILITY, SEE FIG. 4, SHEET 3)  
 -K: POLYAMIDE FILM PAD  
 (USE K-500-300) (SEE FIG. 5, SHEET 3)  
 (AVAILABLE ONLY ON POSITIONS 40 & 50 WITH ANY THREADED INSERT OPTIONS)
- ALIGNMENT PIN LOCATION**  
 -AT: TOP SIDE (USE FSI-XX-XX-D-AT-X)  
 -AB: BOTTOM SIDE (USE FSI-XX-XX-D-AB-X)  
 -AD: DUAL (TOP & BOTTOM)  
 (USE FSI-XX-XX-D-AD-X, SEE FIG. 2)  
 -LC: LOCKING CLIP (NOT TOOLED AT THIS TIME)  
 BLANK FOR NO ALIGNMENT PIN.
- THREADED INSERT OPTION**  
 -E: THREADED INSERT (ENGLISH)  
 (USE INS-19-2-56-157, SEE FIG. 3, SHT 2)  
 -M: THREADED INSERT (METRIC)  
 (USE INS-19-M2-157-M, SEE FIG. 3, SHT 2)  
 BLANK FOR NON-THREADED INSERT.

FIG. 1  
 (FSI-110-06-XXX-D SHOWN)

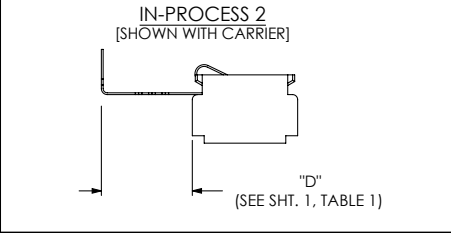
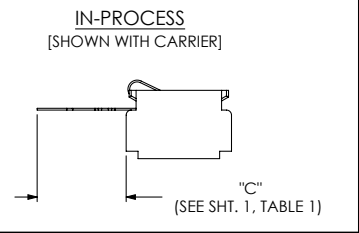
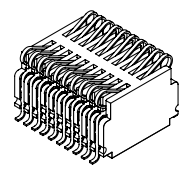


BODY HEIGHT	"B"	"C"	"D"
-06	.236 [6.00]	.450 [11.43]	.158 [4.01]
-10	.394 [10.00]	.450 [11.43]	.307 [7.80]

No. OF POS.	COPLANARITY
0-35	.004 [.10]
40-50	.006 [.15]



- NOTES:
- ⊕ REPRESENTS A CRITICAL DIMENSION.
  - MINIMUM PUSHOUT FORCE: 12 oz.
  - LOAD INSERTS IN THE DIRECTION OF THE ARROW USING THERMAL INSERTION MACHINE. FLUSH TO RECESSED BELOW THE MATING SURFACE.
  - THREADED INSERT MUST BE ABLE TO HANDLE 54 in-oz's OF TORQUE MIN WITHOUT ROTATING OR 'LOOSENING'.
  - THREADED INSERT RETENTION TO BE 50 lb MIN.
  - FOR -05 POS WITH -PPP OPTION, LEADS MAY NOT BE VISIBLE BY SOME OPTICAL MACHINES.
  - HOT BAR FORM AFTER ASSEMBLY (WILL PRODUCE RETENTION FLANGE AS SHOWN).



UNLESS OTHERWISE SPECIFIED, DIMENSIONS ARE IN INCHES. TOLERANCES ARE:  
 DECIMALS ANGLES  
 .XX: ± .01 [.25]  
 .XXX: ± .005 [.13]  
 .XXXX: ± .0020 [.05]

PROPRIETARY NOTE  
 THIS DOCUMENT CONTAINS INFORMATION CONFIDENTIAL AND PROPRIETARY TO SAMTEC, INC. AND SHALL NOT BE REPRODUCED OR TRANSFERRED TO OTHER DOCUMENTS OR DISCLOSED TO OTHERS OR USED FOR ANY PURPOSE OTHER THAN THAT WHICH IT WAS OBTAINED WITHOUT THE EXPRESSED WRITTEN CONSENT OF SAMTEC, INC.

MATERIAL: DO NOT SCALE DRAWING SHEET SCALE: 2:1  
 INSULATOR: LCP, COLOR: BLACK  
 CONTACTS: C-133-02-X BeCu  
 C-133-03-X BeCu  
 INSERT: BRASS

F:\DWG\MISC\MKTG\FSI-1XX-XX-XXX-D-X-XX-XX-MKT.SLDDRW

**samtec**  
 520 PARK EAST BLVD, NEW ALBANY, IN 47150  
 PHONE: 812-944-6733 FAX: 812-948-5047  
 e-Mail: info@SAMTEC.com code: 55322

DESCRIPTION:  
**1mm SINGLE ELEMENT INTERFACE**

DWG. NO.  
**FSI-1XX-XX-XXX-D-X-XX-XX**

BY: BRATCHER 1/29/99 SHEET 1 OF 3

REVISION AM

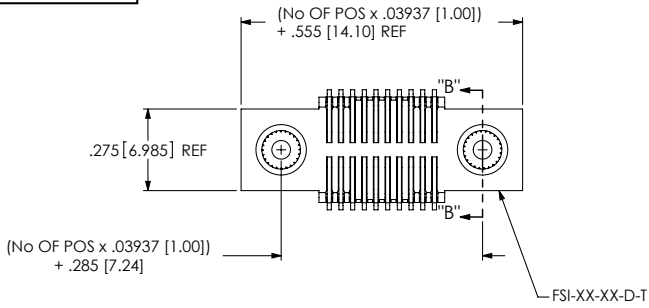


FIG. 3  
-M & -E THREADED OPTIONS  
(FSI-110-06-L-D-M SHOWN)  
(EQUATIONS APPLY TO -10, -20, -25 & -30 ONLY)

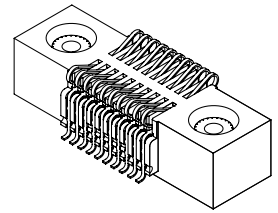
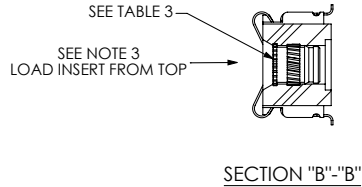
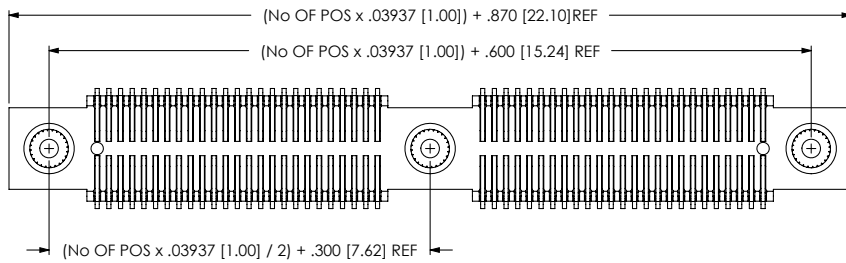
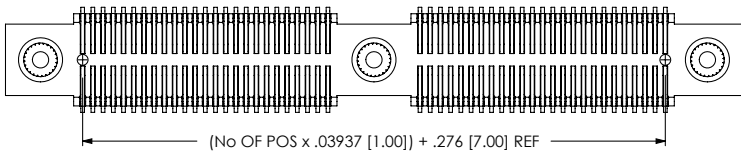


TABLE 3: THREADED INSERT		
OPTION	INSERT	THREAD
-E	INS-19-2-56-157	2 X 56
-M	INS-19-M2-157-N	M2.0 X 4

\*\* METRIC THREADED INSERTS TO BE FLASH NICKEL PLATED



FOR -40- & -50 WITH -M OR -E OPTION  
(FSI-150-06-L-D-M-AD SHOWN)  
**AM**



ALIGNMENT PIN OPTION  
FOR -40- & -50 WITH -M OR -E OPTION  
(FSI-150-XX-L-D-M-AD SHOWN)  
**AM**

**PROPRIETARY NOTE**  
THIS DOCUMENT CONTAINS INFORMATION  
CONFIDENTIAL AND PROPRIETARY TO  
SAMTEC, INC. AND SHALL NOT BE REPRODUCED  
OR TRANSFERRED TO OTHER DOCUMENTS OR  
DISCLOSED TO OTHERS OR USED FOR ANY  
PURPOSE OTHER THAN THAT WHICH IT WAS  
OBTAINED WITHOUT THE EXPRESSED WRITTEN  
CONSENT OF SAMTEC, INC.

DO NOT SCALE DRAWING

SHEET SCALE: 2:1

**samtec**  
520 PARK EAST BLVD, NEW ALBANY, IN 47150  
PHONE: 812-944-6733 FAX: 812-948-5047  
e-Mail: info@SAMTEC.com code: 55322

DESCRIPTION:  
1mm SINGLE ELEMENT INTERFACE

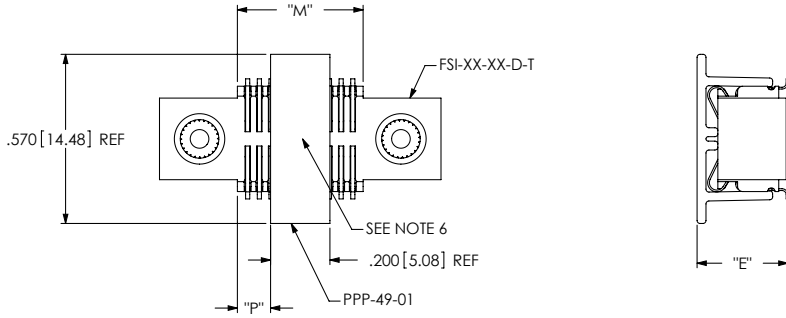
DWG. NO.  
**FSI-1XX-XX-XXX-D-X-XX-XX**

BY: BRATCHER 1/29/99 SHEET 2 OF 3

REVISION AM

**FIG. 4**  
 -P: PICK & PLACE PAD OPTION  
 (FSI-110-06-L-D-M SHOWN)  
 NOT AVAILABLE ON 5 POSITION

NOT AVAILABLE IF POSITION IS 05 AND LEAD STYLE IS 06

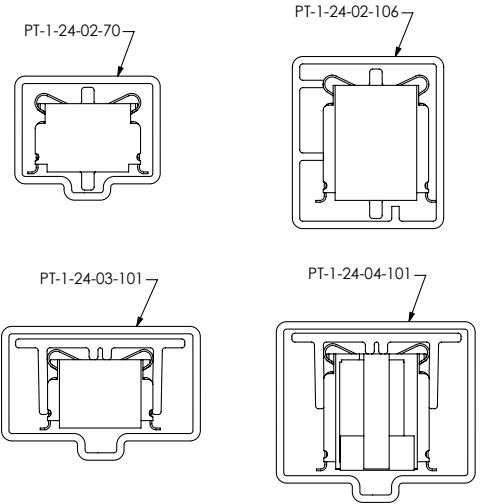


FOR 10 THRU 50 POSITIONS WITH -M OR -E OPTION,  
 -10 THRU -50 WITHOUT -M OR -E OPTION

"M" = (No OF POS x .03937[1.000]) + .030[.76] REF  
 "P" = {("M" - .200[5.08]) / 2} ±.020[.51]

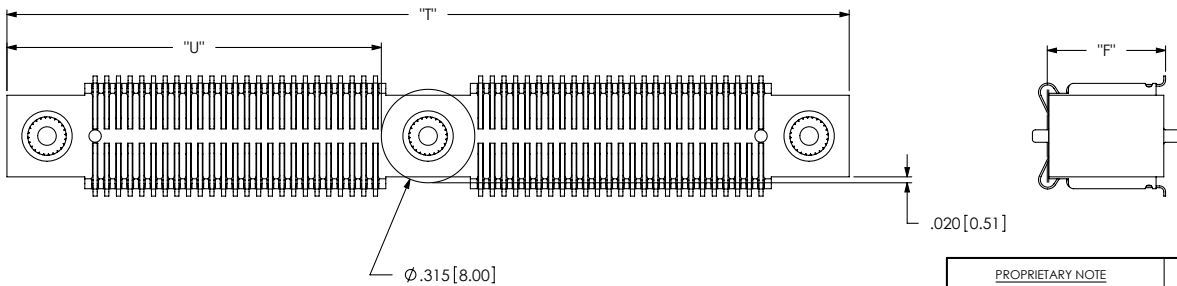
TABLE 4

BODY HEIGHT	"E"	"F"
-06	.306 [7.77]	.241 [6.12]
-10	.464 [11.79]	.399 [10.13]



PACKAGING TABLE

BODY HEIGHT	TUBE	PLUG
-06	PT-1-24-02-70	TP-29
-10	PT-1-24-02-106	TP-13
-06-P	PT-1-24-03-101	TP-03
-10-P	PT-1-24-04-101	TP-13



**FIG. 5**

-K: POLYAMIDE FILM PAD  
 (USE K-500-300)  
 (AVAILABLE ONLY ON POSITIONS  
 40 & 50 WITH -M OR -E OPTION)

"T" = (No OF POS x .03937[1.000]) + .870[22.10] REF  
 "U" = {("T" - .315[8.00]) / 2} ±.020[.51]

**PROPRIETARY NOTE**  
 THIS DOCUMENT CONTAINS INFORMATION  
 CONFIDENTIAL AND PROPRIETARY TO  
 SAMTEC, INC. AND SHALL NOT BE REPRODUCED  
 OR TRANSFERRED TO OTHER DOCUMENTS OR  
 DISCLOSED TO OTHERS OR USED FOR ANY  
 PURPOSE OTHER THAN THAT WHICH IT WAS  
 OBTAINED WITHOUT THE EXPRESSED WRITTEN  
 CONSENT OF SAMTEC, INC.

DO NOT SCALE DRAWING

SHEET SCALE: 2:1

**samtec**

520 PARK EAST BLVD, NEW ALBANY, IN 47150  
 PHONE: 812-944-6733 FAX: 812-948-5047  
 e-Mail: info@SAMTEC.com code: 55322

DESCRIPTION: 1mm SINGLE ELEMENT INTERFACE

DWG. NO. FSI-1XX-XX-XXX-D-X-XX-XX

BY: BRATCHER 1/29/99 SHEET 3 OF 3

F:\DWG\MISC\MKTG\FSI-1XX-XX-XXX-D-X-XX-XX-MKT.SLDDRW