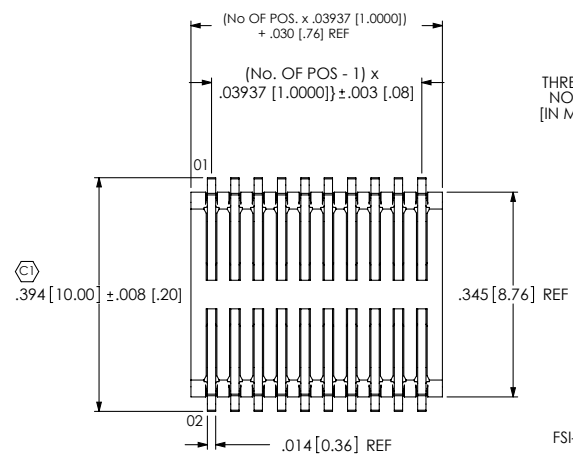


REVISION Y

DO NOT SCALE FROM THIS PRINT

# FSI-1XX-03-X-D-X-XX-XX



**NO OF POSITIONS**  
 THREADED: -10, -20, -30, -40, -50  
 NON-THREADED: -05 THRU -50  
 (IN MULTIPLES OF 5) (SEE NOTE 8)

**BODY HEIGHT**  
 -03: 3mm HEIGHT  
 (USE C-133-01-X)

**PLATING**  
 -G: GOLD  
 (USE C-133-01-G)  
 -H: HEAVY GOLD  
 (USE C-133-01-H)

**ROW SPECIFICATION**  
 -D: DOUBLE  
 (USE FSI-XX-03-D)

**OPTIONS**

- TR: TAPE & REEL PACKAGING (BLANK FOR TUBED PARTS)
- K: POLYAMIDE FILM PAD (USE K-500-300) (SEE FIGS 4 & 5, SHEET 3)
- SD: SCREW DOWN OPTION (USE THS-4-40-.560-XX) (AVAILABLE ON 10, 20 & 30 POS. WITH -AD ONLY; SEE SHEET 4) (SEE NOTE 7)

**OPTION UNAVAILABLE WITH ANY THREADED INSERT OPTION**

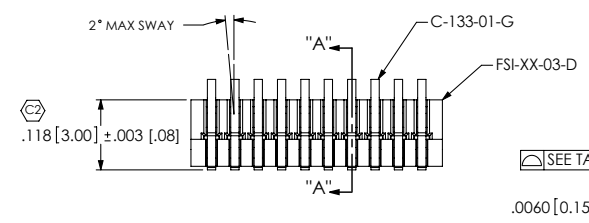
**ALIGNMENT PIN OPTION**

- AT: TOP SIDE (USE FSI-XX-03-D-AT-X)
- AB: BOTTOM SIDE (USE FSI-XX-03-D-AB-X)
- AD: DUAL (TOP & BOTTOM) (USE FSI-XX-03-D-AD-X, SEE FIG. 2)
- LC: LOCKING CLIP (NOT TOoled AT THIS TIME) BLANK FOR NO ALIGNMENT PIN.

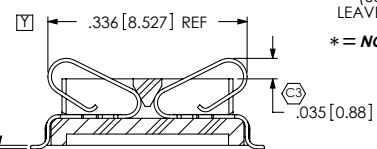
**THREADED INSERT OPTION**

- E: THREADED INSERT (ENGLISH) (USE INS-C-2-56-100, SEE FIG. 3, SHT 2)
- M: THREADED INSERT (METRIC) (USE INS-C-M2-100-N, SEE FIG. 3, SHT 2)
- LEAVE BLANK FOR NO THREADED INSERT.

**\* = NOT RELEASED FOR PRODUCTION**



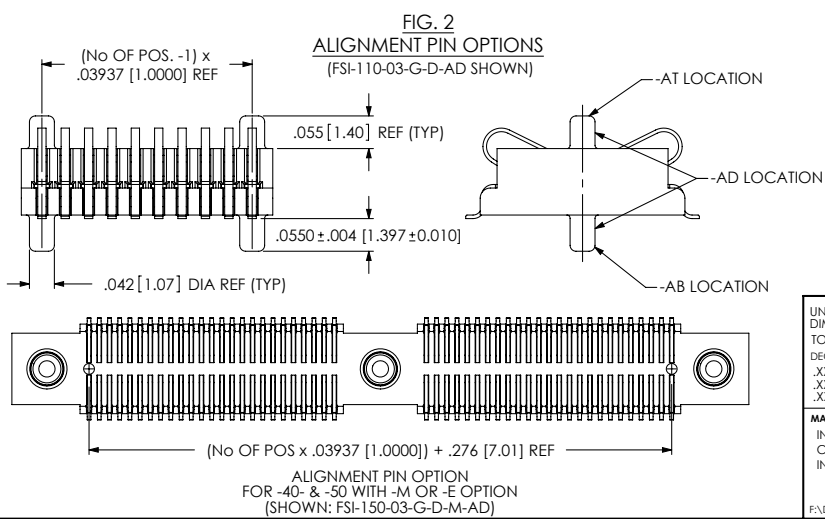
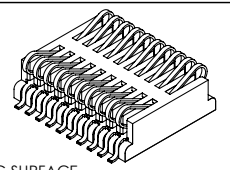
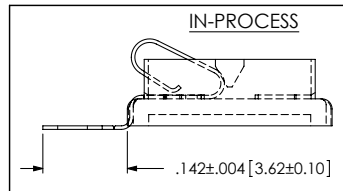
SEE TABLE 1  
 .0060 [0.152] REF



No. OF POS.	MAX COPLANARITY
0-35	.004 [.10]
40-50	.006 [.15]

**NOTES:**

1.  $\text{C4}$  REPRESENTS A CRITICAL DIMENSION.
2. MINIMUM PUSHOUT FORCE: 12 oz.
3. LOAD INSERTS IN DIRECTION OF THE ARROW USING HAND LOAD THERMAL INSERTION PRESS.
4. THREADED INSERT MUST BE ABLE TO HANDLE 20 in-oz's OF TORQUE MIN WITHOUT ROTATING OR "LOOSENING".
5. THREADED INSERT RETENSION TO BE 7lbs. MIN.
6. THREADED INSERT TO BE FLUSH TO .005 [0.13] BELOW HOUSING SURFACE.
7. -SD OPTION: RETENTION TO BE 3lb MIN AND MUST WITHSTAND 6 in-oz's OF TORQUE.
8. APPLICATIONS REQUIRING 40-50 POSITIONS WITHOUT THREADED INSERTS, PLEASE CONTACT SAMTEC INERCONNECT PROCESSING GROUP.



ALIGNMENT PIN OPTION FOR -40- & -50 WITH -M OR -E OPTION (SHOWN: FSI-150-03-G-D-M-AD)

UNLESS OTHERWISE SPECIFIED, DIMENSIONS ARE IN INCHES. TOLERANCES ARE:  
 DECIMALS ANGLES  
 .XX: ± .01 [2]  
 .XXX: ± .005 [.13]  
 .XXXX: ± .002 [.050]

PROPRIETARY NOTE  
 THIS DOCUMENT CONTAINS INFORMATION CONFIDENTIAL AND PROPRIETARY TO SAMTEC, INC. AND SHALL NOT BE REPRODUCED OR TRANSFERRED TO OTHER DOCUMENTS OR DISCLOSED TO OTHERS OR USED FOR ANY PURPOSE OTHER THAN THAT WHICH IT WAS OBTAINED WITHOUT THE EXPRESSED WRITTEN CONSENT OF SAMTEC, INC.

MATERIAL: DO NOT SCALE DRAWING SHEET SCALE: 4:1  
 INSULATOR: VECTRA E130I  
 CONTACT: BeCu  
 INSERT: BRASS

F:\DWG\MISC\mktg\FSI-1XX-03-X-D-X-XX-XX-MKT.SLDDRW

520 PARK EAST BLVD, NEW ALBANY, IN 47150  
 PHONE: 812-944-6733 FAX: 812-948-5047  
 e-Mail: info@SAMTEC.com code: 55322

DESCRIPTION: 1mm SINGLE ELEMENT INTERFACE

DWG. NO. FSI-1XX-03-X-D-X-XX-XX

BY: BRATCHER 1/27/99 SHEET 1 OF 4

REVISION Y

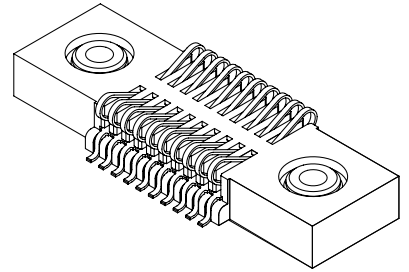
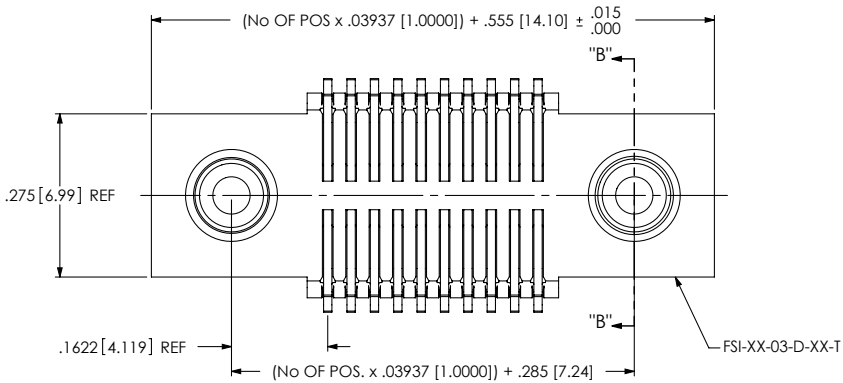
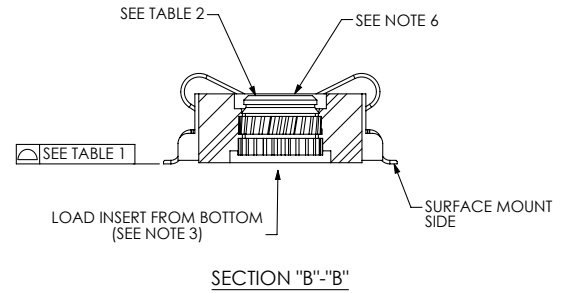
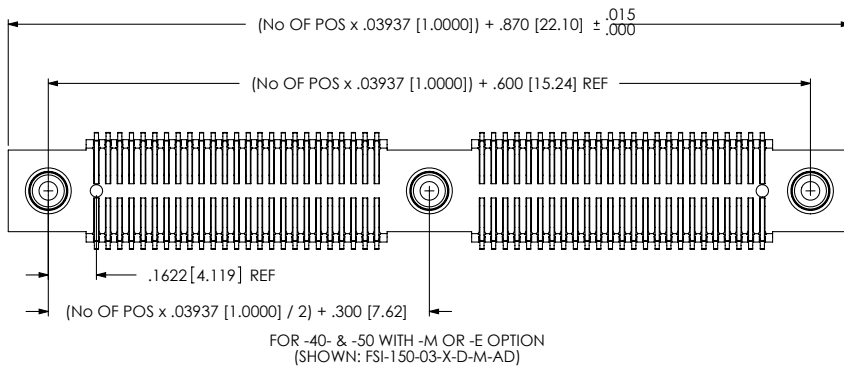
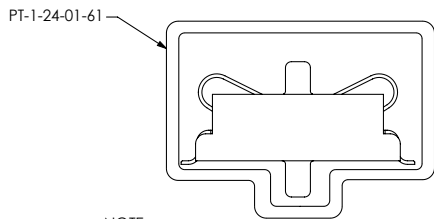


FIG. 3  
-M & -E: THREADED OPTIONS  
(FSI-110-03-G-D-M SHOWN)  
(EQUATIONS APPLY TO -10, -20 & -30 ONLY)



OPTION	INSERT	THREAD
-E	INS-C-2-56-100	2 x 56
-M	INS-C-M2-100-N	M2.0 x 4

PACKAGING VIEW



NOTE:  
PARTS ARE TO BE PACKAGED IN PT-1-24-01-61 TUBES WITH TWO TP-03 PLUGS PER TUBE.

F:\DWG\MISC\mktg\FSI-1XX-03-X-D-X-XX-MKT.SLDDRW

PROPRIETARY NOTE

THIS DOCUMENT CONTAINS INFORMATION CONFIDENTIAL AND PROPRIETARY TO SAMTEC, INC. AND SHALL NOT BE REPRODUCED OR TRANSFERRED TO OTHER DOCUMENTS OR DISCLOSED TO OTHERS OR USED FOR ANY PURPOSE OTHER THAN THAT WHICH IT WAS OBTAINED WITHOUT THE EXPRESSED WRITTEN CONSENT OF SAMTEC, INC.

DO NOT SCALE DRAWING

SHEET SCALE: 4:1

**samtec**

520 PARK EAST BLVD, NEW ALBANY, IN 47150  
PHONE: 812-944-6733 FAX: 812-948-5047  
e-Mail: info@SAMTEC.com code: 55322

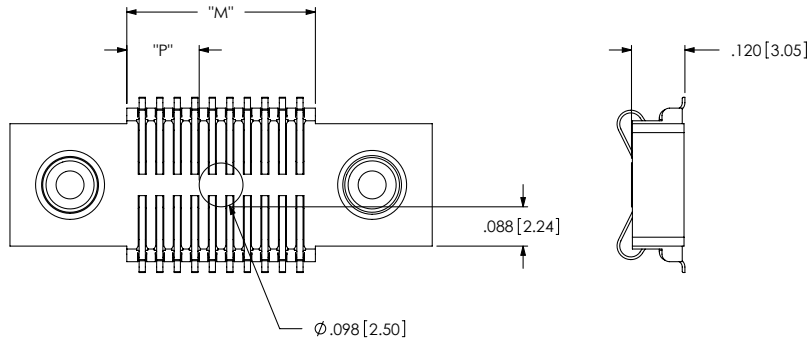
DESCRIPTION: 1mm SINGLE ELEMENT INTERFACE

DWG. NO. FSI-1XX-03-X-D-X-XX-XX

BY: BRATCHER 1/27/99 SHEET 2 OF 4

REVISION Y

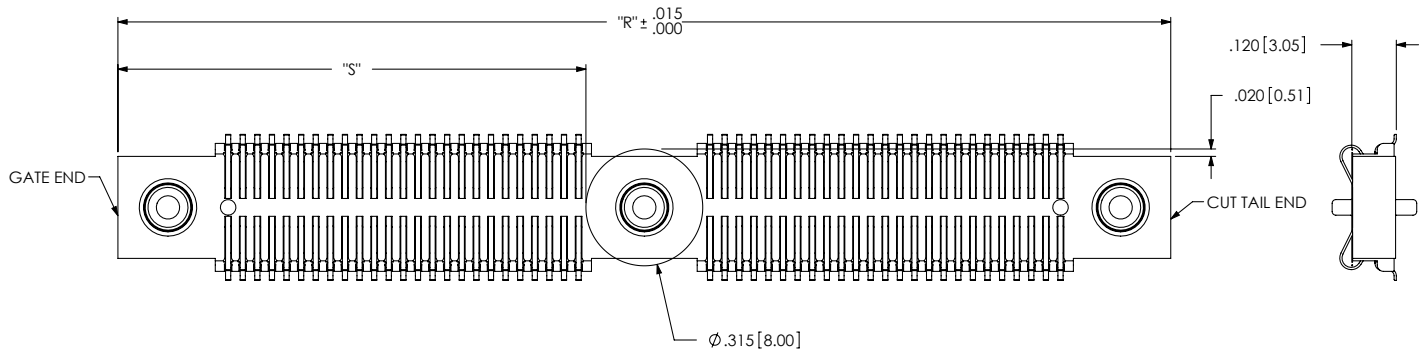
FIG. 4  
 -K: POLYAMIDE FILM PAD  
 (.098 [2.50] DIA PAD USED ON ALL POSITIONS  
 EXCEPT -40 & -50 POSITIONS WITH  
 THREADED INSERT OPTION)



$$"M" = (\text{No OF POS} \times .03937[1.000]) + .030[.76] \text{ REF}$$

$$"P" = \{("M" - .098[2.50]) / 2\} \pm .020[.51]$$

FIG. 5  
 -K: POLYAMIDE FILM PAD  
 (.315 [8.00] DIA PAD USED ONLY ON  
 -40 & -50 POSITIONS WITH  
 THREADED INSERT OPTION)



$$"R" = (\text{No OF POS} \times .03937[1.000]) + .870[22.10] \text{ REF}$$

$$"S" = \{("R" - .295[7.50]) / 2\} \pm .020[.51]$$

PROPRIETARY NOTE  
 THIS DOCUMENT CONTAINS INFORMATION  
 CONFIDENTIAL AND PROPRIETARY TO  
 SAMTEC, INC. AND SHALL NOT BE REPRODUCED  
 OR TRANSFERRED TO OTHER DOCUMENTS OR  
 DISCLOSED TO OTHERS OR USED FOR ANY  
 PURPOSE OTHER THAN THAT WHICH IT WAS  
 OBTAINED WITHOUT THE EXPRESSED WRITTEN  
 CONSENT OF SAMTEC, INC.

DO NOT SCALE DRAWING

SHEET SCALE: 3:1

**samtec**

520 PARK EAST BLVD, NEW ALBANY, IN 47150  
 PHONE: 812-944-6733 FAX: 812-948-5047  
 e-Mail: info@SAMTEC.com code: 55322

DESCRIPTION: 1mm SINGLE ELEMENT INTERFACE

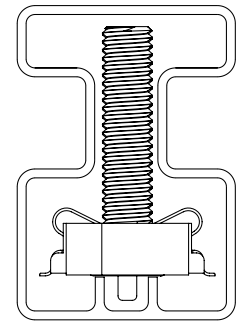
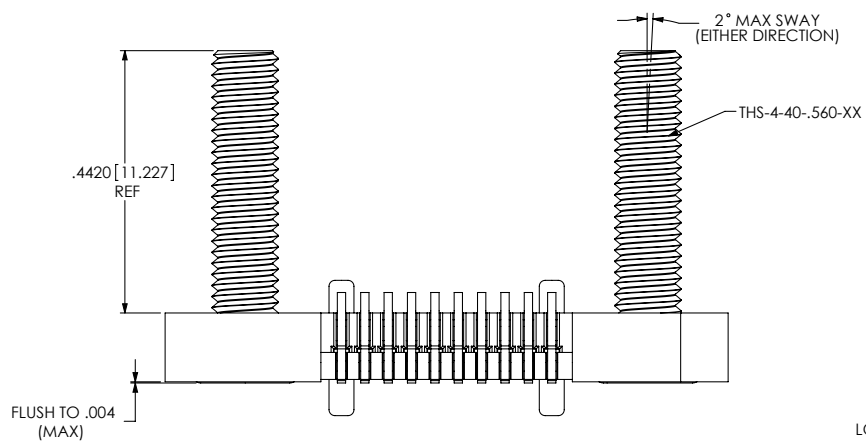
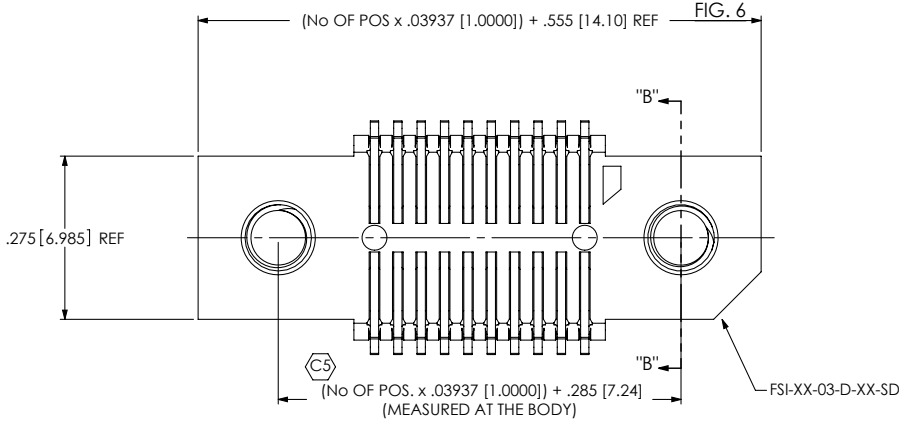
DWG. NO. FSI-1XX-03-X-D-X-XX-XX

BY: BRATCHER 1/27/99 SHEET 3 OF 4

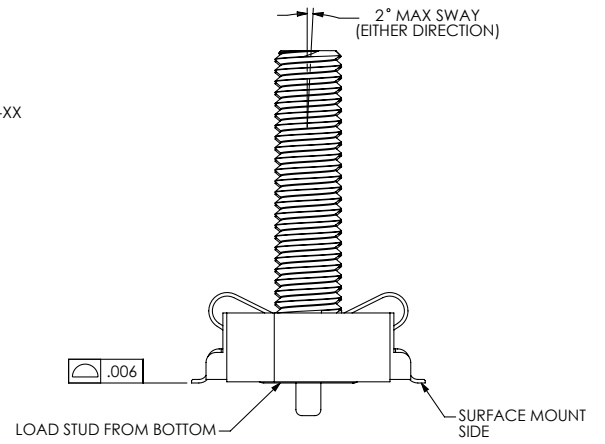
F:\DWG\MISC\mktg\FSI-1XX-03-X-D-X-XX-XX-MKT.SLDDRW

REVISION Y

-SD: SCREW DOWN OPTION  
 (FSI-110-03-G-D-AD-SD SHOWN)  
 (AVAILABLE IN POS -10, -20 & -30 WITH -AD OPTION ONLY)  
**OPTION UNAVAILABLE WITH  
 ANY THREADED INSERT OPTION**



NOTE:  
 PARTS ARE TO BE PACKAGED IN PT-FSI001-03-SD  
 TUBES WITH TWO TP-03 PLUGS PER TUBE.



**PROPRIETARY NOTE**  
 THIS DOCUMENT CONTAINS INFORMATION  
 CONFIDENTIAL AND PROPRIETARY TO  
 SAMTEC, INC. AND SHALL NOT BE REPRODUCED  
 OR TRANSFERRED TO OTHER DOCUMENTS OR  
 DISCLOSED TO OTHERS OR USED FOR ANY  
 PURPOSE OTHER THAN THAT WHICH IT WAS  
 OBTAINED WITHOUT THE EXPRESSED WRITTEN  
 CONSENT OF SAMTEC, INC.

DO NOT SCALE DRAWING  
 SHEET SCALE: 3:1

**samtec**  
 520 PARK EAST BLVD, NEW ALBANY, IN 47150  
 PHONE: 812-944-6733 FAX: 812-948-5047  
 e-Mail: info@SAMTEC.com code: 55322

DESCRIPTION: 1mm SINGLE ELEMENT INTERFACE  
 DWG. NO. FSI-1XX-03-X-D-X-XX-XX  
 BY: BRATCHER 1/27/99 SHEET 4 OF 4

F:\DWG\MISC\mktg\FSI-1XX-03-X-D-X-XX-MKT.SLDDRW