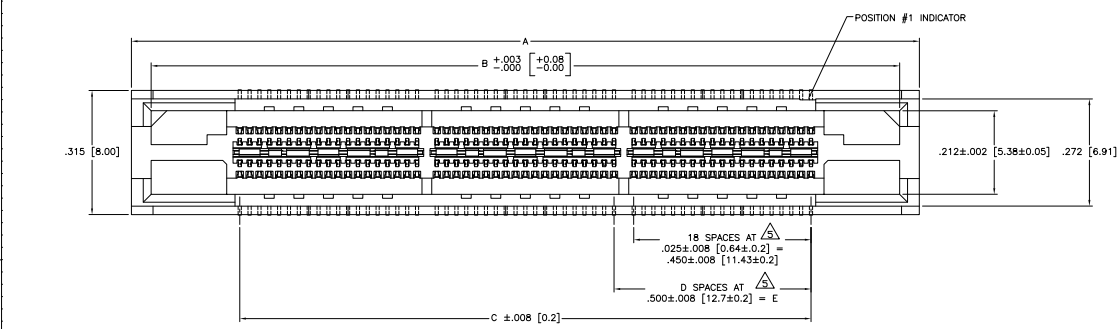
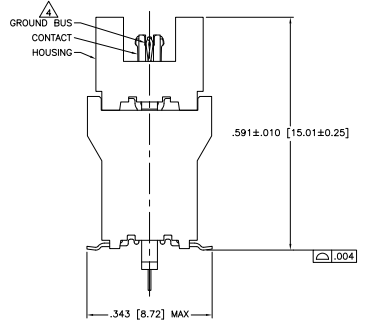
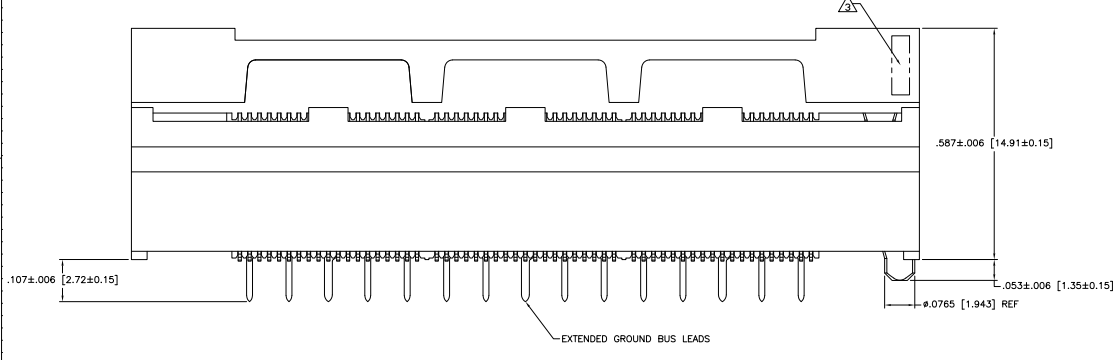


THIS DRAWING IS UNPUBLISHED. RELEASED FOR PRODUCTION BY TYSER ELECTRONICS CORPORATION. ALL RIGHTS RESERVED.

REV	DATE	DESCRIPTION	BY	CHK	APP
00	AD				
D		REVISED PER ECO-08-00465			



- △ HOUSING: LIQUID CRYSTAL POLYMER, BLACK. CONTACTS: HIGH RELIABILITY COPPER ALLOY. GROUND BUSES: PHOSPHOR BRONZE ALLOY, UNS C51100.
- △ CONTACTS & GROUND BUSES: NICKEL UNDERPLATE ALL OVER, MATING SURFACE PLATED TO MEET LEVEL 2 PERFORMANCE REQUIREMENTS OF TE PRODUCT SPECIFICATION 108-1422. SOLDER TAILS PLATED TIN-LEAD.
- △ DATE CODE MARKED IN AREA INDICATED ON SIDE OPPOSITE POSITION #1.
- △ ONE GROUND BUS WITH 5 TAILS PER EACH MODULE.
- △ TOLERANCE NON-ACCUMULATIVE.
- △ FOR SLIP-FIT APPLICATIONS, ORIENTATION HOLE TO BE $\phi .079 \pm [\pm 2.00 \pm 0.03]$.
- △ FOR CONNECTORS OF 190 POSITIONS AND LARGER, THE CONNECTORS INTEGRAL GROUND BUS RETENTION FEATURE COMPENSATES FOR INHERENT BOW IN THE HOUSING. ONCE THE CONNECTOR IS PLACED ON THE PCB, COPLANARITY IS HELD GO 0.1 [0.04].
- △ PRELIMINARY - NOT RELEASED FOR PRODUCTION.



SEE SHEET 2 FOR RECOMMENDED PC BOARD LAYOUT AND PACKAGING DETAIL

△ NO	4.724	(120)	3.000	(76.2)	6	3.450	(87.63)	3.900	(99.06)	4.000	(101.6)	266	1-767145-4
△ NO	4.724	(120)	2.500	(63.5)	5	2.950	(74.93)	3.400	(86.36)	3.500	(88.9)	228	1-767145-3
△ NO	4.094	(104)	2.000	(50.8)	4	2.450	(62.23)	2.900	(73.66)	3.000	(76.2)	190	1-767145-2
△ NO	3.465	(88)	1.500	(38.1)	3	1.950	(49.53)	2.400	(60.96)	2.500	(63.5)	152	1-767145-1
△ NO	2.835	(72)	1.000	(25.4)	2	1.450	(36.83)	1.900	(48.26)	2.000	(50.8)	114	1-767145-0
△ NO	2.205	(56)	.500	(12.7)	1	.950	(24.13)	1.400	(35.56)	1.500	(38.1)	76	767145-9
△ NO	1.732	(44)	.000	(0)	0	.450	(11.43)	.900	(22.86)	1.000	(25.4)	38	767145-8
△ YES	4.724	(120)	3.000	(76.2)	6	3.450	(87.63)	3.900	(99.06)	4.000	(101.6)	266	767145-7
△ YES	4.724	(120)	2.500	(63.5)	5	2.950	(74.93)	3.400	(86.36)	3.500	(88.9)	228	767145-6
△ YES	4.094	(104)	2.000	(50.8)	4	2.450	(62.23)	2.900	(73.66)	3.000	(76.2)	190	767145-5
△ YES	3.465	(88)	1.500	(38.1)	3	1.950	(49.53)	2.400	(60.96)	2.500	(63.5)	152	767145-4
△ YES	2.835	(72)	1.000	(25.4)	2	1.450	(36.83)	1.900	(48.26)	2.000	(50.8)	114	767145-3
△ YES	2.205	(56)	.500	(12.7)	1	.950	(24.13)	1.400	(35.56)	1.500	(38.1)	76	767145-2
△ YES	1.732	(44)	.000	(0)	0	.450	(11.43)	.900	(22.86)	1.000	(25.4)	38	767145-1

VACUUM COVER INCLUDED		F	E	D	C	B	A	NO OF POS	PART NUMBER
		F	E	D	C	B	A		

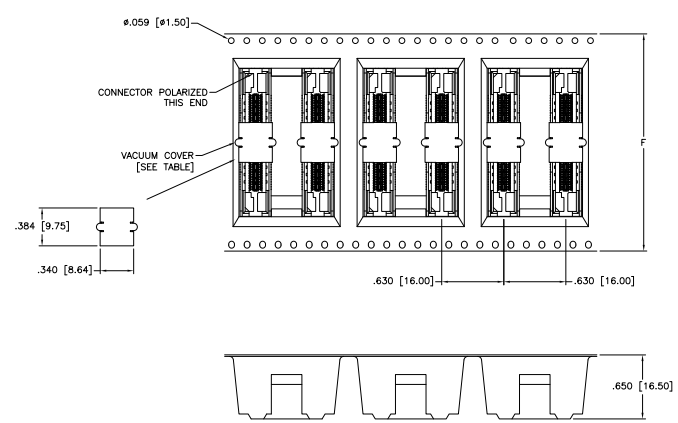
THIS DRAWING IS A CONTROLLED DOCUMENT. TYSER ELECTRONICS CORPORATION, HARRISBURG, PA 17105-3608.

RECEIPTABLE ASSEMBLY, 356 [9.02] VERTICAL, .025 [0.64] CL, GULL WING LEADS, POCKET TAPE PACKAGED, MICTOR

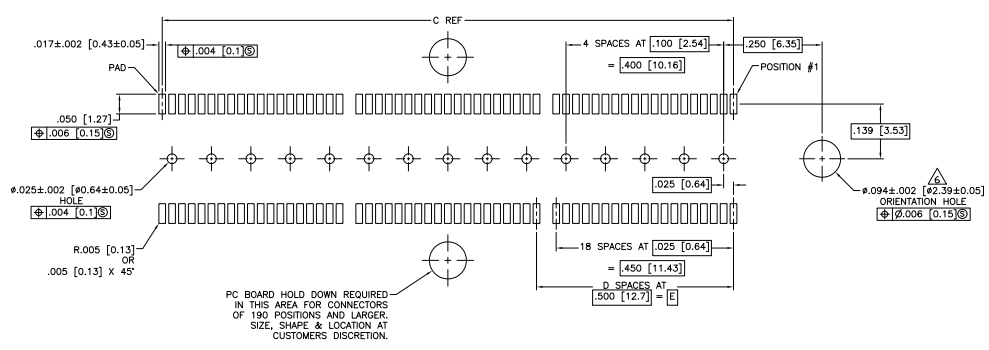
SIZE ONE SIZE DRAWING NO. A1 [00779] G=767145

CUSTOMER DRAWING. SHEET 8.1 OF 1 2 REV D

REV	DATE	BY	CHKD	DESCRIPTION
00	AD			SEE SHEET 1



PACKAGING DETAIL Δ
 SCALE 2:1
 DIMENSIONS ARE FOR REFERENCE



RECOMMENDED PC BOARD LAYOUT
 (VIEWED FROM CONNECTOR SIDE)

THIS DRAWING IS A CONTROLLED DOCUMENT		REV. 00	DATE 08-2008	BY AD	CHKD
DRAWING NO. 000000		REV. 00	DATE 08-2008	BY AD	CHKD
DESCRIPTION: RECEPTACLE ASSEMBLY, .350 [9.02] VERTICAL, .025 [0.64] CL, GULL WING LEADS, POCKET TAPE PACKAGED, MICTOR		REV. 00	DATE 08-2008	BY AD	CHKD
CUSTOMER DRAWING		REV. 00	DATE 08-2008	BY AD	CHKD