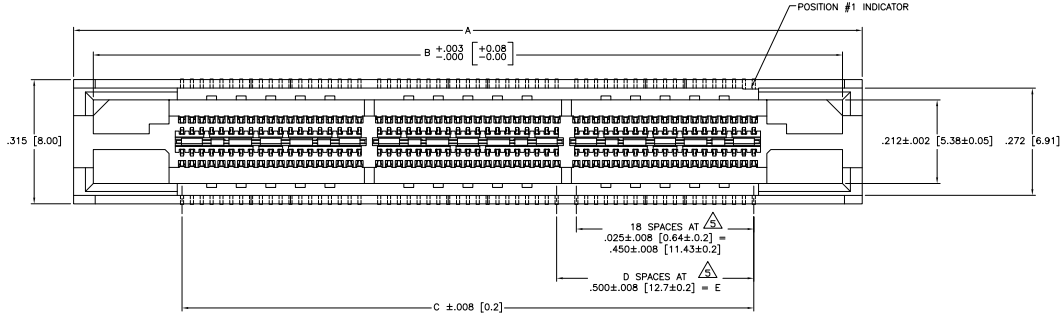
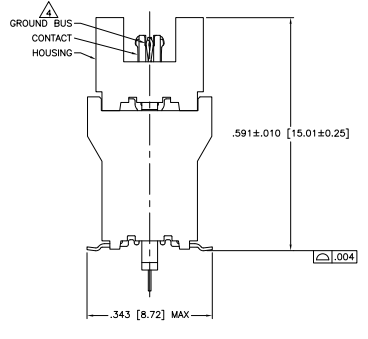
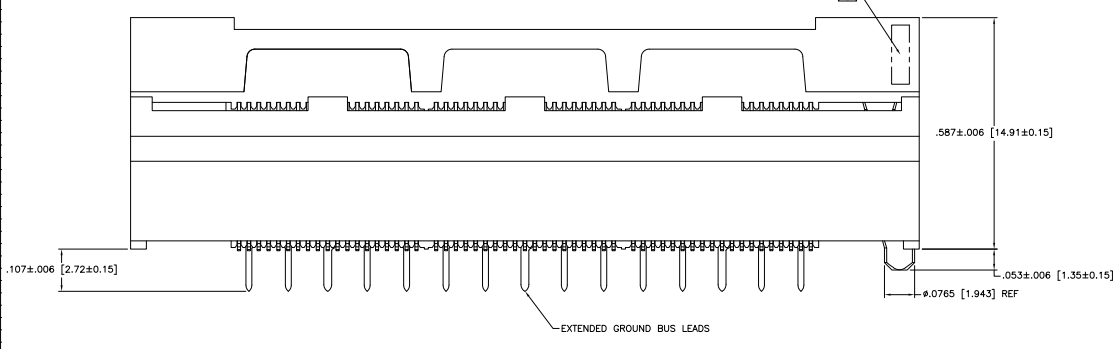


THIS DRAWING IS UNPUBLISHED. ALL RIGHTS RESERVED.  
 © 2008 BY TDS ELECTRONICS CORPORATION

REV	DATE	DESCRIPTION	BY	CHK	APP
B		REVISED PER ECO-08-00945	STAMFORD	DH	DD
BT		REVISED PER ECO-08-007900	STAMFORD	AEC	DD



- △ HOUSING: LIQUID CRYSTAL POLYMER, BLACK. CONTACTS: HIGH RELIABILITY COPPER ALLOY. GROUND BUSES: PHOSPHOR BRONZE ALLOY, UNS C51100.
- △ CONTACTS & GROUND BUSES: NICKEL UNDERPLATE ALL OVER, MATING SURFACE PLATED TO MEET LEVEL 2 PERFORMANCE REQUIREMENTS OF TE PRODUCT SPECIFICATION 108-1422. SOLDER TAILS PLATED MATTE TIN.
- △ DATE CODE MARKED IN AREA INDICATED ON SIDE OPPOSITE POSITION #1.
- △ ONE GROUND BUS WITH 5 TAILS PER EACH MODULE.
- △ TOLERANCE NON-ACCUMULATIVE.
- △ FOR SLIP-FIT APPLICATIONS, ORIENTATION HOLE TO BE  $\pm 0.079 \pm \begin{matrix} [92.00 \pm 0.03] \end{matrix}$ .
- △ FOR CONNECTORS OF 190 POSITIONS AND LARGER, THE CONNECTORS INTEGRAL GROUND BUS RETENTION FEATURE COMPENSATES FOR INHERENT BOW IN THE HOUSING. ONCE THE CONNECTOR IS PLACED ON THE PCB, COPLANARITY IS HELD GO 0.1  $[.004]$ .
- △ PRELIMINARY - NOT RELEASED FOR PRODUCTION.



SEE SHEET 2 FOR RECOMMENDED PC BOARD LAYOUT AND PACKAGING DETAIL

△ NO	4.724	(120)	3.000	(76.2)	6	3.450	(87.63)	3.900	(99.06)	4.000	(101.6)	266	1-5767145-4
△ NO	4.724	(120)	2.500	(63.5)	5	2.950	(74.93)	3.400	(86.36)	3.500	(88.9)	228	1-5767145-3
△ NO	4.094	(104)	2.000	(50.8)	4	2.450	(62.23)	2.900	(73.66)	3.000	(76.2)	190	1-5767145-2
△ NO	3.465	(88)	1.500	(38.1)	3	1.950	(49.53)	2.400	(60.96)	2.500	(63.5)	152	1-5767145-1
△ NO	2.835	(72)	1.000	(25.4)	2	1.450	(36.83)	1.900	(48.26)	2.000	(50.8)	114	1-5767145-0
△ NO	2.205	(56)	.500	(12.7)	1	.950	(24.13)	1.400	(35.56)	1.500	(38.1)	76	5767145-9
△ NO	1.732	(44)	.000	(0)	0	.450	(11.43)	.900	(22.86)	1.000	(25.4)	38	5767145-8
△ YES	4.724	(120)	3.000	(76.2)	6	3.450	(87.63)	3.900	(99.06)	4.000	(101.6)	266	5767145-7
△ YES	4.724	(120)	2.500	(63.5)	5	2.950	(74.93)	3.400	(86.36)	3.500	(88.9)	228	5767145-6
△ YES	4.094	(104)	2.000	(50.8)	4	2.450	(62.23)	2.900	(73.66)	3.000	(76.2)	190	5767145-5
△ YES	3.465	(88)	1.500	(38.1)	3	1.950	(49.53)	2.400	(60.96)	2.500	(63.5)	152	5767145-4
△ YES	2.835	(72)	1.000	(25.4)	2	1.450	(36.83)	1.900	(48.26)	2.000	(50.8)	114	5767145-3
△ YES	2.205	(56)	.500	(12.7)	1	.950	(24.13)	1.400	(35.56)	1.500	(38.1)	76	5767145-2
△ YES	1.732	(44)	.000	(0)	0	.450	(11.43)	.900	(22.86)	1.000	(25.4)	38	5767145-1
VACUUM COVER INCLUDED	F	E	D	C	B	A	NO OF POS	PART NUMBER					

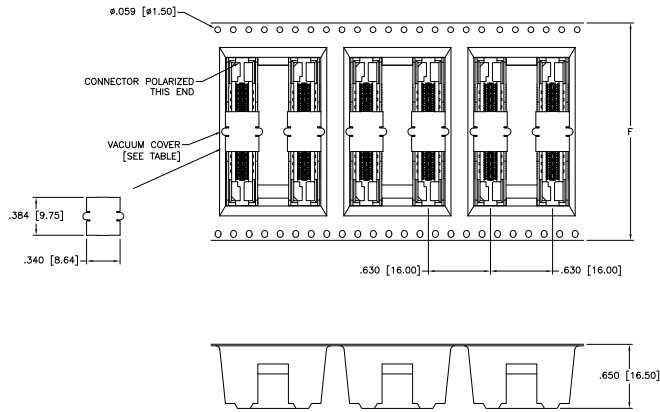
THIS DRAWING IS A CONTROLLED DOCUMENT.

REVISIONS: 1. UNBELLA 28 OCT 84; 2. DIXON 28 OCT 84; 3. DIXON 28 OCT 84.

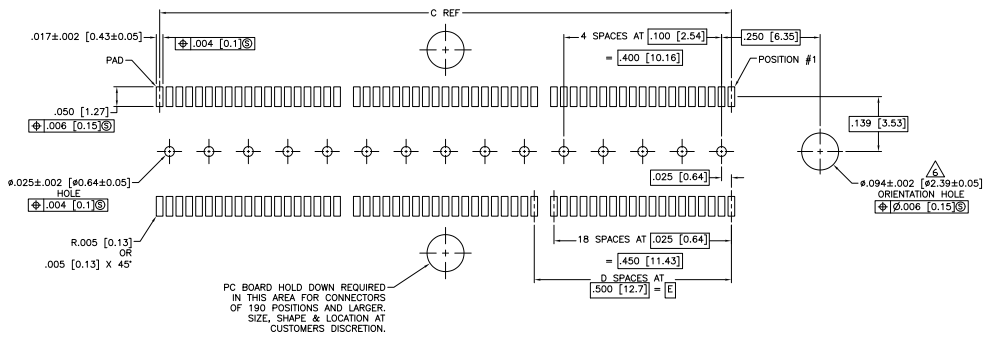
RECEPTACLE ASSEMBLY, .350 [9.02] VERTICAL, .225 [5.64] CL, GULL WING LEADS, POCKET TAPE PACKAGED, MICRO

SIZE: A1 00779 (G)=5767145

CUSTOMER DRAWING



PACKAGING DETAIL  $\Delta$   
 SCALE 2:1  
 DIMENSIONS ARE FOR REFERENCE



RECOMMENDED PC BOARD LAYOUT  
 (VIEWED FROM CONNECTOR SIDE)

THIS DRAWING IS A CONTROLLED DOCUMENT.		REV	DATE	BY	DESCRIPTION
UNLESS OTHERWISE SPECIFIED:		01	08/01/05	AD	RECEP TABLE ASSEMBLY .355 [9.02]
FINISH	AS MANUFACTURED	02	08/01/05	AD	VERTICAL .025 [0.64] CL, GULL WING
PLATING	AS MANUFACTURED	03	08/01/05	AD	LEAKS, POCKET TAPE PACKAGED, MICRO
WELDING	AS MANUFACTURED	04	08/01/05	AD	SEE TABLE
OTHER	AS MANUFACTURED	05	08/01/05	AD	SEE TABLE
CUSTOMER DRAWING		DATE	SIZE	DRAWING NO.	REVISIONS
		A1	8.1	00779	5767145