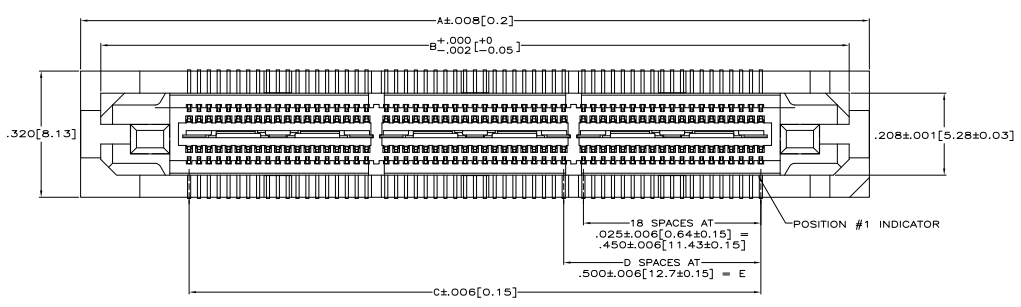
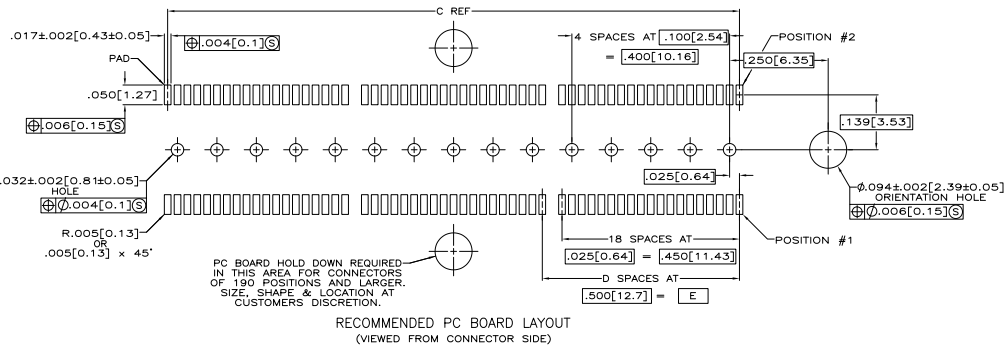
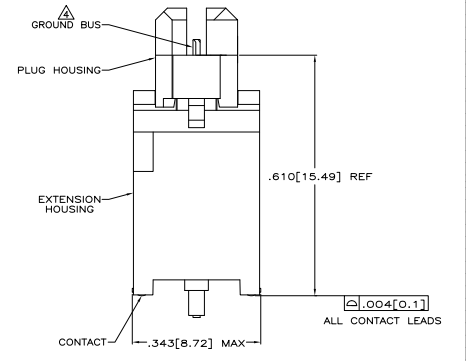
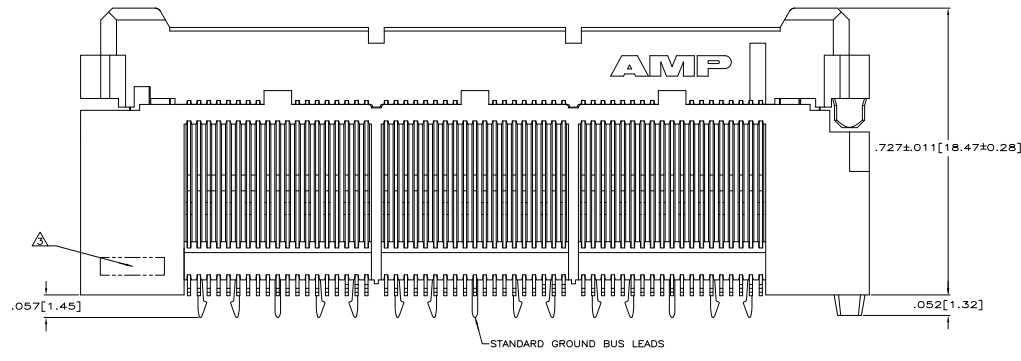


THIS DRAWING IS UNAPPROVED FOR PRODUCTION  
 © 1988 AMP ELECTRONICS CORPORATION ALL RIGHTS RESERVED

REV	DATE	DESCRIPTION	BY	CHKD
AD 47				
B		REVISED PER ECO-08-02945	25/AM08	DH DD



- ⚠ HOUSINGS: LIQUID CRYSTAL POLYMER, COLOR BLACK.  
CONTACTS: HIGH RELIABILITY COPPER ALLOY.  
GROUND BUSES: PHOSPHOR BRONZE ALLOY, UNS C51100.
- ⚠ CONTACTS & GROUND BUSES: NICKEL UNDERPLATE ALL OVER,  
MATING SURFACE PLATED TO MEET LEVEL 1 PERFORMANCE  
REQUIREMENTS OF TE PRODUCT SPECIFICATION 108-1422. SOLDER  
TAILS PLATED MATTE TIN.
- ⚠ DATE CODE MARKED IN AREA INDICATED ON SAME SIDE AS  
POSITION #1.
- ⚠ ONE GROUND BUS WITH 5 TAILS PER EACH MODULE.



3.000[76.2]	6	3.450[87.63]	3.898[99]	4.000[101.6]	266	5767042-7
2.500[63.5]	5	2.950[74.93]	3.398[86.31]	3.500[88.9]	228	5767042-6
2.000[50.8]	4	2.450[62.23]	2.898[73.61]	3.000[76.2]	190	5767042-5
1.500[38.1]	3	1.950[49.53]	2.398[60.91]	2.500[63.5]	152	5767042-4
1.000[25.4]	2	1.450[36.83]	1.898[48.21]	2.000[50.8]	114	5767042-3
.500[12.7]	1	.950[24.13]	1.398[35.51]	1.500[38.1]	76	5767042-2
.000[0]	0	.450[11.43]	.898[22.81]	1.000[25.4]	38	5767042-1
E	D	C	B	A	NO. OF POS	PART NUMBER

THIS DRAWING IS A CONTROLLED DOCUMENT.

DATE: 114-11004

SIZE: 8.1

REVISED PER ECO-08-02945

PLUG ASSEMBLY, 738[18.75] VERTICAL, .025[0.64] CENTER LINE, MICTOR

DATE: 114-11004

SIZE: 8.1

REVISED PER ECO-08-02945

PLUG ASSEMBLY, 738[18.75] VERTICAL, .025[0.64] CENTER LINE, MICTOR

DATE: 114-11004

SIZE: 8.1

REVISED PER ECO-08-02945

PLUG ASSEMBLY, 738[18.75] VERTICAL, .025[0.64] CENTER LINE, MICTOR