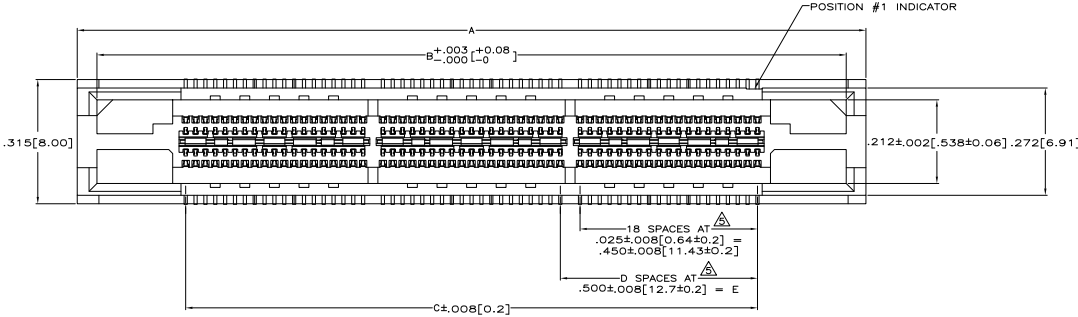
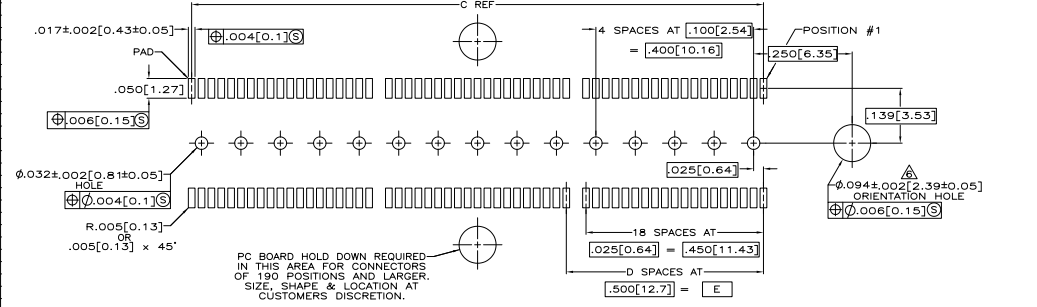
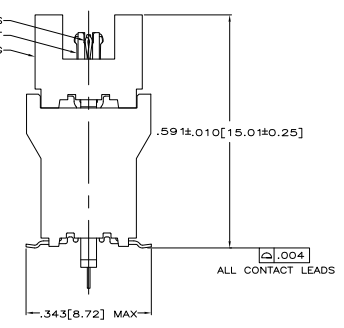
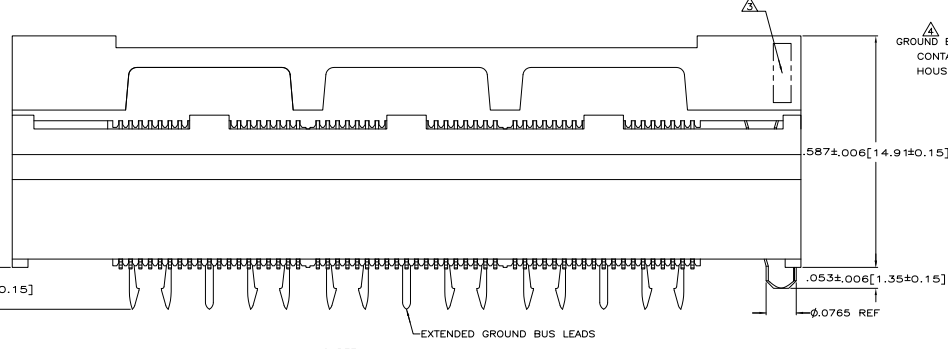


THIS DRAWING IS UNPUBLISHED
 © 2008 BY TYS ELECTRONICS CORPORATION. ALL RIGHTS RESERVED.

| REV | DATE | DESCRIPTION | BY | APP'D |
|-------|------|---------------------------|--------|-------|
| GP 00 | | | | |
| B | | REVISED PER ECO-08-009495 | JAMMOR | DH DD |



- △ HOUSING: LIQUID CRYSTAL POLYMER, COLOR BLACK.
- CONTACTS: HIGH RELIABILITY COPPER ALLOY.
- GROUND BUSES: PHOSPHOR BRONZE ALLOY, UNS C51100.
- △ CONTACTS & GROUND BUSES: NICKEL UNDERPLATE ALL OVER, MATING SURFACE PLATED TO MEET LEVEL 2 PERFORMANCE REQUIREMENTS OF TE PRODUCT SPECIFICATION 108-1422. SOLDER TAILS PLATED MATTE TIN.
- △ DATE CODE MARKED IN AREA INDICATED ON SIDE OPPOSITE POSITION #1.
- △ ONE GROUND BUS WITH 5 TAILS PER EACH MODULE.
- △ TOLERANCE NON-ACCUMULATIVE.
- △ FOR SLIP-FIT APPLICATIONS, ORIENTATION HOLE TO BE $\phi 0.079 \pm 0.01 [2.00 \pm 0.03]$.
- △ OBSOLETE



RECOMMENDED PC BOARD LAYOUT
 (VIEWED FROM CONNECTOR SIDE)

| | | | | | | |
|----------------|---|---------------|---------------|---------------|-------------|-------------|
| △ 3.000 [76.2] | 6 | 3.450 [87.63] | 3.900 [99.06] | 4.000 [101.6] | 286 | 5767154-7 |
| 2.500 [63.5] | 5 | 2.950 [74.93] | 3.400 [86.36] | 3.500 [88.9] | 228 | 5767154-6 |
| 2.000 [50.8] | 4 | 2.450 [62.23] | 2.900 [73.66] | 3.000 [76.2] | 190 | 5767154-5 |
| 1.500 [38.1] | 3 | 1.950 [49.53] | 2.400 [60.96] | 2.500 [63.5] | 152 | 5767154-4 |
| 1.000 [25.4] | 2 | 1.450 [36.83] | 1.900 [48.26] | 2.000 [50.8] | 114 | 5767154-3 |
| .500 [12.7] | 1 | .950 [24.13] | 1.400 [35.56] | 1.500 [38.1] | 76 | 5767154-2 |
| .000 [0] | 0 | .450 [11.43] | .900 [22.86] | 1.000 [25.4] | 38 | 5767154-1 |
| E | D | C | B | A | NO. OF POS. | PART NUMBER |

THIS DRAWING IS A CONTROLLED DOCUMENT.

INFORMATION: THIS DRAWING IS THE PROPERTY OF TYS ELECTRONICS CORPORATION. IT IS TO BE KEPT IN CONFIDENCE AND NOT TO BE REPRODUCED OR TRANSMITTED IN ANY FORM OR BY ANY MEANS, ELECTRONIC OR MECHANICAL, INCLUDING PHOTOCOPYING, RECORDING, OR BY ANY INFORMATION STORAGE AND RETRIEVAL SYSTEM.

REVISIONS: 108-1422, .355 [0.02] VERTICAL, .025 [0.64] CENTER LINE, MICTOR

DATE: 11-11-04

SIZE: 8.1

CUSTOMER DRAWING: A100779 (C=5767154)

MP 440 REV 01/2008