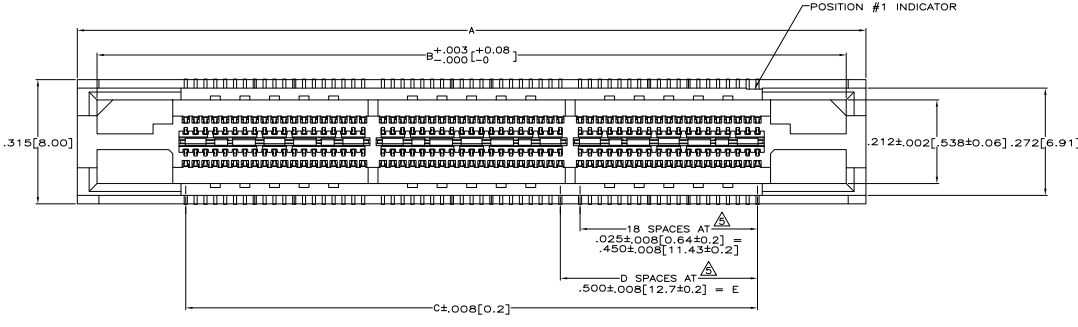
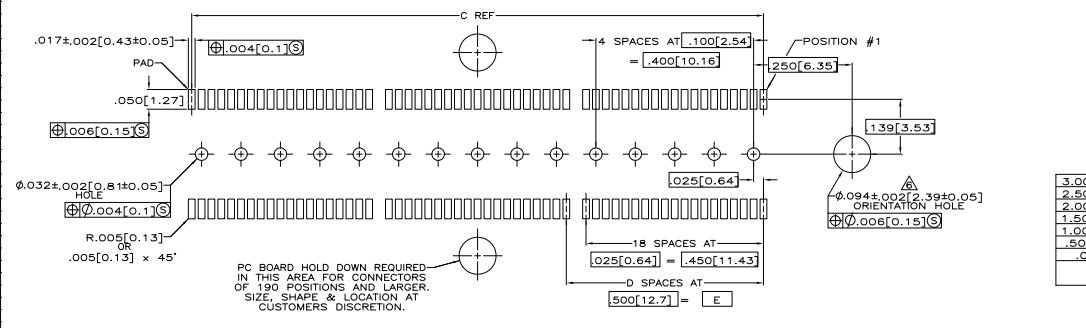
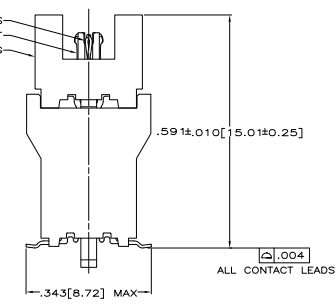
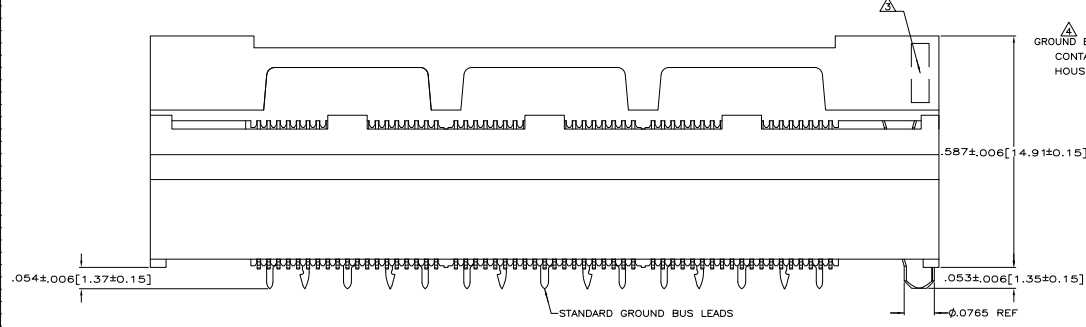


THIS DRAWING IS UNPUBLISHED
 © 2008 BY TTI ELECTRONICS CORPORATION. ALL INFORMATION HEREIN IS UNCLASSIFIED.

REV	DATE	DESCRIPTION	BY	CHK	APP
AD 47					
E		REVISED PER ECO-08-00946			



- △ HOUSING: LIQUID CRYSTAL POLYMER, COLOR BLACK.
- △ CONTACTS: HIGH RELIABILITY COPPER ALLOY.
- △ GROUND BUSES: PHOSPHOR BRONZE ALLOY, UNS C51100.
- △ CONTACTS & GROUND BUSES: NICKEL UNDERPLATE ALL OVER, MATING SURFACE PLATED TO MEET LEVEL 2 PERFORMANCE REQUIREMENTS OF THE PRODUCT SPECIFICATION 108-1422, SOLDER TAILS PLATED TIN-LEAD.
- △ DATE CODE MARKED IN AREA INDICATED ON SIDE OPPOSITE POSITION #1.
- △ ONE GROUND BUS WITH 5 TAILS PER EACH MODULE.
- △ TOLERANCE NON-ACCUMULATIVE.
- △ FOR SLIP-FIT APPLICATIONS, ORIENTATION HOLE TO BE $\phi 0.79 \pm .001 [2.00 \pm 0.03]$.



RECOMMENDED PC BOARD LAYOUT
 (VIEWED FROM CONNECTOR SIDE)

3.000 [76.2]	6	3.450 [87.63]	3.900 [99.06]	4.000 [101.6]	286	767094-7
2.500 [63.5]	5	2.950 [74.93]	3.400 [86.36]	3.500 [88.9]	228	767094-6
2.000 [50.8]	4	2.450 [62.23]	2.900 [73.66]	3.000 [76.2]	190	767094-5
1.500 [38.1]	3	1.950 [49.53]	2.400 [60.96]	2.500 [63.5]	152	767094-4
1.000 [25.4]	2	1.450 [36.83]	1.900 [48.26]	2.000 [50.8]	114	767094-3
.500 [12.7]	1	.950 [24.13]	1.400 [35.56]	1.500 [38.1]	76	767094-2
.000 [0]	0	.450 [11.43]	.900 [22.86]	1.000 [25.4]	38	767094-1
E	D	C	B	A	NO. OF POS.	PART NUMBER

THIS DRAWING IS A CONTROLLED DOCUMENT. DATE: 11-11-04

DESIGNED BY: [Signature] DATE: 11-11-04

ENGINEER: [Signature] DATE: 11-11-04

DATE: 11-11-04

REVISIONS: 108-1422

REVISED PER ECO-08-00946

DATE CODE: 114-11004

SIZE: 8.1

NO. OF POS: 286

PART NUMBER: 767094-7

RECEPTACLE ASSEMBLY, .35 [9.02] VERTICAL, .025 [0.64] CENTER LINE, MICTOR

DATE: 11-11-04

BY: [Signature]

CHK: [Signature]

APP: [Signature]

CUSTOMER DRAWING