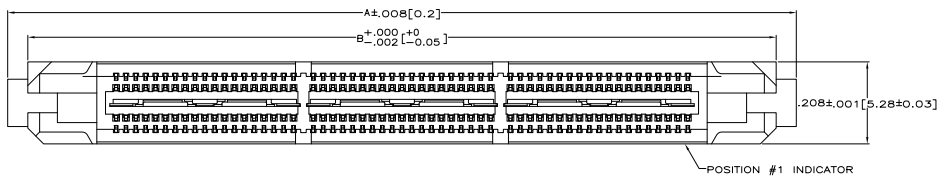
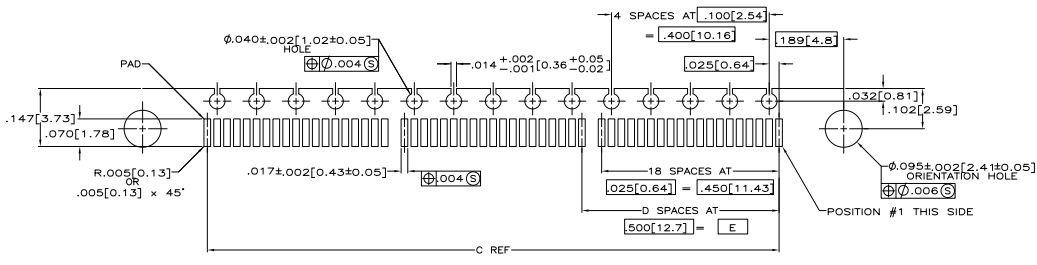
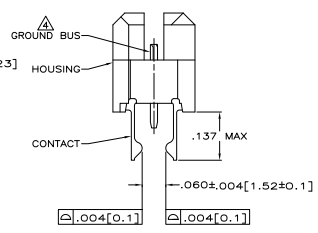
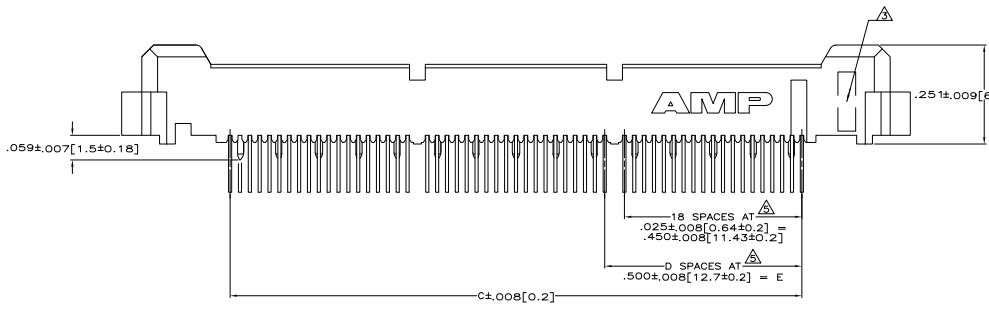


THIS DRAWING IS UNPUBLISHED
 UNLESS INDICATED OTHERWISE
 © 1978 AMP INC. ALL RIGHTS RESERVED

REV	DATE	DESCRIPTION	BY	CHK
AD 47		REVISED FOR ECO-08-02945		



- △ HOUSING: LIQUID CRYSTAL POLYMER, COLOR BLACK.
CONTACTS: HIGH RELIABILITY COPPER ALLOY.
GROUND BUSES: PHOSPHOR BRONZE ALLOY, UNS C51100.
- △ CONTACTS & GROUND BUSES: NICKEL UNDERPLATE ALL OVER.
MATING SURFACE PLATED TO MEET LEVEL 2 PERFORMANCE
REQUIREMENTS OF THE PRODUCT SPECIFICATION 106-1422.
SOLDER TAILS PLATED TIN-LEAD.
- △ DATE CODE MARKED IN AREA INDICATED ON SAME SIDE AS
POSITION #1.
- △ ONE GROUND BUS WITH 5 TAILS PER EACH MODULE.
- △ TOLERANCE NON-ACCUMULATIVE.



REV	DATE	DESCRIPTION	BY	CHK
1		PLUG ASSEMBLY, RIGHT ANGLE, .025 [0.64] CENTER LINE, .062 [1.57] POS. MICTOR		

REV	DATE	DESCRIPTION	BY	CHK
1		PLUG ASSEMBLY, RIGHT ANGLE, .025 [0.64] CENTER LINE, .062 [1.57] POS. MICTOR		

REV	DATE	DESCRIPTION	BY	CHK
1		PLUG ASSEMBLY, RIGHT ANGLE, .025 [0.64] CENTER LINE, .062 [1.57] POS. MICTOR		

REV	DATE	DESCRIPTION	BY	CHK
1		PLUG ASSEMBLY, RIGHT ANGLE, .025 [0.64] CENTER LINE, .062 [1.57] POS. MICTOR		

REV	DATE	DESCRIPTION	BY	CHK
1		PLUG ASSEMBLY, RIGHT ANGLE, .025 [0.64] CENTER LINE, .062 [1.57] POS. MICTOR		

REV	DATE	DESCRIPTION	BY	CHK
1		PLUG ASSEMBLY, RIGHT ANGLE, .025 [0.64] CENTER LINE, .062 [1.57] POS. MICTOR		

AMP 480 REV 2/1978