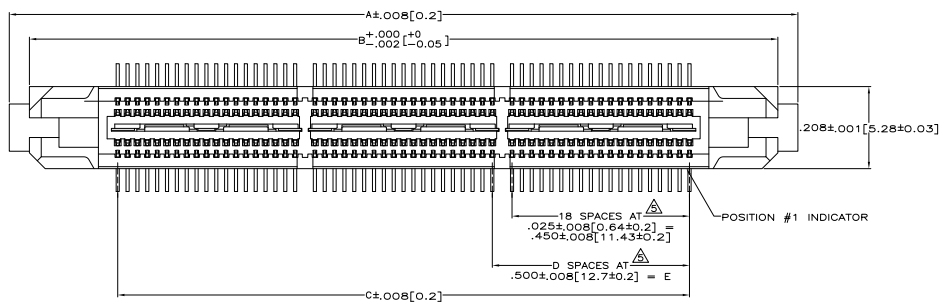
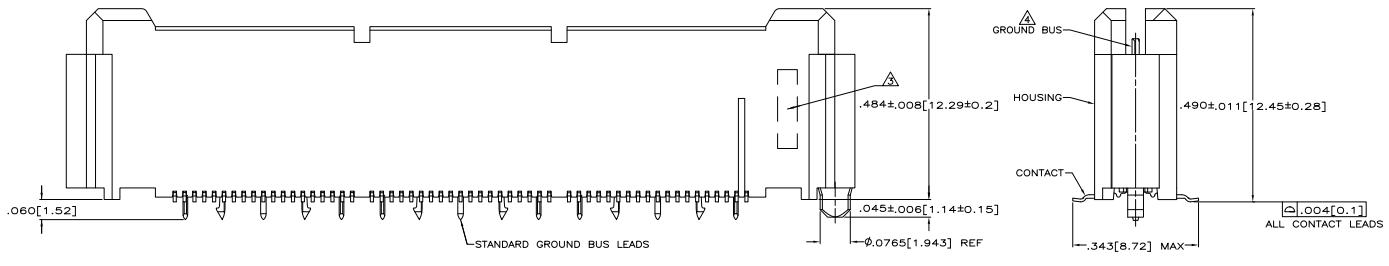


THIS DRAWING IS UNAPPROVED UNLESS INDICATED FOR VERIFICATION
 © 2008 BY TDS ELECTRONICS CORPORATION ALL INFORMATION IS UNCLASSIFIED

REV	DATE	DESCRIPTION	BY	APP
AD	00			
D1		REVISED PER ECO-08-022870		22/01/10 HMR DD



- △ HOUSING: LIQUID CRYSTAL POLYMER, COLOR BLACK.
- △ CONTACTS: HIGH RELIABILITY COPPER ALLOY.
- △ GROUND BUSES: PHOSPHOR BRONZE ALLOY, UNS C51100.
- △ CONTACTS & GROUND BUSES: NICKEL UNDERPLATE ALL OVER, MATING SURFACE PLATED TO MEET LEVEL 1 PERFORMANCE REQUIREMENTS OF TE PRODUCT SPECIFICATION 108-1422. SOLDER TAILS PLATED TIN-LEAD.
- △ DATE CODE MARKED IN AREA INDICATED ON SIDE OPPOSITE POSITION #1.
- △ ONE GROUND BUS WITH 5 TAILS PER EACH MODULE.
- △ TOLERANCE NON-ACCUMULATIVE.
- △ FOR STANDARD APPLICATIONS, ORIENTATION HOLE TO BE $\phi .094 \pm .002 [2.39 \pm 0.05]$.
- △ FOR SLIP-FIT APPLICATIONS, ORIENTATION HOLE TO BE $\phi .079 \pm .001 [2.00 \pm 0.03]$.
- △ CONNECTORS PACKAGED ON 13 INCH DIA REELS PER EIA 481.
- △ PRELIMINARY - NOT RELEASED FOR PRODUCTION.



SEE SHEET 2 FOR RECOMMENDED PC BOARD LAYOUT AND PACKAGING DETAIL

NO	4.724[120]	3.000[76.2]	6	3.450[87.63]	3.898[99.01]	4.000[101.6]	266	1-767149-4
NO	4.094[104]	2.500[63.5]	5	2.950[74.93]	3.398[86.31]	3.500[88.9]	228	1-767149-3
NO	3.465[88]	2.000[50.8]	4	2.450[62.23]	2.898[73.61]	3.000[76.2]	190	1-767149-2
NO	3.465[88]	1.500[38.1]	3	1.950[49.53]	2.398[60.91]	2.500[63.5]	152	1-767149-1
NO	2.835[72]	1.000[25.4]	2	1.450[36.83]	1.898[48.21]	2.000[50.8]	114	1-767149-0
NO	2.205[56]	.500[12.7]	1	.950[24.13]	1.398[35.51]	1.500[38.1]	76	767149-9
NO	1.732[44]	.000[0]	0	.450[11.43]	.898[22.81]	1.000[25.4]	38	767149-8
YES	4.724[120]	3.000[76.2]	6	3.450[87.63]	3.898[99.01]	4.000[101.6]	266	767149-7
YES	4.094[104]	2.500[63.5]	5	2.950[74.93]	3.398[86.31]	3.500[88.9]	228	767149-6
YES	3.465[88]	2.000[50.8]	4	2.450[62.23]	2.898[73.61]	3.000[76.2]	190	767149-5
YES	3.465[88]	1.500[38.1]	3	1.950[49.53]	2.398[60.91]	2.500[63.5]	152	767149-4
YES	2.835[72]	1.000[25.4]	2	1.450[36.83]	1.898[48.21]	2.000[50.8]	114	767149-3
YES	2.205[56]	.500[12.7]	1	.950[24.13]	1.398[35.51]	1.500[38.1]	76	767149-2
YES	1.732[44]	.000[0]	0	.450[11.43]	.898[22.81]	1.000[25.4]	38	767149-1
VACUUM COVER INCLUDED	F	E	D	C	B	A	NO OF POS	PART NUMBER

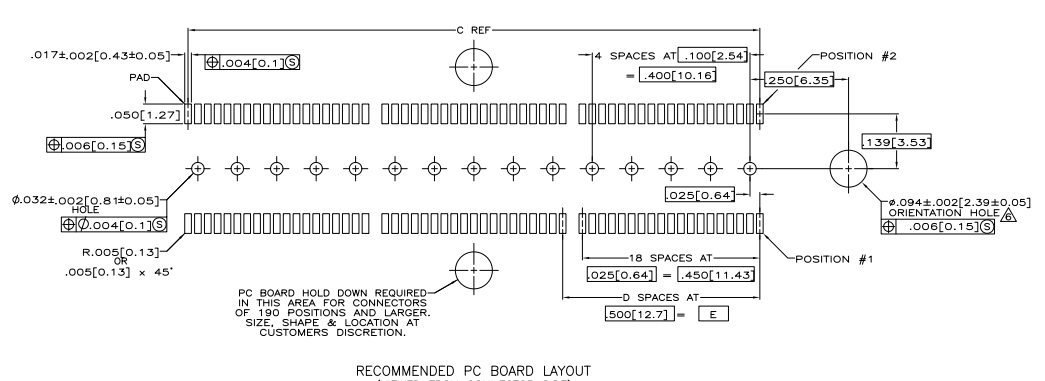
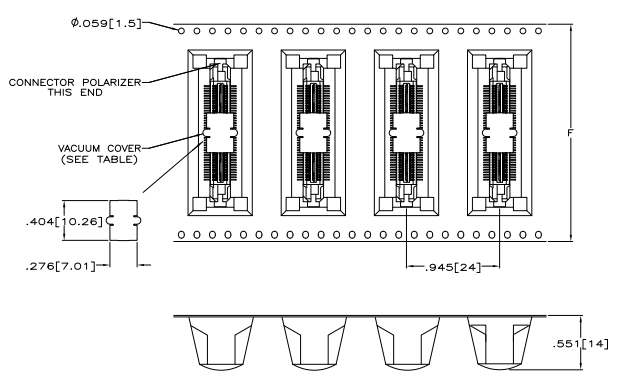
THIS DRAWING IS A CONTROLLED DOCUMENT. REFERENCE TO THIS DRAWING SHOULD BE MADE TO THE ORIGINAL DRAWING.

REVISIONS	DATE	DESCRIPTION
1	11-11-04	108-1422
2	11-11-04	114-11004

DIMENSIONS: MILLIMETERS
 UNLESS OTHERWISE SPECIFIED
 TOLERANCES: FRACTIONS DECIMALS
 .005 .01 .02 .03 .04 .05 .06 .07 .08 .09 .10 .15 .20 .25 .30 .40 .50 .60 .70 .80 .90 1.00 1.50 2.00 3.00 4.00 5.00 6.00 8.00 10.00
 SURFACE FINISH: RA .125
 MATERIAL: PHOSPHOR BRONZE ALLOY UNS C51100
 CONTACTS: HIGH RELIABILITY COPPER ALLOY
 HOUSING: LIQUID CRYSTAL POLYMER, COLOR BLACK
 CONTACTS & GROUND BUSES: NICKEL UNDERPLATE ALL OVER, MATING SURFACE PLATED TO MEET LEVEL 1 PERFORMANCE REQUIREMENTS OF TE PRODUCT SPECIFICATION 108-1422. SOLDER TAILS PLATED TIN-LEAD.
 DATE CODE MARKED IN AREA INDICATED ON SIDE OPPOSITE POSITION #1.
 ONE GROUND BUS WITH 5 TAILS PER EACH MODULE.
 TOLERANCE NON-ACCUMULATIVE.
 FOR STANDARD APPLICATIONS, ORIENTATION HOLE TO BE $\phi .094 \pm .002 [2.39 \pm 0.05]$.
 FOR SLIP-FIT APPLICATIONS, ORIENTATION HOLE TO BE $\phi .079 \pm .001 [2.00 \pm 0.03]$.
 CONNECTORS PACKAGED ON 13 INCH DIA REELS PER EIA 481.
 PRELIMINARY - NOT RELEASED FOR PRODUCTION.

THIS DRAWING IS A CONTROLLED DOCUMENT. REFERENCE TO THIS DRAWING SHOULD BE MADE TO THE ORIGINAL DRAWING.
 CUSTOMER DRAWING
 DATE: 8.1
 SHEET: 1 OF 2
 D1

REV	DATE	DESCRIPTION	BY	APP'D
AD 47				
-		SEE SHEET 1	-	-



THIS DRAWING IS A CONTROLLED DOCUMENT.		BY CHANGE		REVISION		DATE		BY		APP'D	
DRAWINGS		DESIGNED		DRAWN		CHECKED		DATE		BY	
REVISIONS		DATE		BY		APP'D		DATE		BY	
DRAWING NO.		DATE		BY		APP'D		DATE		BY	
DRAWING NO.		DATE		BY		APP'D		DATE		BY	
DRAWING NO.		DATE		BY		APP'D		DATE		BY	

Customer Drawing	PLUG ASSEMBLY, 495 [12.57] VERTICAL, .025 [0.64] CL, GULL WING LEADS, SOCKET TYPE PACKAGED, MICROT.	SEE DATE 05/11/09 DRAWING NO. A1 00779 Q=767149	RESTRICTED TO
------------------	---	---	---------------