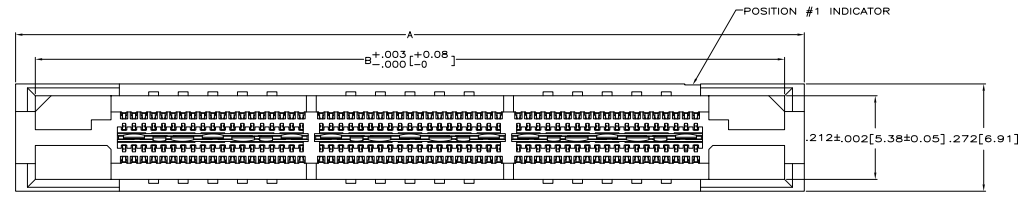
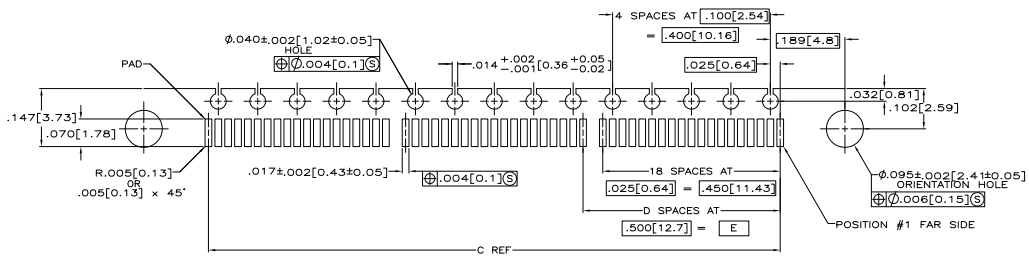
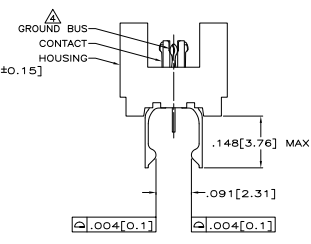
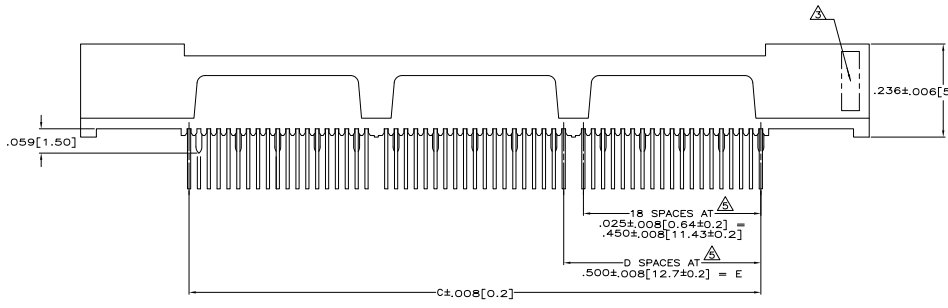


THIS DRAWING IS UNPUBLISHED
 RECEIVED FOR INFORMATION
 © 1988 TTI ELECTRONICS CORPORATION ALL RIGHTS RESERVED

REV	DATE	DESCRIPTION	BY	CHK	APP
AD	00	REVISED PER ECO-08-009495	25A/MSH	DH	DD



- △ HOUSING: LIQUID CRYSTAL POLYMER, COLOR BLACK.
- CONTACTS: HIGH RELIABILITY COPPER ALLOY.
- GROUND BUSSES: PHOSPHOR BRONZE ALLOY, UNS C51100.
- CONTACTS & GROUND BUSES: NICKEL UNDERPLATE ALL OVER, MATING SURFACE PLATED TO MEET LEVEL 2 PERFORMANCE REQUIREMENTS OF TE PRODUCT SPECIFICATION 108-1422, SOLDER TAILS PLATED MATTE TIN.
- △ DATE CODE MARKED IN AREA INDICATED ON SIDE OPPOSITE POSITION #1.
- △ ONE GROUND BUS WITH 5 TAILS PER EACH MODULE.
- △ TOLERANCE NON-ACCUMULATIVE.
- △ OBSOLETE



RECOMMENDED PC BOARD LAYOUT
 (MIRROR IMAGE ON OPPOSITE SIDE)

3.000 [76.2]	6	3.450 [87.63]	3.900 [99.06]	4.000 [101.6]	266	5767089-7
2.500 [63.5]	5	2.950 [74.93]	3.400 [86.36]	3.500 [88.9]	228	5767089-6
2.000 [50.8]	4	2.450 [62.23]	2.900 [73.66]	3.000 [76.2]	190	5767089-5
1.500 [38.1]	3	1.950 [49.53]	2.400 [60.96]	2.500 [63.5]	152	5767089-4
1.000 [25.4]	2	1.450 [36.83]	1.900 [48.26]	2.000 [50.8]	114	5767089-3
.500 [12.7]	1	.950 [24.13]	1.400 [35.56]	1.500 [38.1]	76	5767089-2
.000 [0]	0	.450 [11.43]	.900 [22.86]	1.000 [25.4]	38	5767089-1
E	D	C	B	A	NO OF POS	PART NUMBER

THIS DRAWING IS A CONTROLLED DOCUMENT. **TTI ELECTRONICS** 17100-3008

REVISIONS: 108-1422

RECEPTACLE ASSEMBLY, RIGHT ANGLE, $.025 [0.64]$ CENTER LINE, $.091 [2.30]$ POS. VECTOR

DATE: 114-13088

CUSTOMER DRAWING: A100779 (C=5767089)

DATE: 8.1