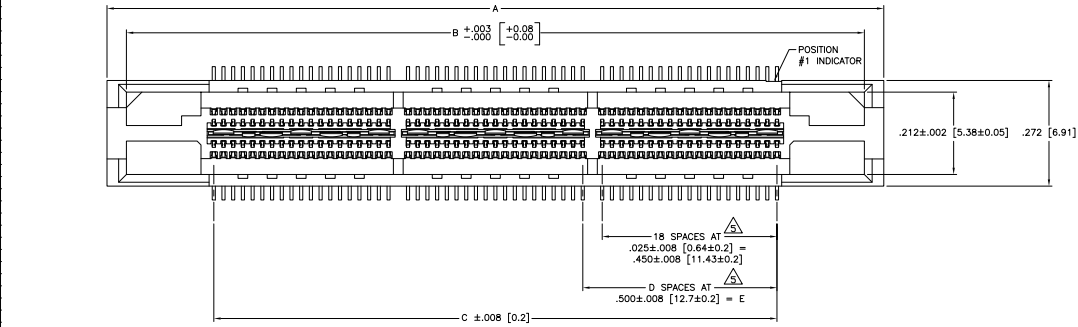
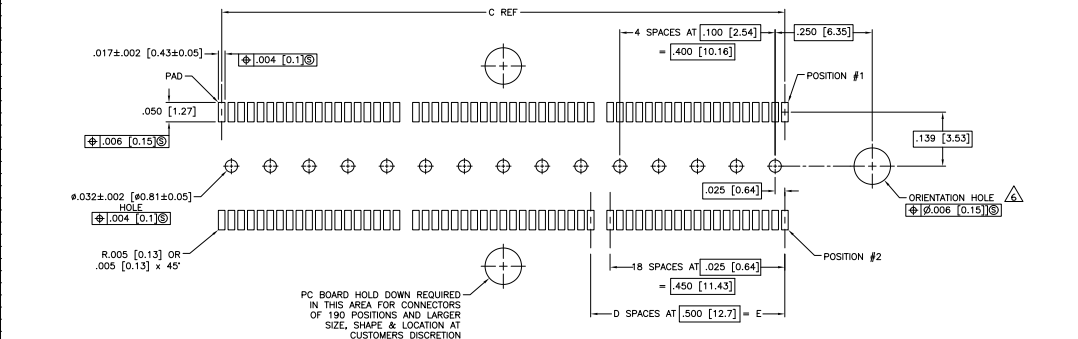
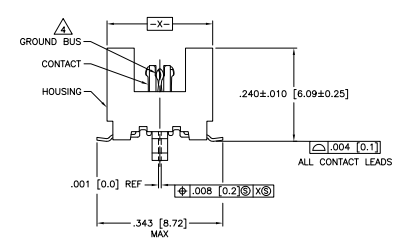
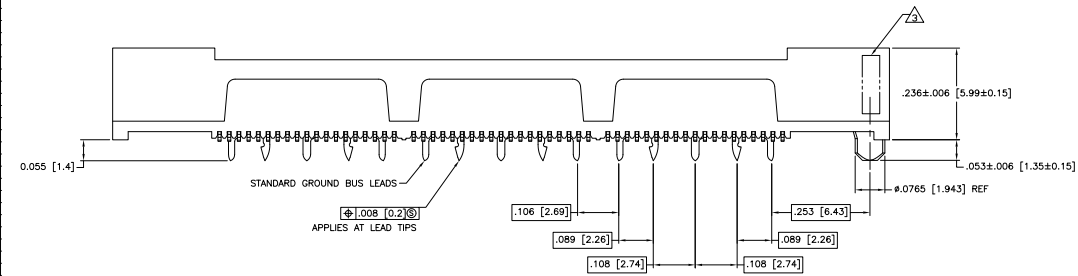


THIS DRAWING IS UNAPPROVED FOR PRODUCTION
 © Copyright 1998 by Electronic Components, All Rights Reserved

REV	DATE	DESCRIPTION	BY	CHK	APP
AD	00				
A1		REVISED PER ECO-11-002279			



- △ HOUSING: LIQUID CRYSTAL POLYMER, BLACK.
CONTACTS: HIGH RELIABILITY COPPER ALLOY.
GROUND BUSES: PHOSPHOR BRONZE ALLOY, UNS C51100.
- △ CONTACTS & GROUND BUSES: NICKEL UNDERPLATE ALL OVER.
MATING SURFACE PLATED TO MEET LEVEL 2 PERFORMANCE
REQUIREMENTS OF THE PRODUCT SPECIFICATION 108-1422.
SOLDER TAILS PLATED MATTE TIN.
- △ DATE CODE MARKED IN AREA INDICATED ON SIDE OPPOSITE
POSITION #1.
- △ ONE GROUND BUS WITH 5 TAILS PER EACH MODULE.
- △ TOLERANCE NON-ACCUMULATIVE.
- △ FOR STANDARD APPLICATIONS, ORIENTATION HOLE TO BE
Ø.094 ±.002 [2.39 ±0.05].
FOR SLIP-FIT APPLICATIONS, ORIENTATION HOLE TO BE
Ø.079 ±.001 [2.00 ±0.03].



3.000 [76.2]	6	3.450 [87.63]	3.900 [99.06]	4.000 [101.6]	266	5767181-7
2.500 [63.5]	5	2.950 [74.93]	3.400 [86.36]	3.500 [88.9]	228	5767181-6
2.000 [50.8]	4	2.450 [62.23]	2.900 [73.66]	3.000 [76.2]	190	5767181-5
1.500 [38.1]	3	1.950 [49.53]	2.400 [60.96]	2.500 [63.5]	152	5767181-4
1.000 [25.4]	2	1.450 [36.83]	1.900 [48.26]	2.000 [50.8]	114	5767181-3
.500 [12.7]	1	.950 [24.13]	1.400 [35.56]	1.500 [38.1]	76	5767181-2
.000 [0]	0	.450 [11.43]	.900 [22.86]	1.00 [25.4]	38	5767181-1

PC BOARD HOLD DOWN REQUIRED
 IN THIS AREA FOR CONNECTORS
 OF 100 POSITIONS AND LARGER
 SIZE, SHAPE & LOCATION AT
 CUSTOMERS DISCRETION

RECOMMENDED PC BOARD LAYOUT
 (VIEWED FROM CONNECTOR SIDE)

THIS DRAWING IS A CONTROLLED DOCUMENT. IN ACCORDANCE WITH THE POLICY OF THE COMPANY.

DESIGNED BY	DATE	REVISED BY	DATE
DR	108-1422	DR	114-11004

RECEIPTABLE ASSEMBLY:
 VERTICAL .025 (0.64) CL
 GULL WING LEADS, MOTOR

NO. OF POS. NUMBER

DATE 10/11/98