

4

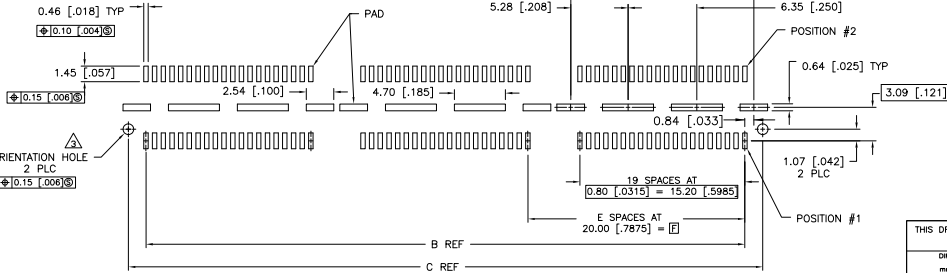
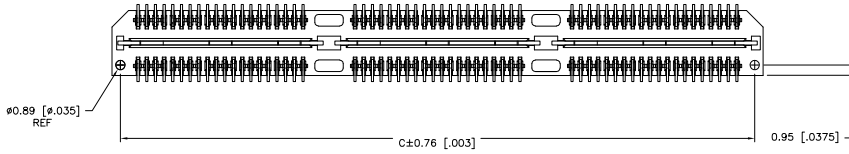
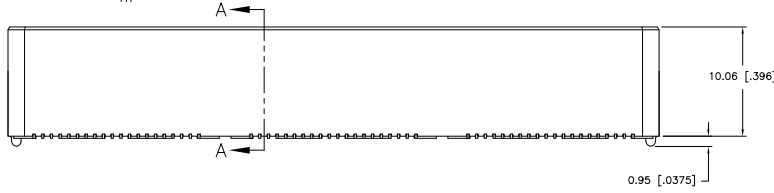
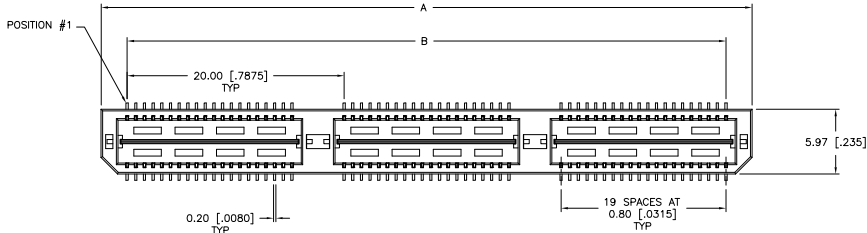
3

2

1

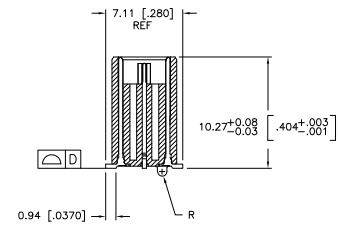
THIS DRAWING IS UNPUBLISHED. RELEASED FOR PUBLICATION. BY TYCO ELECTRONICS CORPORATION. ALL RIGHTS RESERVED.

LOC	DIST	REVISIONS					
		P	LTR	DESCRIPTION	DATE	BY	APPD
AD	00	H		REVISED PER EC 0512-0273-05	19SEP05	JDP	DD

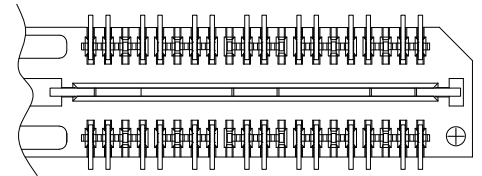


RECOMMENDED PC BOARD LAYOUT (VIEWED FROM CONNECTOR SIDE)

- 1 HOUSING: LCP, BLACK. CONTACT & GROUND PLANE: PHOS BRONZE.
- 2 CONTACT PLATING: SELECT 0.25 MICROMETERS (.000010 IN.) MIN. GOLD.
- 3 FOR STANDARD APPLICATIONS, ORIENTATION HOLE TO BE Ø1.02 [Ø.0400].



SECTION A-A



DIFFERENTIAL PAIR LOADING (BOTTOM VIEW) SCALE 2:1

THIS DRAWING IS A CONTROLLED DOCUMENT.		DWG: B. CARBO 30MNO3 CHK: 30MNO3 D. DIXON 30MNO3 APPD: 30MNO3 NAME:	<b>Tyco Electronics</b> Tyco Electronics Corporation Harrisburg, PA 17105-3608
DIMENSIONS: mm [INCHES]	TO MANUFACTURE: 0 PLC ± .1 1 PLC ± 0.3(0.1) 2 PLC ± 0.15(0.05) 3 PLC ± 0.08(0.025) 4 PLC ± .1 ANGLE: ± .1 FINISH:	PRODUCT SPEC: APPLICATION SPEC: WEIGHT:	HEADER ASSEMBLY, 11.0MM [.433] VERTICAL, 0.80MM CL, MICTOR SB
MATERIAL:	1	2	SIZE: A2 CAGE CODE: 00779 DRAWING NO: 1658015 RESTRICTED TO:
CUSTOMER DRAWING		SCALE: 3:1	SHEET: 1 of 2 REV: H

AMP 1471-9 REV 31MAR2000

1658015

A

4

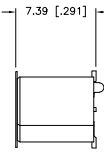
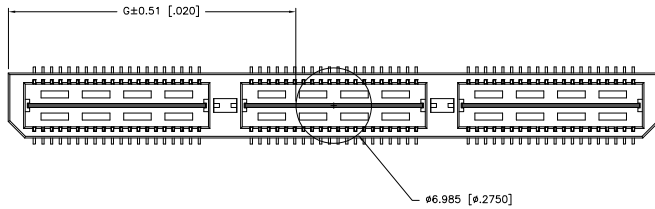
3

2

1

THIS DRAWING IS UNPUBLISHED. RELEASED FOR PUBLICATION  
 © COPYRIGHT BY TYCO ELECTRONICS CORPORATION. ALL RIGHTS RESERVED.

LOC	DIST	REVISIONS					
AD	00	P	LTR	DESCRIPTION	DATE	BY	APPD
				SEE SHEET 1			



26.52(1.044)	40.00(1.575)	2	0.102(0.040)	58.50(2.303)	55.20(2.173)	60.00(2.362)	YES	POCKET TAPE	YES	84	7-1658015-3
16.51(0.650)	20.00(0.7874)	1	0.102(0.040)	38.48(1.515)	35.20(1.386)	40.00(1.575)	YES	POCKET TAPE	YES	56	7-1658015-2
6.50(0.256)	0(0.000)	0	0.102(0.040)	18.49(0.728)	15.20(0.598)	20.00(0.787)	YES	POCKET TAPE	YES	28	7-1658015-1
26.52(1.044)	40.00(1.575)	2	0.102(0.040)	58.50(2.303)	55.20(2.173)	60.00(2.362)	YES	POCKET TAPE	NO	120	6-1658015-3
16.51(0.650)	20.00(0.7874)	1	0.102(0.040)	38.48(1.515)	35.20(1.386)	40.00(1.575)	YES	POCKET TAPE	NO	80	6-1658015-2
6.50(0.256)	0(0.000)	0	0.102(0.040)	18.49(0.728)	15.20(0.598)	20.00(0.787)	YES	POCKET TAPE	NO	40	6-1658015-1
-	40.00(1.575)	2	0.102(0.040)	58.50(2.303)	55.20(2.173)	60.00(2.362)	NO	POCKET TAPE	YES	84	5-1658015-3
-	20.00(0.7874)	1	0.102(0.040)	38.48(1.515)	35.20(1.386)	40.00(1.575)	NO	POCKET TAPE	YES	56	5-1658015-2
-	0(0.000)	0	0.102(0.040)	18.49(0.728)	15.20(0.598)	20.00(0.787)	NO	POCKET TAPE	YES	28	5-1658015-1
-	40.00(1.575)	2	0.102(0.040)	58.50(2.303)	55.20(2.173)	60.00(2.362)	NO	POCKET TAPE	NO	120	4-1658015-3
-	20.00(0.7874)	1	0.102(0.040)	38.48(1.515)	35.20(1.386)	40.00(1.575)	NO	POCKET TAPE	NO	80	4-1658015-2
-	0(0.000)	0	0.102(0.040)	18.49(0.728)	15.20(0.598)	20.00(0.787)	NO	POCKET TAPE	NO	40	4-1658015-1
46.51(1.831)	80.00(3.150)	4	0.152(0.060)	98.50(3.748)	95.20(3.748)	100.00(3.937)	YES	TRAY	YES	140	3-1658015-5
36.53(1.438)	60.00(2.362)	3	0.152(0.060)	78.49(3.090)	75.20(2.961)	80.00(3.150)	YES	TRAY	YES	112	3-1658015-4
26.52(1.044)	40.00(1.575)	2	0.102(0.040)	58.50(2.303)	55.20(2.173)	60.00(2.362)	YES	TRAY	YES	84	3-1658015-3
16.51(0.650)	20.00(0.7874)	1	0.102(0.040)	38.48(1.515)	35.20(1.386)	40.00(1.575)	YES	TRAY	YES	56	3-1658015-2
6.50(0.256)	0(0.000)	0	0.102(0.040)	18.49(0.728)	15.20(0.598)	20.00(0.787)	YES	TRAY	YES	28	3-1658015-1
46.51(1.831)	80.00(3.150)	4	0.152(0.060)	98.50(3.748)	95.20(3.748)	100.00(3.937)	YES	TRAY	NO	200	2-1658015-5
36.53(1.438)	60.00(2.362)	3	0.152(0.060)	78.49(3.090)	75.20(2.961)	80.00(3.150)	YES	TRAY	NO	160	2-1658015-4
26.52(1.044)	40.00(1.575)	2	0.102(0.040)	58.50(2.303)	55.20(2.173)	60.00(2.362)	YES	TRAY	NO	120	2-1658015-3
16.51(0.650)	20.00(0.7874)	1	0.102(0.040)	38.48(1.515)	35.20(1.386)	40.00(1.575)	YES	TRAY	NO	80	2-1658015-2
6.50(0.256)	0(0.000)	0	0.102(0.040)	18.49(0.728)	15.20(0.598)	20.00(0.787)	YES	TRAY	NO	40	2-1658015-1
-	80.00(3.150)	4	0.152(0.060)	98.50(3.748)	95.20(3.748)	100.00(3.937)	NO	TRAY	YES	140	1-1658015-5
-	60.00(2.362)	3	0.152(0.060)	78.49(3.090)	75.20(2.961)	80.00(3.150)	NO	TRAY	YES	112	1-1658015-4
-	40.00(1.575)	2	0.102(0.040)	58.50(2.303)	55.20(2.173)	60.00(2.362)	NO	TRAY	YES	84	1-1658015-3
-	20.00(0.7874)	1	0.102(0.040)	38.48(1.515)	35.20(1.386)	40.00(1.575)	NO	TRAY	YES	56	1-1658015-2
-	0(0.000)	0	0.102(0.040)	18.49(0.728)	15.20(0.598)	20.00(0.787)	NO	TRAY	YES	28	1-1658015-1
-	80.00(3.150)	4	0.152(0.060)	98.50(3.748)	95.20(3.748)	100.00(3.937)	NO	TRAY	NO	200	1658015-5
-	60.00(2.362)	3	0.152(0.060)	78.49(3.090)	75.20(2.961)	80.00(3.150)	NO	TRAY	NO	160	1658015-4
-	40.00(1.575)	2	0.102(0.040)	58.50(2.303)	55.20(2.173)	60.00(2.362)	NO	TRAY	NO	120	1658015-3
-	20.00(0.7874)	1	0.102(0.040)	38.48(1.515)	35.20(1.386)	40.00(1.575)	NO	TRAY	NO	80	1658015-2
-	0(0.000)	0	0.102(0.040)	18.49(0.728)	15.20(0.598)	20.00(0.787)	NO	TRAY	NO	40	1658015-1

G	F	E	D	C	B	A	POLYIMIDE FILM PAD ▲		PACKAGING TYPE	DIFF. PAIR	NO OF POS	PART NUMBER	
THIS DRAWING IS A CONTROLLED DOCUMENT.							REV	30MAY03	Tyco Electronics Corporation				
DIMENSIONS: mm [INCHES]							ENR	30MAY03	Harrisburg, PA 17105-3608				
MATERIAL: SEE SHEET 1							CHK	30MAY03	Tyco Electronics				
FINISH: SEE SHEET 1							APPD	30MAY03	NAME				
D. DIXON							PRODUCT SPEC	HEADER ASSEMBLY, 11.0MM [.433] VERTICAL, 0.80MM CL, MICTOR SB					
APPLICATION SPEC:							SIZE	CASE CODE		DRAWING NO.		RESTRICTED TO	
WEIGHT: --							A2	00779		1658015		--	
CUSTOMER DRAWING							SCALE	3:1		SHEET		2 of 2	REV H

AMP 1471-9 REV 31MAR2000

1658015

A

H