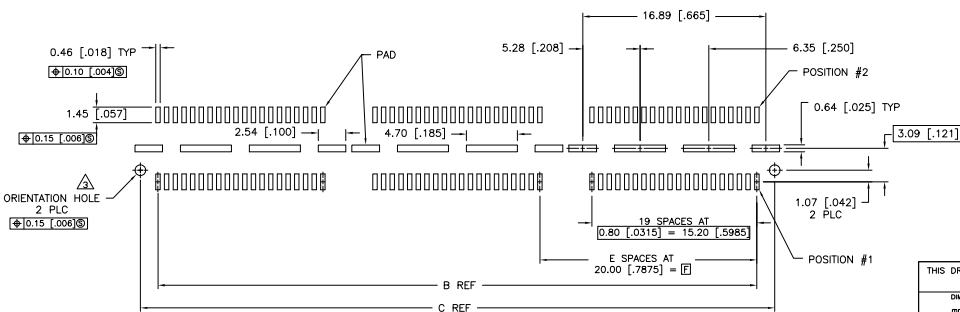
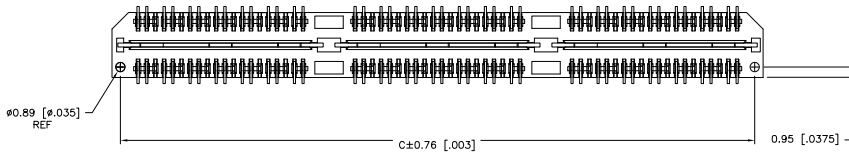
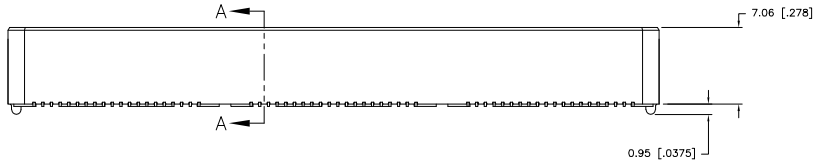
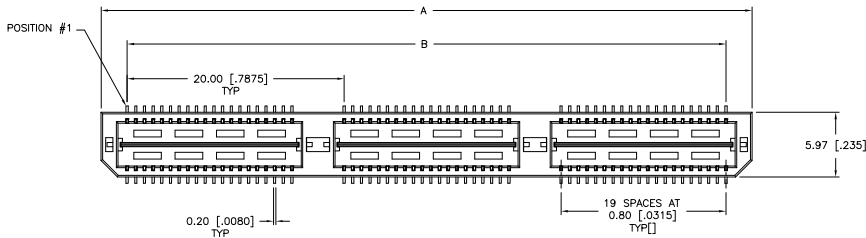


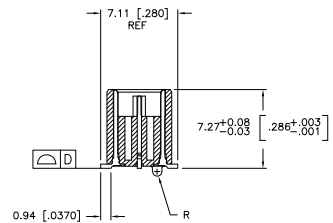
THIS DRAWING IS UNPUBLISHED. RELEASED FOR PUBLICATION. BY TYCO ELECTRONICS CORPORATION. ALL RIGHTS RESERVED.

LOC	DIST	REVISIONS				
		REV	DESCRIPTION	DATE	BY	APP'D
AD	00	F	LTR			
		H	REVISED PER EC 0512-0273-05	19SEP05	JDP	DD

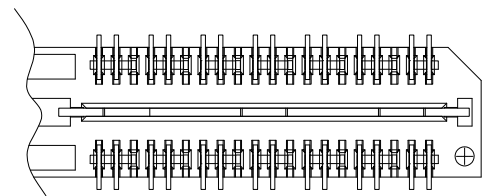


RECOMMENDED PC BOARD LAYOUT  
(VIEWED FROM CONNECTOR SIDE)

- ① HOUSING: LCP, BLACK.  
CONTACT & GROUND PLANE: PHOS BRONZE.
- ② CONTACT PLATING: SELECT 0.25 MICROMETERS (.000010 IN.) MIN. GOLD.
- ③ FOR STANDARD APPLICATIONS, ORIENTATION HOLE TO BE  $\varnothing 1.02$  [0.0400].



SECTION A-A



DIFFERENTIAL PAIR LOADING  
(BOTTOM VIEW)  
SCALE 2:1

THIS DRAWING IS A CONTROLLED DOCUMENT.		REV	B. CARBO	30JAN03	Tyco Electronics Corporation Harrisburg, PA 17105-3608
DIMENSIONS:		CHK	D. DIXON	30JAN03	
mm [INCHES]		APP'D	D. DIXON	30JAN03	NAME
TOLERANCES UNLESS OTHERWISE SPECIFIED:		PRODUCT SPEC			HEADER ASSEMBLY, 8.0MM [.315] VERTICAL, 0.80MM CL, MICTOR SB
0 PLC	±	APPLICATION SPEC			SIZE
1 PLC	± 0.30[01]	WEIGHT			A2
2 PLC	± 0.15[005]				CAGE CODE
3 PLC	± 0.08[0025]				00779
4 PLC	±				DRAWING NO
ANGLE	±				1658014
FINISH					RESTRICTED TO
MATERIAL		CUSTOMER DRAWING		SCALE	3:1
				SHEET	1 of 2
				REV	H

AMP 1471-9 REV 31MAR2000

1658014

A

4

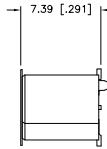
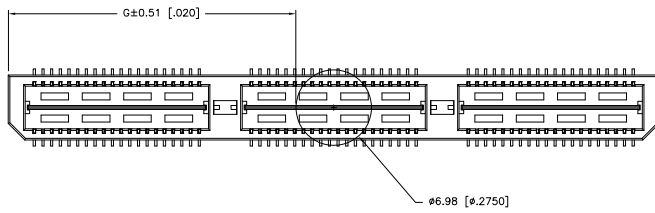
3

2

1

THIS DRAWING IS UNPUBLISHED. RELEASED FOR PUBLICATION  
 © COPYRIGHT BY TYCO ELECTRONICS CORPORATION. ALL RIGHTS RESERVED.

LOC	DIST	REVISIONS					
AD	00	P	LR	DESCRIPTION	DATE	BY	APP
				SEE SHEET 1			



26.52(1.044)	40.00(1.575)	2	0.102(0.040)	58.50(2.303)	55.20(2.173)	60.00(2.362)	YES	POCKET TAPE	YES	84	7-1658014-3	
16.51(0.650)	20.00(0.7874)	1	0.102(0.040)	38.48(1.515)	35.20(1.386)	40.00(1.575)	YES	POCKET TAPE	YES	56	7-1658014-2	
6.50(0.256)	0.000	0	0.102(0.040)	18.49(0.728)	15.20(0.598)	20.00(0.787)	YES	POCKET TAPE	YES	28	7-1658014-1	
26.52(1.044)	40.00(1.575)	2	0.102(0.040)	58.50(2.303)	55.20(2.173)	60.00(2.362)	YES	POCKET TAPE	NO	120	6-1658014-3	
16.51(0.650)	20.00(0.7874)	1	0.102(0.040)	38.48(1.515)	35.20(1.386)	40.00(1.575)	YES	POCKET TAPE	NO	80	6-1658014-2	
6.50(0.256)	0.000	0	0.102(0.040)	18.49(0.728)	15.20(0.598)	20.00(0.787)	YES	POCKET TAPE	NO	40	6-1658014-1	
-	40.00(1.575)	2	0.102(0.040)	58.50(2.303)	55.20(2.173)	60.00(2.362)	NO	POCKET TAPE	YES	84	5-1658014-3	
-	20.00(0.7874)	1	0.102(0.040)	38.48(1.515)	35.20(1.386)	40.00(1.575)	NO	POCKET TAPE	YES	56	5-1658014-2	
-	0.000	0	0.102(0.040)	18.49(0.728)	15.20(0.598)	20.00(0.787)	NO	POCKET TAPE	YES	28	5-1658014-1	
-	40.00(1.575)	2	0.102(0.040)	58.50(2.303)	55.20(2.173)	60.00(2.362)	NO	POCKET TAPE	NO	120	4-1658014-3	
-	20.00(0.7874)	1	0.102(0.040)	38.48(1.515)	35.20(1.386)	40.00(1.575)	NO	POCKET TAPE	NO	80	4-1658014-2	
-	0.000	0	0.102(0.040)	18.49(0.728)	15.20(0.598)	20.00(0.787)	NO	POCKET TAPE	NO	40	4-1658014-1	
46.51(1.831)	80.00(3.150)	4	0.152(0.060)	98.50(3.748)	95.20(3.748)	100.00(3.937)	YES	TRAY	YES	140	3-1658014-5	
36.53(1.438)	60.00(2.362)	3	0.152(0.060)	78.49(3.090)	75.20(2.961)	80.00(3.150)	YES	TRAY	YES	112	3-1658014-4	
26.52(1.044)	40.00(1.575)	2	0.102(0.040)	58.50(2.303)	55.20(2.173)	60.00(2.362)	YES	TRAY	YES	84	3-1658014-3	
16.51(0.650)	20.00(0.7874)	1	0.102(0.040)	38.48(1.515)	35.20(1.386)	40.00(1.575)	YES	TRAY	YES	56	3-1658014-2	
6.50(0.256)	0.000	0	0.102(0.040)	18.49(0.728)	15.20(0.598)	20.00(0.787)	YES	TRAY	YES	28	3-1658014-1	
46.51(1.831)	80.00(3.150)	4	0.152(0.060)	98.50(3.748)	95.20(3.748)	100.00(3.937)	YES	TRAY	NO	200	2-1658014-5	
36.53(1.438)	60.00(2.362)	3	0.152(0.060)	78.49(3.090)	75.20(2.961)	80.00(3.150)	YES	TRAY	NO	160	2-1658014-4	
26.52(1.044)	40.00(1.575)	2	0.102(0.040)	58.50(2.303)	55.20(2.173)	60.00(2.362)	YES	TRAY	NO	120	2-1658014-3	
16.51(0.650)	20.00(0.7874)	1	0.102(0.040)	38.48(1.515)	35.20(1.386)	40.00(1.575)	YES	TRAY	NO	80	2-1658014-2	
6.50(0.256)	0.000	0	0.102(0.040)	18.49(0.728)	15.20(0.598)	20.00(0.787)	YES	TRAY	NO	40	2-1658014-1	
-	80.00(3.150)	4	0.152(0.060)	98.50(3.748)	95.20(3.748)	100.00(3.937)	NO	TRAY	YES	140	1-1658014-5	
-	60.00(2.362)	3	0.152(0.060)	78.49(3.090)	75.20(2.961)	80.00(3.150)	NO	TRAY	YES	112	1-1658014-4	
-	40.00(1.575)	2	0.102(0.040)	58.50(2.303)	55.20(2.173)	60.00(2.362)	NO	TRAY	YES	84	1-1658014-3	
-	20.00(0.7874)	1	0.102(0.040)	38.48(1.515)	35.20(1.386)	40.00(1.575)	NO	TRAY	YES	56	1-1658014-2	
-	0.000	0	0.102(0.040)	18.49(0.728)	15.20(0.598)	20.00(0.787)	NO	TRAY	YES	28	1-1658014-1	
-	80.00(3.150)	4	0.152(0.060)	98.50(3.748)	95.20(3.748)	100.00(3.937)	NO	TRAY	NO	200	1658014-5	
-	60.00(2.362)	3	0.152(0.060)	78.49(3.090)	75.20(2.961)	80.00(3.150)	NO	TRAY	NO	160	1658014-4	
-	40.00(1.575)	2	0.102(0.040)	58.50(2.303)	55.20(2.173)	60.00(2.362)	NO	TRAY	NO	120	1658014-3	
-	20.00(0.7874)	1	0.102(0.040)	38.48(1.515)	35.20(1.386)	40.00(1.575)	NO	TRAY	NO	80	1658014-2	
-	0.000	0	0.102(0.040)	18.49(0.728)	15.20(0.598)	20.00(0.787)	NO	TRAY	NO	40	1658014-1	
G	F	E	D	C	B	A		POLYIMIDE	PACKAGING	DIFF	NO OF	PART
								FILM PAD	TYPE	PAIR	POS	NUMBER

THIS DRAWING IS A CONTROLLED DOCUMENT.

DIMENSIONS: mm [INCHES]

TO DIMENSIONS UNLESS SPECIFIED

0. PLC ± 0.13 [0.1]

1. PLC ± 0.13 [0.05]

2. PLC ± 0.08 [0.0025]

3. PLC ± 0.08 [0.0025]

ANGLES ± 0.5 °

FINISH SEE SHEET 1

THIS DRAWING IS A CONTROLLED DOCUMENT.

BY: B. CARBO 30MAY03

CHK: D. DIXON 30MAY03

APP: D. DIXON 30MAY03

PROJECT SPEC: -

APPLICATION SPEC: -

WEIGHT: -

CUSTOMER DRAWING

TYCO Electronics  
 Tyco Electronics Corporation  
 Harrisburg, PA 17105-3608

HEADER ASSEMBLY, 8.0MM [.315] VERTICAL,  
 0.80MM CL,  
 MICTOR SB

SIZE: A2 CASE CODE: C-1658014 DRAWING NO: 00779

RESTRICTED TO: -

SCALE: 3:1 SHEET: 2 of 2 REV: H

AMP 1471-9 REV 31MAR2000

1658014

A