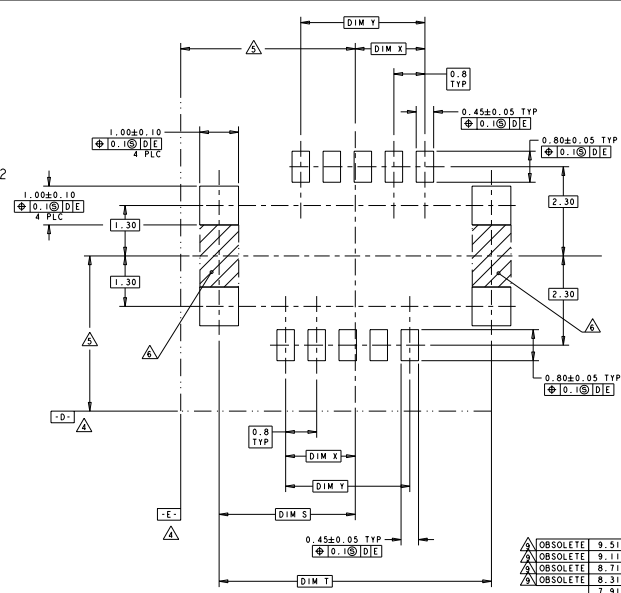
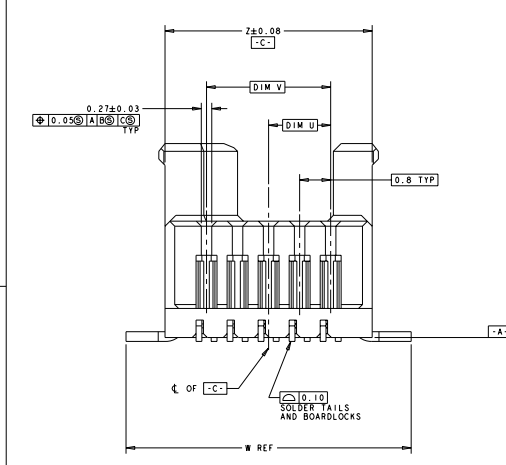
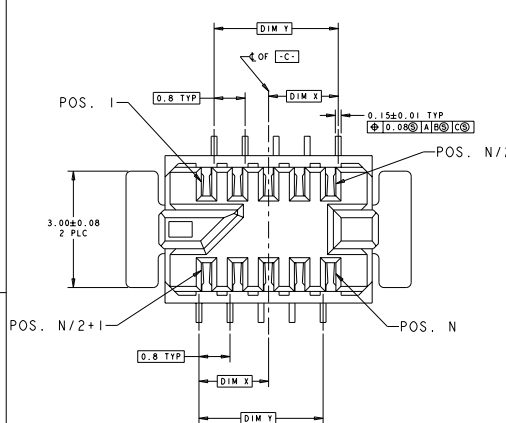
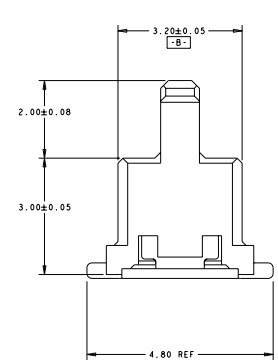


DATE: 08/15/2005  
 REVISED FOR FUNCTIONALITY  
 BY: JAP, JACOBSON, ALL RIGHTS RESERVED



PC BOARD LAYOUT  
 SCALE 30:1



REV	DATE	DESCRIPTION	BY	CHK	APP
0		REV PER QDC-0326-01	JACOBSON	RB	JM
A		REV PER QDC-0367-03	JACOBSON	RB	JM
B		QDC-0726-04	JACOBSON	RB	JM
B1		REVISED PER ECO-99-025699	JACOBSON	RA	REG

- △ HOUSING MATERIAL: UL94 V-0 RATED LCP, COLOR: NATURAL.
- △ CONTACT MATERIAL: PHOS BRONZE
- △ BOARDLOCK MATERIAL: BRASS
- △ CONTACT PLATING: 0.75 μm MIN GOLD IN MATING AREA  
0.13 μm - 0.20 μm GOLD IN SOLDER AREA,  
BOTH OVER 1.27 μm MIN NICKEL ON ENTIRE STOCK.
- △ BOARDLOCK PLATING: 3.8 μm MIN BRIGHT TIN/LEAD ON ENTIRE STOCK  
OVER 1.27 μm MIN NICKEL ON ENTIRE STOCK.
- △ DATUMS ESTABLISHED BY CUSTOMER.
- △ BASIC DIMENSIONS ESTABLISHED BY CUSTOMER.
- △ NO TRACES ON EXTERNAL BOARD LAYER IN THIS AREA.
- △ BOARDLOCK PLATING: 3.8 μm MIN TIN ON ENTIRE STOCK  
OVER 1.27 μm MIN NICKEL ON ENTIRE STOCK
- △ ROHS 2002/95/EC COMPLIANT.
- △ OBSOLETE PARTS: OBSOLETE CIS STREAMLINING PER D.RENAUD/D.SINISI

REV	DIM T	DIM S	DIM U	DIM V	W REF	DIM Z	DIM Y	Z	FINISH	NO. OF POS.	PART NUMBER
△ OBSOLETE	9.51	19.02	7.6	15.2	19.35	7.795	15.2	17.34		40	6-1375870-8
△ OBSOLETE	9.11	18.22	7.2	14.4	18.55	7.395	14.4	16.54		38	6-1375870-7
△ OBSOLETE	8.71	17.42	6.8	13.6	17.75	6.995	13.6	15.74		36	6-1375870-6
△ OBSOLETE	8.31	16.62	6.4	12.8	16.95	6.595	12.8	14.94		34	6-1375870-5
△ OBSOLETE	7.91	15.82	6.0	12.0	16.15	6.195	12.0	14.14		32	6-1375870-4
△ OBSOLETE	7.51	15.02	5.6	11.2	15.35	5.795	11.2	13.34		30	6-1375870-3
△ OBSOLETE	7.11	14.22	5.2	10.4	14.55	5.395	10.4	12.54		28	6-1375870-2
△ OBSOLETE	6.71	13.42	4.8	9.6	13.75	4.995	9.6	11.74		26	6-1375870-1
△ OBSOLETE	6.31	12.62	4.4	8.8	12.95	4.595	8.8	10.94		24	6-1375870-0
△ OBSOLETE	5.91	11.82	4.0	8.0	12.15	4.195	8.0	10.14		22	5-1375870-9
△ OBSOLETE	5.51	11.02	3.6	7.2	11.35	3.795	7.2	9.34		20	5-1375870-8
△ OBSOLETE	5.11	10.22	3.2	6.4	10.55	3.395	6.4	8.54		18	5-1375870-7
△ OBSOLETE	4.71	9.42	2.8	5.6	9.75	2.995	5.6	7.74		16	5-1375870-6
△ OBSOLETE	4.31	8.62	2.4	4.8	8.95	2.595	4.8	6.94		14	5-1375870-5
△ OBSOLETE	3.91	7.82	2.0	4.0	8.15	2.195	4.0	6.14		12	5-1375870-4
△ OBSOLETE	3.51	7.02	1.6	3.2	7.35	1.795	3.2	5.34		10	5-1375870-3
△ OBSOLETE	3.11	6.22	1.2	2.4	6.55	1.395	2.4	4.54		8	5-1375870-2
△ OBSOLETE	2.71	5.42	0.8	1.6	5.75	0.995	1.6	3.74		6	5-1375870-1
△ OBSOLETE	9.51	19.02	7.6	15.2	19.35	7.795	15.2	17.34		40	1-1375870-8
△ OBSOLETE	9.11	18.22	7.2	14.4	18.55	7.395	14.4	16.54		38	1-1375870-7
△ OBSOLETE	8.71	17.42	6.8	13.6	17.75	6.995	13.6	15.74		36	1-1375870-6
△ OBSOLETE	8.31	16.62	6.4	12.8	16.95	6.595	12.8	14.94		34	1-1375870-5
△ OBSOLETE	7.91	15.82	6.0	12.0	16.15	6.195	12.0	14.14		32	1-1375870-4
△ OBSOLETE	7.51	15.02	5.6	11.2	15.35	5.795	11.2	13.34		30	1-1375870-3
△ OBSOLETE	7.11	14.22	5.2	10.4	14.55	5.395	10.4	12.54		28	1-1375870-2
△ OBSOLETE	6.71	13.42	4.8	9.6	13.75	4.995	9.6	11.74		26	1-1375870-1
△ OBSOLETE	6.31	12.62	4.4	8.8	12.95	4.595	8.8	10.94		24	1-1375870-0
△ OBSOLETE	5.91	11.82	4.0	8.0	12.15	4.195	8.0	10.14		22	1375870-9
△ OBSOLETE	5.51	11.02	3.6	7.2	11.35	3.795	7.2	9.34		20	1375870-8
△ OBSOLETE	5.11	10.22	3.2	6.4	10.55	3.395	6.4	8.54		18	1375870-7
△ OBSOLETE	4.71	9.42	2.8	5.6	9.75	2.995	5.6	7.74		16	1375870-6
△ OBSOLETE	4.31	8.62	2.4	4.8	8.95	2.595	4.8	6.94		14	1375870-5
△ OBSOLETE	3.91	7.82	2.0	4.0	8.15	2.195	4.0	6.14		12	1375870-4
△ OBSOLETE	3.51	7.02	1.6	3.2	7.35	1.795	3.2	5.34		10	1375870-3
△ OBSOLETE	3.11	6.22	1.2	2.4	6.55	1.395	2.4	4.54		8	1375870-2
△ OBSOLETE	2.71	5.42	0.8	1.6	5.75	0.995	1.6	3.74		6	1375870-1

MILLER ELECTRONIC CORPORATION 1000 W. BROAD ST. HARRISBURG, PA 17105-3600 TEL: 717-631-1000 FAX: 717-631-1001 WWW: WWW.MILLER-EC.COM	DATE: 07JUN2005 DRAWN BY: JACOBSON CHECKED BY: JACOBSON APPROVED BY: JACOBSON PART NO: 168-1955 REV: 114-13051 SEE TABLE	AMP AMPMODU MICRO INTERCONNECT RECEPTACLE ASSEMBLY CASE CODE: 00779 PART NO: 1375870 REV: 20-11	Type Electronics Corporation Harrisburg, PA 17105-3600
---	--	--	---