

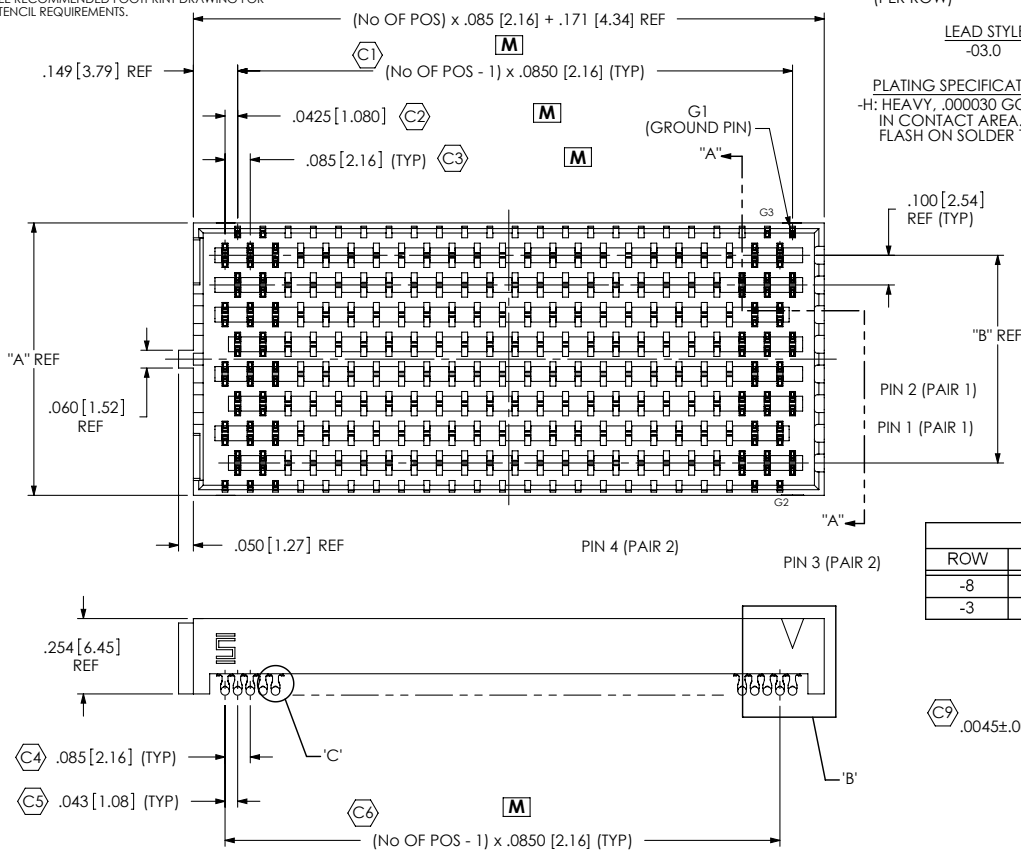
**REVISION M**

DO NOT SCALE FROM THIS PRINT

**NOTES:**

1.  $\text{\textcircled{C}}$  REPRESENTS A CRITICAL DIMENSION.
2. MINIMUM PUSHOUT FORCE: .75 LBS.
3. PARTS TO BE PACKAGED IN TRAYS.
4. MUST BE CHECKED ON EVERY 6 CONSECUTIVE PINS.
5. SEE RECOMMENDED FOOTPRINT DRAWING FOR STENCIL REQUIREMENTS.

**FIG. 1**  
DPAF-23-03.0-H-8-1 SHOWN  
(ALL CONTACTS NOT SHOWN FOR CLARITY)



**DPAF-XX-03.0-X-X-X-XX**

No OF POSITIONS  
-04, -06, -08, -15, -23, \*-30  
(PER ROW)

LEAD STYLE  
-03.0

PLATING SPECIFICATION  
-H: HEAVY, .000030 GOLD IN CONTACT AREA. GOLD FLASH ON SOLDER TAIL.

OPTION  
-A: ALIGNMENT PIN (SEE FIG. 2, SHT 3)  
-K: KAPTON PAD (SEE FIG. 3, SHT 3)  
-TR: TAPE & REEL

SOLDER CRIMP MATERIAL  
-1: 63% TIN / 37% LEAD (USE SUB-C-191-03.0-H-1)  
-2: 96.5% TIN / 3% SILVER / .5% COPPER (USE SUB-C-191-03.0-H-2)

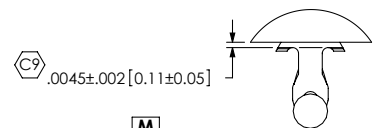
ROW  
-8: 8 DIFFERENTIAL PAIR ROWS  
-3: 3 DIFFERENTIAL PAIR ROWS  
\* = NOT RELEASED FOR PRODUCTION

**TABLE 1 - ARRAY SIZE TABLE**

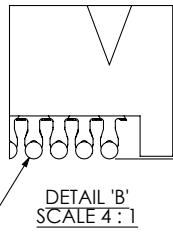
SIZE	DIFFERENTIAL PAIRS PER ARRAY	
	3 ROW	8 ROW
-04	6 PAIRS	16 PAIRS
-06	12 PAIRS	32 PAIRS
-08	18 PAIRS	48 PAIRS
-15	39 PAIRS	104 PAIRS
-23	63 PAIRS	168 PAIRS
-30	84 PAIRS	N/A

**TABLE 2**

ROW	"A"	"B"	"C"
-8	.918[23.32]	.700[17.78]	.209[5.31]
-3	.418[10.62]	.200[5.08]	.096[2.44]



**DETAIL 'C'**  
SCALE 8:1  
(ALL CONTACTS NOT SHOWN FOR CLARITY)



**DETAIL 'B'**  
SCALE 4:1

**PATENT NUMBERS**  
6979238 / 7137832  
6969286 / 7178232  
7159312 / 7172438  
7052337 / 7125293

UNLESS OTHERWISE SPECIFIED, DIMENSIONS ARE IN INCHES. TOLERANCES ARE:  
DECIMALS .XX: ±.01 [3] ANGLES 2°  
.XXX: ±.005 [13]  
.XXXX: ±.0020 [051]  
MATERIAL: DO NOT SCALE DRAWING INSULATOR: L.C.P., COLOR: BLACK CONTACT OR TERMINAL: COPPER ALLOY  
SHEET SCALE: 2:1

**PROPRIETARY NOTE**  
THIS DOCUMENT CONTAINS INFORMATION CONFIDENTIAL AND PROPRIETARY TO SAMTEC, INC. AND SHALL NOT BE REPRODUCED OR TRANSFERRED TO OTHER DOCUMENTS OR DISCLOSED TO OTHERS OR USED FOR ANY PURPOSE OTHER THAN THAT WHICH IT WAS OBTAINED WITHOUT THE EXPRESSED WRITTEN CONSENT OF SAMTEC, INC.

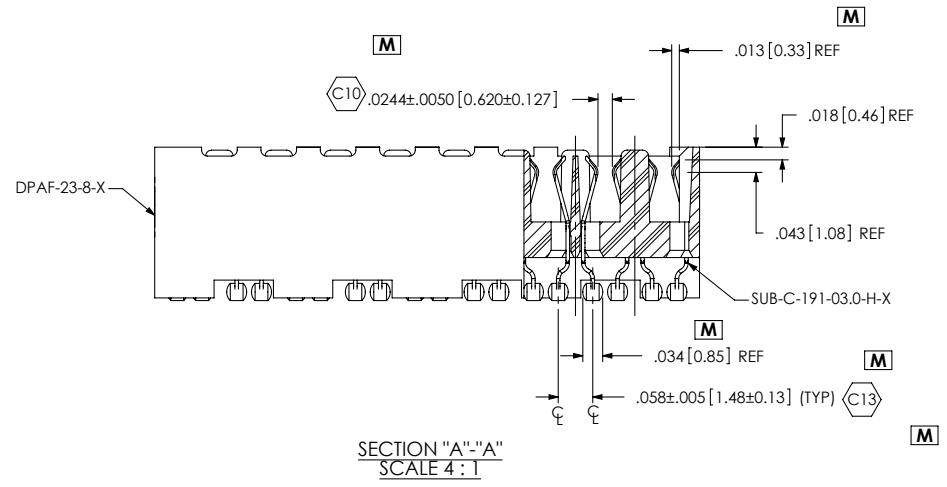


520 PARK EAST BLVD, NEW ALBANY, IN 47150  
PHONE: 812-944-6733 FAX: 812-948-5047  
e-Mail: info@SAMTEC.com code: 55322

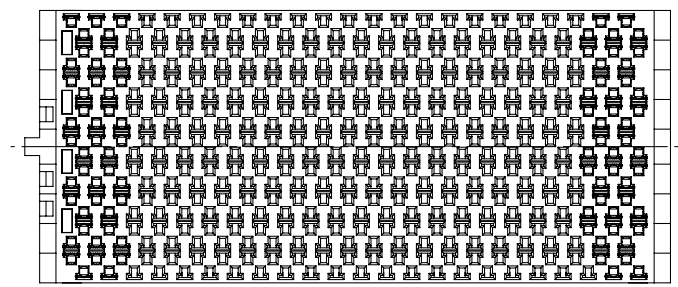
DESCRIPTION: .085 PITCH DP SOCKET ASSEMBLY  
DWG. NO. DPAF-XX-03.0-X-X-X-XX  
BY: CHAD F 06/06/2003 SHEET 1 OF 3

F:\DWG\MISC\MKTG\DPAF-XX-03.0-X-X-X-MKT.SLDDRW


REVISION M



SECTION "A"-"A"  
SCALE 4:1



(BOTTOM VIEW PROJECTED FROM SHEET 1)  
(ALL CONTACTS NOT SHOWN FOR CLARITY)

<p><b>PROPRIETARY NOTE</b> THIS DOCUMENT CONTAINS INFORMATION CONFIDENTIAL AND PROPRIETARY TO SAMTEC, INC. AND SHALL NOT BE REPRODUCED OR TRANSFERRED TO OTHER DOCUMENTS OR DISCLOSED TO OTHERS OR USED FOR ANY PURPOSE OTHER THAN THAT WHICH IT WAS OBTAINED WITHOUT THE EXPRESSED WRITTEN CONSENT OF SAMTEC, INC.</p> <p>DO NOT SCALE DRAWING</p> <p>SHEET SCALE: 2:1</p>	 520 PARK EAST BLVD, NEW ALBANY, IN 47150 PHONE: 812-944-6733 FAX: 812-948-5047 e-Mail: info@SAMTEC.com code: 55322	
	DESCRIPTION: .085 PITCH DP SOCKET ASSEMBLY	
	DWG. NO. DPAF-XX-03.0-X-X-X-XX	
	BY: CHAD F	06/06/2003

F:\DWG\MISC\MKTG\DPAF-XX-03.0-X-X-XX-MKT.SLDDRW

REVISION M

FIG. 2  
DPAF-23-03.0-H-8-1-A SHOWN  
(SAME AS FIG. 1, EXCEPT AS SHOWN)  
(ALL CONTACTS NOT SHOWN FOR CLARITY)

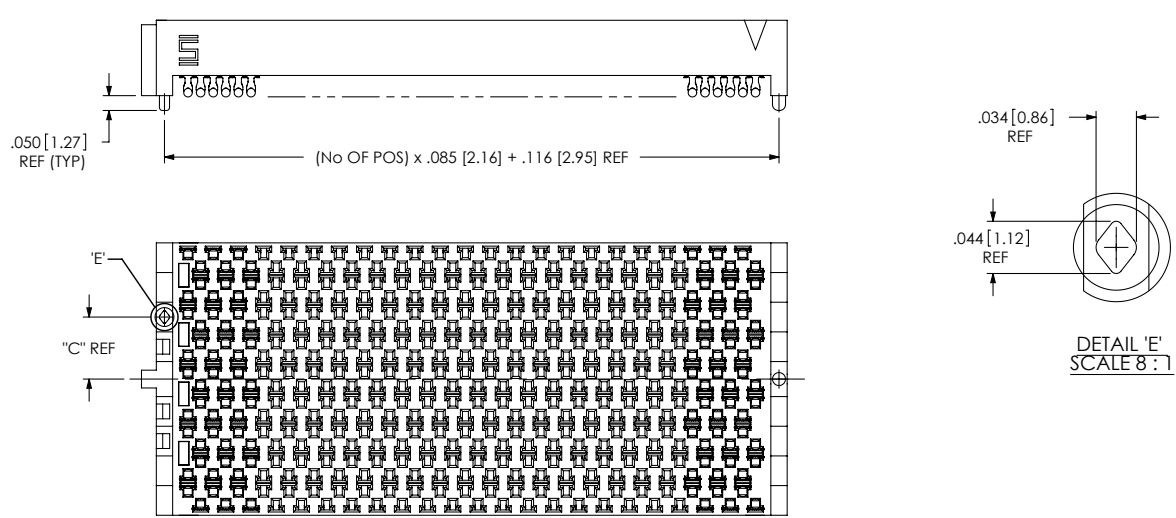
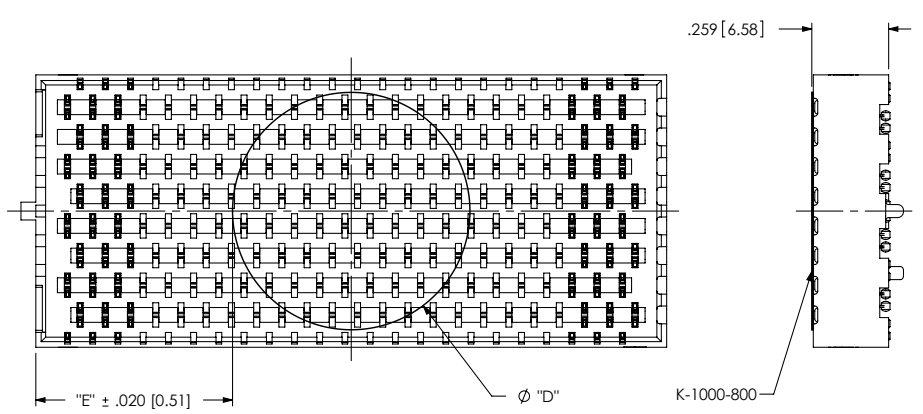


FIG. 3  
DPAF-23-03.0-H-8-1-A-K SHOWN  
(SAME AS FIG. 1, EXCEPT AS SHOWN)  
(ALL CONTACTS NOT SHOWN FOR CLARITY)

TABLE 3			
ROW	# OF POSITIONS	DIA "D"	DIM "E"
-3	4,6,8,15,23,30	.30[7.5]	"E" = (No OF POS x .085[2.16] + .171[4.34] - "D") / 2
-8	4,6	.30[7.5]	
-8	8,15,23,30	.80[20.3]	



**PROPRIETARY NOTE**  
THIS DOCUMENT CONTAINS INFORMATION  
CONFIDENTIAL AND PROPRIETARY TO  
SAMTEC, INC. AND SHALL NOT BE REPRODUCED  
OR TRANSFERRED TO OTHER DOCUMENTS OR  
DISCLOSED TO OTHERS OR USED FOR ANY  
PURPOSE OTHER THAN THAT WHICH IT WAS  
OBTAINED WITHOUT THE EXPRESSED WRITTEN  
CONSENT OF SAMTEC, INC.

DO NOT SCALE DRAWING

SHEET SCALE: 2:1

**samtec**  
520 PARK EAST BLVD, NEW ALBANY, IN 47150  
PHONE: 812-944-6733 FAX: 812-948-5047  
e-Mail: info@SAMTEC.com code: 55322

DESCRIPTION: .085 PITCH DP SOCKET ASSEMBLY

DWG. NO. DPAF-XX-03.0-X-X-X-XX

BY: CHAD F 06/06/2003 SHEET 3 OF 3

F:\DWG\MISC\MKTG\DPAF-XX-03.0-X-X-XX-MKT.SLDDRW