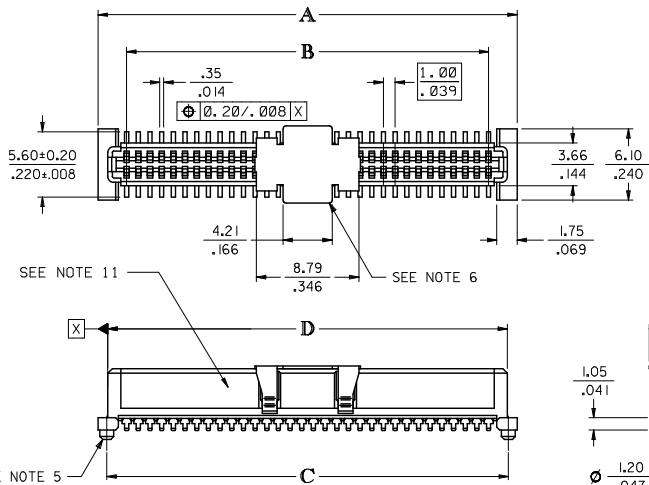
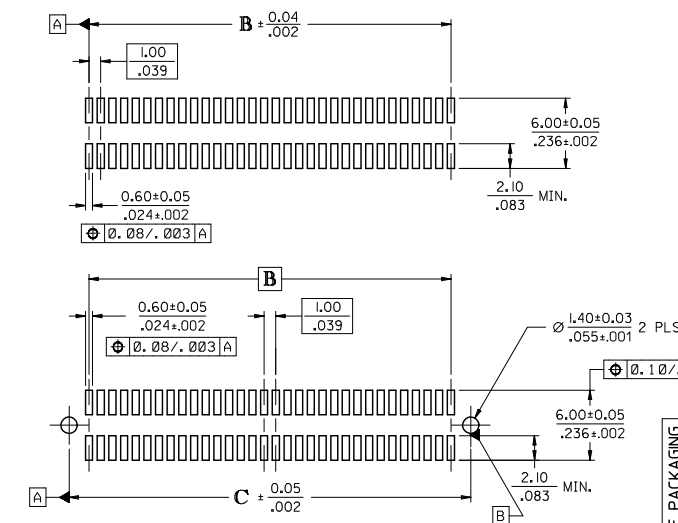
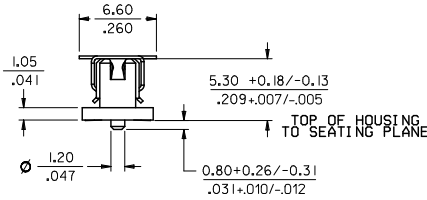


13 12 11 10 9 8 7 6 5 4 3 2 1



CIRCUIT SIZE	DIM. A	DIM. B	DIM. C	DIM. D
20	13.90	9.00	12.40	12.22
	.547	.354	.488	.481
30	18.90	14.00	17.40	17.22
	.744	.551	.685	.678
40	23.90	19.00	22.40	22.22
	.941	.748	.882	.875
50	28.90	24.00	27.40	27.22
	1.138	.945	1.079	1.072
60	33.90	29.00	32.40	32.22
	1.335	1.142	1.276	1.269
64	35.90	31.00	34.40	34.22
	1.413	1.220	1.354	1.347
70	38.90	34.00	37.40	37.22
	1.531	1.339	1.472	1.465
80	43.90	39.00	42.40	42.22
	1.728	1.535	1.669	1.662
84	45.90	41.00	44.40	44.22
	1.807	1.614	1.748	1.741
90	48.90	44.00	47.40	47.22
	1.925	1.732	1.866	1.859
100	53.90	49.00	52.40	52.22
	2.122	1.929	2.063	2.056
110	58.90	54.00	57.40	57.22
	2.319	2.126	2.260	2.253
120	63.90	59.00	62.40	62.22
	2.516	2.323	2.457	2.450



- NOTES:**
- HOUSING MATERIAL: GLASS FILLED LIQUID CRYSTAL POLYMER (LCP); UL 94V-0; SEE SHEET 2 FOR COLOR.
TERMINAL MATERIAL: PHOSPHOR BRONZE; 0.205/.0080 THICK
VACUUM CAP MATERIAL: STAINLESS STEEL; 0.255/.0100 THICK
 - CONTACT PLATING FINISH: REFER TO CHART ON SHEET 2
 - THIS PART, WHEN MATED WITH MOLEX 1.0mm PLUG CONNECTOR SERIES 71439, CONFORMS TO MOLEX PRODUCT SPECIFICATION PS-71436-9999. REFER TO CHART ON SHEET 2 FOR MATED STACK HEIGHTS FOR THIS RECEPTACLE.
 - PACKAGING SPECIFICATIONS: REFER TO CHART ON SHEET 2.
 - PEGS ARE OPTIONAL. REFER TO CHART ON SHEET 2.
 - VACUUM PICK & PLACE CAP IS OPTIONAL. REFER TO CHART ON SHEET 2.
 - THIS PART CONFORMS TO EIA STANDARD 700 AAAB FOR 1.0mm TWO-PART CONNECTORS FOR USE WITH PARALLEL PRINTED BOARDS.
 - COPLANARITY OF SMT TAILS; 0.10 MM/.004 INCH MAXIMUM
 - 64-CIRCUIT RECEPTACLE ASSEMBLY WITH PEGS AND VACUUM CAP SHOWN FOR ILLUSTRATION PURPOSES ONLY.
 - INCH DIMENSIONS SHOWN FOR REFERENCE ONLY.
 - ASSEMBLY TO HAVE DATE CODE: XX XX
WEEK _____ YEAR

RECOMMENDED PCB LAYOUT (WITH AND WITHOUT PEGS)
RECOMMENDED PCB THICKNESS: 1.00±0.10/.039±.004

CHG TUBE PACKAGING EC NO. UCP2009-1286 DRAWN BY: 2008/12/10 CHK'D BY: CHKOSMART APPR: SHILLER 2008/12/10	QUALITY SYMBOLS ▽=0 ▽=0	GENERAL TOLERANCES (UNLESS SPECIFIED)		DIMENSION STYLE		SCALE	DESIGN UNITS	THIRD ANGLE PROJECTION	
		mm	INCH	MM/IN	INCH	INCH	INCH	INCH	
		4 PLACES ±---	±---	DRAWN BY	DATE	TITLE	ASSY MFG. 1.0MM BOARD TO BOARD RECEPT CONNECTOR 5.30/209 HIGH		
		3 PLACES ±---	±.005	REED	1995/04/03	MOLEX INCORPORATED	MOLEX INCORPORATED		
2 PLACES ±0.13	±.01	CHECKED BY	DATE	MATERIAL NO. DOCUMENT NO. SHEET NO.					
1 PLACE ±0.25	±---	REED	1995/04/03	SEE TABLE	SDA-71439-0***	1 OF 2			
ANGULAR ±1/2°		APPROVED BY	DATE	THIS DRAWING CONTAINS INFORMATION THAT IS PROPRIETARY TO MOLEX INCORPORATED AND SHOULD NOT BE USED WITHOUT WRITTEN PERMISSION					
DRAFT WHERE APPLICABLE MUST REMAIN WITHIN DIMENSIONS		BIXLER	1995/04/03						

12 11 10 9 8 7 6 5 4 3 2 1

13 12 11 10 9 8 7 6 5 4 3 2 1

WHITE (NATURAL) MATERIAL

PART NUMBER	CIRCUIT SIZE	CONTACT PLATING SEE NOTE BELOW CHARTS	PEGS	PICK & PLACE CAP	PACKAGING SPEC. NUMBER	PACKAGING TYPE
71439-0164	64	30 GOLD	YES	NO	PK-70873-013	TUBE
71439-0264	64	50 GOLD	NO	YES	PK-70873-063	TAPE & REEL
71439-0364	64	30 GOLD	YES	YES	PK-70873-014	TUBE
71439-0464	64	30 GOLD	YES	YES	PK-70873-063	TAPE & REEL
71439-0564	64	30 GOLD	NO	NO	PK-70873-015	TUBE
71439-0764	64	30 GOLD	NO	YES	PK-70873-017	TUBE
71439-0864	64	30 GOLD	NO	YES	PK-70873-063	TAPE & REEL
71439-0664	64	50 GOLD	YES	NO	PK-70873-013	TUBE
71439-0064	64	50 GOLD	NO	NO	PK-70873-015	TUBE

BLACK MATERIAL

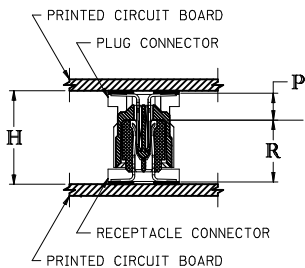
PART NUMBER	CIRCUIT SIZE	CONTACT PLATING SEE NOTE BELOW CHARTS	PEGS	PICK & PLACE CAP	PACKAGING SPEC. NUMBER	PACKAGING TYPE
71439-0964	64	30 GOLD	NO	YES	PK-70873-063	TAPE & REEL

CONTACT PLATING:

- 30 GOLD - 0.76 MICROMETER/30 MICROINCH MINIMUM GOLD IN CONTACT AREA AND 1.91 MICROMETER/75 MICROINCH MINIMUM TIN IN SOLDER TAIL AREA. NICKEL UNDERPLATE OVER ENTIRE TERMINAL.
- 50 GOLD - 1.27 MICROMETER/50 MICROINCH MINIMUM GOLD IN CONTACT AREA AND 1.91 MICROMETER/75 MICROINCH MINIMUM TIN IN SOLDER TAIL AREA. NICKEL UNDERPLATE OVER ENTIRE TERMINAL.

RECOMMENDED PLUG/RECEPTACLE COMBINATION FOR MATED STACK HEIGHT PER EIA STANDARD 700 AAAB

MATED STACK HEIGHT	RECEPTACLE HEIGHT	RECEPTACLE SERIES NO.	PLUG HEIGHT	PLUG SERIES NO.
8.00/.315	5.30/.209	71439-0***	2.30/.090	71436-0***
9.00/.354	5.30/.209	71439-0***	3.30/.130	71436-1***
10.00/.394	5.30/.209	71439-0***	4.30/.169	71436-2***



$$\begin{aligned} & \text{PLUG STACK HEIGHT} \\ & + \text{RECEPTACLE STACK HEIGHT} \\ & + 0.40/.016 \text{ (SOLDER PASTE ALLOWANCE)} \\ & = \text{MATED STACK HEIGHT} \end{aligned}$$

P = PLUG STACK HEIGHT
 R = RECEPTACLE STACK HEIGHT
 H = MATED STACK HEIGHT

CHG. TUBE PACKAGING EC. NO. UCP2009-1266 DRAWN BY: BARKER 2008/12/10 CHKD BY: SMART 2008/12/10 APPR: SPILLER 2008/12/10 REV:	QUALITY SYMBOLS	GENERAL TOLERANCES (UNLESS SPECIFIED)	DIMENSION STYLE MM/IN	SCALE INCH	DESIGN UNITS INCH	THIRD ANGLE PROJECTION																												
	$\nabla=0$ $\nabla=0$	<table border="1"> <tr> <th></th> <th>mm</th> <th>INCH</th> </tr> <tr> <td>4 PLACES</td> <td>±.005</td> <td>±.0005</td> </tr> <tr> <td>3 PLACES</td> <td>±.005</td> <td>±.0005</td> </tr> <tr> <td>2 PLACES</td> <td>±.013</td> <td>±.001</td> </tr> <tr> <td>1 PLACE</td> <td>±.025</td> <td>±.001</td> </tr> </table>		mm	INCH	4 PLACES	±.005	±.0005	3 PLACES	±.005	±.0005	2 PLACES	±.013	±.001	1 PLACE	±.025	±.001	<table border="1"> <tr> <th>DRAWN BY</th> <th>DATE</th> </tr> <tr> <td>REED</td> <td>1995/04/03</td> </tr> <tr> <th>CHECKED BY</th> <th>DATE</th> </tr> <tr> <td>REED</td> <td>1995/04/03</td> </tr> <tr> <th>APPROVED BY</th> <th>DATE</th> </tr> <tr> <td>BIXLER</td> <td>1995/04/03</td> </tr> </table>	DRAWN BY	DATE	REED	1995/04/03	CHECKED BY	DATE	REED	1995/04/03	APPROVED BY	DATE	BIXLER	1995/04/03	TITLE	ASSY MFG. 1.0MM BOARD TO BOARD RECEPT CONNECTOR 5.30/209 HIGH		
		mm	INCH																															
	4 PLACES	±.005	±.0005																															
3 PLACES	±.005	±.0005																																
2 PLACES	±.013	±.001																																
1 PLACE	±.025	±.001																																
DRAWN BY	DATE																																	
REED	1995/04/03																																	
CHECKED BY	DATE																																	
REED	1995/04/03																																	
APPROVED BY	DATE																																	
BIXLER	1995/04/03																																	
	DRAFT WHERE APPLICABLE MUST REMAIN WITHIN DIMENSIONS	SEE TABLE	MATERIAL NO.	DOCUMENT NO.	SDA-71439-0***	SHEET NO. 2 OF 2																												

12 11 10 9 8 7 6 5 4 3 2 1