

ASP-134486-01

REVISION

A	GP	R SKEES
11/9/2007	ECN-82336	
RELEASE FOR PRODUCTION.		
B	DS	M HAMMAN
5/30/2008	ECN-91991	
ADD FOOTPRINT SHEETS 2 & 3		
C	TP	J HENRY
12/16/2008	ECN-102547	
NOTES, CRG NOTE #4 FROM FRONT TRAY TO TAPE & REEL. UPDATE BOM FROM TRAY-SEAF019-40-6.5-10-AP TO CT-SEAF028MS. TOP VIEW SHEET 1. RECOMMENDED PCB LAYOUT SHEET 2 & RECOMMENDED STENCIL SHEET 3. ADD VITA SPEC PINOUTS TO THESE VIEWS. ROWS A THRU K. AND POSITIONS 01-40. ADD K-DOT-404-500-005 TO BOM & AND ALL VIEWS		

NOTES:

1. VITA 57 CONNECTOR.
2. Ⓢ REPRESENTS A CRITICAL DIMENSION.
3. MINIMUM PUSHOUT FORCE: .75 LB.
4. PARTS TO BE PACKAGED IN TAPE & REEL. Ⓢ

DATE: _____

COMPANY: _____

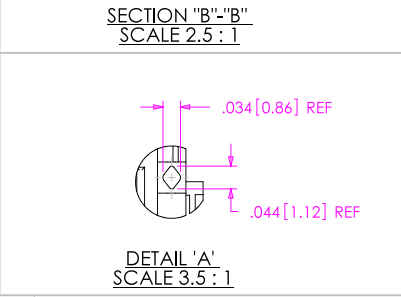
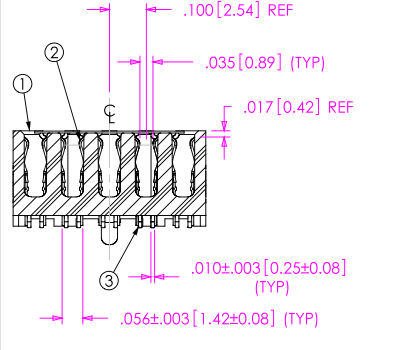
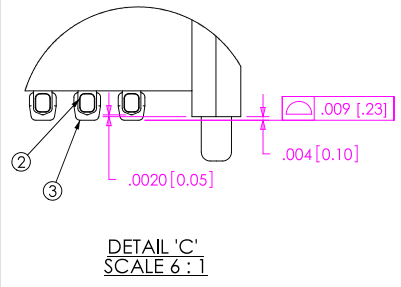
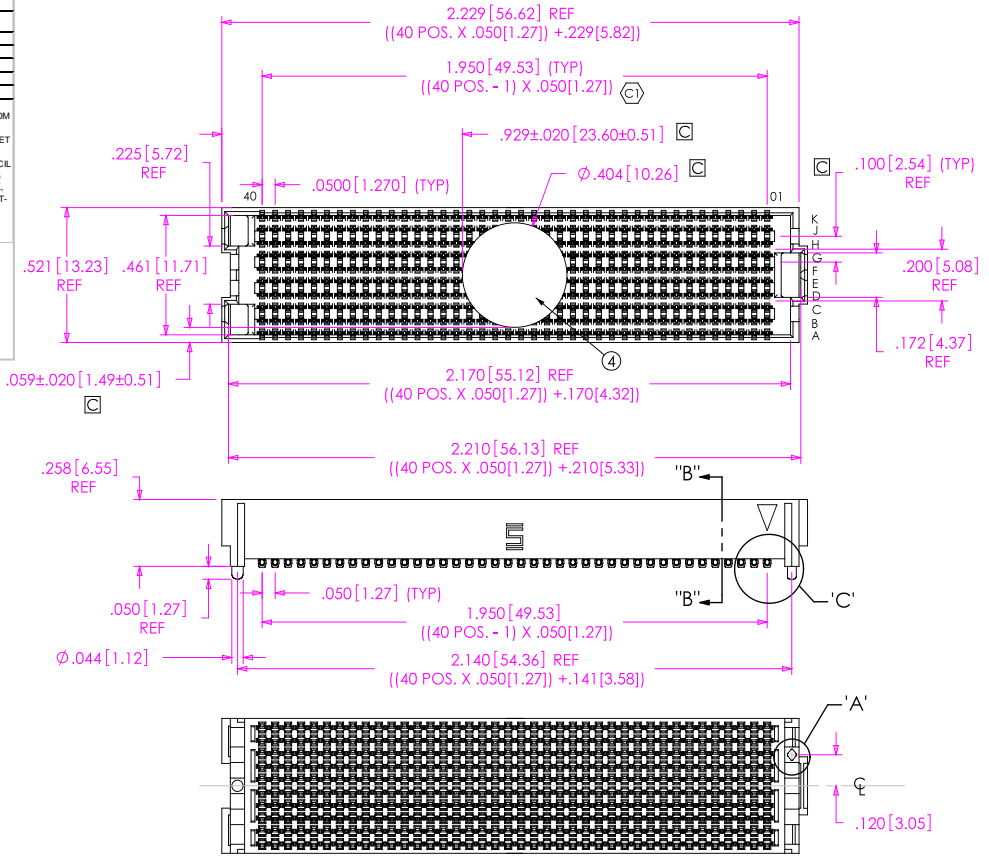
CUSTOMER SIGNATURE: _____

PRINTED NAME: _____

PHONE NO: _____

FAX NO: _____

ACCEPTANCE OF DRAWING
 ACCEPTED WITH DEVIATIONS LISTED



ITEM NO.	PART NUMBER	QUANTITY	MATERIAL
1	SEAF-40-06.5-10-A	1.0000	VECTRA 473i, COLOR: BLACK
2	C-209-06.5-S	400.00	BRUSH ALLOY 390 HT
3	SDT-645-012-02	400.00	SOLDER 95.5% TIN/3.8% SILVER 7% COPPER
4	K-DOT-404-500-005	1.0000	POLYIMIDE FILM
5	CT-SEAF028MS	1.0000	CONDUCTIVE POLYMER

UNLESS OTHERWISE SPECIFIED, DIMENSIONS ARE IN INCHES. TOLERANCES ARE:
 DECIMALS ANGLES
 .XX: ±.01 [3] 2°
 .XXX: ±.005 [13]
 .XXXX: ±.0020 [051]

PROPRIETARY NOTE
 THE DOCUMENT CONTAINS INFORMATION CONFIDENTIAL AND PROPRIETARY TO SAMTEC, INC. AND SHALL NOT BE REPRODUCED OR TRANSMITTED TO OTHER DOCUMENTS OR DISCLOSED TO OTHERS OR USED FOR ANY PURPOSE OTHER THAN THAT WHICH IT WAS OBTAINED WITHOUT THE EXPRESSED WRITTEN CONSENT OF SAMTEC, INC.

DO NOT SCALE DRAWING SHEET SCALE: 1:0.3333
 PLATING: CONTACT AREA: .000030 GOLD OVER .000050 NICKEL
 REMAINDER: .000200 REF TIN OVER .000050 NICKEL

F:\dwtg\sw\asp\134000\ASP-134486-01.LLDDRW

samtec

520 PARK EAST BLVD, NEW ALBANY, IN 47150
 PHONE: 812-944-6733 FAX: 812-945-5047
 e-Mail: info@SAMTEC.com code: 55322

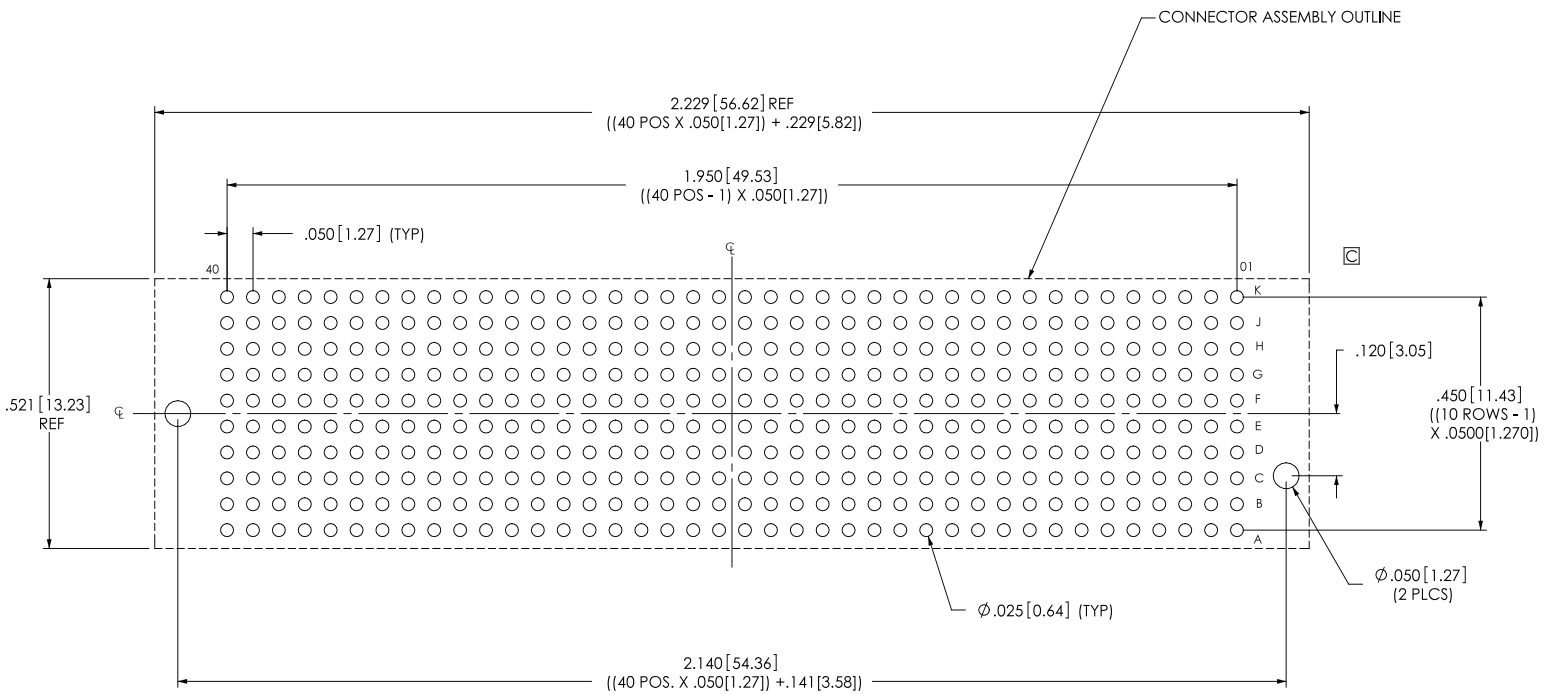
DESCRIPTION: .050 PITCH SOCKET ARRAY ASSEMBLY

DWG. NO. ASP-134486-01

BY: G. PURVIS 11/9/2007 SHEET 1 OF 4

REVISION C

RECOMMENDED PCB LAYOUT FOR ASP-134486-01



ALL DIMENSIONS ARE SYMMETRIC ABOUT THE CENTERLINE.

PROPRIETARY NOTE

THIS DOCUMENT CONTAINS INFORMATION CONFIDENTIAL AND PROPRIETARY TO SAMTEC, INC. AND SHALL NOT BE REPRODUCED OR TRANSFERRED TO OTHER DOCUMENTS OR DISCLOSED TO OTHERS OR USED FOR ANY PURPOSE OTHER THAN THAT WHICH IT WAS OBTAINED WITHOUT THE EXPRESSED WRITTEN CONSENT OF SAMTEC, INC.



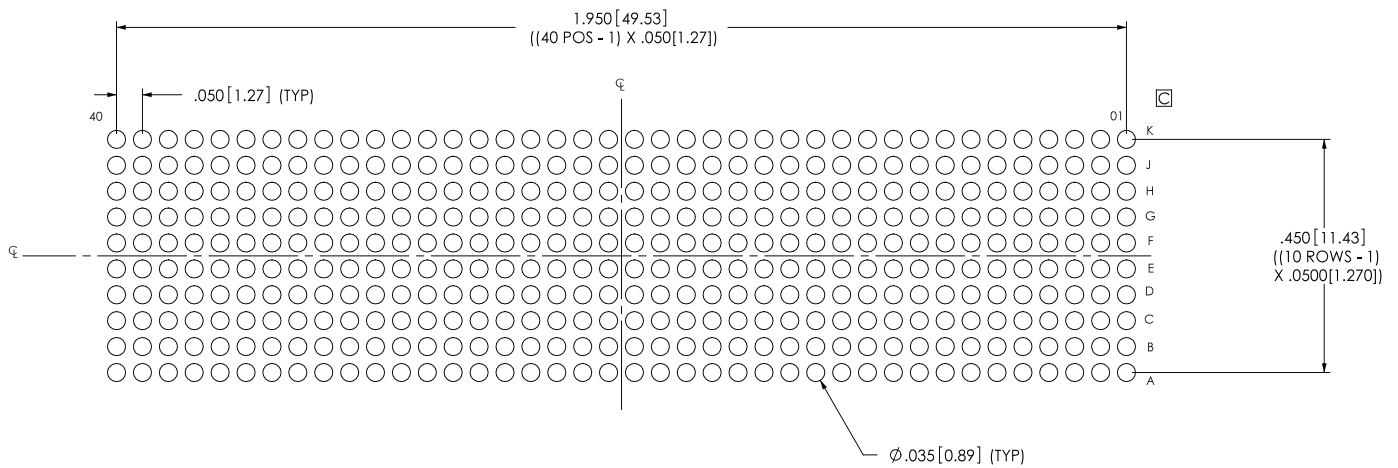
520 PARK EAST BLVD, NEW ALBANY, IN 47150
PHONE: 812-944-6733 FAX: 812-948-5047
e-Mail: info@SAMTEC.com code: 55322

F:\dwg\sw\asp\134000\ASP-134486-01.SLDDRW

REVISION C

RECOMMENDED STENCIL LAYOUT FOR ASP-134486-01

NOTE:
STENCIL TO BE .0060[.152] THICK.



ALL DIMENSIONS ARE SYMMETRIC ABOUT THE CENTERLINE.

PROPRIETARY NOTE

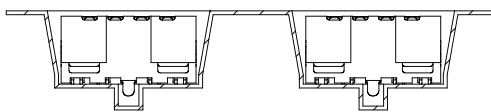
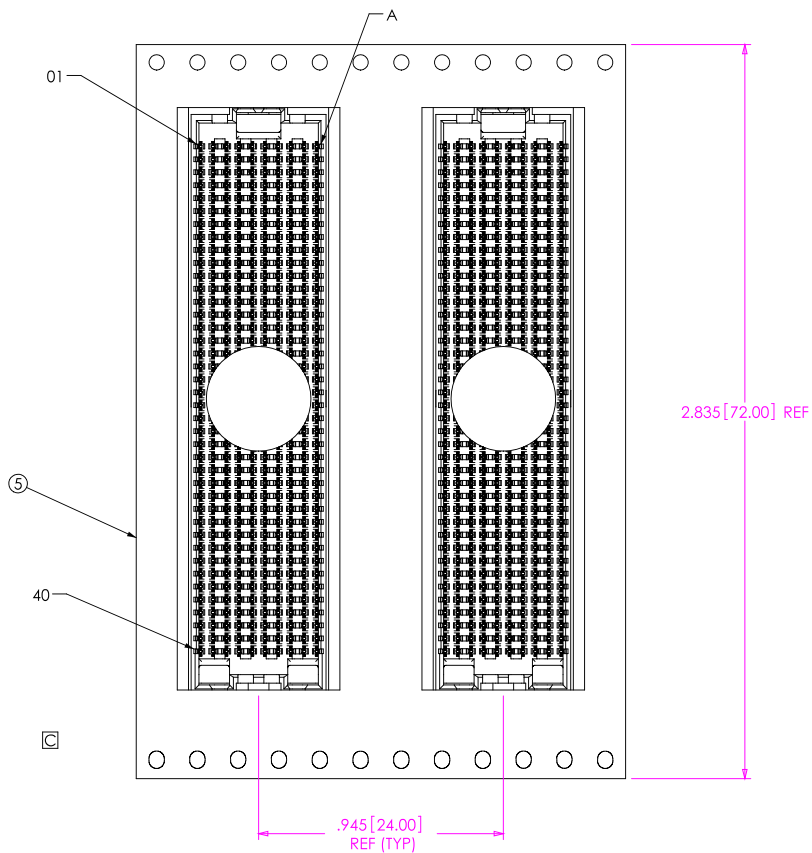
THIS DOCUMENT CONTAINS INFORMATION
CONFIDENTIAL AND PROPRIETARY TO
SAMTEC, INC. AND SHALL NOT BE REPRODUCED
OR TRANSFERRED TO OTHER DOCUMENTS OR
DISCLOSED TO OTHERS OR USED FOR ANY
PURPOSE OTHER THAN THAT WHICH IT WAS
OBTAINED WITHOUT THE EXPRESSED WRITTEN
CONSENT OF SAMTEC, INC.

samtec

520 PARK EAST BLVD, NEW ALBANY, IN 47150
PHONE: 812-944-6733 FAX: 812-948-5047
e-Mail: info@SAMTEC.com code: 55322

F:\dwg\sw\asp\134000\ASP-134486-01.SLDDRW

REVISION C



USER DIRECTION OF UNREELING →
POCKET NOT DETAILED

PACKAGING VIEW

F:\dwg\sw\asp\134000\ASP-134486-01.SLDDRW

PROPRIETARY NOTE
THE DOCUMENT CONTAINS INFORMATION
CONFIDENTIAL AND PROPRIETARY TO
SAMTEC, INC. AND SHALL NOT BE REPRODUCED
OR TRANSFERRED TO OTHER DOCUMENTS OR
DISCLOSED TO OTHERS OR USED FOR ANY
PURPOSE OTHER THAN THAT WHICH IT WAS
OBTAINED WITHOUT THE EXPRESSED WRITTEN
CONSENT OF SAMTEC, INC.

samtec

520 PARK EAST BLVD, NEW ALBANY, IN 47150
PHONE: 812-944-6733 FAX: 812-948-5047
e-Mail: info@SAMTEC.com code: 55322