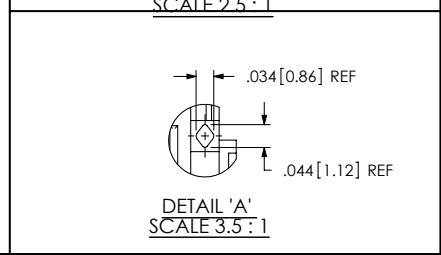
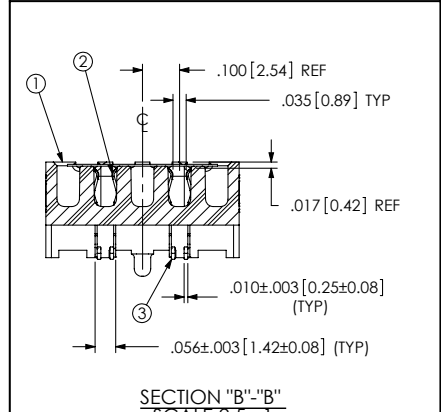
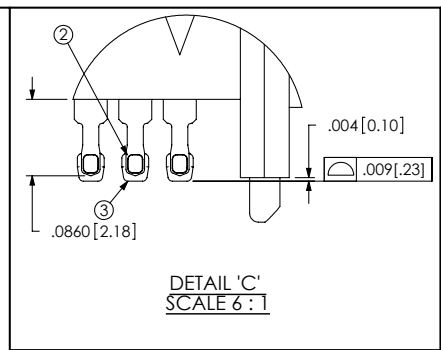
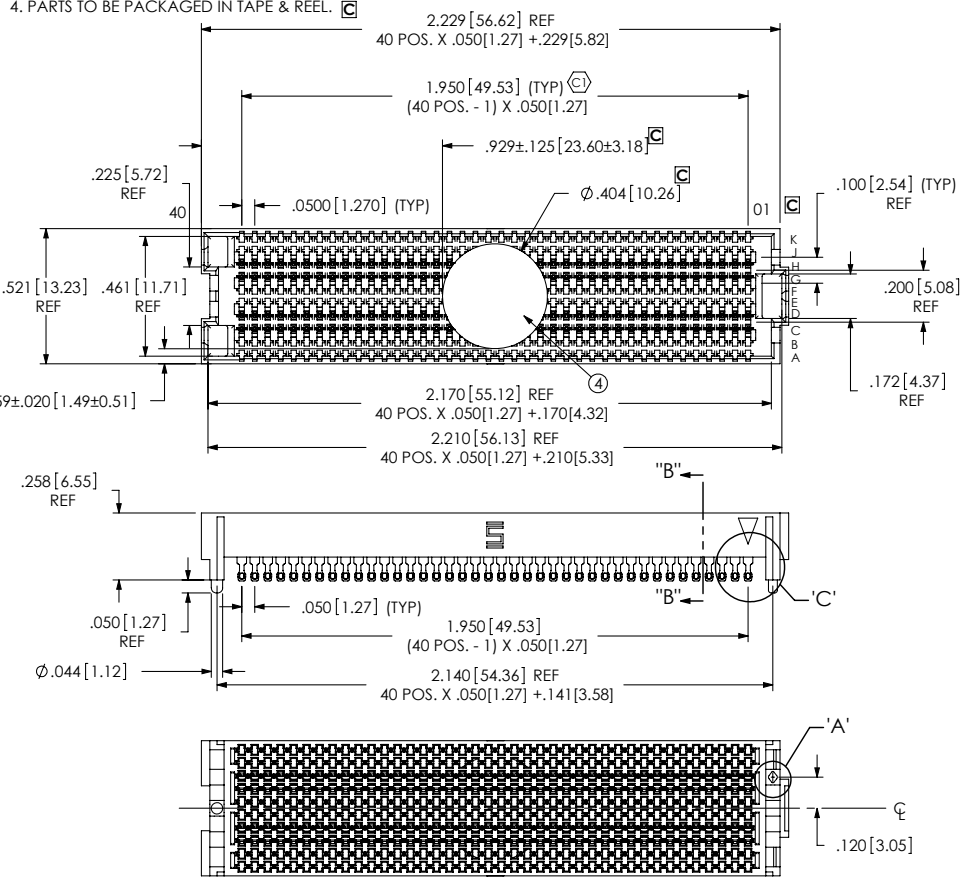


ASP-134603-01		
REVISION		
A	SS	R SKEES
10/31/2007 ECN-82531		
RELEASE FOR PRODUCTION		
B	TT	T SPINE
5/19/2008 ECN-91164		
DETAIL 'C': DELETE .0020, ADD .0860;		
BOM: CHG ITEM 3 FROM SOLDER (63% TIN/37% LEAD) TO SOLDER (95.5% TIN/3.8% /0.7% COPPER).		
C	TP	J HENRY
12/17/2008 ECN-102501		
NOTES: CHG NOTE 4 FROM FROM TRAY TO TAPE & REEL. UPDATE BOM FROM TRAY-SEAF019-40-6.5-10-AP TO CT-SEAF028MS ADD T&R VIEW SHEET 4. TOP VIEW SHEET 1. RECOMMENDED PCB LAYOUT SHEET 2 & RECOMMENDED STENCIL SHEET 3. ADD VITA SPEC PINOUTS TO THESE VIEWS. ROWS A THROUGH K, AND POSITIONS 01-40. ADD K-DOT-404-500-.005 TO BOM & ALL VIEWS		

- NOTES:
1. FILL ROWS 3, 4, 7, 8 ONLY, NOT AVAILABLE AS STANDARD.
2. Ⓢ REPRESENTS A CRITICAL DIMENSION.
3. MINIMUM PUSHOUT FORCE: .75 LB.
4. PARTS TO BE PACKAGED IN TAPE & REEL. Ⓢ

DATE:	_____
COMPANY:	_____
CUSTOMER SIGNATURE:	_____
PRINTED NAME:	_____
PHONE NO.:	_____
FAX NO.:	_____



ITEM NO.	PART NUMBER	QUANTITY	MATERIAL
1	SEAF-40-06.5-10-A	1.0000	VECTRA 473i, COLOR: BLACK
2	C-209-06.5-S	160.00	BRUSH ALLOY 390 HT
3	SDT-645-012-02	160.00	SOLDER (95.5% TIN/3.8% /0.7% COPPER)
4	K-DOT-.404-.500-.005	1.0000	POLYIMIDE FILM
5	CT-SEAF028MS	1.0000	CONDUCTIVE POLYMER

UNLESS OTHERWISE SPECIFIED, DIMENSIONS ARE IN INCHES. TOLERANCES ARE:
 DECIMALS .XX: ±0.1[.3]
 .XXX: ±0.05[.13]
 .XXXX: ±0.020[.051]
 ANGLES 2°
 DO NOT SCALE DRAWING SHEET SCALE: 3:1
 PLATING: CONTACT AREA: .000030 GOLD OVER .000050 NICKEL
 REMAINDER: .000200 REF TIN OVER .000050 NICKEL

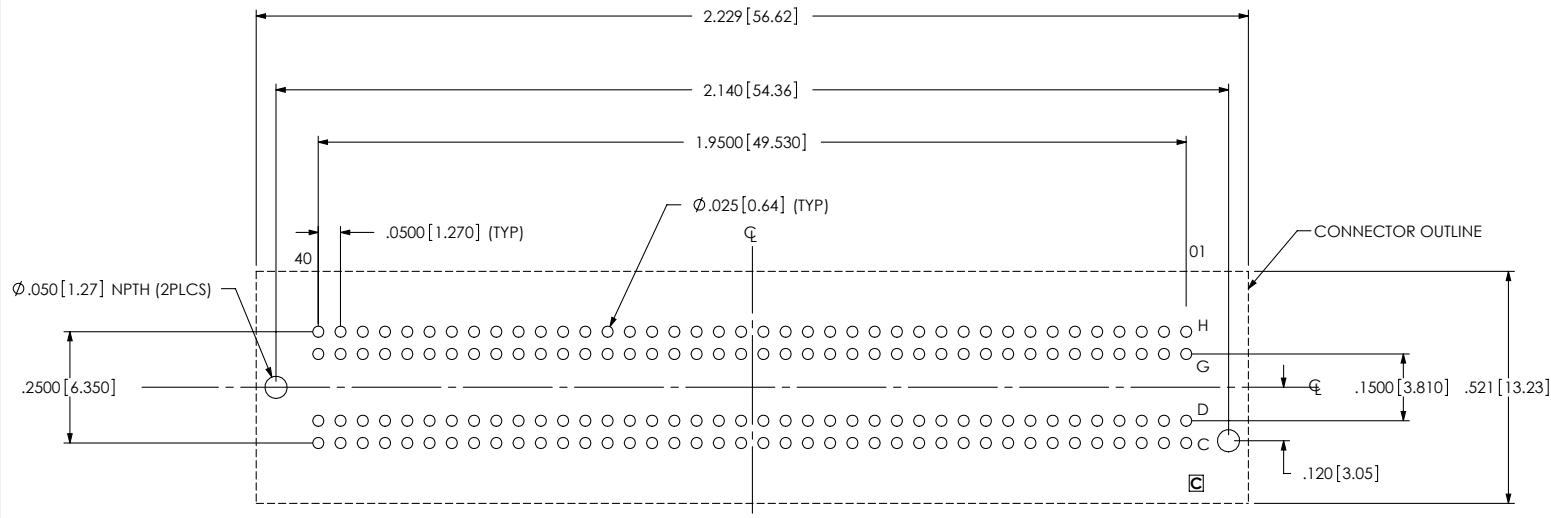
PROPRIETARY NOTE
 THIS DOCUMENT CONTAINS INFORMATION CONFIDENTIAL AND PROPRIETARY TO SAMTEC, INC. AND SHALL NOT BE REPRODUCED OR TRANSFERRED TO OTHER DOCUMENTS OR DISCLOSED TO OTHERS OR USED FOR ANY PURPOSE OTHER THAN THAT WHICH IT WAS OBTAINED WITHOUT THE EXPRESSED WRITTEN CONSENT OF SAMTEC, INC.

DESCRIPTION:
.050 PITCH SOCKET ARRAY ASSEMBLY
 DWG. NO. **ASP-134603-01**
 BY: S. SELLE 10/31/2007 SHEET 1 OF 4

samtec
 520 PARK EAST BLVD, NEW ALBANY, IN 47150
 PHONE: 812-944-6733 FAX: 812-948-5047
 e-Mail: info@SAMTEC.com code: 53322

ASP-134603-01
 REVISION C

RECOMMENDED PCB LAYOUT FOR ASP-134603-01



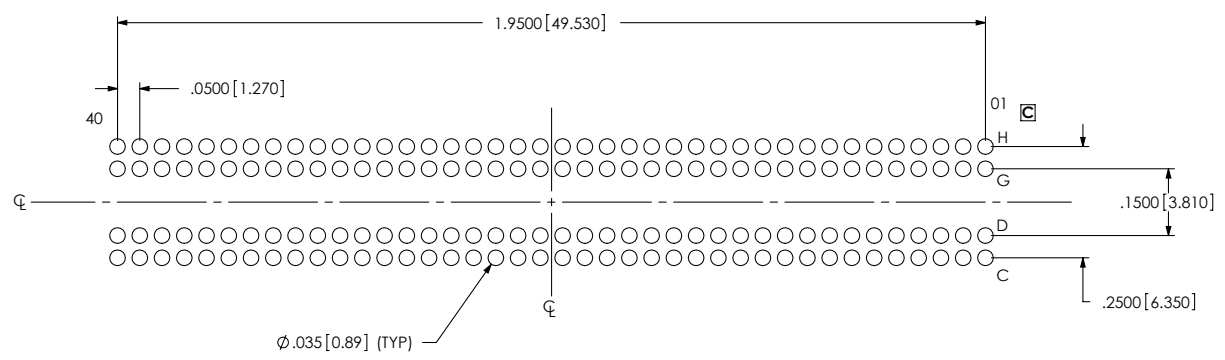
(ALL DIMENSIONS SYMMETRIC ABOUT THE CENTERLINE)

<p>PROPRIETARY NOTE THIS DOCUMENT CONTAINS INFORMATION CONFIDENTIAL AND PROPRIETARY TO SAMTEC, INC. AND SHALL NOT BE REPRODUCED OR TRANSFERRED TO OTHER DOCUMENTS OR DISCLOSED TO OTHERS OR USED FOR ANY PURPOSE OTHER THAN THAT WHICH IT WAS OBTAINED WITHOUT THE EXPRESSED WRITTEN CONSENT OF SAMTEC, INC.</p>	<p>samtec 520 PARK EAST BLVD, NEW ALBANY, IN 47150 PHONE: 812-944-6733 FAX: 812-948-5047 e-Mail: info@SAMTEC.com code: 55322</p>
<p>SHEET SCALE: 1:1</p>	<p>DESCRIPTION: .050 PITCH SOCKET ARRAY ASSEMBLY</p>
<p>F:\dwg\sw\asp\134000\ASP-134603-01.SLDDRW</p>	<p>DWG. NO. ASP-134603-01</p>
<p></p>	<p>BY: S. SELLE 10/31/2007 SHEET 2 OF 4</p>

ASP-134603-01
 REVISION C

RECOMMENDED STENCIL LAYOUT FOR ASP-134603-01

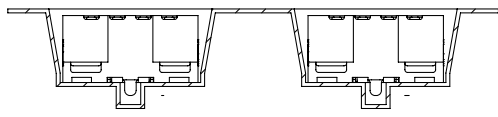
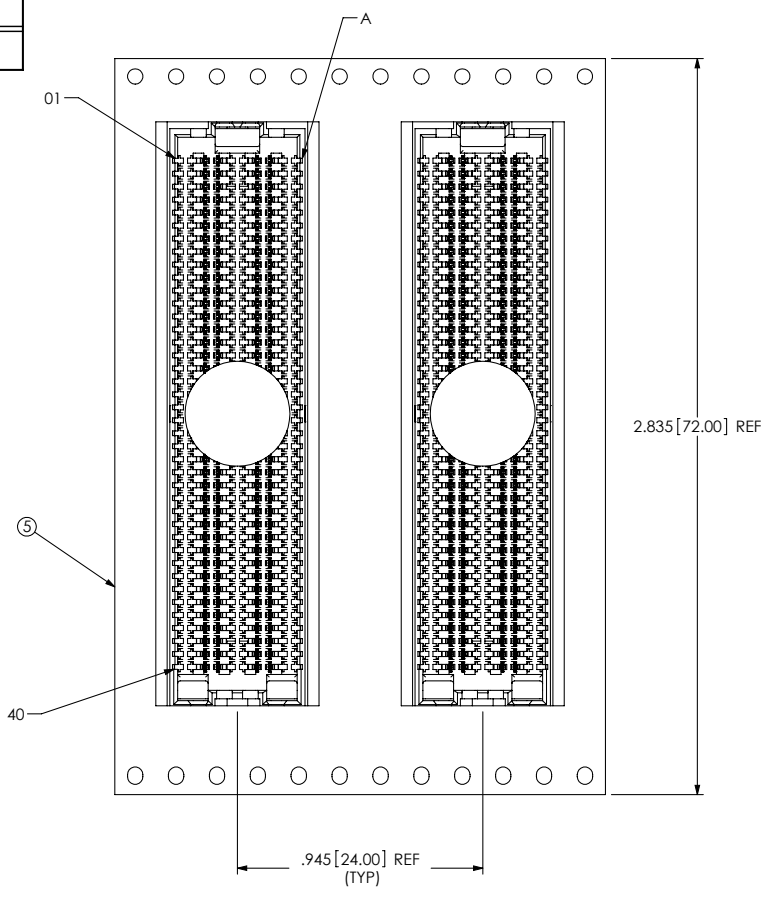
NOTE:
 STENCIL TO BE .006[.15] THICK



(ALL DIMENSIONS SYMMETRIC ABOUT THE CENTERLINE)

<p>PROPRIETARY NOTE THIS DOCUMENT CONTAINS INFORMATION CONFIDENTIAL AND PROPRIETARY TO SAMTEC, INC. AND SHALL NOT BE REPRODUCED OR TRANSFERRED TO OTHER DOCUMENTS OR DISCLOSED TO OTHERS OR USED FOR ANY PURPOSE OTHER THAN THAT WHICH IT WAS OBTAINED WITHOUT THE EXPRESSED WRITTEN CONSENT OF SAMTEC, INC.</p>	<p>samtec 520 PARK EAST BLVD, NEW ALBANY, IN 47150 PHONE: 812-944-6733 FAX: 812-948-5047 e-Mail: info@SAMTEC.com code: 55322</p>
<p>SHEET SCALE: 1:1</p>	<p>DESCRIPTION: .050 PITCH SOCKET ARRAY ASSEMBLY</p>
<p>F:\dwg\sw\asp\134000\ASP-134603-01.SLDDRW</p>	<p>DWG. NO. ASP-134603-01 BY: S. SELLE 10/31/2007 SHEET 3 OF 4</p>

ASP-134603-01
 REVISION C



USER DIRECTION OF UNREELING →
 POCKET NOT DETAILED

PACKAGING VIEW

Ⓢ

PROPRIETARY NOTE
 THIS DOCUMENT CONTAINS INFORMATION
 CONFIDENTIAL AND PROPRIETARY TO
 SAMTEC, INC. AND SHALL NOT BE REPRODUCED
 OR TRANSFERRED TO OTHER DOCUMENTS OR
 DISCLOSED TO OTHERS OR USED FOR ANY
 PURPOSE OTHER THAN THAT WHICH IT WAS
 OBTAINED WITHOUT THE EXPRESSED WRITTEN
 CONSENT OF SAMTEC, INC.

SHEET SCALE: 1:2

F:\dwg\sw\asp\134000\ASP-134603-01.SLDDRW



520 PARK EAST BLVD, NEW ALBANY, IN 47150
 PHONE: 812-944-6733 FAX: 812-948-5047
 e-Mail: info@SAMTEC.com code: 53322

DESCRIPTION:
 .050 PITCH SOCKET ARRAY ASSEMBLY

DWG. NO. ASP-134603-01

BY: S. SELLE 10/31/2007 SHEET 4 OF 4