

REVISION AZ

DO NOT SCALE FROM THIS PRINT

STYLE	"A"	"B"	BODY (LC)	BODY (-A)	GROUND PLANE	TERMINAL	MATED HEIGHT WITH QSH-01
-01	1680[4.267]	1600[4.064]	QTH-30-01-D-XX	QTH-30-01-D-XX-A	T-1G1-01-X	T-1S39-01-X	197[5.00] REF
-02	2861[7.267]	2781[7.064]	QTH-30-02-D-XX	QTH-30-02-D-XX-A	T-1G1-02-X	T-1S59-02-X	315[8.00] REF

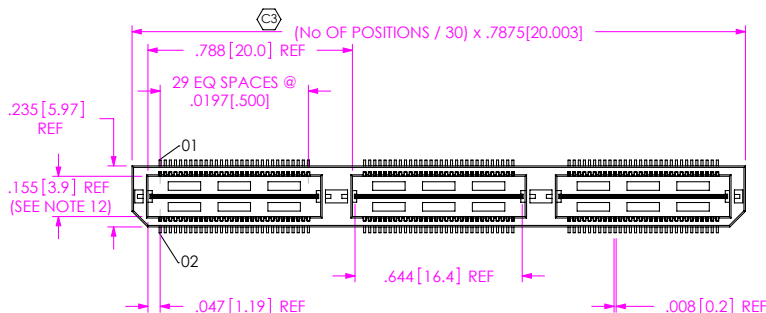
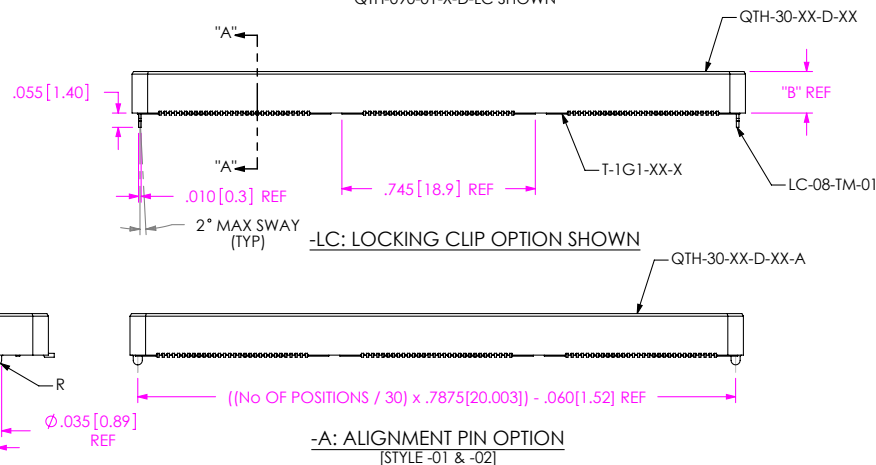


FIG. 1
QTH-090-01-X-D-LC SHOWN



-A: ALIGNMENT PIN OPTION
[STYLE -01 & -02]

QTH-XXX-XX-X-D-XXX

No OF POSITIONS

-030, -060, -090,
* -120, * -150
(PER ROW)
* (SEE NOTE 11)

LEAD STYLE

-01: .1680[4.267]
-02: .2861[7.264]
-03: .4043[10.269]
-04: .6011[15.246]
-05: .7181[18.240]
-06: .8361[21.237]
-07: .9542[24.237]
-08: 1.1511[29.238]
-09: .5224[13.269]
-10: .5618[14.269]
□ = SEE TABLE 4

PLATING SPECIFICATION

-F: FLASH SELECTIVE GOLD WITH MATTE TIN TAILS
(USE T-1SXX-XX-F & T-1GXX-XX-F)
(SEE NOTE 7)
-L: LIGHT SELECTIVE GOLD WITH MATTE TIN TAILS
(USE T-1SXX-XX-L & T-1GXX-XX-L)
-H: HEAVY GOLD WITH FLASH GOLD TAILS
(USE T-1SXX-XX-H & T-1GXX-XX-G)
-C: ELECTRO-POLISHED SELECTIVE
(USE T-1SXX-XX-C, T-1GXX-XX-L)

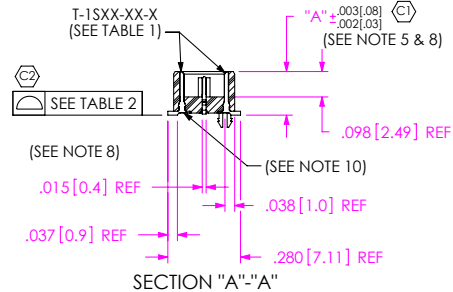
ROW SPECIFICATION

-D: DOUBLE (USE QTH-30-XX-D-XX
& QTHH-30-XX-D-XX)

OPTION

-LC: LOCKING CLIPS
(USE LC-08-TM-01)
-A: ALIGNMENT PINS
(USE QTH-30-XX-D-XX-A FOR -01 & -02)
(FOR -03 THRU -10 SEE TABLE 4)
-K: POLYIMIDE FILM (USE K-DOT-.276-.375-.005)
(AVAILABLE ON -01 THRU -04, -09 & -10 ONLY)
(SEE FIG. 2, SHEET 2)
-TR: TAPE & REEL (90 POS MAX)
(60 POS MAX W/ -GP OPTION)
(N/A ON -05 THRU -08)
-GP: GUIDE POSTS
(AVAILABLE ON -01 & -02 ONLY)
(USE QTH-30-XX-D-XX-X-GP)
(SEE FIG. 7, SHEET 4)
-FL: FRICTION LOCKS (SEE FIG. 8, SHEET 4)
(NOT AVAILABLE WITH -GP)
-RT1: RETENTION OPTION (SEE FIG. 9, SHEET 5)
(ONLY AVAILABLE ON -01 LEAD STYLE)
(MUST USE -A OPTION)
(USE QTH-30-01-D-XX-A-RT1 & T-1R36-01-F)
(NOT AVAILABLE WITH -LC, -GP, OR -FL)
**L: LATCHING OPTION (SEE FIG. 10, SHT. 6)
(ONLY AVAILABLE ON -01 LEAD STYLE)
(USE QTH-30-01-D-XX-L)
(NOT AVAILABLE WITH -LC, -GP, -FL, OR -RT1)

**NOT TOOLED



SECTION "A"- "A"

No OF POSITIONS	COPLANARITY (INCLUDING GP)
-030 THRU -060	.004 [.10]
-090 THRU -150	.006 [.15]

NOTES:

1. © REPRESENTS A CRITICAL DIMENSION.
2. MINIMUM PUSHOUT FORCE: 6 OZ FOR -01 & -02, 8 OZ FOR -03 THRU -10.
3. MINIMUM GROUND PLANE RETENTION: 1 LB.
4. PARTS TO BE MOLDED TO POSITION.
5. MAXIMUM VARIANCE OF .002 [0.05]. APPLIES TO SIGNAL OR GROUNDS INDEPENDENT OF THE GROUND OR SIGNAL PINS RESPECTIVELY.
6. LEAD STYLES -03 THRU -10: TOP BODY (QTH) CANNOT HAVE -A OPTION.
7. -L PLATING CAN BE SUBSTITUTED FOR -F PLATING.
8. GROUND PLANE PRESS HEIGHT MUST BE .003 [0.07] LESS THAN THE MAXIMUM HEIGHT OR .002 [0.03] GREATER THAN THE MINIMUM HEIGHT OF SIGNAL PIN.
9. T-1R36 RETENTION TO BODY TO BE 1.0 LBF.
10. CUT OFF BURR NOT TO EXCEED .003 [0.07] IN ANY DIRECTION, BURR PLUS TAB HEIGHT NOT TO EXCEED .006 [0.15].
11. FOR NEW APPLICATIONS REQUIRING THESE POSITIONS, PLEASE CONTACT SAMTEC INTERCONNECT PROCESSING GROUP.
12. MINIMUM ROW TO ROW IS .152, PIN CAN EXTEND PAST WALL .003 MAX.

UNLESS OTHERWISE SPECIFIED,
DIMENSIONS ARE IN INCHES.
TOLERANCES ARE:
DECIMALS ANGLES
.XX: ±01[.3]
.XXX: ±005[.13]
.XXXX: ±0020[.051]

PROPRIETARY NOTE
THIS DOCUMENT CONTAINS INFORMATION
CONFIDENTIAL AND PROPRIETARY TO
SAMTEC, INC. AND SHALL NOT BE REPRODUCED
OR TRANSFERRED TO OTHER DOCUMENTS OR
DISCLOSED TO OTHERS OR USED FOR ANY
PURPOSE OTHER THAN THAT WHICH IT WAS
OBTAINED WITHOUT THE EXPRESSED WRITTEN
CONSENT OF SAMTEC, INC.

samtec
520 PARK EAST BLVD, NEW ALBANY, IN 47150
PHONE: 812-944-6733 FAX: 812-948-5047
e-Mail info@SAMTEC.com code 55322

MATERIAL: DO NOT SCALE DRAWING SHEET SCALE: 1:0.5714
INSULATOR: LCP, COLOR: BLACK, FLAMMABILITY RATING: UL94V0
TERMINAL & GROUND PLANE: PHOS BRONZE

DESCRIPTION:
.5mm DOUBLE ROW HS TERMINAL ASSEMBLY
DWG. NO. QTH-XXX-XX-X-D-XXX

F:\DWG\MSC\VMKTG\QTH-XXX-XX-X-D-XXX-MKT.SLDDRW

BY: DEAN P 09-14-2010 SHEET 1 OF 6

REVISION AZ

NOTE: "R" = (No OF POSITIONS / 30) x .7875[20.003]
 WITH -RT1 OPTION: "R" = ((No OF POSITIONS / 30) x .7875[20.003] + .6505[16.522] REF
 WITH -GP OPTION: "R" = ((No OF POSITIONS / 30) x .7875[20.003] + .5175[13.145] REF
 "S" = ((("R" - .276[7.01]) / 2) ± .020[.51])

TABLE 3	
STYLE	"T"
-01	.173[4.39]
-02	.291[7.39]
-03	.409[10.39]
-04	.605[15.37]
-09	.527[13.39]
-10	.566[14.39]

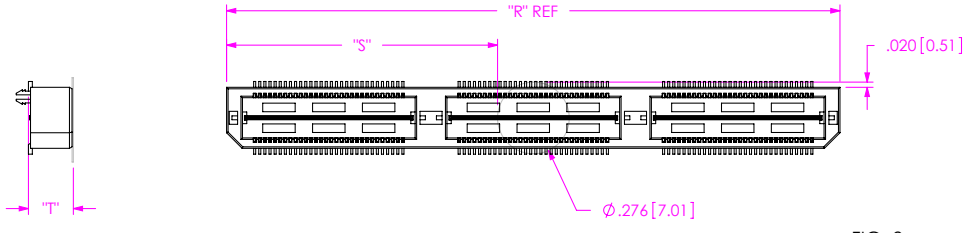


FIG. 2
 -K: POLYIMIDE FILM PAD OPTION
 [USE K-DOT-.276-.375-.005]

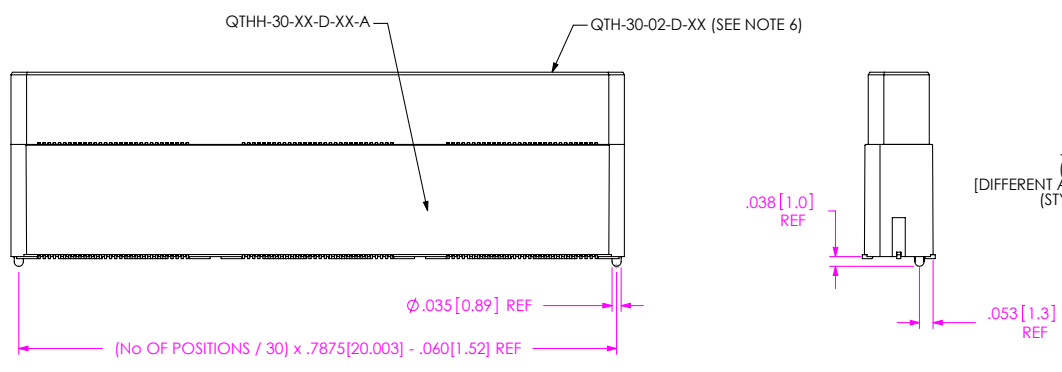


FIG. 3
 -A: ALIGNMENT PIN OPTION
 (QTH-090-05-X-D-A SHOWN)
 [DIFFERENT AS SHOWN, OTHERWISE SAME AS FIG. 1]
 (STYLES -03 THRU -09, SEE TABLE 4)

PROPRIETARY NOTE
 THIS DOCUMENT CONTAINS INFORMATION
 CONFIDENTIAL AND PROPRIETARY TO
 SAMTEC, INC. AND SHALL NOT BE REPRODUCED
 OR TRANSFERRED TO OTHER DOCUMENTS OR
 DISCLOSED TO OTHERS OR USED FOR ANY
 PURPOSE OTHER THAN THAT WHICH IT WAS
 OBTAINED WITHOUT THE EXPRESSED WRITTEN
 CONSENT OF SAMTEC, INC.

DO NOT SCALE DRAWING

SHEET SCALE: 1.75:1



DESCRIPTION: .5mm DOUBLE ROW HS TERMINAL ASSEMBLY

DWG. NO. QTH-XXX-XX-X-D-XXX

BY: DEAN P 09-14-2010 SHEET 2 OF 6

F:\DWG\MISC\MKTG\QTH-XXX-XX-X-D-XXX-MKT.SLDDRW

REVISION AZ

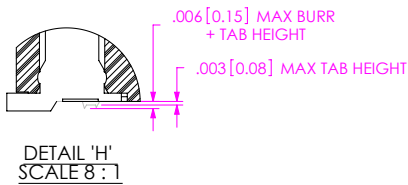
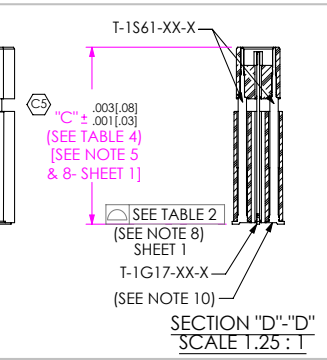
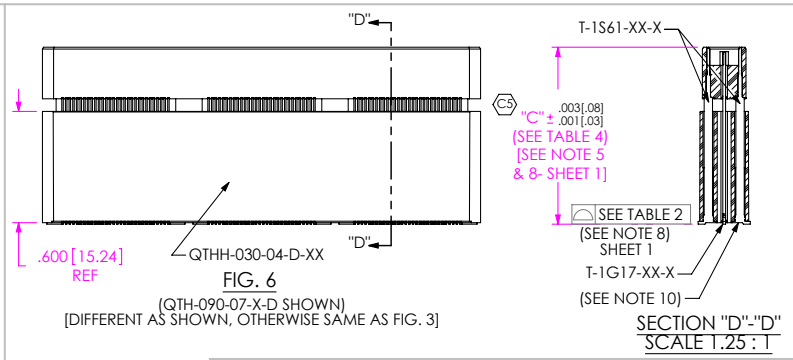
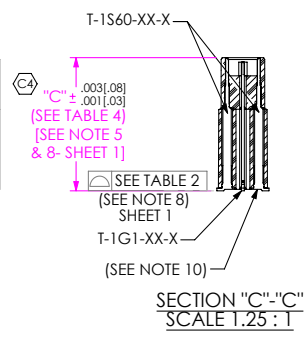
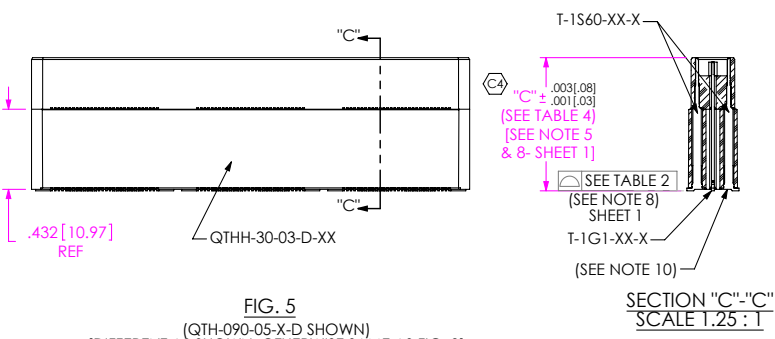
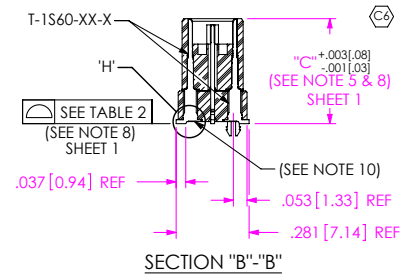
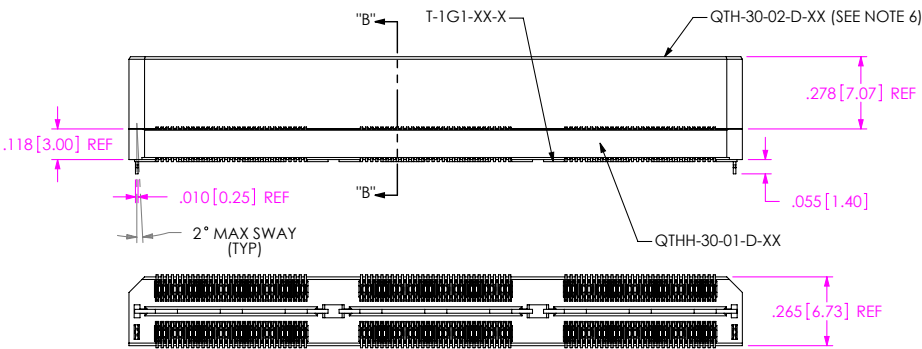


TABLE 4							
STYLE	SEE FIGURE	"C" OVERALL HEIGHT	GROUND PLANE	TERMINAL	TOP BODY (SEE NOTE 6)	BOTTOM SPACER BODY (-LC OR NONE)	BOTTOM SPACER BODY (-A)
-03	4	.4043 [10.269]	T-1G1-03-X	T-1S60-03-X	QTH-30-02-D-XX	QTHH-30-01-D-XX	QTHH-30-01-D-XX-A
-04	4	.6001 [15.246]	T-1G1-04-X	T-1S60-04-X	QTH-30-02-D-XX	QTHH-30-01-D-XX	QTHH-30-01-D-XX-A
-05	5	.7181 [18.240]	T-1G1-05-X	T-1S60-05-X	QTH-30-02-D-XX	QTHH-30-03-D-XX	QTHH-30-03-D-XX-A
-06	5	.8361 [21.237]	T-1G1-06-X	T-1S60-06-X	QTH-30-02-D-XX	QTHH-30-03-D-XX	QTHH-30-03-D-XX-A
-07	6	.9542 [24.237]	T-1G17-01-X	T-1S61-21-X	QTH-30-02-D-XX	QTHH-30-04-D-XX	QTHH-30-04-D-XX-A
-08	6	1.1511 [29.238]	T-1G17-02-X	T-1S61-22-X	QTH-30-02-D-XX	QTHH-30-04-D-XX	QTHH-30-04-D-XX-A
-09	4	.5224 [13.269]	T-1G1-09-X	T-1S60-09-X	QTH-30-02-D-XX	QTHH-30-01-D-XX	QTHH-30-01-D-XX-A
-10	4	.5618 [14.269]	T-1G1-10-X	T-1S60-10-X	QTH-30-02-D-XX	QTHH-30-01-D-XX	QTHH-30-01-D-XX-A



PROPRIETARY NOTE
THIS DOCUMENT CONTAINS INFORMATION CONFIDENTIAL AND PROPRIETARY TO SAMTEC, INC. AND SHALL NOT BE REPRODUCED OR TRANSFERRED TO OTHER DOCUMENTS OR DISCLOSED TO OTHERS OR USED FOR ANY PURPOSE OTHER THAN THAT WHICH IT WAS OBTAINED WITHOUT THE EXPRESSED WRITTEN CONSENT OF SAMTEC, INC.

DO NOT SCALE DRAWING

SHEET SCALE: 1:0.571429

samtec
520 PARK EAST BLVD, NEW ALBANY, IN 47150
PHONE: 812-944-6733 FAX: 812-948-5047
e-Mail: info@SAMTEC.com code: 55322

DESCRIPTION:
.5mm DOUBLE ROW HS TERMINAL ASSEMBLY

DWG. NO.
QTH-XXX-XX-X-D-XXX

BY: DEAN P 09-14-2010 SHEET 3 OF 6

F:\DWG\MISC\MKTG\QTH-XXX-XX-X-D-XXX-MKT.SLDDRW

REVISION AZ

FIG. 7
 (QTH-090-01-X-D-GP SHOWN)
 [DIFFERENT AS SHOWN, OTHERWISE SAME AS FIG. 1]
 (AVAILABLE ON -01 & -02 ONLY)

TABLE 5		
STYLE	"D"	BODY
-01	.363[9.22]	QTH-30-01-D-XX-X-GP
-02	.481[12.22]	QTH-30-02-D-XX-X-GP

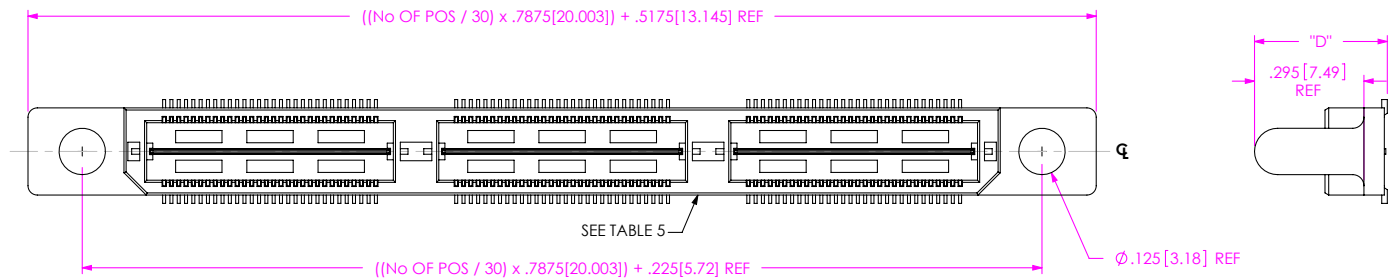
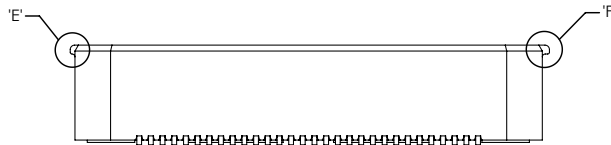
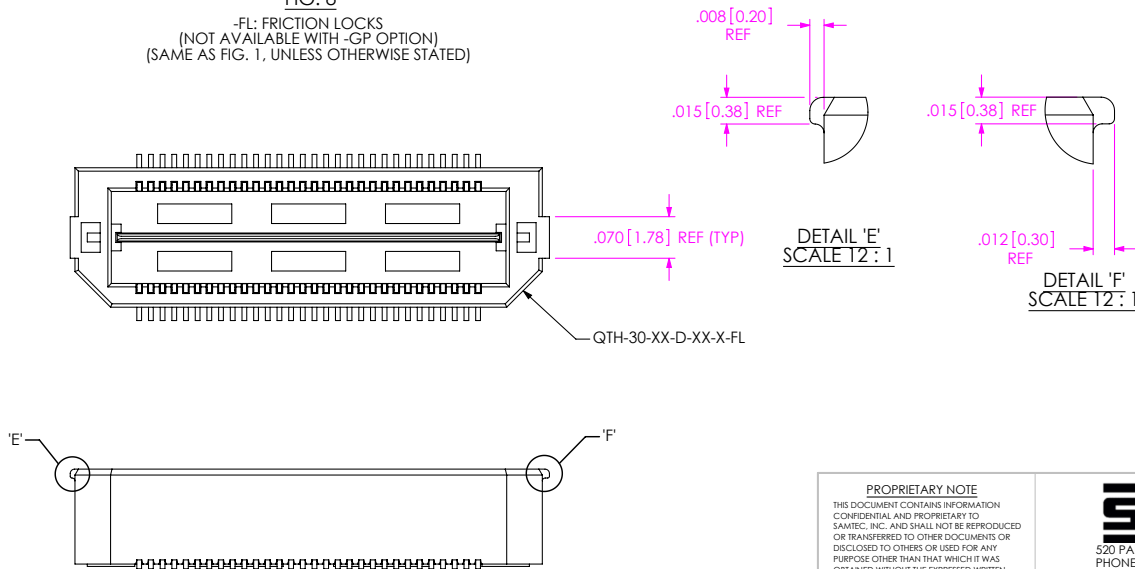


FIG. 8
 -FL: FRICTION LOCKS
 (NOT AVAILABLE WITH -GP OPTION)
 (SAME AS FIG. 1, UNLESS OTHERWISE STATED)



F:\DWG\MISC\MKTG\QTH-XXX-XX-X-D-XXX-MKT.SLDDRW

PROPRIETARY NOTE
 THIS DOCUMENT CONTAINS INFORMATION
 CONFIDENTIAL AND PROPRIETARY TO
 SAMTEC, INC. AND SHALL NOT BE REPRODUCED
 OR TRANSFERRED TO OTHER DOCUMENTS OR
 DISCLOSED TO OTHERS OR USED FOR ANY
 PURPOSE OTHER THAN THAT WHICH IT WAS
 OBTAINED WITHOUT THE EXPRESSED WRITTEN
 CONSENT OF SAMTEC, INC.

DO NOT SCALE DRAWING

SHEET SCALE: 2.5:1

samtec

520 PARK EAST BLVD, NEW ALBANY, IN 47150
 PHONE: 812-944-6733 FAX: 812-948-5047
 e-Mail: info@SAMTEC.com code: 55322

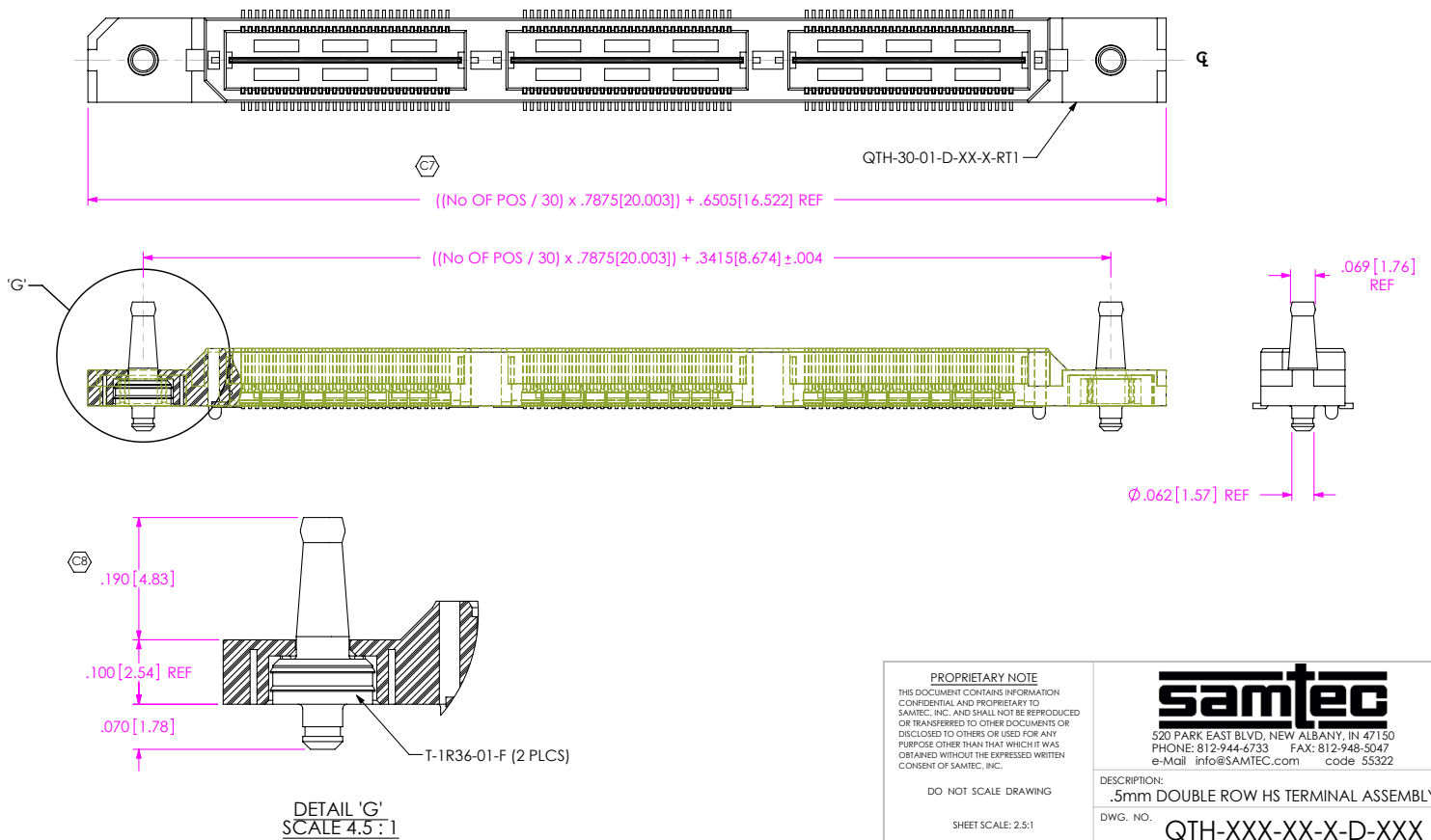
DESCRIPTION:
 .5mm DOUBLE ROW HS TERMINAL ASSEMBLY

DWG. NO. QTH-XXX-XX-X-D-XXX

BY: DEAN P 09-14-2010 SHEET 4 OF 6

REVISION AZ

FIG. 9
 (QTH-090-01-X-D-A-RT1 SHOWN)
 [NOT AVAILABLE WITH -LC, -GP, OR -FL OPTIONS]
 [AVAILABLE ON -01 ONLY]



PROPRIETARY NOTE
 THIS DOCUMENT CONTAINS INFORMATION
 CONFIDENTIAL AND PROPRIETARY TO
 SAMTEC, INC. AND SHALL NOT BE REPRODUCED
 OR TRANSFERRED TO OTHER DOCUMENTS OR
 DISCLOSED TO OTHERS OR USED FOR ANY
 PURPOSE OTHER THAN THAT WHICH IT WAS
 OBTAINED WITHOUT THE EXPRESSED WRITTEN
 CONSENT OF SAMTEC, INC.

DO NOT SCALE DRAWING

SHEET SCALE: 2.5:1

samtec

520 PARK EAST BLVD, NEW ALBANY, IN 47150
 PHONE: 812-944-6733 FAX: 812-948-5047
 e-Mail info@SAMTEC.com code: 55322

DESCRIPTION:
 .5mm DOUBLE ROW HS TERMINAL ASSEMBLY

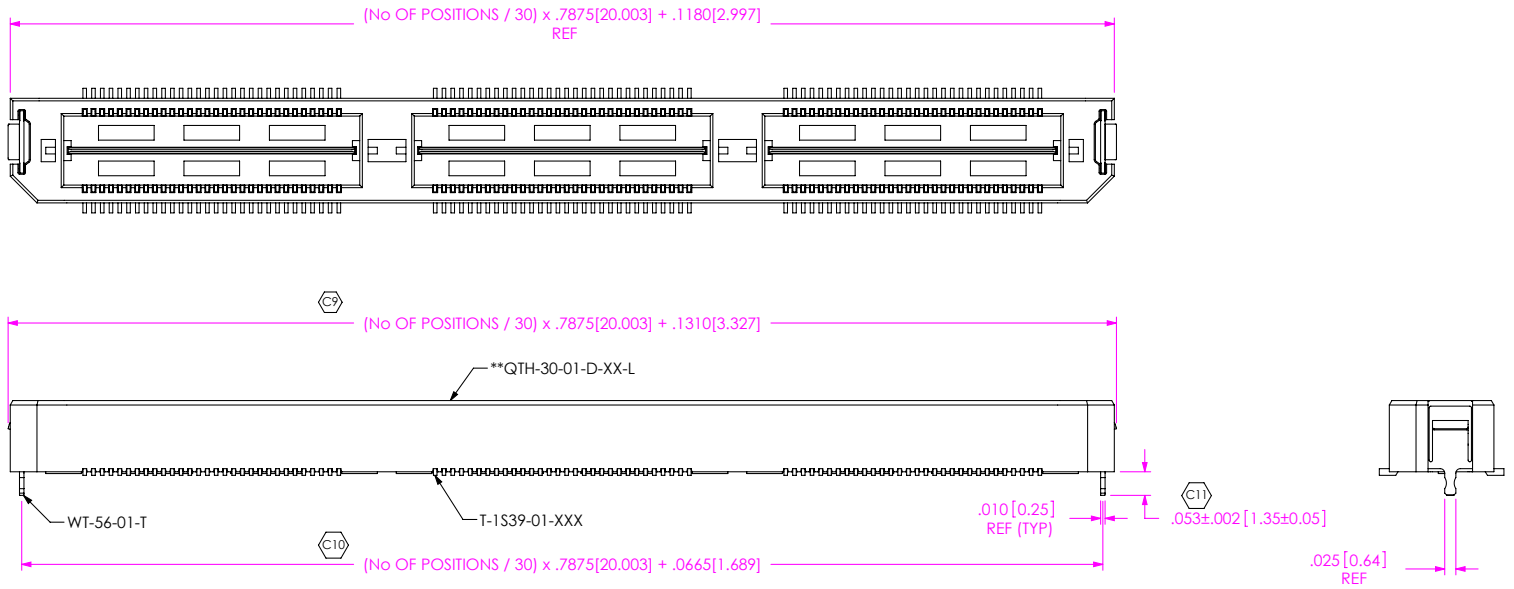
DWG. NO. QTH-XXX-XX-X-D-XXX

BY: DEAN P 09-14-2010 SHEET 5 OF 6

F:\DWG\MISC\MKTG\QTH-XXX-XX-X-D-XXX-MKT.SLDDRW

REVISION AZ

FIG. 10
 **L: LATCHING OPTION
 (QTH-090-01-X-D-L SHOWN)
 (AVAILABLE ON -01 LEAD STYLE ONLY)
 (NOT AVAILABLE WITH -LC, -GP, -FL, OR -RT1 OPTIONS)
 (SAME AS FIG. 1 UNLESS OTHERWISE STATED)
 **NOT TOOLED



PROPRIETARY NOTE
 THIS DOCUMENT CONTAINS INFORMATION
 CONFIDENTIAL AND PROPRIETARY TO
 SAMTEC, INC. AND SHALL NOT BE REPRODUCED
 OR TRANSFERRED TO OTHER DOCUMENTS OR
 DISCLOSED TO OTHERS OR USED FOR ANY
 PURPOSE OTHER THAN THAT WHICH IT WAS
 OBTAINED WITHOUT THE EXPRESSED WRITTEN
 CONSENT OF SAMTEC, INC.

DO NOT SCALE DRAWING

SHEET SCALE: 2:1

samtec
 520 PARK EAST BLVD, NEW ALBANY, IN 47150
 PHONE: 812-944-6733 FAX: 812-948-5047
 e-Mail: info@SAMTEC.com code 55322

DESCRIPTION:
 .5mm DOUBLE ROW HS TERMINAL ASSEMBLY

DWG. NO.
 QTH-XXX-XX-X-D-XXX

BY: DEAN P 09-14-2010 SHEET 6 OF 6

F:\DWG\MISC\MKTG\QTH-XXX-XX-X-D-XXX-MKT.SLDDRW