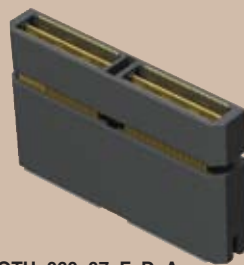


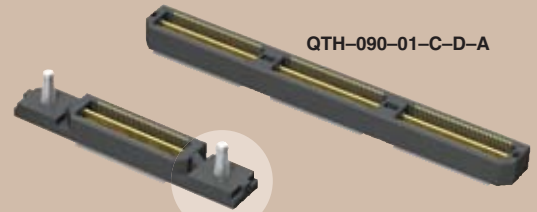


(0,50mm) .0197"

QTH SERIES



QTH-060-07-F-D-A



QTH-090-01-C-D-A

QTH-030-01-L-D-A-RT1

# HIGH SPEED GROUND PLANE HEADER

## SPECIFICATIONS

For complete specifications and recommended PCB layouts see [www.samtec.com?QTH](http://www.samtec.com?QTH)

**Insulator Material:**

Liquid Crystal Polymer



**Terminal Material:**

Phosphor Bronze



**Plating:**

Au or Sn over 50µ" (1,27µm) Ni

**Current Rating:**

Contact: 1.0A @ 30°C

**Temperature Rise**

Ground Plane: 7.8A @ 30°C

**Operating Temp Range:**

-55°C to +125°C

**Voltage Rating:**

125 VAC (5mm Stack Height)

**Max Cycles:**

100

**Unmating Force (-RT1 option):**

-RT1 option increases unmating force up to 50%

**RoHS Compliant:**

Yes

**Processing:**

Lead-Free Solderable:

Yes

**SMT Lead Coplanarity:**

(0,10mm) .004" max (030-060)

(0,15mm) .006" max (090-120)

**Board Stacking:**

For applications requiring more than two connectors per board or 4 banks or more, contact [ipg@samtec.com](mailto:ipg@samtec.com)

## APPLICATION SPECIFIC OPTION

- 14mm, 15mm, 22mm and 30mm stack height (Caution: Some automatic placement/inspection machines may have component height restrictions. Please consult machinery specifications.)
  - 30µ" (0,76µm) Gold (Specify -H plating for Data Rate cable mating applications.)
  - Edge Mount & Guide Posts
  - 150 positions per row
- Call Samtec.

\*Note: -C Plating passes 10 year MFG testing

Note: Some lengths, styles and options are non-standard, non-returnable.

**Board Mates:**  
QSH

**Cable Mates:**  
HFHM2, HQCD, HQDP  
(See Application Specific note)

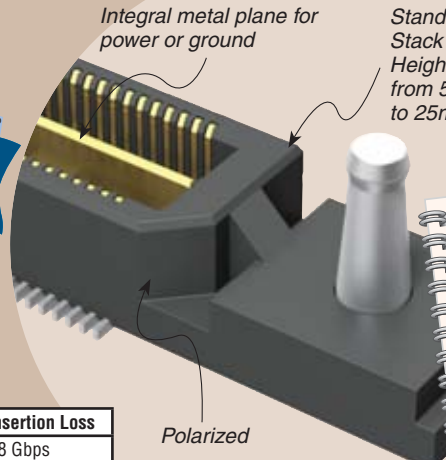


5mm Stack Height	Type	Rated @ 3dB Insertion Loss
Single-Ended Signaling	-D	9 GHz / 18 Gbps
Differential Pair Signaling	-D	8 GHz / 16 Gbps
Differential Pair Signaling	-DP	9.5 GHz / 19 Gbps

Performance data for other stack heights and complete test data available at [www.samtec.com?QTH](http://www.samtec.com?QTH) or contact [sig@samtec.com](mailto:sig@samtec.com)

Integral metal plane for power or ground

Standard Stack Heights from 5mm to 25mm



Polarized

Protocols Supported

- Hypertransport™
- XAUI
- PCI Express®
- SATA
- Infiniband

Download app notes at [www.samtec.com/appnote](http://www.samtec.com/appnote)  
Contact SIG @ [samtec.com](mailto:samtec.com) for questions on protocols

## ALSO AVAILABLE

Board Spacing Standoffs. See SO Series.

QTH	PINS PER ROW NO. OF PAIRS	LEAD STYLE	PLATING OPTION	TYPE	A	OTHER OPTION
		Specify LEAD STYLE from chart				
	-030, -060, -090, -120 (60 total pins per bank = -D)		-F = Gold Flash on Signal Pins and Ground Plane, Matte Tin on tails	-D = Single-Ended		-K = (7,00mm) .275" DIA Polyimide film Pick & Place Pad (N/A with -05 & -07 lead style)
	-020, -040, -060, -080 (20 pairs per bank = -D-DP)		-L = 10µ" (0,25µm) Gold on Signal Pins and Ground Plane, Matte Tin on tails	-D-DP = Differential Pair (-01 only)		-TR = Tape & Reel (-090 positions maximum)
			-C* = Electro-Polished Selective 50µ" (1,27µm) min Au over 150µ" (3,81µm) Ni on Signal Pins in contact area, 10µ" (0,25µm) min Au over 50µ" (1,27µm) Ni on Ground Plane in contact area, Matte Tin over 50µ" (1,27µm) min Ni on all solder tails			-RT1 = Retention Option (-01 lead style only & -090 positions maximum)
						-L = Latching Option (-01 lead style only) (N/A with -RT1 option)

QTH LEAD STYLE	A	HEIGHT WITH QSH*
-01	(4,27) .168	(5,00) .197
-02	(7,26) .286	(8,00) .315
-03	(10,27) .404	(11,00) .433
-04	(15,25) .600	(16,00) .630
-05	(18,26) .718	(19,00) .748
-07	(24,24) .954	(25,00) .984

\*Processing conditions will affect mated height.

Due to technical progress, all designs, specifications and components are subject to change without notice.

WWW.SAMTEC.COM

SAMTEC USA • Tel: 1-800-SAMTEC-9 or 812-944-6733 SAMTEC SILICON VALLEY • Tel: 408-395-5900 SAMTEC SOUTHERN CALIFORNIA • Tel: 1-800-726-8329  
 SAMTEC AMERICA LATINA COMERCIO EXTERIOR LTDA • Tel: (+55 31) 3786 3227 SAMTEC UNITED KINGDOM • Tel: 44 01236 739292 SAMTEC GERMANY • Tel: +49 (0) 89 / 89460-0  
 SAMTEC FRANCE • Tel: 33 01 60 95 06 60 SAMTEC ITALY • Tel: 39 039 8890337 SAMTEC NORDIC/BALTIC • Tel: +46-84477280 SAMTEC BENELUX • Tel: 44 01236 739292 SAMTEC ISRAEL • Tel: 972-3-7526600  
 SAMTEC INDIA • Tel: +91-80-3272 1612 SAMTEC ASIA PACIFIC • Tel: 65 6745-5955 SAMTEC JAPAN • Tel: 045-475-1385 SAMTEC CHINA • Tel: 86-21-61103766 SAMTEC TAIWAN • Tel: 886-2-2735-6109  
 Downloaded from Elcodis.com electro SAMTEC HONG KONG • Tel: 852-2600-9858 SAMTEC KOREA • Tel: 82-31-717-5685 SAMTEC ANZ • Tel: 613 9512 7747 SAMTEC SOUTH AFRICA • Tel: 27 11 452 8112