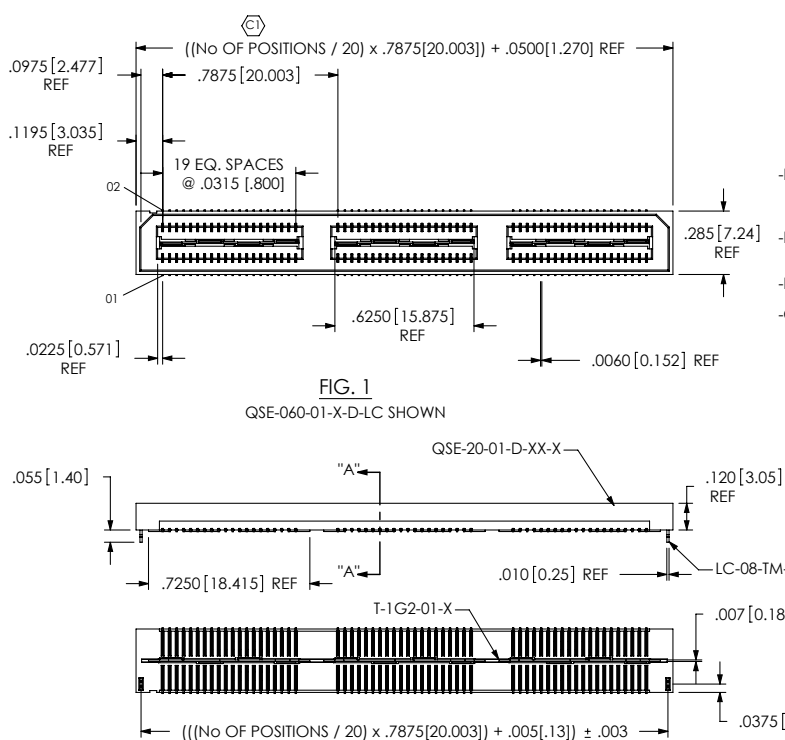


REVISION AQ

DO NOT SCALE FROM THIS PRINT



QSE-XXX-01-X-D-XXX

- No OF POSITIONS: -020, -040, -060
* -080, *-100 (PER ROW)
- LEAD STYLE: -01 .1280[3.251]
- PLATING SPECIFICATION: -F: FLASH SELECTIVE GOLD WITH MATTE TIN TAILS (USE C-126-21-F, T-1G2-XX-F) (SEE NOTE 8 & 13); -L: LIGHT SELECTIVE GOLD WITH MATTE TIN TAILS (SEE NOTE 11 & 13) (USE C-126-21-L, T-1G2-XX-L) (USE C-126-21-H, T-1G2-XX-G); -C: ELECTRO-POLISHED SELECTIVE (SEE NOTE 11 & 13) (USE C-126-21-C, T-1G2-XX-L)
- OPTION: -A: ALIGNMENT PINS (USE QSE-20-XX-D-XX-A) NA WITH -LC OPTION; -LC: LOCKING CLIPS (SEE NOTE 14) (USE LC-08-TM-01,) NA WITH -A OPTION; -GP: GUIDE POSTS (SEE FIG. 3) (USE QSE-20-01-D-XX-X-GP) (T & R PACKAGING: 40 POS. MAX.); -K: POLYIMIDE FILM (USE K-DOT-325-450-005, SEE FIG. 2); -TR: TAPE & REEL (60 POS. MAX) (40 POS MAX -GP OPTION); -FL: FRICTION LOCKS (SEE FIG. 4, SHEET 2) (NOT AVAILABLE WITH -GP); -RT1: RETENTION OPTION (MUST USE -A OPTION) (USE QSE-20-01-D-XX-A-RT1 & SUB-SC-05-01-FF) (SEE FIG. 5, SHEET 2) (NOT AVAILABLE WITH -LC, -GP, OR -FL) (NOT AVAILABLE WITH -080 & -100 POS); ***-L: LATCHING OPTION (SEE FIG. 6, SHEET3) (NOT AVAILABLE WITH -LC, -GP, -FL, OR -RT1) (NOT AVAILABLE WITH -080 & -100 POS)
- ROW SPECIFICATION: -D: DOUBLE (USE QSE-20-XX-D-XX); No OF BANKS: * SEE NOTE 12

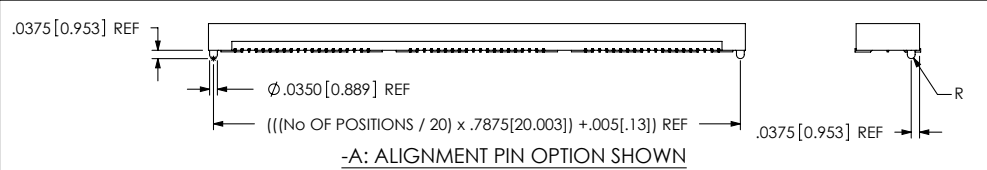
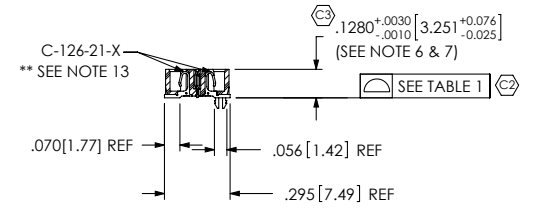
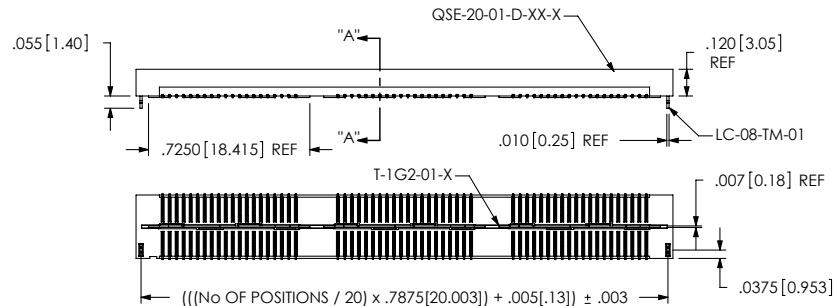


TABLE 1

No OF POS	COPLANARITY INCLUDING GP
-020 THRU -040	.0040 [102]
-060 THRU -100	.0060 [152]

- NOTES:**
1. CONTACT RETENTION: 8 OZ MIN.
 2. GROUND PLANE RETENTION: 8 OZ MIN.
 3. © REPRESENTS A CRITICAL DIMENSION.
 4. PARTS ARE MOLDED TO POSITION.
 5. DELETED.
 6. MAX VARIANCE OF .002[.51].
 7. DIMENSION APPLIES TO CONTACTS & GROUND PLANE.
 8. -L PLATING CAN BE SUBSTITUTED FOR -F PLATING, -G PLATED GROUND PLANE CAN BE SUBSTITUTED FOR -F PLATED GROUND PLANE.
 9. GROUND PLANE PRESS HEIGHT MUST BE .003 [.08] LESS THAN THE MAX HEIGHT OR .001 [.03] GREATER THAN THE MINIMUM HEIGHT OF THE SOCKETS.
 10. S-103 RETENTION: 1 LB MIN IN BODY.
 11. MAY SUB C-126-01-X FOR C-126-21-X.
 12. FOR NEW APPLICATIONS REQUIRING THESE POSITIONS, PLEASE CONTACT SAMTEC INTERCONNECT PROCESSING GROUP.
 13. FOR -080, -100 POSITIONS USE C-269-11-X. DO NOT SUB C-126.
 14. DUE TO THE HIGH AMOUNT OF INSERTION FORCE NEEDED, THE -LC OPTION IS NOT COMPATIBLE WITH AUTO PLACEMENT. SAMTEC RECOMMENDS MANUAL PLACEMENT FOR ALL ASSEMBLIES WITH THE -LC OPTION.

UNLESS OTHERWISE SPECIFIED, DIMENSIONS ARE IN INCHES. TOLERANCES ARE:

DECIMALS ANGLES

.XX: ±.01 [3] 2°

.XXX: ±.005 [13]

.XXXX: ±.0020 [051]

PROPRIETARY NOTE
THIS DOCUMENT CONTAINS INFORMATION CONFIDENTIAL AND PROPRIETARY TO SAMTEC, INC. AND SHALL NOT BE REPRODUCED OR TRANSFERRED TO OTHER DOCUMENTS OR DISCLOSED TO OTHERS OR USED FOR ANY PURPOSE OTHER THAN THAT WHICH IT WAS OBTAINED WITHOUT THE EXPRESSED WRITTEN CONSENT OF SAMTEC, INC.

MATERIAL: DO NOT SCALE DRAWING SHEET SCALE: 2:1
INSULATOR: BLACK LCP
CONTACT: PHOS BRONZE
GROUND PLANE: PHOS BRONZE

samtec
520 PARK EAST BLVD, NEW ALBANY, IN 47150
PHONE: 812-944-6733 FAX: 812-948-5047
e-Mail: info@SAMTEC.com code: 55322

DESCRIPTION: .8mm DOUBLE ROW HS SOCKET ASSEMBLY

DWG. NO. **QSE-XXX-01-X-D-XXX**

BY: ERIC M 05/20/1999 SHEET 1 OF 3

REVISION AQ

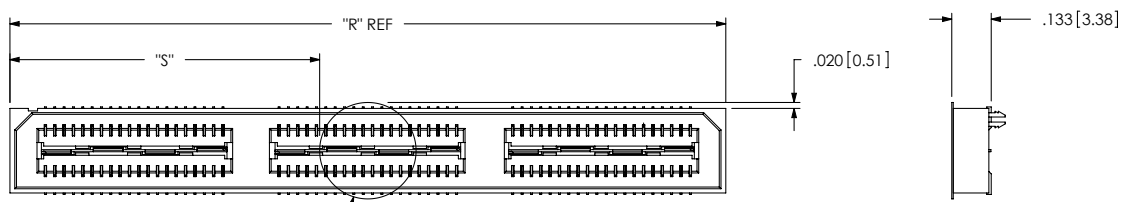


FIG. 2
-K: POLYIMIDE FILM PAD
[K-DOT-.325-.450-.005]

NOTE: "R" = ((No OF POSITIONS / 20) x .7875[20.003]) + .050[1.27]
WITH -GP OPTION: "R" = ((No OF POSITIONS / 20) x .7875[20.003]) + .429[10.90] REF
"S" = (("R" - .325[8.26]) / 2) ± .020[.51]

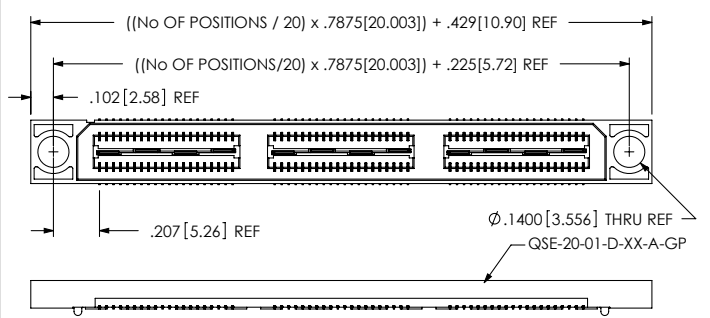


FIG. 3
-GP OPTION
(SAME AS FIG. 1, UNLESS OTHERWISE STATED)
[AVAILABLE ON LEAD STYLE -01 & -01-A ONLY]
(40 POS. MAX WITH T & R PACKAGING)

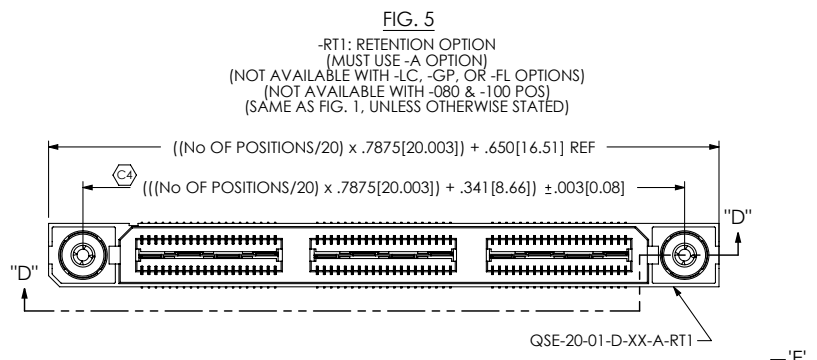
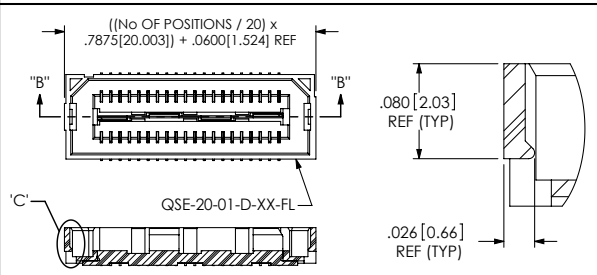
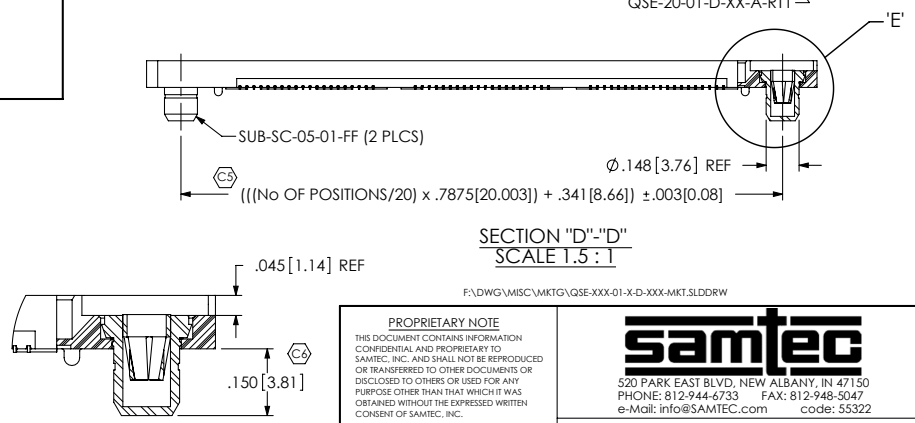


FIG. 5
-RT1: RETENTION OPTION
(MUST USE -A OPTION)
(NOT AVAILABLE WITH -LC, -GP, OR -FL OPTIONS)
(NOT AVAILABLE WITH -080 & -100 POS)
(SAME AS FIG. 1, UNLESS OTHERWISE STATED)



SECTION "B"-"B"
DETAIL 'C'
SCALE 8:1

FIG. 4
-FL: FRICTION LOCKS
(NOT AVAILABLE WITH -GP OPTION)
(SAME AS FIG. 1, UNLESS OTHERWISE STATED)



DETAIL 'E'
SCALE 3:1

SECTION "D"-"D"
SCALE 1.5:1

F:\DWG\MISC\MKTG\QSE-XXX-01-X-D-XXX-MKT.SLDDRW

PROPRIETARY NOTE
THIS DOCUMENT CONTAINS INFORMATION
CONFIDENTIAL AND PROPRIETARY TO
SAMTEC, INC. AND SHALL NOT BE REPRODUCED
OR TRANSFERRED TO OTHER DOCUMENTS OR
DISCLOSED TO OTHERS OR USED FOR ANY
PURPOSE OTHER THAN THAT WHICH IT WAS
OBTAINED WITHOUT THE EXPRESSED WRITTEN
CONSENT OF SAMTEC, INC.

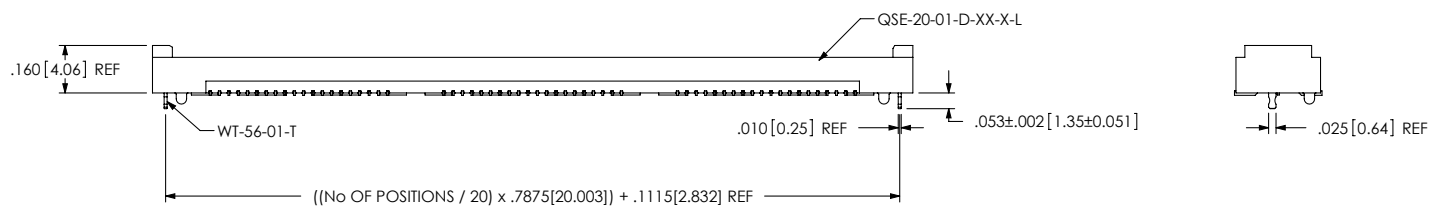
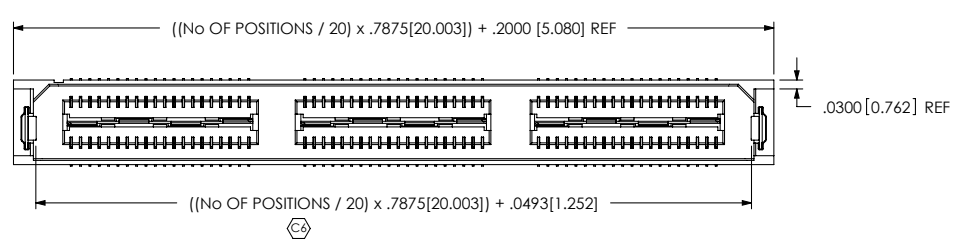


DO NOT SCALE DRAWING
SHEET SCALE: 2:1

DESCRIPTION: .8mm DOUBLE ROW HS SOCKET ASSEMBLY
DWG. NO. QSE-XXX-01-X-D-XXX
BY: ERIC M 05/20/1999 SHEET 2 OF 3

REVISION AQ

FIG. 6
 *** -L: LATCHING OPTION
 (SAME AS FIG. 1, UNLESS OTHERWISE STATED)
 (NOT AVAILABLE WITH -LC, -GP, -FL, OR -RT1)
 (NOT AVAILABLE WITH -080 & -100 POS)
 *** = NOT RELEASED



PROPRIETARY NOTE
 THIS DOCUMENT CONTAINS INFORMATION
 CONFIDENTIAL AND PROPRIETARY TO
 SAMTEC, INC. AND SHALL NOT BE REPRODUCED
 OR TRANSFERRED TO OTHER DOCUMENTS OR
 DISCLOSED TO OTHERS OR USED FOR ANY
 PURPOSE OTHER THAN THAT WHICH IT WAS
 OBTAINED WITHOUT THE EXPRESSED WRITTEN
 CONSENT OF SAMTEC, INC.

DO NOT SCALE DRAWING

SHEET SCALE: 2:1



DESCRIPTION:	.8mm DOUBLE ROW HS SOCKET ASSEMBLY	
DWG. NO.	QSE-XXX-01-X-D-XXX	
BY:	ERIC M	05/20/1999
		SHEET 3 OF 3

F:\DWG\MISC\MKTG\QSE-XXX-01-X-D-XXX-MKT.SLDDRW