

REVISION BW

DO NOT SCALE FROM THIS PRINT

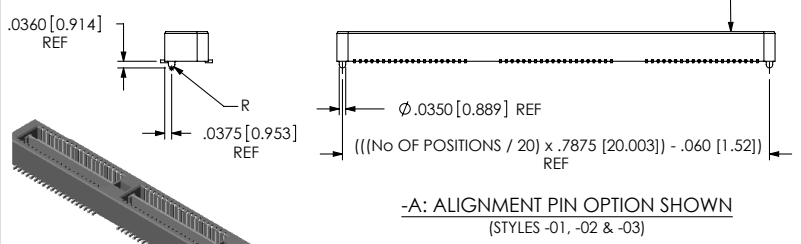
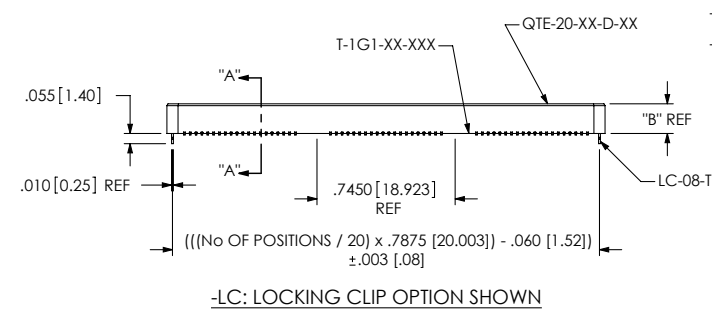
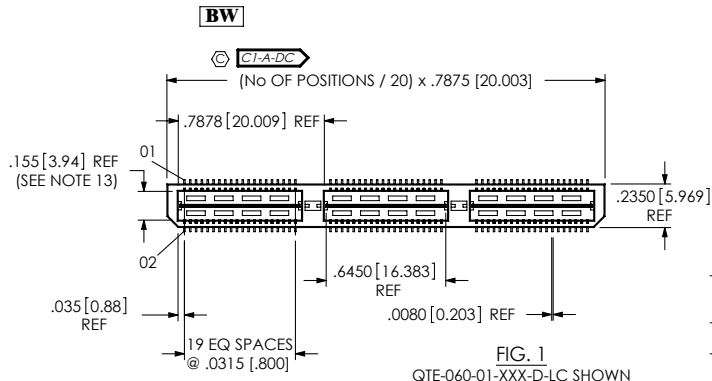


TABLE 1

STYLE	"A"	"B"	BODY	GROUND PLANE	TERMINAL	MATED HEIGHT WITH QSE-01
-01	.1680 [4.267]	.1900 [4.064]	QTE-20-01-D-XX	T-10-1-01-XXX	T-1S30-01-XXX	.107 [6.00] REF
-02	.2861 [7.267]	.2781 [7.064]	QTE-20-02-D-XX	T-10-1-02-XXX	T-1S50-02-XXX	.316 [8.00] REF
-03	.4042 [10.267]	.3962 [10.063]	QTE-20-03-D-XX	T-10-1-03-XXX	T-1S30-03-XXX	.483 [11.00] REF

TABLE 2

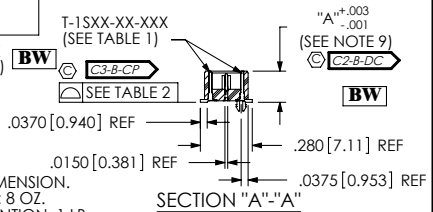
No OF POSITIONS	COPLANARITY INCLUDING GP
-020 THRU -060	.004 [.10]
-080 THRU -100	.006 [.15]

QTE-XXX-XX-XXX-D-XXX

- No OF POSITIONS  
 -020, -040, -060,  
 \*-080, \*-100  
 (PER ROW)  
 \*(SEE NOTE 11)
- LEAD STYLE  
 -01: .1680 [4.267]  
 -02: .2861 [7.267]  
 -03: .4042 [10.267]  
 -04: .6010 [15.265]  
 -05: .7190 [18.263]  
 -06: .8370 [21.260]  
 -07: .9540 [24.231]  
 -08: 1.1510 [29.260]  
 -09: .5220 [13.258]  
 -10: .5606 [14.239]
- PLATING SPECIFICATION  
 -F: FLASH GOLD WITH MATTE TIN TAILS  
 (USE T-1SXX-XX-F, T-1G1-XX-F)  
 (SEE NOTE 07)  
 -L: LIGHT GOLD WITH MATTE TIN TAILS  
 (USE T-1SXX-XX-L, T-1G1-XX-L)  
 -H: HEAVY GOLD WITH FLASH GOLD TAILS  
 (USE T-1SXX-XX-H, T-1G1-XX-G)  
 -C: ELECTRO-POLISHED SELECTIVE  
 (USE T-1SXX-XX-C, T-1G1-XX-L)  
 -STL: SELECTIVE TIN LEAD  
 (USE T-1SXX-XX-STL, T-1G1-XX-STL)  
 -FTL: SELECTIVE TIN LEAD  
 (USE T-1SXX-XX-FTL, T-1G1-XX-FTL)

- OPTION  
 -A: ALIGNMENT PINS  
 -LC: LOCKING CLIPS (SEE NOTE 12)  
 (USE LC-08-TM-01)  
 -K: POLYIMIDE FILM  
 (USE K-DOT-276-.375-.005, SEE FIG. 2)  
 (N/A ON STYLE -07 & -08)  
 -TR: TAPE & REEL (60 POS. MAX)  
 (40 FOR -GP OPTION)  
 (N/A ON STYLE -05, -06, -07, & -08)  
 -GP: GUIDE POSTS (SEE FIG. 3, SHT. 2)  
 (AVAILABLE ON -01 ONLY)  
 (USE QTE-20-01-D-XX-GP)  
 (T & R PACK: 40 POS. MAX.)  
 -SD: SCREW DOWN (SEE FIGURE 4, SHEET 2)  
 (AVAILABLE ON -01 ONLY)  
 (USE QTE-20-01-D-XX-SD)  
 -FL: FRICTION LOCKS (SEE FIG. 8, SHEET 4)  
 (ONLY AVAILABLE ON -01 & -02)  
 (NOT AVAILABLE WITH -GP, -SD)  
 -RT1: RETENTION OPTION (SEE FIG. 9, SHEET 5)  
 (ONLY AVAILABLE ON -01 LEAD STYLE)  
 (MUST USE -A OPTION)  
 (USE QTE-20-01-D-XX-A-RT1 & T-1R36-01-F)  
 (NOT AVAILABLE WITH -LC, -GP, -SD, OR -FL)  
 (NOT AVAILABLE ON -100 POS)  
 -L: LATCHING OPTION (40 POS. MAX.)  
 (SEE FIG. 11, SHEET 6) (MUST USE -A OPTION)  
 (AVAILABLE ON -01 ONLY)  
 (NOT AVAILABLE WITH -LC, -GP, -SD, -FL, OR -RT1)

- ROW SPECIFICATION  
 -D: DOUBLE (USE QTE-20-XX-D-XX & QTEH-20-XX-D-XX)  
 No OF BANKS



- NOTES:
- ⊙ REPRESENTS A CRITICAL DIMENSION.
  - MINIMUM TERMINAL RETENTION: 8 OZ.
  - MINIMUM GROUND PLANE RETENTION: 1 LB.
  - PARTS TO BE MOLDED TO POSITION.
  - MAXIMUM VARIANCE OF .002 [.05].
  - DIMENSION APPLIES TO TERMINALS AND GROUND PLANE.
  - T-1SXX-XX-L CAN BE SUBSTITUTED FOR T-1SXX-XX-F.
  - NOTE DELETED.
  - GROUND PLANE PRESS HEIGHT MUST BE .003 [.08] LESS THAN THE MAX HEIGHT OR .001 [.03] GREATER THAN THE MINIMUM HEIGHT OF THE TERMINALS.
  - T-1R36 RETENTION TO BODY TO BE 1.0 LBF.
  - FOR NEW APPLICATIONS REQUIRING THESE POSITIONS, PLEASE CONTACT SAMTEC INTERCONNECT PROCESSING GROUP.
  - DUE TO THE HIGH AMOUNT OF INSERTION FORCE NEEDED, THE -LC OPTION IS NOT COMPATIBLE WITH AUTO PLACEMENT. SAMTEC RECOMMENDS MANUAL PLACEMENT FOR ALL ASSEMBLIES WITH THE -LC OPTION.
- ⊙13. ROW TO ROW IS .152. PIN CAN EXTEND PAST WALL .003 MAX.

UNLESS OTHERWISE SPECIFIED, DIMENSIONS ARE IN INCHES. TOLERANCES ARE:

DECIMALS	ANGLES
.XX: ±.01 [.3]	2°
.XXX: ±.005 [.13]	
.XXXX: ±.0020 [.051]	

PROPRIETARY NOTE  
 THIS DOCUMENT CONTAINS INFORMATION CONFIDENTIAL AND PROPRIETARY TO SAMTEC, INC. AND SHALL NOT BE REPRODUCED OR TRANSMITTED TO OTHER DOCUMENTS OR DISCLOSED TO OTHERS OR USED FOR ANY PURPOSE OTHER THAN THAT WHICH IT WAS OBTAINED WITHOUT THE EXPRESSED WRITTEN CONSENT OF SAMTEC, INC.

MATERIAL: DO NOT SCALE DRAWING SHEET SCALE: 1:0.8  
 INSULATOR: LCP, COLOR: BLACK  
 TERMINAL: PHOS BRONZE  
 GROUND PLANE: PHOS BRONZE

DESCRIPTION:  
 .8mm DOUBLE ROW HS TERMINAL ASSEMBLY

DWG. NO. QTE-XXX-XX-XXX-D-XXX

BY: DEAN P 09-14-2010 SHEET 1 OF 6

520 PARK EAST BLVD, NEW ALBANY, IN 47150  
 PHONE: 812-944-6733 FAX: 812-948-5047  
 e-Mail info@SAMTEC.com code 55322

REVISION BW

FIG. 2  
-K: POLYIMIDE FILM PAD  
[USE K-DO1-.276-.375-.005]

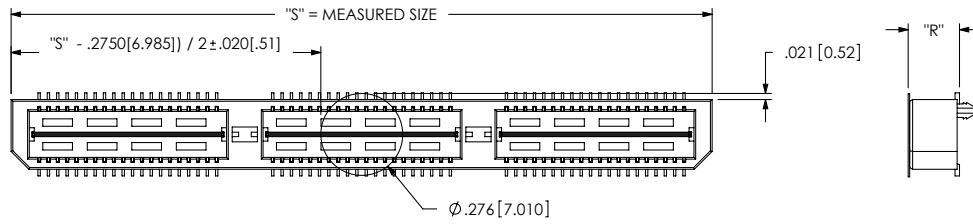


TABLE 3	
STYLE	"R"
-01	.173[4.39]
-02	.291[7.39]
-03	.409[10.39]
-04	.605[15.37]
-05	.721[18.31]
-06	.840[21.33]
-09	.528 [13.41]
-10	.567[14.37]

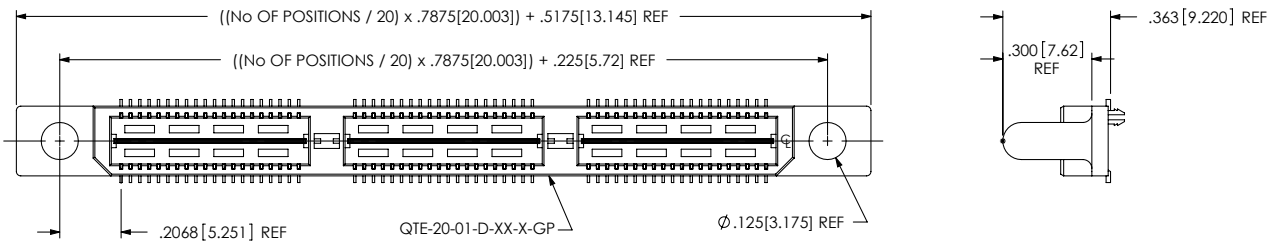


FIG. 3  
-GP: GUIDE POST OPTION  
(-01 LEAD STYLE ONLY)  
(SAME AS FIG. 1, UNLESS OTHERWISE STATED)

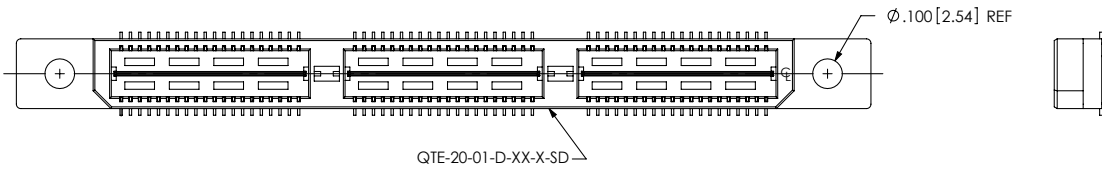


FIG. 4  
-SD: SCREW DOWN OPTION  
(-01 LEAD STYLE ONLY)  
(SAME AS FIG. 3, UNLESS OTHERWISE STATED)

PROPRIETARY NOTE  
THIS DOCUMENT CONTAINS INFORMATION  
CONFIDENTIAL AND PROPRIETARY TO  
SAMTEC, INC. AND SHALL NOT BE REPRODUCED  
OR TRANSFERRED TO OTHER DOCUMENTS OR  
DISCLOSED TO OTHERS OR USED FOR ANY  
PURPOSE OTHER THAN THAT WHICH IT WAS  
OBTAINED WITHOUT THE EXPRESSED WRITTEN  
CONSENT OF SAMTEC, INC.

DO NOT SCALE DRAWING

SHEET SCALE: 2:1

**samtec**

520 PARK EAST BLVD, NEW ALBANY, IN 47150  
PHONE: 812-944-6733 FAX: 812-948-5047  
e-Mail info@SAMTEC.com code 55322

DESCRIPTION: .8mm DOUBLE ROW HS TERMINAL ASSEMBLY

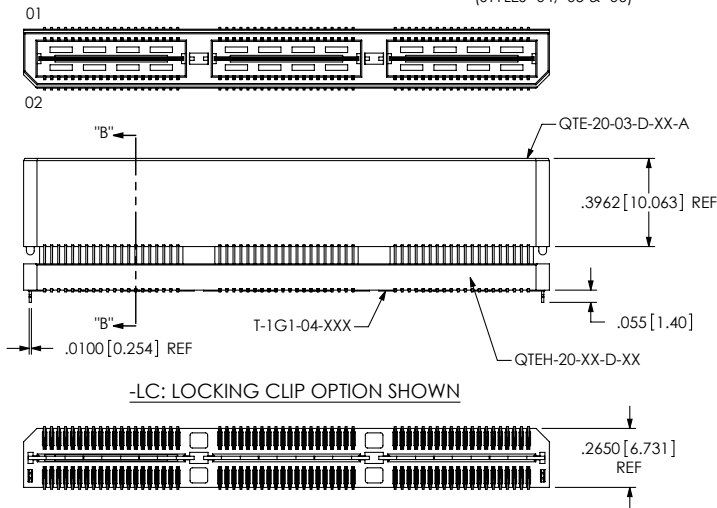
DWG. NO. QTE-XXX-XX-XXX-D-XXX

BY: DEAN P 09-14-2010 SHEET 2 OF 6

F:\DWG\MISC\MKTG\QTE-XXX-XX-X-D-XXX-MKT.SLDDRW

REVISION BW

FIG. 5  
QTE-060-04-X-D-LC SHOWN  
[DIFFERENT AS SHOWN, OTHERWISE SAME AS FIG. 1]  
(STYLES -04, -05 & -06)



-LC: LOCKING CLIP OPTION SHOWN

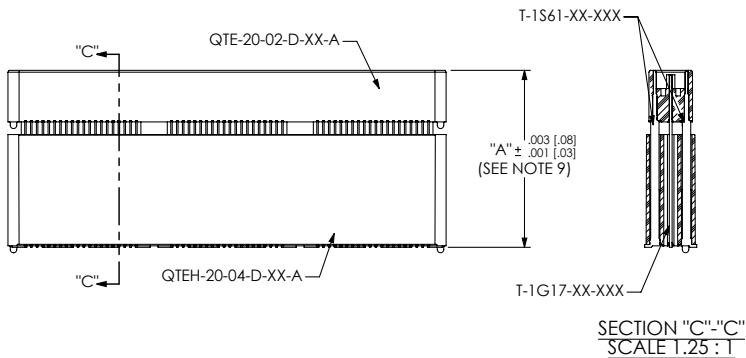
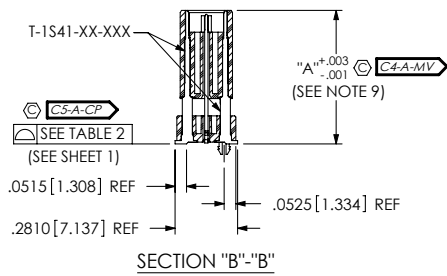


FIG. 6  
QTE-060-07-X-D-A SHOWN  
[DIFFERENT AS SHOWN, OTHERWISE SAME AS FIG. 5]  
(STYLES -07 & -08)

SECTION "C"- "C"  
SCALE T.25 : 1

TABLE 4							MATED HEIGHT WITH QSE-01
STYLE	"A"	GROUND PLANE	TERMINAL	BOTTOM SPACER BODY	TOP BODY		
-04	.6010 [15.265]	T-1G1-04-XXX	T-1S41-04-XXX	QTEH-20-01-D-XX-X	QTE-20-03-D-XX-X		630 [16.00] REF
-05	.7190 [18.263]	T-1G1-05-XXX	T-1S41-05-XXX	QTEH-20-01-D-XX-X	QTE-20-03-D-XX-X		748 [19.00] REF
-06	.8370 [21.260]	T-1G1-06-XXX	T-1S41-06-XXX	QTEH-20-02-D-XX-X	QTE-20-03-D-XX-X		866 [22.00] REF
-07	.9540 [24.232]	T-1G1-07-XXX	T-1S61-21-XXX	QTEH-20-04-D-XX-X	QTE-20-02-D-XX-X		984 [25.00] REF
-08	1.1510 [29.235]	T-1G1-02-XXX	T-1S61-22-XXX	QTEH-20-04-D-XX-X	QTE-20-02-D-XX-X		1.1811 [30.00] REF
-09	.5220 [13.259]	T-1G1-08-XXX	T-1S60-09-XXX	QTEH-20-01-D-XX-X	QTE-20-02-D-XX-X		.551 [14.00] REF
-10	.3606 [9.139]	T-1G1-10-XXX	T-1S60-10-XXX	QTEH-20-01-D-XX-X	QTE-20-02-D-XX-X		.591 [15.00] REF



SECTION "B"- "B"

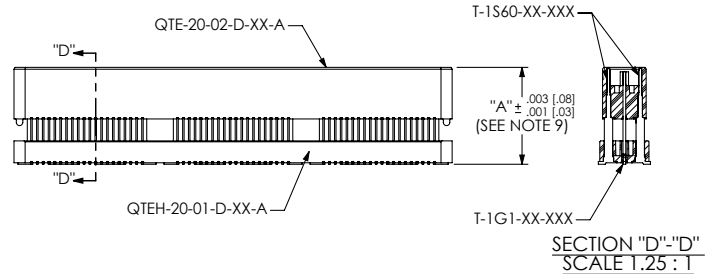


FIG. 7  
QTE-060-09-X-D-A SHOWN  
[DIFFERENT AS SHOWN, OTHERWISE SAME AS FIG. 5]  
(STYLES -09 & -10)

F:\DWG\MISC\MKTG\QTE-XXX-XX-X-D-XXX-MKT.SLDDRW

PROPRIETARY NOTE  
THIS DOCUMENT CONTAINS INFORMATION  
CONFIDENTIAL AND PROPRIETARY TO  
SAMTEC, INC. AND SHALL NOT BE REPRODUCED  
OR TRANSFERRED TO OTHER DOCUMENTS OR  
DISCLOSED TO OTHERS OR USED FOR ANY  
PURPOSE OTHER THAN THAT WHICH IT WAS  
OBTAINED WITHOUT THE EXPRESSED WRITTEN  
CONSENT OF SAMTEC, INC.

DO NOT SCALE DRAWING  
SHEET SCALE: 1:0.666667

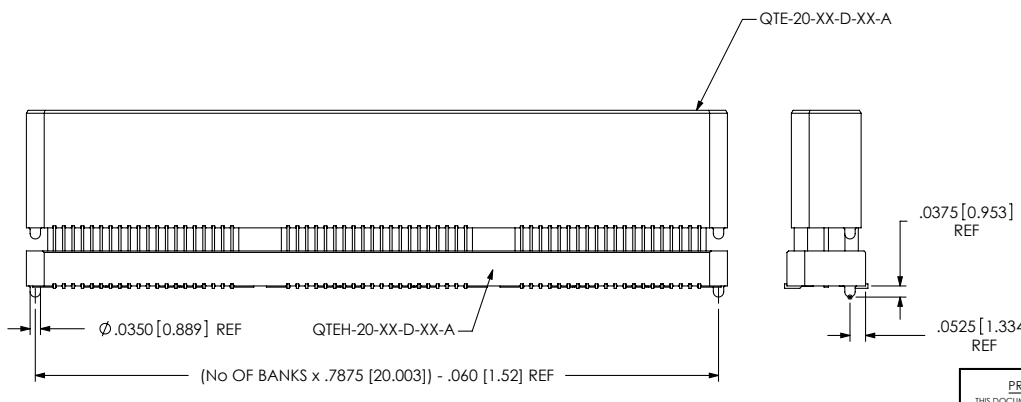
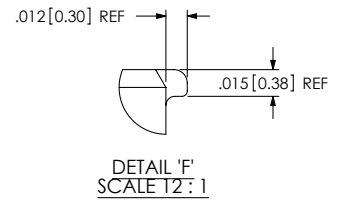
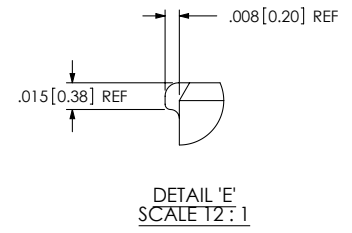
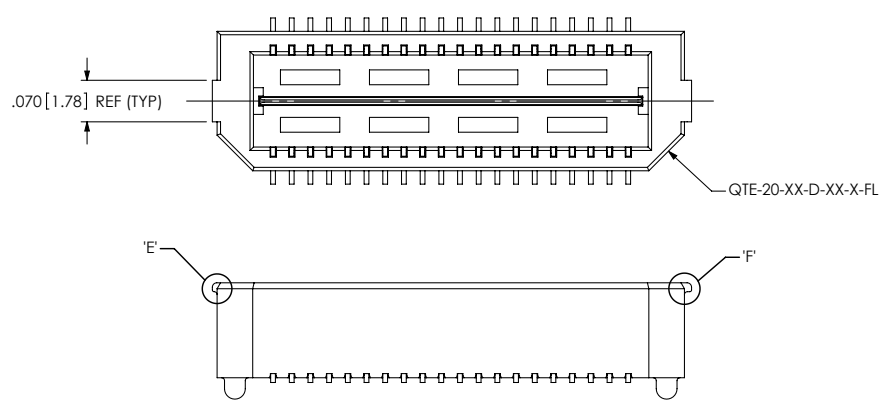
**samtec**

520 PARK EAST BLVD, NEW ALBANY, IN 47150  
PHONE: 812-944-6733 FAX: 812-948-5047  
e-Mail info@SAMTEC.com code 55322

DESCRIPTION: .8mm DOUBLE ROW HS TERMINAL ASSEMBLY  
DWG. NO. QTE-XXX-XX-XXX-D-XXX  
BY: DEAN P 09-14-2010 SHEET 3 OF 6

REVISION BW

FIG. 8  
 -FL: FRICTION LOCKS  
 (ONLY AVAILABLE ON -01 & -02 LEAD STYLES)  
 (NOT AVAILABLE WITH -GP, -SD OPTIONS)  
 (SAME AS FIG. 1, UNLESS OTHERWISE STATED)



-A: ALIGNMENT PIN OPTION  
 (STYLES -04, -05, -06, -07, -08, -09 & -10)

PROPRIETARY NOTE  
 THIS DOCUMENT CONTAINS INFORMATION  
 CONFIDENTIAL AND PROPRIETARY TO  
 SAMTEC, INC. AND SHALL NOT BE REPRODUCED  
 OR TRANSFERRED TO OTHER DOCUMENTS OR  
 DISCLOSED TO OTHERS OR USED FOR ANY  
 PURPOSE OTHER THAN THAT WHICH IT WAS  
 OBTAINED WITHOUT THE EXPRESSED WRITTEN  
 CONSENT OF SAMTEC, INC.

DO NOT SCALE DRAWING

SHEET SCALE: 2:1



DESCRIPTION: .8mm DOUBLE ROW HS TERMINAL ASSEMBLY

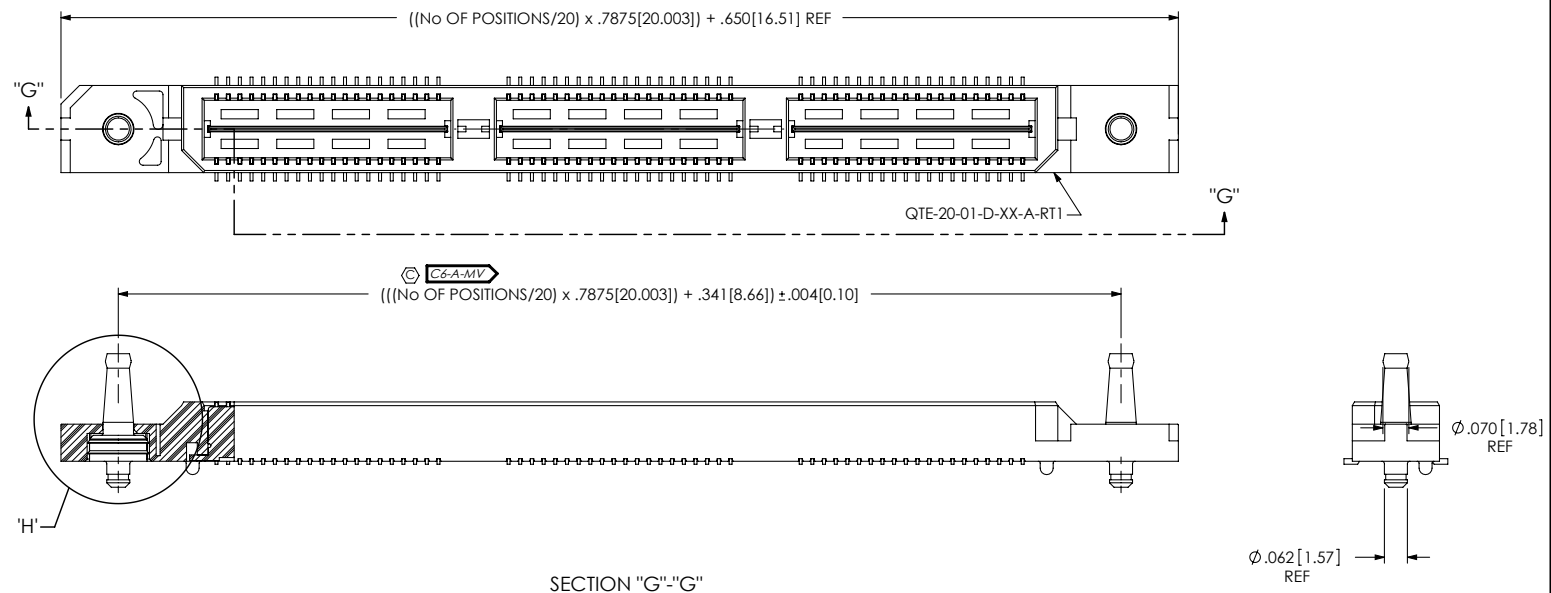
DWG. NO. QTE-XXX-XX-XXX-D-XXX

BY: DEAN P 09-14-2010 SHEET 4 OF 6

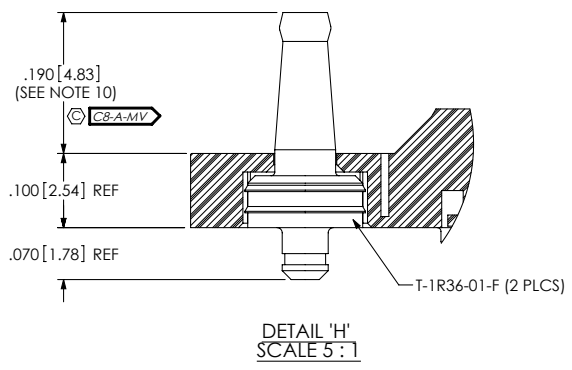
F:\DWG\MISC\MKTG\QTE-XXX-XX-D-XXX-MKT.SLDDRW

REVISION BW

FIG. 9  
 -RT1: RETENTION OPTION  
 (ONLY AVAILABLE ON -01 LEAD STYLE)(MUST USE -A OPTION)  
 (NOT AVAILABLE WITH -LC, -GP, -SD, OR -FL OPTIONS)  
 (NOT AVAILABLE ON -100 POSITION)  
 (SAME AS FIG. 1, UNLESS OTHERWISE STATED)




SECTION "G"- "G"



PROPRIETARY NOTE  
 THIS DOCUMENT CONTAINS INFORMATION  
 CONFIDENTIAL AND PROPRIETARY TO  
 SAMTEC, INC. AND SHALL NOT BE REPRODUCED  
 OR TRANSFERRED TO OTHER DOCUMENTS OR  
 DISCLOSED TO OTHERS OR USED FOR ANY  
 PURPOSE OTHER THAN THAT WHICH IT WAS  
 OBTAINED WITHOUT THE EXPRESSED WRITTEN  
 CONSENT OF SAMTEC, INC.

DO NOT SCALE DRAWING

SHEET SCALE: 1:0.4

 520 PARK EAST BLVD, NEW ALBANY, IN 47150 PHONE: 812-944-6733 FAX: 812-948-5047 e-Mail info@SAMTEC.com code: 55322	
DESCRIPTION: 8mm DOUBLE ROW HS TERMINAL ASSEMBLY	
DWG. NO. QTE-XXX-XX-XXX-D-XXX	
BY: DEAN P	09-14-2010 SHEET 5 OF 6

F:\DWG\MISC\MKTG\QTE-XXX-XX-X-D-XXX-MKT.SLDDRW

REVISION BW

FIG. 10  
-TR: PACKAGING OPTION  
(NOT AVAILABLE ON LEAD SYTTLES -05, -06, -07 & -08)  
(SAME AS FIG. 1, UNLESS OTHERWISE STATED)

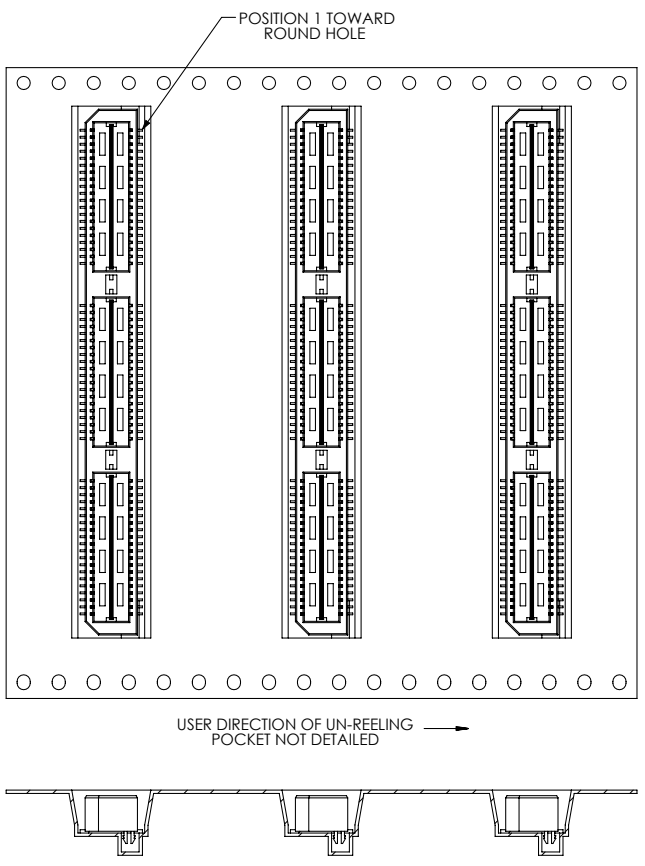
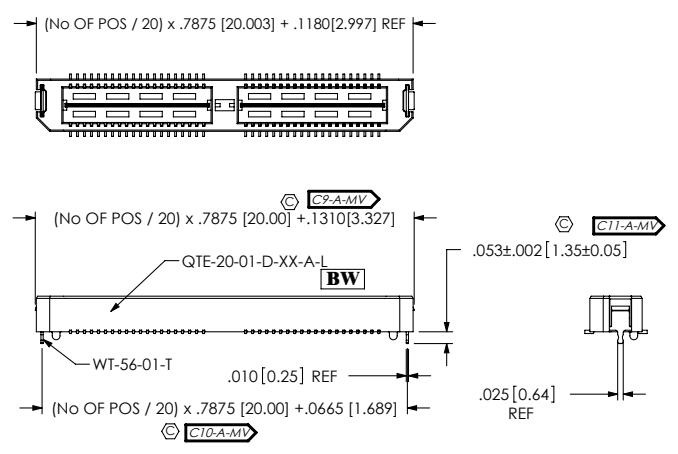


FIG. 11  
-L: LATCHING OPTION  
(40 POS. MAX.)  
(MUST USE -A OPTION)  
(AVAILABLE ON -01 LEAD SYTLE ONLY)  
(NOT AVAILABLE WITH -LC, -GP, -SD, -FL, OR -RT1)  
(SAME AS FIG. 1, UNLESS OTHERWISE STATED)



CRITICAL DIMENSION INSPECTION INSTRUCTION TABLE		
ASSEMBLY OPERATION	START-UP INSPECTION INSPECT CODE A	IN-PROCESS INSPECTION INSPECT CODE B
FILL T-ISXX	C1, C2, C3, C4, C5	
ADD -RT1 OPTION	C6, C8	
ADD -L OPTION	C9, C10, C11	

**PROPRIETARY NOTE**  
THIS DOCUMENT CONTAINS INFORMATION CONFIDENTIAL AND PROPRIETARY TO SAMTEC, INC. AND SHALL NOT BE REPRODUCED OR TRANSFERRED TO OTHER DOCUMENTS OR DISCLOSED TO OTHERS OR USED FOR ANY PURPOSE OTHER THAN THAT WHICH IT WAS OBTAINED WITHOUT THE EXPRESSED WRITTEN CONSENT OF SAMTEC, INC.

DO NOT SCALE DRAWING

SHEET SCALE: 1:0.8

**samtec**  
520 PARK EAST BLVD, NEW ALBANY, IN 47150  
PHONE: 812-944-6733 FAX: 812-948-5047  
e-Mail info@SAMTEC.com code: 55322

DESCRIPTION:  
**.8mm DOUBLE ROW HS TERMINAL ASSEMBLY**

DWG. NO. **QTE-XXX-XX-XXX-D-XXX**

BY: DEAN P 09-14-2010 SHEET 6 OF 6

F:\DWG\MISC\MKTG\QTE-XXX-XX-X-D-XXX-MKT.SLDDRW