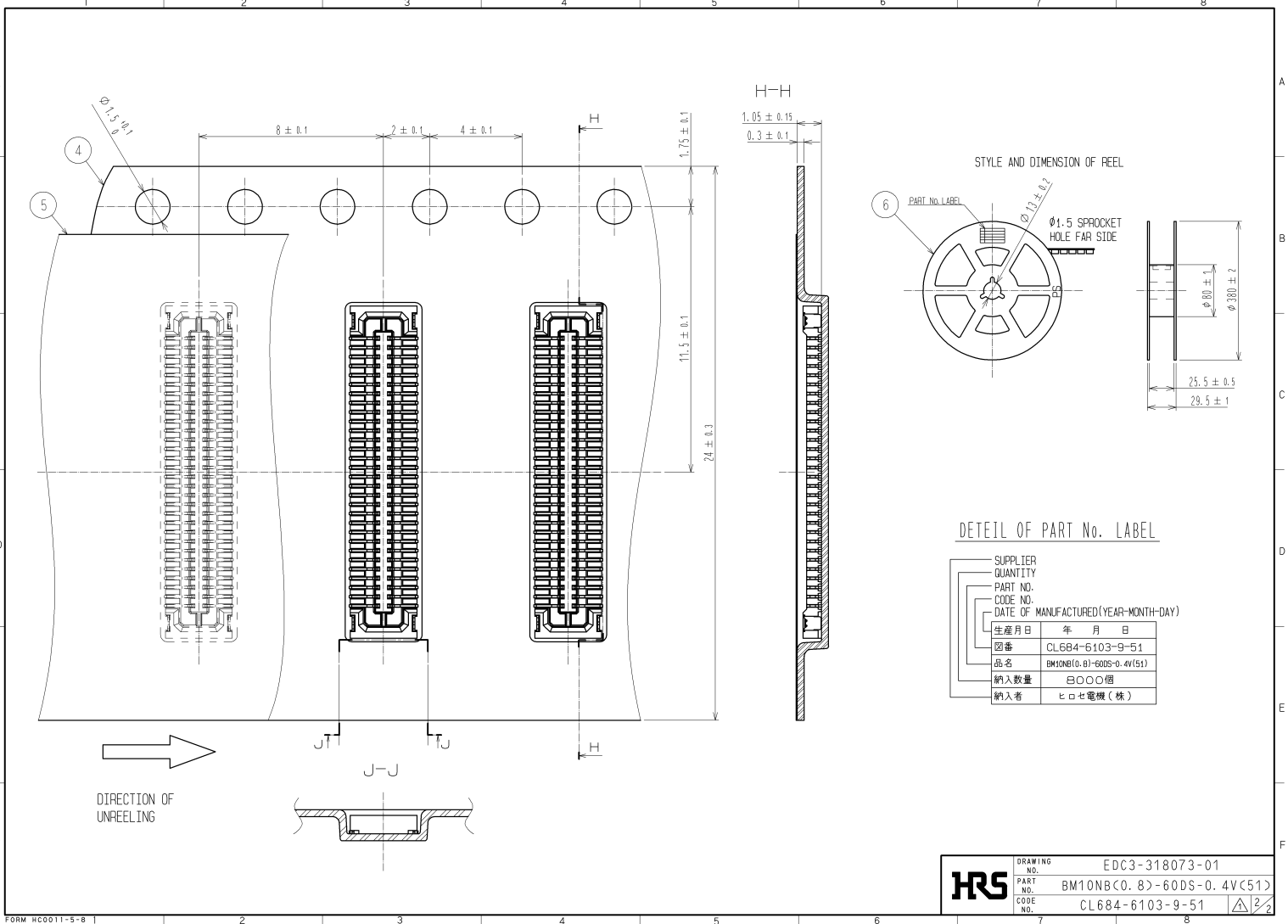


- NOTE 1. ALL LEADS CO-PLANARITY SHALL BE 0.1 MAX.
 2. PER REEL : 8000 CONNECTORS.
 3. AT THE BEGINNING OF THE REEL, 100 mm AT MIN SHALL BE EMPTY POCKETS.
 AT THE END OF THE REEL, 160 mm AT MIN SHALL BE EMPTY.
 4. CONTACT PLATING SPECIFICATIONS.
 CONTACT AREA : GOLD 0.05#m MIN.
 SMT LEAD : GOLD 0.05#m MIN.
 UNDERPLATING : NICKEL 1#m MIN.
 (SURFACE : SEALING)
 5. METAL HOLD DOWN PLATING SPECIFICATIONS.
 MOUNTING AREA: GOLD 0.05#m MIN.
 UNDERPLATING : NICKEL 1#m MIN.
 6. PEEL FORCE OF COVER TAPE REFERS TO JIS C 0805.

3	PHOSPHOR BRONZE	5		6	PS	PLASTIC REEL (BLACK)							
2	PHOSPHOR BRONZE	4		5	POLYESTER	CLEAR(COVER TAPE)							
1	LCP		UL94V-0- BLACK	4	PS	CLEAR(EMBOSSED CARRIER TAPE)							
NO.	MATERIAL	FINISH	REMARKS	NO.	MATERIAL	FINISH	REMARKS						
UNITS	mm	SCALE	FREE	COUNT	0	DESCRIPTION OF REVISIONS	DIS-H-003925	DESIGNED	SH. HOSODA	CHECKED	TS. MIYAZAKI	DATE	09.05.27
HIROSE ELECTRIC CO., LTD.		APPROVED	KH. IKEDA	08.04.22	DRAWING NO.	E0C3-318073-01							
		CHECKED	KY. MIDORIKAWA	08.04.22	PART NO.	BM10NB(0.8)-60DS-0.4V(51)							
		DESIGNED	TH. ARAI	08.04.21	CODE NO.	CL684-6103-9-51							
		DRAWN	SH. HOSODA	08.04.21									



STYLE AND DIMENSION OF REEL

DETAIL OF PART No. LABEL

SUPPLIER	ヒロセ電機
QUANTITY	8000個
PART NO.	BM10NB(0.8)-60DS-0.4V(51)
CODE NO.	CL684-6103-9-51
DATE OF MANUFACTURED (YEAR-MONTH-DAY)	2010-05-15
生産月日	年 月 日
図番	CL684-6103-9-51
品名	BM10NB(0.8)-60DS-0.4V(51)
納入数量	8000個
納入者	ヒロセ電機(株)

HRS DRAWING NO. EDC3-318073-01
 PART NO. BM10NB(0.8)-60DS-0.4V(51)
 CODE NO. CL684-6103-9-51