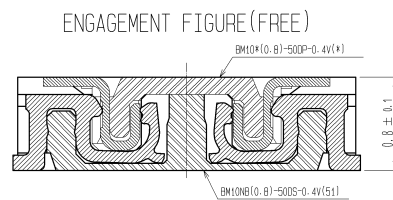
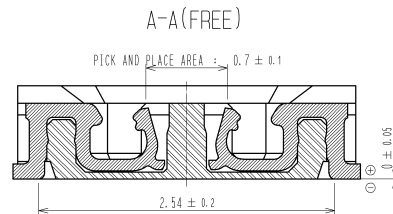
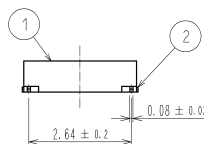
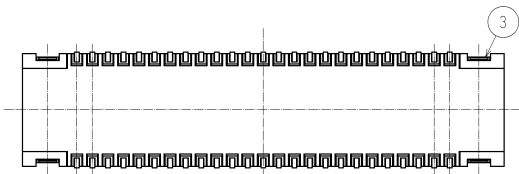
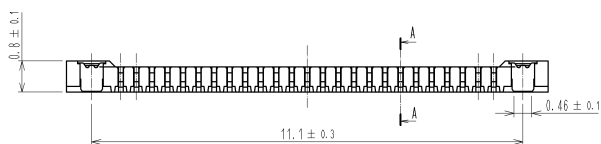
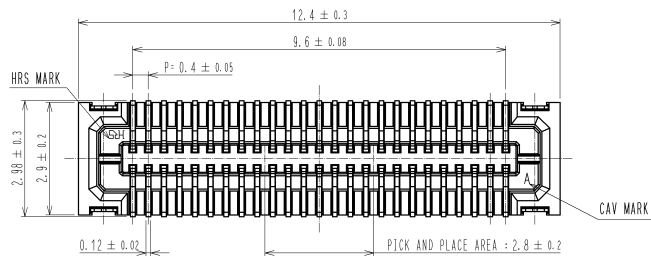
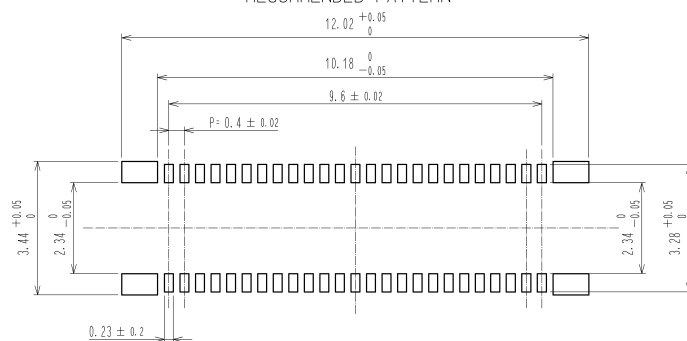


APPLICABLE STANDARD				
RATING	OPERATING TEMPERATURE RANGE	-35°C TO 85°C (NOTES 1)	STORAGE TEMPERATURE RANGE	-10°C TO 60°C
	VOLTAGE	30V AC	APPLICABLE CONNECTOR	BM10*(0.8)-50DP-0.4V (**)
	CURRENT	0.3A		
SPECIFICATIONS				
ITEM	TEST METHOD	REQUIREMENTS	QT	AT
CONSTRUCTION				
GENERAL EXAMINATION	CONFIRMED VISUALLY AND BY MEASURING INSTRUMENT.	ACCORDING TO DRAWING.	X	X
MARKING	CONFIRMED VISUALLY.		X	X
ELECTRIC CHARACTERISTICS				
CONTACT RESISTANCE	20mV AC OR LESS 1kHz, 1mA	100mΩ MAX.	X	-
INSULATION RESISTANCE	100V DC.	50MΩ MIN.	X	-
VOLTAGE PROOF	100V AC FOR 1 min.	NO FLASHOVER OR BREAKDOWN.	X	-
MECHANICAL CHARACTERISTICS				
INSERTION AND WITHDRAWAL FORCES	MEASURED BY APPLICABLE CONNECTOR.	①INSERTION FORCE :50.7 (N)MAX ②WITHDRAWAL FORCE :9.8 (N)MIN	X	-
MECHANICAL OPERATION	10TIMES INSERTIONS AND WITHDRAWALS.	①CONTACT RESISTANCE: 100mΩ MAX. ②NO DAMAGE, CRACK OR LOOSENESS OF PARTS.	X	-
VIBRATION	FREQUENCY 10 TO 55 TO 10 Hz, APPROX 5min, SINGLE AMPLITUDE 0.75 mm, 10CYCLES, FOR 3 DIRECTIONS.	①NO ELECTRICAL DISCONTINUITY OF 1 μs. ②NO DAMAGE, CRACK OR LOOSENESS OF PARTS.	X	-
SHOCK	490 m/s ² DURATION OF PULSE 11 ms AT 3 TIMES FOR 3 DIRECTIONS.	①NO ELECTRICAL DISCONTINUITY OF 1 μs. ②NO DAMAGE, CRACK OR LOOSENESS OF PARTS.	X	-
ENVIRONMENTAL CHARACTERISTICS				
RAPID CHANGE OF TEMPERATURE	TEMPERATURE -55 → 85 °C TIME 30 → 30 min UNDER 5 CYCLES. (RELOCATION TIME TO CHAMBER: WITHIN 2 ~3 MIN)	①CONTACT RESISTANCE: 100mΩ MAX. ②INSULATION RESISTANCE: 50MΩ MIN. ③NO DAMAGE, CRACK OR LOOSENESS OF PARTS.	X	-
DAMP HEAT (STEADY STATE)	EXPOSED AT 40 ± 2 °C, 90 TO 95 %, 96 h.	①CONTACT RESISTANCE: 100mΩ MAX. ②INSULATION RESISTANCE: 25MΩ MIN. ③NO DAMAGE, CRACK OR LOOSENESS OF PARTS.	X	-
SULPHUR DIOXIDE	EXPOSED IN 25 PPM FOR 96h, 25°C, 75%. (REFER TO JIS C 60068)	①CONTACT RESISTANCE: 100mΩ MAX. ②NO DAMAGE, CRACK OR LOOSENESS OF PARTS.	X	-
COUNT	DESCRIPTION OF REVISIONS	DESIGNED	CHECKED	DATE
0				
REMARKS		APPROVED	KH. IKEDA	09.05.27
NOTE1: INCLUDE THE TEMPERATURE RISING BY CURRENT		CHECKED	TS. MIYAZAKI	09.05.26
Unless otherwise specified, refer to JIS C 5402 and IEC 60512		DESIGNED	SH. HOSODA	09.05.25
		DRAWN	SH. HOSODA	09.04.27
Note QT:Qualification Test AT:Assurance Test X:Applicable Test		DRAWING NO.		ELC4-318072-01
HRS	SPECIFICATION SHEET	PART NO.	BM10NB (0.8)-50DS-0.4V (51)	
	HIROSE ELECTRIC CO., LTD.	CODE NO.	CL684-6102-6-51	△ 1/1



RECOMMENDED PATTERN



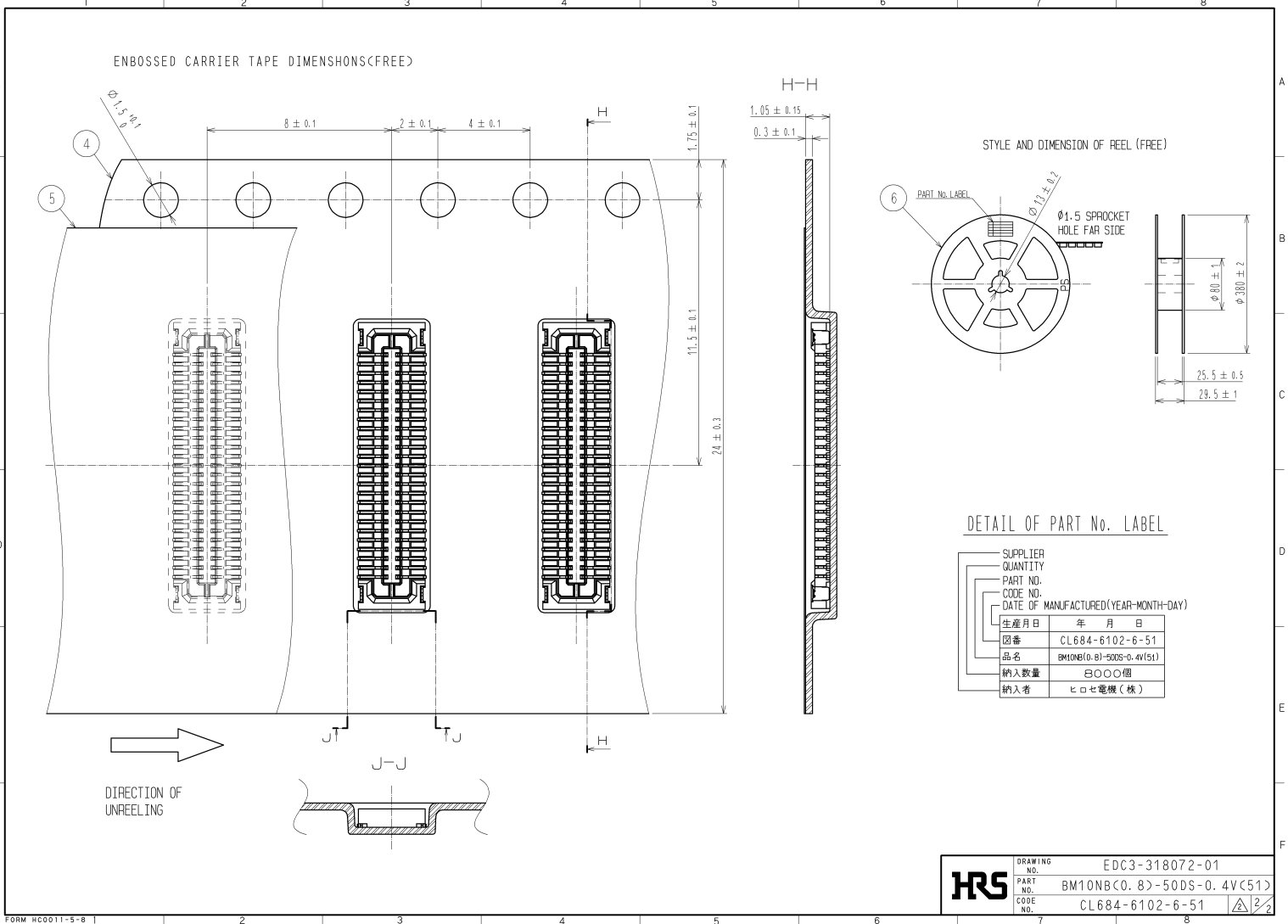
RECOMMENDED SOLDER PASTE: THICKNESS 120µm

- NOTES) 1. ALL LEADS CO-PLANARITY SHALL BE 0.1 mm MAX.
 2. PER REEL : 8,000 CONNECTORS.
 3. AT THE BEGINNING OF THE REEL, 100 mm AT MIN SHALL BE EMPTY POCKETS.
 AT THE END OF THE REEL, 160 mm AT MIN SHALL BE EMPTY.
 4. CONTACT PLATING SPECIFICATIONS.
 CONTACT AREA : GOLD 0.05µm MIN.
 SMT LEAD : GOLD 0.05µm MIN.
 UNDERPLATING : NICKEL 1µm MIN.
 (SURFACE : SEALING)
5. METAL HOLD DOWN PLATING SPECIFICATIONS.
 MOUNTING AREA: GOLD 0.05µm MIN.
 UNDERPLATING : NICKEL 1µm MIN.
 6. PEEL FORCE OF COVER TAPE REFERS TO JIS C 0806.

3	PHOSPHOR BRONZE	5	6	PS	PLASTIC REEL (BLACK)								
2	PHOSPHOR BRONZE	4	5	POLYESTER	CLEAR (COVER TAPE)								
1	LCP	UL94V-0 - BLACK	4	PS	CLEAR (EMBOSSED CARRIER TAPE)								
NO.	MATERIAL	FINISH	REMARKS	NO.	MATERIAL	FINISH	REMARKS						
UNITS	mm	SCALE	1:0 ± 1	COUNT	0	DESCRIPTION OF REVISIONS	DIS-H-003977	DESIGNED	SH. HOSODA	CHECKED	TS. MIYAZAKI	DATE	09.06.18
APPROVED		KH. IKEDA		08.10.24		DRAWING NO.		EDC3-318072-01					
CHECKED		KY. MIDORIKAWA		08.10.24		PART NO.		BM10N(C.8)-50DS-0.4V(51)					
DESIGNED		NY. YAMASHIRO		08.10.24		CODE NO.		CL684-6102-6-51					
DRAWN		SH. HOSODA		08.10.24									



HIROSE ELECTRIC CO., LTD.



HRS DRAWING NO. EDC3-318072-01
 PART NO. BM10NB(C.8)-50DS-0.4V(51)
 CODE NO. CL684-6102-6-51