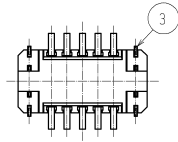
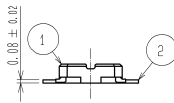
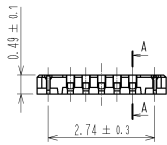
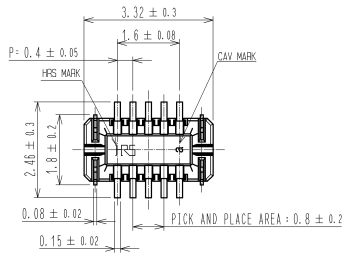
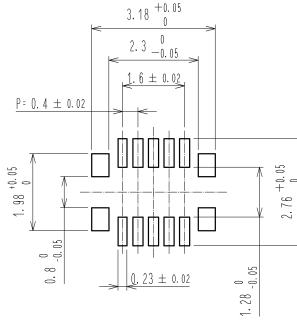


APPLICABLE STANDARD					
RATING	OPERATING TEMPERATURE RANGE	-35°C TO +85°C (NOTES 1)	STORAGE TEMPERATURE RANGE	-10°C TO +60°C	
	VOLTAGE	30V AC	APPLICABLE CONNECTOR	BM10*(0.6)-10DS-0.4V (**)	
	CURRENT	0.3A			
SPECIFICATIONS					
ITEM	TEST METHOD		REQUIREMENTS	QT	AT
CONSTRUCTION					
GENERAL EXAMINATION	CONFIRMED VISUALLY AND BY MEASURING INSTRUMENT.		ACCORDING TO DRAWING.	X	X
MARKING	CONFIRMED VISUALLY.			X	X
ELECTRIC CHARACTERISTICS					
CONTACT RESISTANCE	20mV AC OR LESS 1kHz, 1mA		100mΩ MAX.	X	-
INSULATION RESISTANCE	100V DC.		50MΩ MIN.	X	-
VOLTAGE PROOF	100V AC FOR 1 min.		NO FLASHOVER OR BREAKDOWN.	X	-
MECHANICAL CHARACTERISTICS					
MECHANICAL OPERATION	10TIMES INSERTIONS AND EXTRACTIONS.		① CONTACT RESISTANCE: 100mΩ MAX. ② NO DAMAGE, CRACK OR LOOSENESS OF PARTS.	X	-
VIBRATION	FREQUENCY 10 TO 55 TO 10 Hz, APPROX 5min, SINGLE AMPLITUDE 0.75 mm, 10CYCLES, FOR 3 DIRECTIONS.		① NO ELECTRICAL DISCONTINUITY OF 1 μs. ② NO DAMAGE, CRACK OR LOOSENESS OF PARTS.	X	-
SHOCK	490 m/s <sup>2</sup> DURATION OF PULSE 11 ms AT 3 TIMES FOR 3 DIRECTIONS.		① NO ELECTRICAL DISCONTINUITY OF 1 μs. ② NO DAMAGE, CRACK OR LOOSENESS OF PARTS.	X	-
ENVIRONMENTAL CHARACTERISTICS					
RAPID CHANGE OF TEMPERATURE	TEMPERATURE -55 → +85 °C TIME 30 → 30 min UNDER 5 CYCLES. (RELOCATION TIME TO CHAMBER: WITHIN 2 ~3 MIN)		① CONTACT RESISTANCE: 100mΩ MAX. ② INSULATION RESISTANCE: 50MΩ MIN. ③ NO DAMAGE, CRACK OR LOOSENESS OF PARTS.	X	-
DAMP HEAT (STEADY STATE)	EXPOSED AT 40 ± 2 °C, 90 TO 95 %, 96 h.		① CONTACT RESISTANCE: 100mΩ MAX. ② INSULATION RESISTANCE: 25MΩ MIN. ③ NO DAMAGE, CRACK OR LOOSENESS OF PARTS.	X	-
SULPHUR DIOXIDE	EXPOSED IN 25 PPM FOR 96h, 25°C, 75%. (REFER TO JIS C 60068)		① CONTACT RESISTANCE: 100mΩ MAX. ② NO DAMAGE, CRACK OR LOOSENESS OF PARTS.	X	-
	COUNT	DESCRIPTION OF REVISIONS	DESIGNED	CHECKED	DATE
REMARKS			APPROVED	KH. IKEDA	09.09.14
NOTE1: INCLUDE THE TEMPERATURE RISING BY CURRENT			CHECKED	TS. MIYAZAKI	09.09.14
			DESIGNED	YH. MICHIDA	09.09.14
Unless otherwise specified, refer to JIS C 5402 and IEC 60512			DRAWN	YH. MICHIDA	09.09.14
Note QT:Qualification Test AT:Assurance Test X:Applicable Test			DRAWING NO.		ELC4-318078-51
	SPECIFICATION SHEET		PART NO.	BM10B (0.6)-10DP-0.4V (51)	
	HIROSE ELECTRIC CO., LTD.		CODE NO.	CL684-6304-0-51	1/1

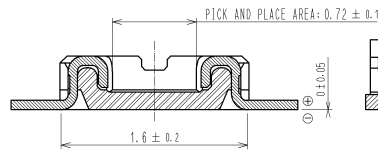


RECOMMENDED PATTERN

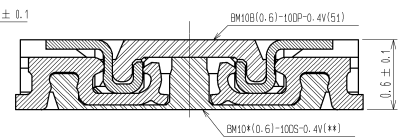


RECOMMENDED SOLDER PASTE: THICKNESS 100µm

A-A

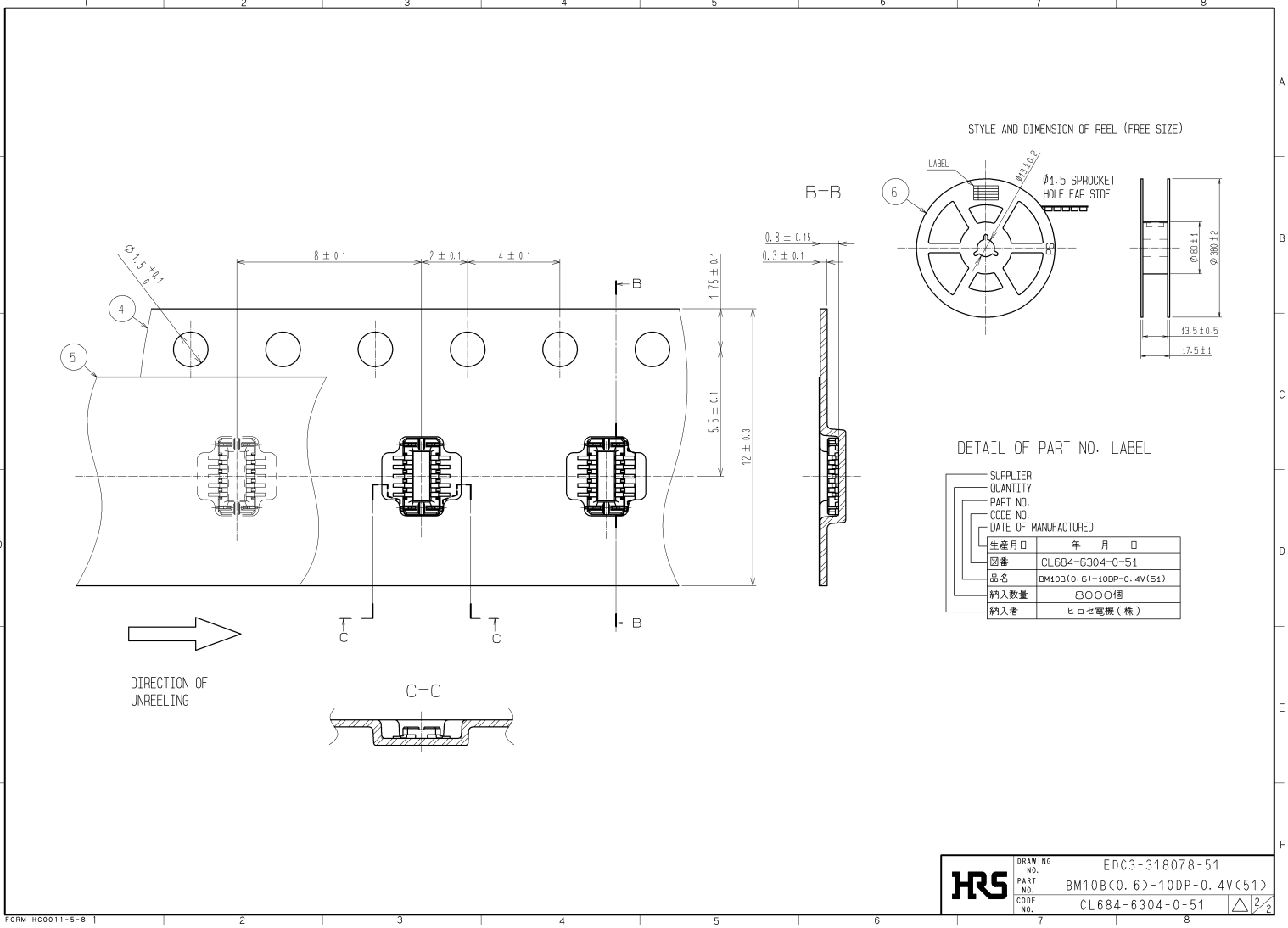


ENGAGEMENT FIGURE



- NOTE
1. ALL LEADS CO-PLANARITY SHALL BE 0.1mm MAX.
  2. PER REEL : BOND CONNECTORS.
  3. AT THE BEGINNING OF THE REEL, 100 mm AT MIN SHALL BE EMPTY POCKETS.  
AT THE END OF THE REEL, 160 mm AT MIN SHALL BE EMPTY.
  4. CONTACT PLATING SPECIFICATIONS.  
CONTACT AREA : GOLD 0.05µm MIN.  
SMT LEAD : GOLD 0.05µm MIN.  
UNDERPLATING : NICKEL 1µm MIN.  
(SURFACE : SEALING)
  5. METAL HOLD DOWN PLATING SPECIFICATIONS.  
MOUNTING AREA : GOLD 0.05µm MIN.  
UNDERPLATING : NICKEL 1µm MIN.
  6. PEEL FORCE REFERS TO JIS C 0805.

3	PHOSPHOR BRONZE	5		6	PS	PLASTIC REEL(BLACK)		
2	PHOSPHOR BRONZE	4		5	POLYESTER	CLEAR(COVER TAPE)		
1	LCP	UL94V-0- BLACK		4	PS	CLEAR(EMBOSSED CARRIER TAPE)		
NO.	MATERIAL	FINISH	REMARKS	NO.	MATERIAL	FINISH	REMARKS	
UNITS	mm	SCALE	10:1	COUNT	DESCRIPTION OF REVISIONS	DESIGNED	CHECKED	DATE
<b>HRS</b> HIROSE ELECTRIC CO., LTD.		APPROVED : KH. IKEDA	09.09.14	DRAWING NO.	EDC3-318078-51			
		CHECKED : TS. MIYAZAKI	09.09.14	PART NO.	BM10B(0.6)-10DP-0.4V(51)			
		DESIGNED : YH. MICHIDA	09.09.14	CODE NO.	CL684-6304-0-51			
		DRAWN : YH. MICHIDA	09.09.14					



**HRS** DRAWING NO. EDC3-318078-51  
 PART NO. BM10B(0.6)-10DP-0.4V(51)  
 CODE NO. CL684-6304-0-51