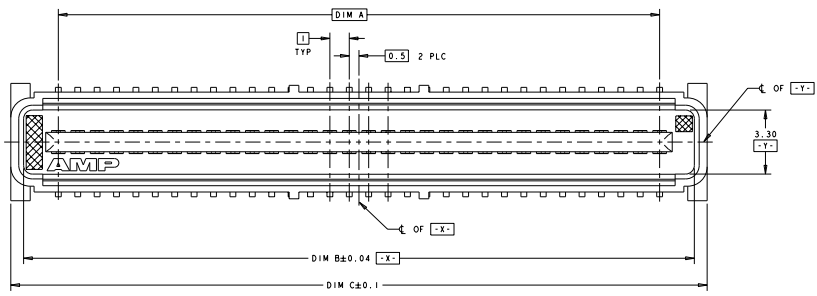
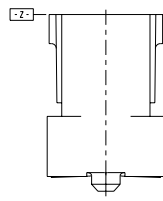
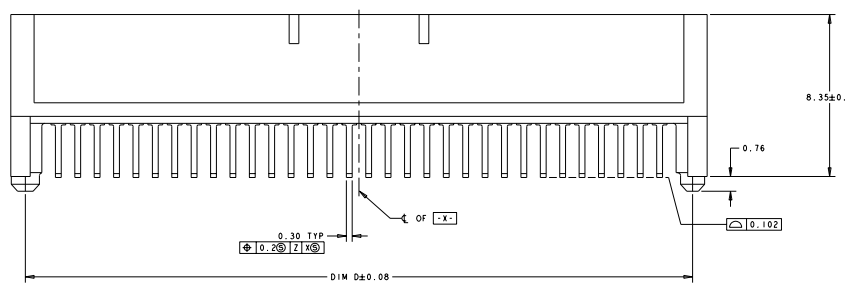


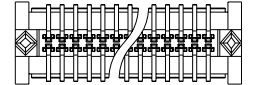
REV	DESCRIPTION	DATE	BY	CHK
D	REVISED PER EC 0512-0417-03	04/28/84	DBS	RWB
E	REVISED PER ECO-98-008615	10/28/88	DM	SB
E1	REV PER ECO-99-015863	10/29/88	ALG	DM



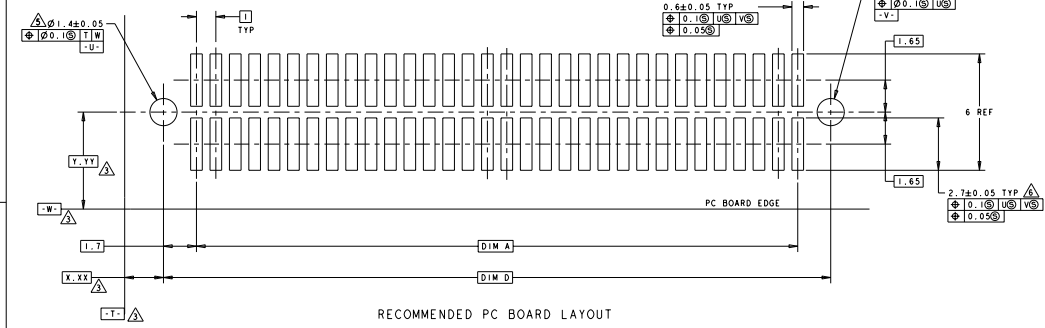
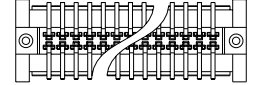
- △ HOUSING MATERIAL: LIQUID CRYSTAL POLYMER. COLOR: BLACK. CONTACT MATERIAL: PHOSPHOR BRONZE.
- △ CONTACT FINISH: NICKEL UNDERPLATE ALL OVER. MATING SURFACES PLATED TO MEET PLY PERFORMANCE REQUIREMENTS OF INDUSTRY SPECIFICATION EIA-700AAAB. SOLDER TAILS PLATED TIN-LEAD.
- △ DATUM LOCATIONS AND BASIC DIMENSIONS TO BE ESTABLISHED BY THE CUSTOMER. CONSULT AMP ENGINEERING WHEN PLACING MULTIPLE CONNECTORS ON A PC BOARD.
- 4. PACKAGED IN TAPE ON REELS PER EIA-841.
- △ 1.5 MIN DIAMETER HOLE SHOULD BE USED IF USING POST STYLE "A" AND PLACING ON PCB WITH VACUUM PLACEMENT EQUIPMENT.
- △ SHORTER SOLDER LANDS MAY BE USED PER EIA 700AAAB, HOWEVER 2.7 LENGTH ASSURES OPTIMUM SOLDER FILLET.
- △ CONTACT FINISH: 0.00381 MINIMUM MATTE TIN-LEAD (93-7) ON SOLDER AREA. 0.00127 MINIMUM GOLD ON MATING AREA. BOTH OVER 0.00127 MINIMUM NICKEL ON ENTIRE CONTACT.
- △ SQUARE AND DIAMOND SHAPED POSTS
- △ ROUND SHAPED POSTS



△ STYLE A POST



△ STYLE B POST



RECOMMENDED PC BOARD LAYOUT

POST STYLE	FINISH	DIM D	DIM C	DIM B	DIM A	STACK HGTS	POS	PART NO
△	△	44.4	45.9	44.58	41	10, 12, 13, 15	84	3-120527-2
△	△	34.4	35.9	34.58	31	10, 12, 13, 15	64	3-120527-1
△	△	44.4	45.9	44.58	41	10, 12, 13, 15	84	2-120527-2
△	△	34.4	35.9	34.58	31	10, 12, 13, 15	64	2-120527-1
△	△	44.4	45.9	44.58	41	10, 12, 13, 15	84	1-120527-2
△	△	34.4	35.9	34.58	31	10, 12, 13, 15	64	1-120527-1
△	△	44.4	45.9	44.58	41	10, 12, 13, 15	84	120527-2
△	△	34.4	35.9	34.58	31	10, 12, 13, 15	64	120527-1

DRAWING NO: 2117797 REV: 1 DATE: 10/28/88 BY: DM CHECKED: SB APPROVED: ALG	TITLE: PLUG ASSY, 1.0mm FH (IEEE 1386) CONNECTOR PART NO: 00779-120527 CUSTOMER DRAWING: YES	DATE: 10/28/88 TIME: 10:11 AM PAGE: 1 OF 1
---	--	--