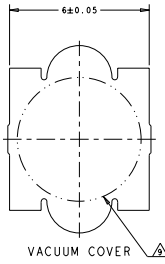
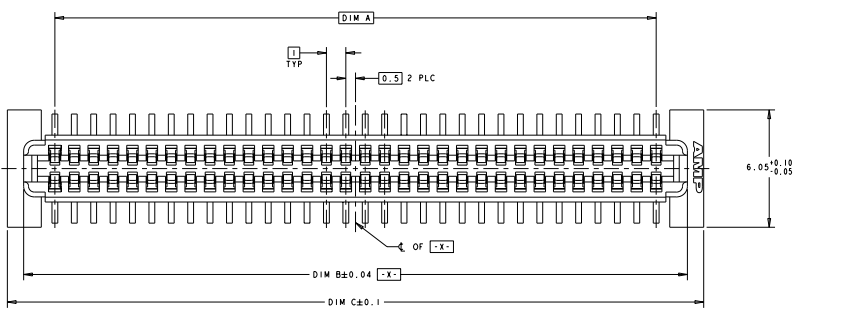
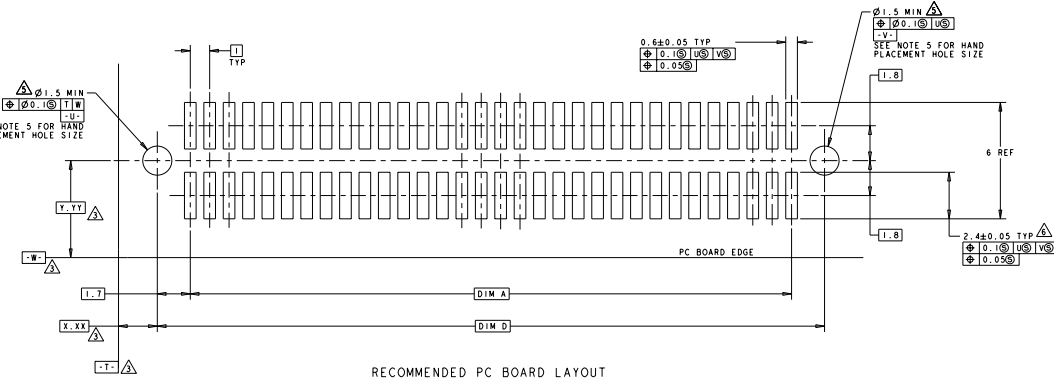
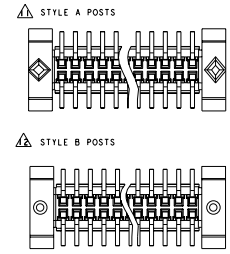
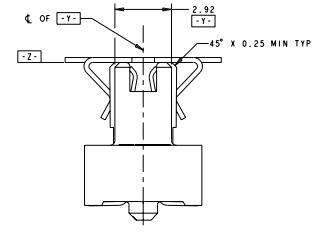
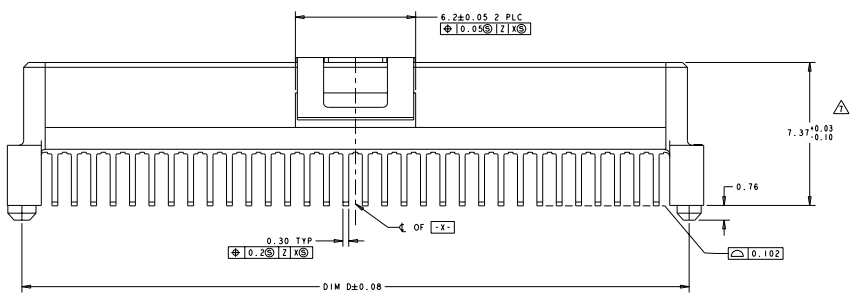


REV	DATE	DESCRIPTION	BY	CHK	APP
0	REV PER EC 0512-0235-04		THOMAS	BC	RB
A	REV PER ECO-98-025515		THOMAS	BC	DB
B	REVISED PER ECO-98-026815		THOMAS	DM	DB
B1	REV PER ECO-99-018297		THOMAS	AJC	DB



- 1 HOUSING MATERIAL: HIGH TEMPERATURE THERMOPLASTIC. COLOR: BLACK. CONTACT MATERIAL: PHOSPHOR BRONZE.
- CONTACT FINISH: NICKEL UNDERPLATE ALL OVER. MATING SURFACES PLATED TO MEET PLI PERFORMANCE REQUIREMENTS OF INDUSTRY SPECIFICATION EIA-700AAB. SOLDER TAILS PLATED TIN.
- DATUM LOCATIONS AND BASIC DIMENSIONS TO BE ESTABLISHED BY THE CUSTOMER. CONSULT AMP ENGINEERING WHEN PLACING MULTIPLE CONNECTORS ON A PC BOARD.
- 4 PACKAGED IN TAPE ON REEL PER EIA-481.
- 1. 4±0.05 DIAMETER HOLE WHEN PLACING BY HAND.
- SHORTER SOLDER LANDS MAY BE USED PER EIA 700AAB, HOWEVER 2.4 LENGTH ASSURES OPTIMUM SOLDER FILLET REGARDLESS OF MANUFACTURER OF CONNECTOR.
- REFERRED TO AS DIM H = 7.3±0.1 IN EIA 700AAB SPECIFICATION.
- VACUUM COVER NOT SHOWN IN SOME VIEWS FOR CLARITY.
- 5.5 MIN DIAMETER TARGET AREA FOR VACUUM PICK-UP.
- CONTACT FINISH: 0.00381 MINIMUM MATTE TIN PER ASTM B 545 ON SOLDER AREA, 0.00127 MINIMUM GOLD PER ASTM B 488 ON MATING AREA, BOTH OVER 0.00127 MINIMUM NICKEL PER SAE-AMS-QQ-N-290 ON ENTIRE CONTACT.
- SQUARE AND DIAMOND SHAPED POSTS
- ROUND SHAPED POSTS



POST STYLE	FINISH	DIM D	DIM C	DIM B	DIM A	STACK HEIGHTS	POS	PART NUMBER
△	△	44.4	45.9	44.22	41	11.12	84	3-5146894-2
△	△	34.4	35.9	34.22	31	11.12	64	3-5146894-1
△	△	44.4	45.9	44.22	41	11.12	84	2-5146894-2
△	△	34.4	35.9	34.22	31	11.12	64	2-5146894-1
△	△	44.4	45.9	44.22	41	11.12	84	1-5146894-2
△	△	34.4	35.9	34.22	31	11.12	64	1-5146894-1
△	△	44.4	45.9	44.22	41	11.12	84	5146894-2
△	△	34.4	35.9	34.22	31	11.12	64	5146894-1

TECH ELECTRONICS CORPORATION
 1000 W. MARKET STREET
 HARRISBURG, PA 17105-3600
 TEL: 717-651-1000 FAX: 717-651-1001
 WWW: WWW.TECH-AMP.COM

RECEPTACLE ASSY. WITH VACUUM COVER.
 1.0mm FHT (IEEE 1389) CONNECTOR

DRAWING NO: 114-25885
 REV: A
 DATE: 00778
 CUSTOMER DRAWING