

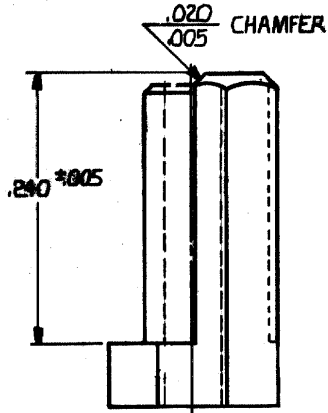
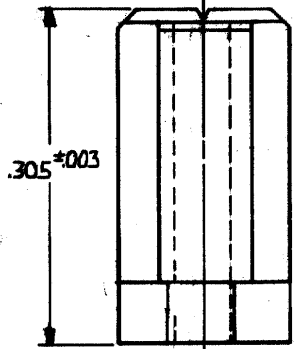
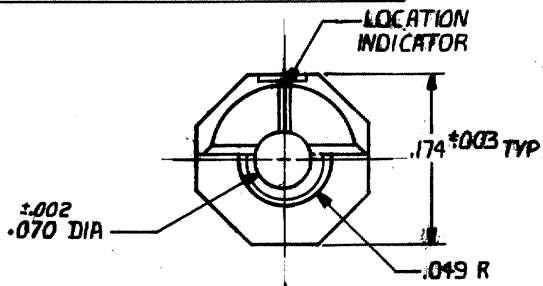
DRAWING MADE IN THIRD ANGLE PROJECTION

© COPYRIGHT 19 BY AMP INCORPORATED, HARRISBURG, PA.
ALL INTERNATIONAL RIGHTS RESERVED, AMP INCORPORATED PRODUCTS
COVERED BY U. S. AND FOREIGN PATENTS AND/OR PATENTS PENDING.

53116-1 AS SHOWN
M55302/31-08

1 LOC AB DIST 39

REVISIONS						
P	F	ZONE	LTR	DESCRIPTION	DATE	APPROVED
				RELEASED WAS 5085-430	RW 2-16-79	
			A	REVISED 5962	rm 3 8-15-79	
			B	REVISED: AB-1237	db 11-85	EAM
			B1	ECN AB-2357	2/2 4-87	EAM



UNLESS OTHERWISE SPECIFIED DIMENSIONS ARE IN INCHES. TOLERANCES ON: DECIMALS ± ANGLES ±		CONTRACT NO	AMP INCORPORATED Harrisburg, Pa.	
MATERIAL GLASS FILLED POLYESTER COLOR BLACK		DR Robert Lister 2-2-79	NAME EXTERNAL KEY FOR BOX CONNECTOR	
FINISH		CHK R. W. Doolittle 2-11-79	SIZE B	CODE IDENT NO 00779
		APPR R. W. Doolittle 2-16-79	DRAWING NO 53116	
		DSGN APPD	SCALE 10:1	SHEET
		OTHER APPD		

AMP 1470-15 (7-73)

CUSTOMER DRAWING